

Product datasheet for **RC206149**

GGN (NM_152657) Human Tagged ORF Clone

Product data:

Product Type:	Expression Plasmids
Product Name:	GGN (NM_152657) Human Tagged ORF Clone
Tag:	Myc-DDK
Symbol:	GGN
Mammalian Cell Selection:	Neomycin
Vector:	pCMV6-Entry (PS100001)
E. coli Selection:	Kanamycin (25 ug/mL)



[View online »](#)

ORF Nucleotide
Sequence:

>RC206149 ORF sequence
Red=Cloning site Blue=ORF Green=Tags(s)

TTTTGTAATACGACTCACTATAGGGCGGCCGGGAATTCGTCGACTGGATCCGGTACCGAGGAGATCTGCC
GCCGCGATCGCC

ATGGGAACTTGCAGTCGGAGCCATCCGCGGGCGGGGCTCCCGAAAAGTGCAGCCCTCGGACCGCGCCC
CCGACTCCCGCCGGACGTCCCTGGTGGAGCCCGAGATGACCTCCAGGCCATGCGCCTGACTCGTGGGCT
GGTGTCTGGTTCCTGGCAGCGCCACACCCCGGGACTCATGGTACCCCGGAGCCCCAGGCTCACCC
TCGACCTGCCCTCACCTAGAACGGCCCTCTCCAGTATGCCCCCTCTGAAGAGGCGGCCGCGGTCT
CTGCACACCCCGGCCCGCGGGGACTCTGCTGCCCGCCGCTCTAAATGGCAAAGCCCGGGGCAC
TCCAGTCCCGGATCCGCCGCTGCTGGAGGCGAGCCATCGCGGCCAGGGCGACCTCCGAGCCTCCG
CCGCTGAAGCCCGCCCGCCCGCCCGGCAACTATCCGTGAAGGACTGTCCGAGGGCCCCATCCCAAT
TCCGCGCCCTGGAGACTTGAAGCCGCCACCACCTTACCTTCTGAACGGCAGCCGGCGGACCGCAG
AATCACTCTGCTCTGGCCACACCCGCTCACCCCGACAGAAAGCCAGGCTGGGCCCGCAACCAGGGC
CAGACGGCCGGCAGGGCTCGCGGAGGGCGCCTCCCATGCGGGCGAAGGCGAAATGGCCAGCCTCGCG
ATTCGAGTCCGGTCTGAGCCTGCTGTGTAAAATCACCTTCAAGTCGAGGCCCTCTTTGGCCCTCCGGC
AGCCTCGAGTTCTTAGCAGCAAAGCTTCGCTGGGGGGCGCGGAGGCGGCGCCCTCTTGTGCTCA
GGTGCCATCTCTACGCCGAGGTCTGAAGCAAGGGCCCTGCCTCTGGAGCCGCTCGCCCTTGGGAG
AGGTTTCTCGAGGGGCACAGGAAGCCGAGGGAGGTGATGGAGACGGCGAAGGGTCTCTGGTCTCCCTC
GGCGCTGCGTCCAAGCCCGGGCCCTACCGCCGACCCCTACACCACCTTCCAGGCTCGAAGCCAAA
TTCGACTGGGTTAGCGCTCCCGACGGCCCTGAACGCCACTTCCGCTTCAACGGGGTGGCGGAGGCATCG
GGCGCCCGGACGGCGTGGCGCCCACTCTCTGGGCCTTGGGGCTCCCTCCGCCACCACAGAGCAGAT
ACACTCAGCTCCCGGGCCCGGAGGCCCGCACCTGCCCTGCTGGCGCCGCTACGTTTCTTCCAGCA
CCCACCAATGGCGAGCCATGCGCCCGGGGCTCCAGGCTGCAGGAGTTACCACCGCTGCCACCGCCA
CACCGCCGCCCACTGCAGCCACCAGCGCTCCAGCCAACGCGCTGCCGGTGGTCCCCGCTCACCCC
GGGTCTGGGCCACAAGGAGTCAGCCCTGGCTCCACCGCAGCCCTGCTCTGCCCCAGCCTTAGCCGCC
GACCAGGCCCGGCCCATCCCCGGCTCCAGCTCCACCGTGGCTGAGCCCTCGCCGCTGTGTCCGCGC
CCGACCCCGGGTGGCGCCATCAAGACCCGCACACGCAGGAACAAGGGTCCCGTGCAGCCGGGGCGC
GACCCGTAAAGATGGCTTGCATGGAGATGGTCTCGGAACGAGCTACAGCTACCGTGCCTGACAGCAGT
GGTGGAGGGGTGGTGGCAGCGGGCCTCTCAGACTGGGGCAGCTAACACCCGCGCTGCGGCCACTGGC
TGCCCTTCCAGGTGCTTAACTCCTGTCCCTGCAAGTGTTACTGCCACCACAGCCAGCCATCGCCGCT
GCCACGCAACGTCTCTGCTGGCTGAGCACATCCACCAACCACCTGGGGAGCCACCCTGGGTTGCCACC
ATCAAGCTGTCCGGCTCTCTGGTGGCAAGCTGGAGCACTACGACTTGCAGGCCACCCATTCCAAC

ACGCGTACGCGGCCGCTCGAGCAGAACTCATCTCAGAAGAGGATCTGGCAGCAAATGATATCCTGGATT
ACAAGGATGACGACGATAAGGTTAA

Protein Sequence: >RC206149 protein sequence
Red=Cloning site Green=Tags(s)

MGNLQSEPSAGGSRKVQPSDRAPDSRRTSLVEPEMTSQAMRLTRGLGVWFPGSATPPGLMVPREPQASP
 STLPLTLERPSVMPPPEEAAAVSAPPPAPAGTLLPGPSKWQKPAGTVPVPRIRRLLEASHRGQGDPPSLR
 PLKPPPPRQLSVKDTVPRAPSQFPPPLETWKPPPLPSEKQPADRRITPALATPASPPTESQAGPRNQG
 QTAGRARGGAPPHAGEGEMADSEGLSLLCKITFKSRPSLAPPAASSSLAAKASLGGGGGGLFAAS
 GAI SYAEVLKQGPLPPGAARPLGEVSRGAQEAEAGGDGDGEGCSGPPSAPASQARALPPPPYTTFFPGSKPK
 FDWVSAPDGPFRHFRFNGAGGGI GAPRRRAAALSGPWGSPPPPEQIHSAPGRRPAPALLAPPTFFIPA
 PTNGEPMRPGPLQELPPLPPTPPPTLQPPALQPTPLPVAPPLTPGLGHKESALAPTAAPALPPALAA
 DQAPAPSPAPAPTVAEPSPPVSAPAPAAAIKTRTRRNKGSRAARGATRKDGLHGDGPRERATATVPDSS
 GGGGGSGASQTGAANTRAARHWLPFQVLNSCPCKCYCHHQPRHRRLPRNVSAWLSTSTNHLGEPWPVAT
 IKLSGSLVAKLEHYDLQATHSN

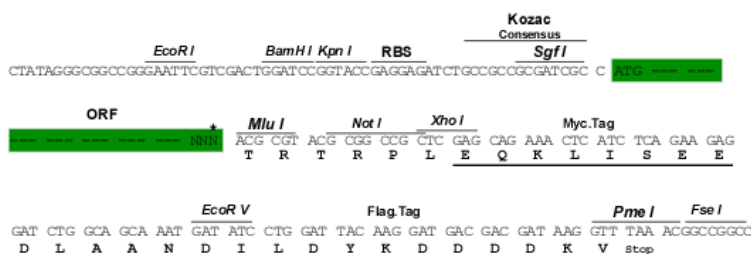
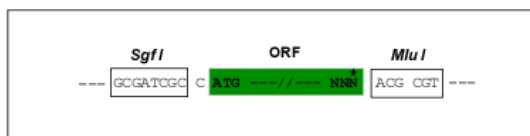
TRTRPLEQKLISEEDLAANDILDYKDDDDKV

Chromatograms: https://cdn.origene.com/chromatograms/mk6805_a05.zip

Restriction Sites: SgfI-MluI

Cloning Scheme:

Cloning sites used for ORF Shuttling:



* The last codon before the Stop codon of the ORF

ACCN: NM_152657

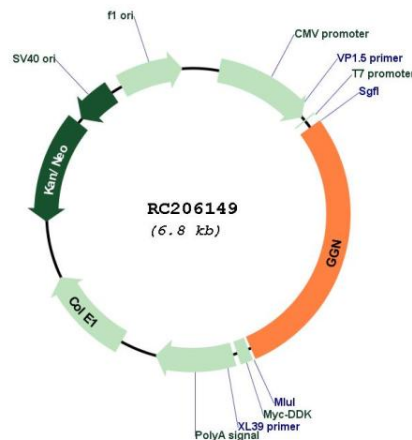
ORF Size: 1956 bp

OTI Disclaimer: The molecular sequence of this clone aligns with the gene accession number as a point of reference only. However, individual transcript sequences of the same gene can differ through naturally occurring variations (e.g. polymorphisms), each with its own valid existence. This clone is substantially in agreement with the reference, but a complete review of all prevailing variants is recommended prior to use. [More info](#)

OTI Annotation: This clone was engineered to express the complete ORF with an expression tag. Expression varies depending on the nature of the gene.

Components:	The ORF clone is ion-exchange column purified and shipped in a 2D barcoded Matrix tube containing 10ug of transfection-ready, dried plasmid DNA (reconstitute with 100 ul of water).
Reconstitution Method:	<ol style="list-style-type: none"> 1. Centrifuge at 5,000xg for 5min. 2. Carefully open the tube and add 100ul of sterile water to dissolve the DNA. 3. Close the tube and incubate for 10 minutes at room temperature. 4. Briefly vortex the tube and then do a quick spin (less than 5000xg) to concentrate the liquid at the bottom. 5. Store the suspended plasmid at -20°C. The DNA is stable for at least one year from date of shipping when stored at -20°C.
Note:	Plasmids are not sterile. For experiments where strict sterility is required, filtration with 0.22um filter is required.
RefSeq:	<u>NM_152657.4</u>
RefSeq Size:	2168 bp
RefSeq ORF:	1959 bp
Locus ID:	199720
UniProt ID:	<u>Q86UU5</u>
Cytogenetics:	19q13.2
MW:	66.7 kDa
Gene Summary:	This gene is a germ cell-specific gene that encodes proteins that interact with POG (proliferation of germ cells). Alternatively spliced transcript variants of a similar mouse gene encode at least three different proteins, namely gametogenetin protein 1a, gametogenetin protein 2, and gametogenetin protein 3, which show a perinuclear, cytoplasmic, and nucleolar localization, respectively. These proteins regulate the localization of POG and may play a role in spermatogenesis. [provided by RefSeq, Jul 2008]

Product images:



Circular map for RC206149