

Product datasheet for **RC206147**

FAM71A (NM_153606) Human Tagged ORF Clone

Product data:

Product Type:	Expression Plasmids
Product Name:	FAM71A (NM_153606) Human Tagged ORF Clone
Tag:	Myc-DDK
Symbol:	FAM71A
Synonyms:	GARI-L4
Mammalian Cell Selection:	Neomycin
Vector:	pCMV6-Entry (PS100001)
E. coli Selection:	Kanamycin (25 ug/mL)



[View online »](#)

ORF Nucleotide Sequence:

>RC206147 ORF sequence
 Red=Cloning site Blue=ORF Green=Tags(s)

TTTTGTAATACGACTCACTATAGGGCGGCCGGGAATTCGTCGACTGGATCCGGTACCGAGGAGATCTGCC
 GCC**CGGATCGCC**

ATGAATGCTGATTTTCTGCTGCCGTATTATACGGCCAGAGTGGCTCCAGCATGAGCATGTTTCGACACCA
 CCATGGGGAAACTGCAGCGACAACGTGTACAAGGGGGAGTACGATATATCAAGTATGCACCGATATTTGA
 GAGCGACTTTATCCAGATCACAAAAGGGGAGAAGTGATTGATGTGCACAACCGTGTCCGTATGGTGACC
 ATGGGCATTGCACGTACCAGCCCATCCTCCCCTCCAGATGTCATGCTACTGGCACGACCGGCCACCG
 GCTGCGAAGAGTATGCTGGACATGGCCAGGCCACCAAGAGAAAAAACGCAAGGCAGCAAAGAACTTAGA
 GCTCACCAGGCTTCTGCCCTGAGGTTTGTACGGATCTCTGTTCAAGACCATGAGAAACAACAGCTGCGC
 CTGAAGTTCGCCACTGGCAGATCTTGTATCTGCAATTGTGCCGCTCTTGACACACGGGATGACCTCT
 TTGCTATTGGGAAAACTAATTTACCTCTTGCGGCCACCATGGAGAGTAAACAGCAGTACCTGTGGCAT
 TCCAGCTGAAGACATGATGTGGATGCCTGTGTTTCAGGAAGACAGGAGGACCTGGGAGCCGTGAACCTT
 CAAGGAAAAGGGGATCAGGACCAGGTGAGCATCCAAGCCTCCACATGGTCTCTGAGGTGTGTGGGGCCA
 CCTCTGCTGCTTATGCTGGAGGGGAGGGACTCCAAAATGACTTTAACAAACCCACTAATGTGCTCAATGC
 ATCCATCCCCAAAACATCTACAGAACTTGTGAGGAGCCAGCAACAGGGGGGATTAAGAGGCAGCAGCA
 GCAGGGGCAGCTGCAGGGGCAGCAACAGGCACCGTAGCAGGTGCCTTGAGTGTGGCAGCAGCCAATTCTG
 CCCCTGGACAGGTGAGCGCAGCCATAGCTGGGGCGGCCACCATCGATGCAGGAGGAAACAAGGCAACAT
 GGCCCTTGACGCACTGCCAGCATGGCTCCAAACAGCAGCAAGGTGGCTGTGGCAGGGGCTGCAGGCAAG
 TCCTCAGAGCATGTTCCAGCGCATCCATGAGCCTTCCCGAGAGGGCAGTGTGAGCCTGGCATTGCAG
 GAGTAGTACTGACCAGCAGGACAGCTGCAGAAGCAGACATGGATGCAGCAGCGGGACCTCCCGTCTCCAC
 CCGGCAGAGCAAGAGCAGCCTGAGTGGACAGCATGGAAGGGAGCGAACCCAGGCCAGCGCTGAAGGCTGC
 AAGGAGGGGAGGAAAGAAGGAAAAGGACAGGGCTCTCGGAAGGAGTCCCATCGCCGACAGGACAGGTG
 AAAGCCGCCACAAAAAAGGGGAGACAAGATTGCCAAAAGTCCCTCCAGCAGGTCCCTCATTAGCCACAG
 AGCCAATAGAGATGACAAAAAGGAGAAAGGCTGTGGCAACCCGGGGAGCAGCAGGCACAGGGACTCGCAT
 AAAGGTGTGAGCCACACGCCATCTCAAAGGAGTCCAGGACCTCTCACAATCTGGGAGGAGCTTATGGA
 CCACAGTTCGGTTCAGCAAGGGACTTGGCAGGGTCACTCTTCTGAGGAACGTGAGGCCAACCT
 TACTACAAAAGTAGTGGGCACACCACATGGCAGAGATGTGGACGTCATGGCTAAGATGGCGGAGAGGAGC
 ACCAACGTGGCCATCGCCGAGACAGCAGAGGGTGGCCAGGGGCTGGAGATGGTTGTTCTATGACACCGG
 ACATCATGGAGACAGTGACCTTTGAAGCCAT

ACGCGTACGCGGCCGCTCGAGCAGAACTCATCTCAGAAGAGGATCTGGCAGCAAATGATATCCTGGATT
 ACAAGGATGACGACGATAAGGTTTAA

Protein Sequence:

>RC206147 protein sequence
 Red=Cloning site Green=Tags(s)

MNADFLPYTAQSGSSMSMFDTTMGKLQRQLYKGEYDIFKYAPIFESDFIQITKRGEVIDVHNRVMT
 MGIARTSPILPLPDVMLLARPATGCEEYAGHGQATKRKKRKAANKLELTRLLPLRFVRSVQDHEKQQLR
 LKFATGRSCYLQLCPALDTRDDLFAWWEKLIYLLRPPMESNSSTCGIPAEDMMWMPVFQEDRRSLGAVNL
 QKGDQDQVSIQSLHMVSEVCGATSAAYAGGELQNDFNKPTNVLNASIPKSTELAEPEATGGIKEAAA
 AGAAAGAAATGTVAGALSVAAANSAPGQVSAIAGAATIDAGGNKGNMALAGTASMAPNSTKVAVAGAAGK
 SSEHVSSASMSLSREGSVSLAIAGVVLTSRTAAEADMDAAAGPPVSTRQSKSSLGQHGRRERTQASAEGC
 KEGRERREKDRALGRSSHRRRTGESRHKTRGDKIAQKSSSRSSFSHRANRDDKKEKGCNGPSSRHRDSH
 KGVSHPTISKESRTSHKSGRSLWTTSSGSSKGLGRVSSFLRNVRANLTKVVGTPHGRDVIDVMAKMAERS
 TNVAIAETAEGGQGLEMVGSMTDIMETVTFEAH

TRTRPLEQKLISEEDLAANDILDYKDDDDKV

Chromatograms:

https://cdn.origene.com/chromatograms/mk6319_g10.zip

Restriction Sites: SgfI-MluI

Cloning Scheme:



ACCN: NM_153606

ORF Size: 1782 bp

OTI Disclaimer: The molecular sequence of this clone aligns with the gene accession number as a point of reference only. However, individual transcript sequences of the same gene can differ through naturally occurring variations (e.g. polymorphisms), each with its own valid existence. This clone is substantially in agreement with the reference, but a complete review of all prevailing variants is recommended prior to use. [More info](#)

OTI Annotation: This clone was engineered to express the complete ORF with an expression tag. Expression varies depending on the nature of the gene.

Components: The ORF clone is ion-exchange column purified and shipped in a 2D barcoded Matrix tube containing 10ug of transfection-ready, dried plasmid DNA (reconstitute with 100 ul of water).

- Reconstitution Method:**
1. Centrifuge at 5,000xg for 5min.
 2. Carefully open the tube and add 100ul of sterile water to dissolve the DNA.
 3. Close the tube and incubate for 10 minutes at room temperature.
 4. Briefly vortex the tube and then do a quick spin (less than 5000xg) to concentrate the liquid at the bottom.
 5. Store the suspended plasmid at -20°C. The DNA is stable for at least one year from date of shipping when stored at -20°C.

Note: Plasmids are not sterile. For experiments where strict sterility is required, filtration with 0.22um filter is required.

RefSeq: [NM_153606.2](#)

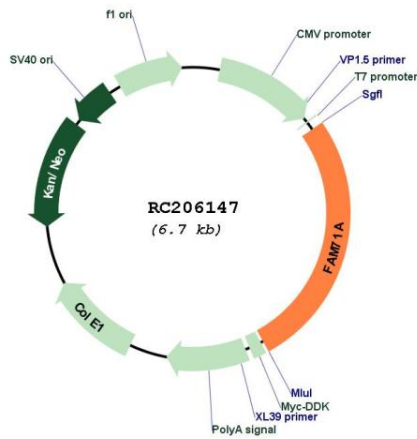
RefSeq Size: 2332 bp

RefSeq ORF: 1785 bp

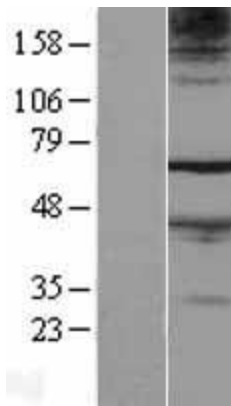
Locus ID: 149647
 UniProt ID: [Q8IYT1](#)
 Cytogenetics: 1q32.3
 MW: 63.3 kDa

Gene Summary: This gene encodes a protein that interacts with the Rab2B small GTPase and may be important for integrity of the Golgi body. A knockdown of this gene induces fragmentation of the Golgi, similar to the effect seen with a knockdown of the Rab2B small GTPase. The encoded protein has an N-terminal Rab-binding domain specific for Rab2B. [provided by RefSeq, Feb 2017]

Product images:



Circular map for RC206147



Western blot validation of overexpression lysate (Cat# [LY407021]) using anti-DDK antibody (Cat# [TA50011-100]). Left: Cell lysates from untransfected HEK293T cells; Right: Cell lysates from HEK293T cells transfected with RC206147 using transfection reagent MegaTran 2.0 (Cat# [TT210002]).