

Product datasheet for **RC206143**

C2CD6 (NM_152525) Human Tagged ORF Clone

Product data:

Product Type:	Expression Plasmids
Product Name:	C2CD6 (NM_152525) Human Tagged ORF Clone
Tag:	Myc-DDK
Symbol:	C2CD6
Synonyms:	ALS2CR11
Mammalian Cell Selection:	Neomycin
Vector:	pCMV6-Entry (PS100001)
E. coli Selection:	Kanamycin (25 ug/mL)



[View online »](#)

ORF Nucleotide
Sequence:

>RC206143 ORF sequence
Red=Cloning site Blue=ORF Green=Tags(s)

TTTTGTAATACGACTCACTATAGGGCGGCCGGGAATTCGTCGACTGGATCCGGTACCGAGGAGATCTGCC
GCCGCGATCGCC

ATGGAGCCACCCCAAGAGACAAATAGGCCCTTTCAGCACACTTGATAACCCGACGGGCAGGTCCAAGTCC
TGTCGCCACCCCGCTATTGCAGAGGAATCCCTACAGCAGCCGGATATCATGCACATTAAGGGTCGGA
GGCTTCTCGGTCCCTTACGCCCTGAACACAGGGCACGACGGCCCTGCCTAAGAACAAGAACCAGGAGGGC
ACCGGGCACCGGCTGCTGAACATGCTGAGAAAACTCTTAAAGAGTCTGATAGTGAAGAAGTGGAAATAA
CACAGGAGACACCAAAATTTGGTGCCATTTGGGGATGTGGTTGGCTGCCTGGGCATTCATATAAAGAAGT
CAGACATTTTATGCCTAAGATCAGTTTACAACATTATGCTAATTTATTCATTCGCATCTCTATAACAAA
GCTGTGAAATGTACAAAATGTGTAGTTGCTATCCAAAAACGATGAGAAGAAGTGTAAATTAAGTTCCG
ATGAAGTGAAGTATTTTCTGTACAGTTCCAGACGTTATGATGATAAGCGGAATAATATTTTATTGGA
ACTCATACAATATGACAATAGAGAAAAAGTGTCTTTCTGTTAGGGAGTGTTCAGATACATCTTTATGAG
GTAATTCAGAAAAGGGTGTTCATTGAAGAGGTCCAAGTGTTCATGGAAACATATTTGTCTCGAGGCTGG
AGGTGGAATTTATGTTCTCCTATGGAACTTTGGTTATGGATTTTCACATCAGTTAAAACCTCTTCAGAA
AATTACTGAGCCATCCATGTTTATGAATCTTGACCACCTCCAGAAAAGACAGATCCCGTGACAAAAGTT
ATTACACCACAGACAGTAGAATATCCAGCATTCTTATCCCGAGACCTGAATGTTACTGTTGGGACTCCAG
CTGTGCAATCCTCCAACAGCCATCTGTAGTGGCAGTTGAAAACTTCAGCAACAACCCCGGAAAGGCT
GGAAAAGATGAAAAAGAATATAGAAATCTGAATACATGGATAGATAAAGCTAACTATTTAGAAAAGCATT
CTAATGCCAAAATTTGGAACATAAGGATTCTGAGGAACTAATATAGATGAGGCATCTGAAAACACGAAAA
GTAATCAACCTGAAGAGGAGCTTGAAAAATTTGTAGGAGTAGATATCCCTTTGTAATGAGGAACTGA
AACTACTGCAAAATGAGTTACTGGATAATGATTCTGAGAAAAGCCCTGACTATACCAACTTTGAACCAATCG
GACCAAGATAATTCAACTGCTGTGCTTCTAAAAATGATGAATCAACACCTTCACCCACAGAAGTCACT
CATTGTGCACTATTTCTAACAGGAAACAATAAAGCAGGCAGAAATACCACCTTTAGGTGAACGTCAATC
AGAAAGCATGCCAGACAGAAAAATGAAAAATGATTTTTTCCATTAGAAGTAAAAATAAAAGATAACTAT
CCAAGCATTTTAAAAGCAGACTCATCTCTATCAGAGGTGGCTTTTTCCACAAAAGAATATAATTCACCAT
CTTTCAGACCAGAATATATAGAATCAAACCAAAATTTCAAGATTGTTTCCAGATAAATTTGAGGATTTACA
TGACATGACCTCATTACACACCTTAAAAAAGTAAAAATCAAGATCAAGGCTTTTAGGAAAAAGCTCAGAT
GATATCCATAACCATGCCAGACACTCTGCAAGACCATATACTGCTCCGGAGGTTAAACAGCAACGAGAAA
GCTACAGTGGAAAAGTTTACAAGTCGTGAATGGTTTCATCAGGCTTAGTTTCATATAAATGATAAAACATC
AGATTATGAAATGCATAAAATGCGGCCAAAAAAATTAAGAGGATAT

ACGCGTACGCGGCCGCTCGAGCAGAACTCATCTCAGAAGAGGATCTGGCAGCAATGATATCCTGGATT
ACAAGGATGACGACGATAAGGTTTAA

Protein Sequence:

>RC206143 protein sequence
Red=Cloning site Green=Tags(s)

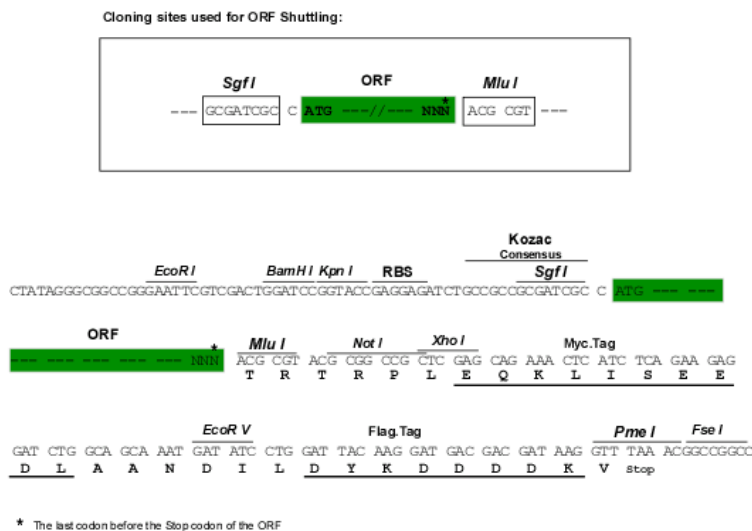
MEPPQETNRPFSTLDNRSGVQVLSATPLLQRNPYSSPDIMHIKSEASSVPYALNQGTTALPKNKQEG
TGHRLNMLRKLKESDSELEITQETPNLVFPGDVVGLGIHIKNCRFMPKISLQHYANLFIKIRISINK
AVKCTKMCSLLSKNDEKNTVIKDFEVKYFSVQVPRRYDDKRNILLELIQYDNREKRAFLLGSVQIHLVE
VIQKGCFFIEEVQVLHGNIFVCRLEVEFMFSYGNFGYGFSQLKPLKQKITEPSMFMNLAPPERTDPVTKV
ITPQTVEYPAFLSPDLNVTVGTPAVQSSNQPSVVRLEKLLQQPRLERLEKMKKEYRNLNNTWIDKANYLESI
LMPKLEHKDSEETNIDEASENTKSNQPEELENIVGVDIPLVNEEAETTANELLDNDSEKGLTIPTLNQS
DQDNSTADASKNDESTPSPTEVHSLCTISNQETIKAGRIPPLGERQSEMPDRMKMNVFFLEVKLKLDNY
PSILKADSSSLSEVAFSPKEYNSPFRPEYIEFKPKFQDCSDKFEDLHDMTSFTHLKKVKSRRLLGKSSD
DIHNHARHSARPYTAPEVKNQRESYSGKFTSRRMVSSGLVHINDKTSDEYEMHKMRPKIKIRGY

TRTRPLEQKLISEEDLAANDILDYKDDDDKV

Chromatograms: https://cdn.origene.com/chromatograms/mk6318_f07.zip

Restriction Sites: SgfI-MluI

Cloning Scheme:



ACCN: NM_152525

ORF Size: 1869 bp

OTI Disclaimer: The molecular sequence of this clone aligns with the gene accession number as a point of reference only. However, individual transcript sequences of the same gene can differ through naturally occurring variations (e.g. polymorphisms), each with its own valid existence. This clone is substantially in agreement with the reference, but a complete review of all prevailing variants is recommended prior to use. [More info](#)

OTI Annotation: This clone was engineered to express the complete ORF with an expression tag. Expression varies depending on the nature of the gene.

Components: The ORF clone is ion-exchange column purified and shipped in a 2D barcoded Matrix tube containing 10ug of transfection-ready, dried plasmid DNA (reconstitute with 100 ul of water).

Reconstitution Method:

1. Centrifuge at 5,000xg for 5min.
2. Carefully open the tube and add 100ul of sterile water to dissolve the DNA.
3. Close the tube and incubate for 10 minutes at room temperature.
4. Briefly vortex the tube and then do a quick spin (less than 5000xg) to concentrate the liquid at the bottom.
5. Store the suspended plasmid at -20°C. The DNA is stable for at least one year from date of shipping when stored at -20°C.

Note: Plasmids are not sterile. For experiments where strict sterility is required, filtration with 0.22um filter is required.

RefSeq: [NM_152525.3](#), [NP_689738.2](#)

RefSeq Size: 2123 bp

RefSeq ORF: 1872 bp

Locus ID: 151254

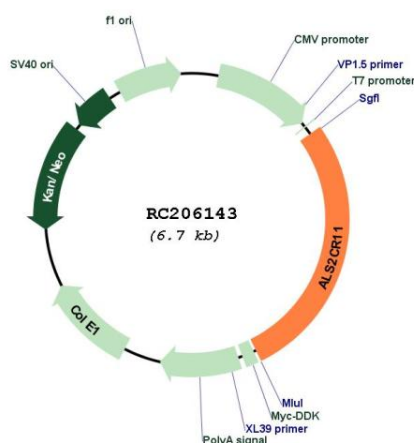
UniProt ID: [Q53TS8](#)

Cytogenetics: 2q33.1

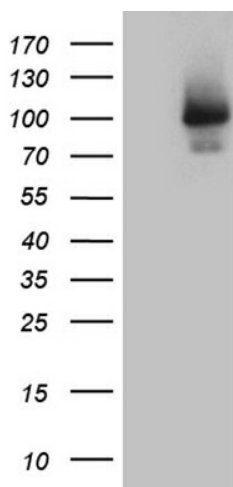
MW: 71.1 kDa

Gene Summary: An autosomal recessive form of juvenile amyotrophic lateral sclerosis was originally mapped to a region of chromosome 2 that includes this gene. The encoded protein contains a calcium-dependent membrane targeting C2 domain. This domain is often found in proteins that are involved in membrane trafficking and signal transduction. [provided by RefSeq, Jun 2016]

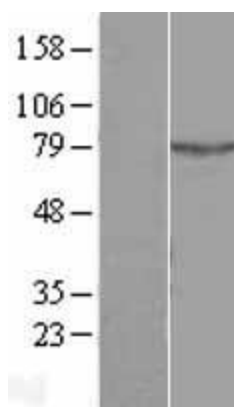
Product images:



Circular map for RC206143



HEK293T cells were transfected with the pCMV6-ENTRY control (Cat# [PS100001], Left lane) or pCMV6-ENTRY ALS2CR11 (Cat# RC206143, Right lane) cDNA for 48 hrs and lysed. Equivalent amounts of cell lysates (5 ug per lane) were separated by SDS-PAGE and immunoblotted with anti-ALS2CR11 (Cat# [TA811585])(1:2000). Positive lysates [LY407479] (100ug) and [LC407479] (20ug) can be purchased separately from OriGene.



Western blot validation of overexpression lysate (Cat# [LY407479]) using anti-DDK antibody (Cat# [TA50011-100]). Left: Cell lysates from untransfected HEK293T cells; Right: Cell lysates from HEK293T cells transfected with RC206143 using transfection reagent MegaTran 2.0 (Cat# [TT210002]).