

Product datasheet for **RC206135**

PLBD2 (NM_173542) Human Tagged ORF Clone

Product data:

Product Type:	Expression Plasmids
Product Name:	PLBD2 (NM_173542) Human Tagged ORF Clone
Tag:	Myc-DDK
Symbol:	PLBD2
Synonyms:	P76
Mammalian Cell Selection:	Neomycin
Vector:	pCMV6-Entry (PS100001)
E. coli Selection:	Kanamycin (25 ug/mL)



[View online »](#)

ORF Nucleotide Sequence:

>RC206135 ORF sequence
 Red=Cloning site Blue=ORF Green=Tags(s)

TTTTGTAATACGACTCACTATAGGGCGGCCGGAATTCGTCGACTGGATCCGGTACCGAGGAGATCTGCC
 GCC**CGGATCGCC**

ATGGTGGGCCAGATGTACTGCTACCCCGCAGCCACCTGGCCCGGGCGCTGACGCGGGCGCTGGCGTGG
 CCCTGGTCTGGCCCTGCTGGTGGCGCCGTTCTGAGCGGCTGGCGGGGCGATCCCAGCGCCGGGGG
 CCGCTGGGCGCGCGATGGGCAGGTCCTCCAGCCTCCCGCAGCCGCTCGGTGCTCCTGGAGCTCTCGGC
 GGCCAGCTGCTTATGGTGGACGGACGCCACCCTGACGCGTGGCCTGGGCCAACCTCACCAACGCCATCC
 GCGAGACTGGGTGGCCCTTCTGGAGCTGGGCACAAGTGCCAATAACAATGACAGCTTGCAGGCCTATGC
 AGCCGGTGTGGTGGAGGCTGCTGTGCGGAGGAGCTCATCTACATGCACTGGATGAACACGGTGGTGAAT
 TACTGCGGCCCTTCGAGTATGAAGTCGGCTACTGCGAGAGGCTGAAGAGCTTCTGGAGGCCAACCTAG
 AGTGGATGCAGGAAGAGATGGAGTCAAACCCAGACTCACCTTACTGGCACCAGGTGCGGCTGACCCTCT
 GCAGCTGAAAGGCTGGAGGACAGCTACGAAGGCCGTGTGAGCTTCCAGCTGGGAAGTTACCATCAA
 CCCTTGGGGTTCCTCCTGCTGCAGCTCTCTGGGACCTGGAAGACCTGGAGCTGGCCCTGAACAAGACCA
 AGATCAAACCTTCTCTGGGCTCTGGCTCCTGTTCTGCCCTCATCAAGCTGCTCCCTGGCCAGAGTGACCT
 CCTGGTTGCCACAACACCTGGAACAACCTACCAGCACATGCTGCGTGTCAACAAGTACTGGTCCAG
 TTCCGGGAAGGCCCTGGGGGACTACCCGCTGGTTCGCGCAACAAGCTGGTCTTCTCCTCCTACCCCG
 GCACCATCTTCTCCTGCGACGACTTCTACATCCTGGGCAGTGGGCTGGTACACTGGAGACCACCATGG
 CAACAAGAACCAGCCCTGTGGAAGTATGTGCGGCCAGGGCTGTGTGCTGGAGTGGGTACGCAACATC
 GTGGCCAAACCCTGGCCTCGGATGGGGCCACCTGGGCAGACATCTTCAAGAGTTCAACAGCGGCACGT
 ATAACAACCAAGTGGATGATCGTGGACTACAAGGCGTTTCAAGAGTTCAAGAGTTCAACAGCGGCACGT
 GCTTACCATCCTGGAGCAGATCCCGGCATGGTGGTGGTGGCTGACAAGACCTCGGAGCTCTACCAGAA
 ACCTACTGGGCCAGCTACAACATACCGTCTTCGAGACTGTGTTCAATGCCAGTGGGCTGCAGGCCCTAG
 TGGCCAGTATGGGACTGGTTTTCTTATGACGGGAGCCCGGGCCAGATCTTCCGGCGGAACCAGTC
 ACTGGTACAAGACATGGACTCCATGGTCAAGGCTGATGAGGTACAATGACTTCTCCATGACCCTCTGTCA
 CTGTGCAAAGCCTGCAACCCCGCCCAATGGGGAGAATGCTATCTCCGCCGCTCCGACCTCAACCCGG
 CCAATGGTCTCTACCCCTTCAAGGCCCTGCGTCAGCGCTCCATGGGGTATCGATGTGAAGGTGACCAG
 CATGCTACTGGCCAGGATCCTGAGCCTGCTGGCGCCAGCGGTCCACGTGGGACCAGGTGCCCCGGTTC
 CAGTGGAGCACCTCGCCCTTCAAGGCCCTGCTGCACATGGGCCAGCCAGACCTCTGGAAGTTCGCGCCTG
 TCAAGTTTCATGGGAC

ACGCGTACGCGGCCGCTCGAGCAGAAACTCATCTCAGAAGAGGATCTGGCAGCAAATGATATCCTGGATT
 ACAAGGATGACGACGATAAGGTTTAA

Protein Sequence:

>RC206135 protein sequence
 Red=Cloning site Green=Tags(s)

MVGMQMYCPGSHLARALTRALALALVLLVGPFLSGLAGAIAPAGGRWARDGQVPPASRSRSVLLDVSA
 GQLLMVDGRHPDAVAVANLNAIRETGWAFLELGTSGQYNSLQAYAAGVVEAAVSEELIYMHWMNTVVN
 YCGPFYEYVGYCERLKSFLLEANLEWMQEEMESNPDSPIYWHQVRLTLLQLKGLSDSYEGRVSFPAGKFTIK
 PLGFLLQLSGDLEDLELALNKTIKPSLGSWSCSALIKLLPGQSDLLVAHNTWNNYQHMLRVIKKYWLQ
 FREGPWGDYPLVPGNKLVFSSYPGTIFSCDDFYILGSLVTLETTIGNKNPALWKYVRPRGCVLEWVRNI
 VANRLASDGATWADIFKRFNSGTYNQWMIVDYKAFIPGGPSPGSRVLTILEQIPGMVVVADKTSLEYQK
 TYWASYNIPSFETVFNASGLQALVAQYGDWF SYDGSPPRAQIFRRNQSLVQDMDSMVRMLMRYNDFLHDPLS
 LKACNPQPNGENAI SARSDLNANGSYPFKALRQRSHGGIDVKVTSMSLARILSLLAASGPTWDQVPPF
 QWSTSPFSGLLHMQPDLWKFAPVKVSWD

TRTRPLEQKLISEEDLAANDILDYKDDDDKV

Chromatograms:

https://cdn.origene.com/chromatograms/mk6804_c01.zip

Restriction Sites: SgfI-MluI

Cloning Scheme:



ACCN: NM_173542

ORF Size: 1767 bp

OTI Disclaimer: The molecular sequence of this clone aligns with the gene accession number as a point of reference only. However, individual transcript sequences of the same gene can differ through naturally occurring variations (e.g. polymorphisms), each with its own valid existence. This clone is substantially in agreement with the reference, but a complete review of all prevailing variants is recommended prior to use. [More info](#)

OTI Annotation: This clone was engineered to express the complete ORF with an expression tag. Expression varies depending on the nature of the gene.

Components: The ORF clone is ion-exchange column purified and shipped in a 2D barcoded Matrix tube containing 10ug of transfection-ready, dried plasmid DNA (reconstitute with 100 ul of water).

- Reconstitution Method:**
1. Centrifuge at 5,000xg for 5min.
 2. Carefully open the tube and add 100ul of sterile water to dissolve the DNA.
 3. Close the tube and incubate for 10 minutes at room temperature.
 4. Briefly vortex the tube and then do a quick spin (less than 5000xg) to concentrate the liquid at the bottom.
 5. Store the suspended plasmid at -20°C. The DNA is stable for at least one year from date of shipping when stored at -20°C.

Note: Plasmids are not sterile. For experiments where strict sterility is required, filtration with 0.22um filter is required.

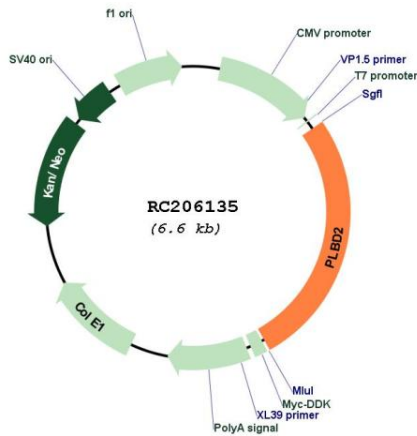
RefSeq: [NM_173542.2](#), [NP_775813.1](#)

RefSeq Size: 2832 bp

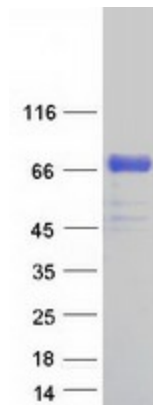
RefSeq ORF: 1770 bp

Locus ID: 196463
UniProt ID: [Q8NHP8](#)
Cytogenetics: 12q24.13
Protein Families: Transmembrane
MW: 65.5 kDa
Gene Summary: Putative phospholipase.[UniProtKB/Swiss-Prot Function]

Product images:



Circular map for RC206135



Coomassie blue staining of purified PLBD2 protein (Cat# [TP306135]). The protein was produced from HEK293T cells transfected with PLBD2 cDNA clone (Cat# RC206135) using MegaTran 2.0 (Cat# [TT210002]).