

## Product datasheet for RC206131

### GPD1L (NM\_015141) Human Tagged ORF Clone

#### Product data:

Product Type:	Expression Plasmids
Product Name:	GPD1L (NM_015141) Human Tagged ORF Clone
Tag:	Myc-DDK
Symbol:	GPD1L
Synonyms:	GPD1-L
Mammalian Cell Selection:	Neomycin
Vector:	pCMV6-Entry (PS100001)
E. coli Selection:	Kanamycin (25 ug/mL)
ORF Nucleotide Sequence:	>RC206131 ORF sequence Red=Cloning site Blue=ORF Green=Tags(s)

TTTTGTAATACGACTCACTATAGGGCGGCCGGAATTCGTCGACTGGATCCGGTACCGAGGAGATCTGCC  
GCC**CGATCGCC**

ATGGCAGCGCGCCCTGAAAGTGTGCATCGTGGGCTCGGGAACTGGGGTTCAGCTGTTGCAAAAATAA  
TTGGTAATAATGTCAAGAACTTCAGAAATTTGCCTCCACAGTCAAGATGTGGTCTTTGAAGAACAGT  
GAATGGCAGAAAAGTACAGACATCATAAATAATGACCATGAAAATGTAATAATCTTCTGGACACAAG  
CTGCCAGAAAATGTGGTTGCCATGTCAAATCTTAGCGAGGCTGTGCAGGATGCAGACCTGCTGGTGTTC  
TCATCCCCACCAGTTCATTCACAGAATCTGTGATGAGATCACTGGGAGAGTGCCCAAGAAAGCGCTGGG  
AATCACCCCTCATCAAGGGCATAGACGAGGGCCCCGAGGGGCTGAAGCTCATTCTGACATCATCCGTGAG  
AAGATGGGATTGACATCAGTGTGCTGATGGGAGCCAACATTGCCAATGAGGTGGCTGCAGAGAAGTCTT  
GTGAGACCACCATCGGCAGCAAAGTAATGGAGAACGGCCTTCTCTCAAAGAACTTCTGCAGACTCCAAA  
TTTTCGAATTACCGTGGTTGATGATGCAGACACTGTTGAACTATGTGGTGCCTTAAGAACATCGTAGCT  
GTGGGAGCTGGTCTGCGACGGCCTCCGCTGTGGAGACAACACCAAAGCGGCCGTATCCGCTGGGAC  
TCATGAAATGATTGCTTTTCCAGGATCTTCTGCAAAGGCCAAGTGTCTACAGCCACCTCCTAGAGAG  
CTGCGGGGTGGCCGACCTGATCACCACCTGTTACGGAGGGCGAACCCGAGGGTGGCCGAGGCCTTCGCC  
AGAACTGGGAAGACCATTGAAGAGTTGGAGAAGGAGATGCTGAATGGGCAAAAGTCCAAGGACCGCAGA  
CTTCTGCTGAAGGTACCGCATCTCAAACAGAAGGGACTACTGGACAAGTTCCATTGTTTACTGCAGT  
GTATCAGATCTGCTACGAAAGCAGACCAGTTCAAGAGATGTTGTCTTGTCTTTCAGAGCCATCCAGAGCAT  
ACA

**ACGCGT**ACGCGGCCGCTCGAGCAGAACTCATCTCAGAAGAGGATCTGGCAGCAAATGATATCCTGGATT  
ACAAGGATGACGACGATAAGGTTAA



[View online »](#)

**Protein Sequence:** >RC206131 protein sequence  
Red=Cloning site Green=Tags(s)

MAAAPLKVCIVGSGNWGS AVAKIIGNNVKKLQKFASTVKMWVFEETVNGRKLTDIINNDHENVKYLPGHK  
 LPENNVAMSNLSEAVQDADLLVFVIPHQFIHRICDEITGRVPKKALGITLIKIDEGPEGLKLISDIIRE  
 KMGIDISVLMGANIANEVAAEKFCETTIGSKVMENGLLFKELLQTPNFRI TVVDDADTVELCGALKNIVA  
 VGAGFCDGLRCGDNTKAAVIRLGLMEMIAFARIFCKGQVSTATFLESCGVADLITTCYGGRRNRV AEAFA  
 RTGKTIIEELEKEMLNGQKLQGPQTS AEVYRILKQKGLLDKFLFTAVYQICYESRPVQEMLSCLQSHPEH  
 T

TRTRPLEQKLISEEDLAANDILDYKDDDDKV

**Chromatograms:** [https://cdn.origene.com/chromatograms/mk6072\\_d02.zip](https://cdn.origene.com/chromatograms/mk6072_d02.zip)

**Restriction Sites:** SgfI-MluI

**Cloning Scheme:**



\* The last codon before the Stop codon of the ORF

**ACCN:** NM\_015141

**ORF Size:** 1053 bp

**OTI Disclaimer:** The molecular sequence of this clone aligns with the gene accession number as a point of reference only. However, individual transcript sequences of the same gene can differ through naturally occurring variations (e.g. polymorphisms), each with its own valid existence. This clone is substantially in agreement with the reference, but a complete review of all prevailing variants is recommended prior to use. [More info](#)

**OTI Annotation:** This clone was engineered to express the complete ORF with an expression tag. Expression varies depending on the nature of the gene.

**Components:** The ORF clone is ion-exchange column purified and shipped in a 2D barcoded Matrix tube containing 10ug of transfection-ready, dried plasmid DNA (reconstitute with 100 ul of water).

**Reconstitution Method:**

1. Centrifuge at 5,000xg for 5min.
2. Carefully open the tube and add 100ul of sterile water to dissolve the DNA.
3. Close the tube and incubate for 10 minutes at room temperature.
4. Briefly vortex the tube and then do a quick spin (less than 5000xg) to concentrate the liquid at the bottom.
5. Store the suspended plasmid at -20°C. The DNA is stable for at least one year from date of shipping when stored at -20°C.

**Note:** Plasmids are not sterile. For experiments where strict sterility is required, filtration with 0.22um filter is required.

**RefSeq:** [NM\\_015141.2](#), [NP\\_055956.1](#)

**RefSeq Size:** 4068 bp

**RefSeq ORF:** 1056 bp

**Locus ID:** 23171

**UniProt ID:** [Q8N335](#)

**Cytogenetics:** 3p22.3

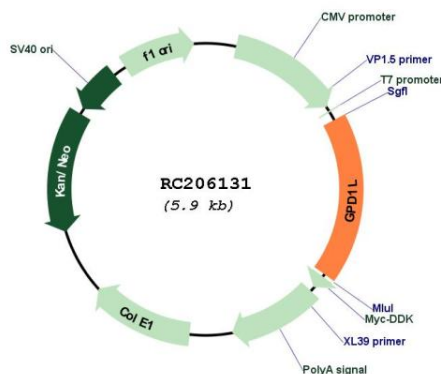
**Domains:** NAD\_Gly3P\_dh

**Protein Pathways:** Glycerophospholipid metabolism

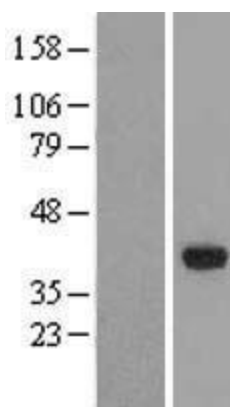
**MW:** 38.4 kDa

**Gene Summary:** The protein encoded by this gene catalyzes the conversion of sn-glycerol 3-phosphate to glycerone phosphate. The encoded protein is found in the cytoplasm, associated with the plasma membrane, where it binds the sodium channel, voltage-gated, type V, alpha subunit (SCN5A). Defects in this gene are a cause of Brugada syndrome type 2 (BRS2) as well as sudden infant death syndrome (SIDS). [provided by RefSeq, Jul 2010]

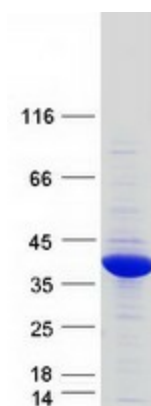
### Product images:



Circular map for RC206131



Western blot validation of overexpression lysate (Cat# [LY414689]) using anti-DDK antibody (Cat# [TA50011-100]). Left: Cell lysates from untransfected HEK293T cells; Right: Cell lysates from HEK293T cells transfected with RC206131 using transfection reagent MegaTran 2.0 (Cat# [TT210002]).



Coomassie blue staining of purified GPD1L protein (Cat# [TP306131]). The protein was produced from HEK293T cells transfected with GPD1L cDNA clone (Cat# RC206131) using MegaTran 2.0 (Cat# [TT210002]).