

Product datasheet for **RC206130**

DIXDC1 (NM_033425) Human Tagged ORF Clone

Product data:

| | |
|---------------------------|---|
| Product Type: | Expression Plasmids |
| Product Name: | DIXDC1 (NM_033425) Human Tagged ORF Clone |
| Tag: | Myc-DDK |
| Symbol: | DIXDC1 |
| Synonyms: | CCD1 |
| Mammalian Cell Selection: | Neomycin |
| Vector: | pCMV6-Entry (PS100001) |
| E. coli Selection: | Kanamycin (25 ug/mL) |



[View online »](#)

ORF Nucleotide Sequence:

>RC206130 ORF sequence
 Red=Cloning site Blue=ORF Green=Tags(s)

TTTTGTAATACGACTCACTATAGGGCGGCCGGGAATTCGTCGACTGGATCCGGTACCGAGGAGATCTGCC
 GCC**CGGATCGCC**

ATGGGAGGGACGCAAGTCAAATGCCTGACTTCACCCAGTCCAATCCACAGTGCAAAGAGCGAGTCCATTA
 TAACCCAGTCAGAAGAGAAGGCAGATTTTGTGATTATTCCCGCTGAAGGAATAGAGAACAGAACAGAAGG
 GACAGATTCTCCATTATCTCGAGACTGGCGGCCAGGGAGCCCTGGAACCTATCTGGAGACCTCATGGGAA
 GAACAGCTGTTGGAAACAAGAATATTTAGAAAAAGAAATGGAGGAAGCAAAGAAAATGATATCAGGAC
 TACAGGCCTTACTGCTCAATGGATCCTTACCTGAAGATGAACAGGAGAGGCCCTTGGCCCTCTGTGAACC
 AGGTGTCAATCCCGAGGAACAAGTATTATAATCCAAAGTCGTCTGGATCAGAGTATGGAGGAGAATCAG
 GACTTAAAGAAGGAAGTCTGAAATGTAACAAGAAGCCAGAACTTACAGGGGATAAAGGATGCCTTGC
 AGCAGAGATTGACTCAGCAGGACACATCTGTTCTTCAGCTCAAACAAGAGCTACTGAGGGCAAATATGGA
 CAAAGATGAGCTGCACAACCAGAATGTGGATCTGCAGAGGAAGCTAGATGAGAGGAACCGGCTCTTGGGA
 GAATATAAAAAAGAGCTGGGGCAGAAGGATCGCCTTCTTCAGCAGCACCAGGCCAAGTTAGAAGAAGCAC
 TCCGAAAACCTCTCTGATGTCACTTACCACCAGGTGGATCTAGAGCGAGAGCTAGAACAACAAGATGTCTT
 CTTGGCTCACTGTATGAAAAGAGAGGCAGATGAGGCGACCAACTACAACAGTCACAACCTCTCAAAGCAAT
 GGTTCCTCCTTCCAACGGCAGGAAAAGGAGCTACTTCAGTCAGCAACAGAGGGACCAGCGACCTGCAGC
 TTGTTTCGAGATGCTCTCCGCAGCCTGCGCAACAGCTTCAGTGGCCACGATCCTCAGCACCACACTATTGA
 CAGCTTGGAGCAGGGCATTCTAGCCTCATGGAGCGCTGCATGTTATGGAGACGAGAAGAAACAAGAA
 AGAAAGGTTCCGGTCAAGTCACCCAGAAGTCAAGTAGGTAGTGAATACCGGGAGTCTGGCCCCCTAACT
 CAAAGTTGCCTCACTCACAGAGCTTCCAAGTGCAGCAGCACCTGTACTAAAGTGTCTATTTCTACTGA
 CCGGTCACTTACGCCCTTTCATGGTCAATATACCAAAGAGGTTGGAGGAGGTGACGTTAAAGGATTTTAAA
 GCAGCTATTGATCGGGAAGGAAATCACCGGTATCACTTCAAAGCACTGGATCCAGAGTTTGGCACTGTCA
 AAGAGGAGATTTCCATGATGATGATGCCATCCCTGGATGGGAAGGGAAAATTGTAGCTTGGGTGGAAGA
 AGACCATGGAGAGAAT

ACGGTACGCGGCCGCTCGAGCAGAACTCATCTCAGAAGAGGATCTGGCAGCAATGATATCCTGGATT
ACAAGGATGACGACGATAAGGTTTAA

Protein Sequence:

>RC206130 protein sequence
 Red=Cloning site Green=Tags(s)

MGGTQVKCLTSPSPIHSAKSESIIITQSEKADFVIIIPAEIGIENRTEGTDSPLSRDWRPSPGTYLETSE
 EQLLEQQEYLEKEMEEAKKMI SGLQALLLNGSLPEDEQERPLALCEPGVNPEEQLI I IQSRLDQSMENQ
 DLKKELLKCKQEARNLQGIKDALQQRLTQQDTSVLQLKQELLRANMDKDELHNQNVDLQRKLDERNRLG
 EYKKELGQKDRLLQQHQAKLEEALRKLSVSYHQVDLERELEHKDVL LAHCMKREADEATNYNSHNSQSN
 GFLLPTAGKGATSVSNRGTSDLQLVRDALRSLRNSFSGHDPQHHTIDSLEQGISSLMERLHVMETQKKQE
 RKVVRVKSPTQVGSEYRESWPPNSKLPHSQSSPTVSSTCTKVLYFTDRSLTPFMVNI PKRLEEVTLKDFK
 AAIDREGNHRYHFKALDPEFGTVKEEIFHDDDAIPGWEGKIVAWVEEDHGEN

TRTRPLEQKLI SEEDLAANDILDYKDDDDKV

Chromatograms:

https://cdn.origene.com/chromatograms/mk6515_a07.zip

Restriction Sites:

Sgfl-MluI

Cloning Scheme:

Cloning sites used for ORF Shutting:



* The last codon before the Stop codon of the ORF

ACCN: NM_033425

ORF Size: 1416 bp

OTI Disclaimer: The molecular sequence of this clone aligns with the gene accession number as a point of reference only. However, individual transcript sequences of the same gene can differ through naturally occurring variations (e.g. polymorphisms), each with its own valid existence. This clone is substantially in agreement with the reference, but a complete review of all prevailing variants is recommended prior to use. [More info](#)

OTI Annotation: This clone was engineered to express the complete ORF with an expression tag. Expression varies depending on the nature of the gene.

Components: The ORF clone is ion-exchange column purified and shipped in a 2D barcoded Matrix tube containing 10ug of transfection-ready, dried plasmid DNA (reconstitute with 100 ul of water).

Reconstitution Method:

1. Centrifuge at 5,000xg for 5min.
2. Carefully open the tube and add 100ul of sterile water to dissolve the DNA.
3. Close the tube and incubate for 10 minutes at room temperature.
4. Briefly vortex the tube and then do a quick spin (less than 5000xg) to concentrate the liquid at the bottom.
5. Store the suspended plasmid at -20°C. The DNA is stable for at least one year from date of shipping when stored at -20°C.

RefSeq: [NM_033425.1](#), [NP_219493.1](#)
RefSeq Size: 5496 bp

RefSeq ORF: 1419 bp

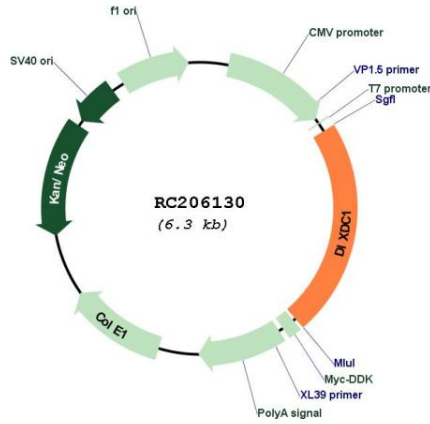
Locus ID: 85458

UniProt ID: [Q155Q3](#)
Cytogenetics: 11q23.1

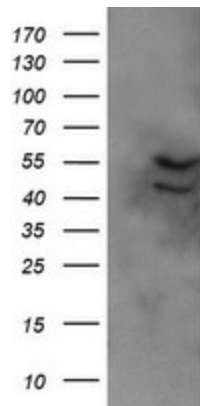
MW: 53.9 kDa

Gene Summary: The protein encoded by this gene is a positive regulator of the Wnt signaling pathway. The encoded protein is found associated with gamma tubulin at the centrosome. Alternative splicing results in multiple transcript variants encoding different isoforms. [provided by RefSeq, Jun 2013]

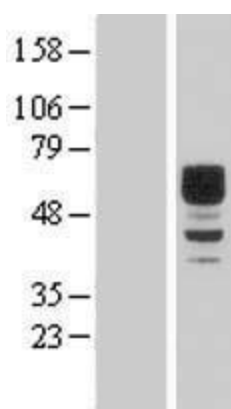
Product images:



Circular map for RC206130



HEK293T cells were transfected with the pCMV6-ENTRY control (Cat# [PS100001], Left lane) or pCMV6-ENTRY DIXDC1 (Cat# RC206130, Right lane) cDNA for 48 hrs and lysed. Equivalent amounts of cell lysates (5 ug per lane) were separated by SDS-PAGE and immunoblotted with anti-DIXDC1 (Cat# [TA505550]). Positive lysates [LY409548] (100ug) and [LC409548] (20ug) can be purchased separately from OriGene.



Western blot validation of overexpression lysate (Cat# [LY409548]) using anti-DDK antibody (Cat# [TA50011-100]). Left: Cell lysates from untransfected HEK293T cells; Right: Cell lysates from HEK293T cells transfected with RC206130 using transfection reagent MegaTran 2.0 (Cat# [TT210002]).