

## Product datasheet for RC206128

### Kir7.1 (KCNJ13) (NM\_002242) Human Tagged ORF Clone

#### Product data:

Product Type:	Expression Plasmids
Product Name:	Kir7.1 (KCNJ13) (NM_002242) Human Tagged ORF Clone
Tag:	Myc-DDK
Symbol:	Kir7.1
Synonyms:	KIR1.4; KIR7.1; LCA16; SVD
Mammalian Cell Selection:	Neomycin
Vector:	pCMV6-Entry (PS100001)
E. coli Selection:	Kanamycin (25 ug/mL)
ORF Nucleotide Sequence:	>RC206128 ORF sequence Red=Cloning site Blue=ORF Green=Tags(s)

TTTTGTAATACGACTCACTATAGGGCGCCGGAATTCGTCGACTGGATCCGGTACCGAGGAGATCTGCC  
GCC**CGATCGC**C

ATGGACAGCAGTAATTGCAAAGTTATTGCTCCTCTCCTAAGTCAAAGATACCGGAGGATGGTCACCAAGG  
ATGGCCACAGCACACTTCAAATGGATGGCGCTCAAAGAGGTCTTGCATATCTTCGAGATGCTTGGGAAT  
CCTAATGGACATGCGCTGGCGTTGGATGATGTTGGTCTTTCTGCTTCTTTGTTGTCCACTGGCTTGTC  
TTTGCAGTGCTCTGGTATGTTCTGGCTGAGATGAATGGTATCTGGAAGTATGATCATGATGCCCCACCTG  
AAAACCACACTATCTGTGTCAAGTATATACCAGTTTCACAGCTGCATTCTCTTCTCCCTGGAGACACA  
ACTCACAATTGGTTATGGTACCATGTTCCCCAGTGGTACTGTCCAAGTGAATCGCCTTACTTGCCATA  
CAAATGCTCCTAGGCCTCATGCTAGAGGCTTTTATCACAGGTGCTTTTGTGGCGAAGATTGCCCGGCCAA  
AAAATCGAGCTTTTTCAATTCGCTTTACTGACATAGCAGTAGTAGCTCACATGGATGGCAAACCTAATCT  
TATCTTCCAAGTGGCCAAACCCGACCTAGCCCTAACCAGTGTCCGGGTCTCAGCTGTACTCTATCAG  
GAAAGAGAAAATGGCAAACCTACCAGACCAGTGTGGATTTCCACCTTGATGGCATCAGTTCTGACGAAT  
GTCCATTCTTCATCTTTCCACTAACGTAATCACTCCATTACACCATCAAGTCCCTCTGGCTACTCTGCT  
CCAGCATGAAAATCCTTCTCACTTTGAATTAGTTGTATTCTTTTCAGCAATGCAGGAGGGCACTGGAGAA  
ATATGCCAAAGGAGGACATCCTACCTACAGTCTGAAATCATGTTACATCACTGTTTTGTCATCTGTGTA  
CCCGAGGTTCCAAATGTGAATATCAAATCAAGATGGAGAATTTTGACAAGACTGTCCCTGAATTTCCAAC  
TCCTCTGGTTTCTAAAAGCCCAAACAGGACTGACCTGGATATCCACATCAATGGCAAAGCATTGACAAT  
TTTCAGATCTCTGAAACAGGACTGACAGAA

**ACGCGT**ACGCGGCCGCTCGAGCAGAAACTCATCTCAGAAGAGGATCTGGCAGCAAATGATATCCTGGATT  
ACAAGGATGACGACGATAAGGTTAA



[View online »](#)

**Protein Sequence:** >RC206128 protein sequence  
Red=Cloning site Green=Tags(s)

MSSSNCKVIAPLLSQRYRRMVTKDGHSTLQMDGAQRGLAYLRDAWGILMDMRWRWMLVFSASFVHVLV  
 FAVLWYVLAEMNGDLELDHDAPPENHTICVKYITSFTAASFSLLETQLTIGYGTMFPSGDCPSAIALLAI  
 QMLLGLMLEAFITGAFVAKIARPKNRAF SIRFTDI AVVAHMDGKPNLIFQVANTRPSPLTSVRVSAVLYQ  
 ERENGKLYQTSVDFHLDGISSDECPFFIFPLTYHYSITPSSPLATLLQHENPSHFELVVFLSAMQEGTGE  
 ICQRRTSYLQSEIMLHHCFAALLTRGSKCEYQIKMENFDKTVPEFPTPLVSKSPNRTDLDIHINGQSIDN  
 FQISETGLTE

TRTRPLEQKLISEEDLAANDILDYKDDDDKV

**Chromatograms:** [https://cdn.origene.com/chromatograms/mk6072\\_c12.zip](https://cdn.origene.com/chromatograms/mk6072_c12.zip)

**Restriction Sites:** SgfI-MluI

**Cloning Scheme:**



\* The last codon before the Stop codon of the ORF

**ACCN:** NM\_002242

**ORF Size:** 1080 bp

**OTI Disclaimer:** The molecular sequence of this clone aligns with the gene accession number as a point of reference only. However, individual transcript sequences of the same gene can differ through naturally occurring variations (e.g. polymorphisms), each with its own valid existence. This clone is substantially in agreement with the reference, but a complete review of all prevailing variants is recommended prior to use. [More info](#)

**OTI Annotation:** This clone was engineered to express the complete ORF with an expression tag. Expression varies depending on the nature of the gene.

**Components:** The ORF clone is ion-exchange column purified and shipped in a 2D barcoded Matrix tube containing 10ug of transfection-ready, dried plasmid DNA (reconstitute with 100 ul of water).

**Reconstitution Method:**

1. Centrifuge at 5,000xg for 5min.
2. Carefully open the tube and add 100ul of sterile water to dissolve the DNA.
3. Close the tube and incubate for 10 minutes at room temperature.
4. Briefly vortex the tube and then do a quick spin (less than 5000xg) to concentrate the liquid at the bottom.
5. Store the suspended plasmid at -20°C. The DNA is stable for at least one year from date of shipping when stored at -20°C.

**Note:** Plasmids are not sterile. For experiments where strict sterility is required, filtration with 0.22um filter is required.

**RefSeq:** [NM\\_002242.2](#), [NP\\_002233.1](#)

**RefSeq Size:** 3609 bp

**RefSeq ORF:** 1083 bp

**Locus ID:** 3769

**UniProt ID:** [O60928](#)

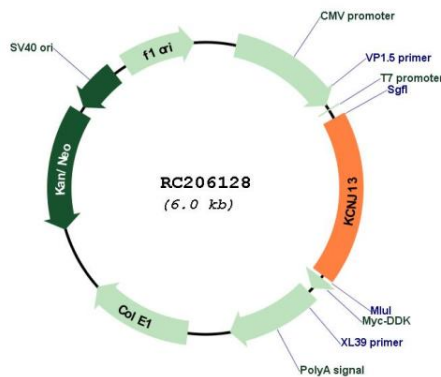
**Cytogenetics:** 2q37.1

**Protein Families:** Druggable Genome, Ion Channels: Potassium, Transmembrane

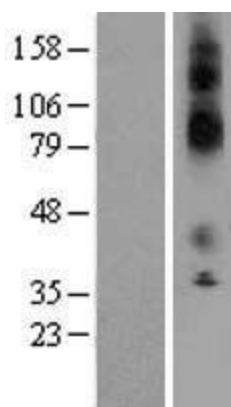
**MW:** 40.6 kDa

**Gene Summary:** This gene encodes a member of the inwardly rectifying potassium channel family of proteins. Members of this family form ion channel pores that allow potassium ions to pass into a cell. The encoded protein belongs to a subfamily of low signal channel conductance proteins that have a low dependence on potassium concentration. Mutations in this gene are associated with snowflake vitreoretinal degeneration. Alternate splicing results in multiple transcript variants.[provided by RefSeq, Feb 2010]

## Product images:



Circular map for RC206128



Western blot validation of overexpression lysate (Cat# [LY419447]) using anti-DDK antibody (Cat# [TA50011-100]). Left: Cell lysates from untransfected HEK293T cells; Right: Cell lysates from HEK293T cells transfected with RC206128 using transfection reagent MegaTran 2.0 (Cat# [TT210002]).