

Product datasheet for RC206126

ELMOD1 (NM_018712) Human Tagged ORF Clone

Product data:

Product Type:	Expression Plasmids
Product Name:	ELMOD1 (NM_018712) Human Tagged ORF Clone
Tag:	Myc-DDK
Symbol:	ELMOD1
Mammalian Cell Selection:	Neomycin
Vector:	pCMV6-Entry (PS100001)
E. coli Selection:	Kanamycin (25 ug/mL)
ORF Nucleotide Sequence:	>RC206126 ORF sequence Red=Cloning site Blue=ORF Green=Tags(s)

TTTTGTAATACGACTCACTATAGGGCGGCCGGAATTCGTCGACTGGATCCGGTACCGAGGAGATCTGCC
GCC**CGATCGCC**

ATGAAGCACTTCCTGAGAATGTTGATCCAGGTATGCCTGTATTTTTACTGTAAATTTCTGTGGCGCTGCC
TGAAATTTGTAATGAGGAAGCTAACTGGAAGATGTGAACTACAACGGATCTGTTATAATACCAAGCCGGG
AGCTTCTAGAACCATGAAAATCGAAACATCACTGAGGGATTCTAAAAGTAAGCTGTTGCAGACTTCTGTG
AGTGTTCACCCCGACGCTATTGAAAAAAGTATAGAAGATATCATGGAAGTAAAAAATTAATCCTGACG
TAAATCCACAGCTGGGAATCTCTTTCAGGCTTGCCTTTCGAAATCGTTGGGTACAGGAACCTTATTGC
AGATGTGAAAAAAGTGCCTAGAGAGGCCTATGATTCTGATAATCCCAACATGAAGAAATGCTTTTGAAG
TTATGAAATTTCTGAAGCCAATACTCCACTGGAATCTCGGATTTCTAAGCAGTGGTGTGAAATGGTT
TCCAAGGTGATGATCCTAAAACAGACTTTCGAGGAATGGGACTTCTGGGACTGTACAATTTGCAGTATTT
CGCGGAAAGGGATGCCACAGCAGCTCAGCAGGTCTGTCTGACTCTTTCATCCGAAATGCAGGGATATC
ACTAAAGAAGAAATAAGCAAATTCAGCAAAGCAGAATGGGAGAAGAAAAGGATGGATAAGGCAATTTGGGT
ACTCATTTGCAATTTGGGCATCAATAAAGTACCTGGCATATAATCTACTGGTCAGCGGAGCTCTAAA
AACCCATTTCTACAATATCGCCCCAGAAGCTCCAACATTGTCTCACTTTCAGCAAACATTCTGCTATTTG
ATGCATGAATTTTATAAGTTTTGGATCGAAGAGGACCCCATGGACATAATGGAATTTAATCGTGTGAGGG
AGAAATTCGCAAGAGGATCATCAACAGCTGCAGAACCAGACATGGCGCTGTGCCACATTTTGTCTG
CTCGGAAGGTTTAAATCAACATG

ACGCGTACGCGGCCGCTCGAGCAGAAACTCATCTCAGAAGAGGATCTGGCAGCAAATGATATCCTGGATT
ACAAGGATGACGACGATAAGGTTTAA



[View online »](#)

Protein Sequence: >RC206126 protein sequence
Red=Cloning site Green=Tags(s)

MKHFLRMLIQVCLYFYCKFLWRCLKFVMRKL TGRCELQRICYNTKPGASRTMKIETSLRDSKSKLLQTSV
 SVHPDAIEKTIEDIMELKKINPDVNPQLGISLQACLLQIVGYRNL IADVEKLRREAYSDNPQHEMLLK
 LWKFLKPNTPLESRISKQWCEIGFQGDDPKTDFRGMGLLGLYNLQYFAERDATAAQVLSDSLHPKCRDI
 TKEEISKFSKAWEKRMKDAIGYSFAIVGINITDLAYNLLVSGALKTHFYNI APEAPTL SHFQQTFCYL
 MHEFHKFWIEEDPMDIMEFNVRVREKFRKRIIKQLQNPDMALCPHFAASEGLINM

TRTRPLEQKLISEEDLAANDILDYKDDDDKV

Chromatograms: https://cdn.origene.com/chromatograms/mk6317_e12.zip

Restriction Sites: Sgfl-MluI

Cloning Scheme:

Cloning sites used for ORF Shuttling:



ACCN: NM_018712

ORF Size: 1002 bp

OTI Disclaimer: The molecular sequence of this clone aligns with the gene accession number as a point of reference only. However, individual transcript sequences of the same gene can differ through naturally occurring variations (e.g. polymorphisms), each with its own valid existence. This clone is substantially in agreement with the reference, but a complete review of all prevailing variants is recommended prior to use. [More info](#)

OTI Annotation: This clone was engineered to express the complete ORF with an expression tag. Expression varies depending on the nature of the gene.

Components: The ORF clone is ion-exchange column purified and shipped in a 2D barcoded Matrix tube containing 10ug of transfection-ready, dried plasmid DNA (reconstitute with 100 ul of water).

Reconstitution Method:

1. Centrifuge at 5,000xg for 5min.
2. Carefully open the tube and add 100ul of sterile water to dissolve the DNA.
3. Close the tube and incubate for 10 minutes at room temperature.
4. Briefly vortex the tube and then do a quick spin (less than 5000xg) to concentrate the liquid at the bottom.
5. Store the suspended plasmid at -20°C. The DNA is stable for at least one year from date of shipping when stored at -20°C.

Note: Plasmids are not sterile. For experiments where strict sterility is required, filtration with 0.22um filter is required.

RefSeq: [NM_018712.4](#)

RefSeq Size: 3006 bp

RefSeq ORF: 1005 bp

Locus ID: 55531

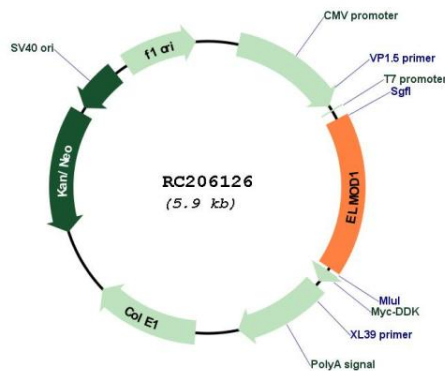
UniProt ID: [Q8N336](#)

Cytogenetics: 11q22.3

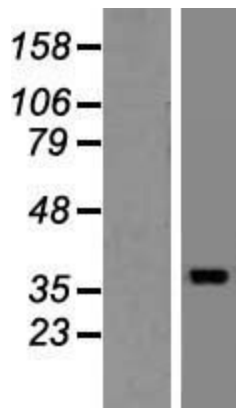
MW: 39.1 kDa

Gene Summary: Acts as a GTPase-activating protein (GAP) toward guanine nucleotide exchange factors like ARL2, ARL3, ARF1 and ARF6, but not for GTPases outside the Arf family.[UniProtKB/Swiss-Prot Function]

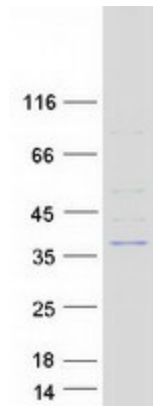
Product images:



Circular map for RC206126



Western blot validation of overexpression lysate (Cat# [LY412885]) using anti-DDK antibody (Cat# [TA50011-100]). Left: Cell lysates from untransfected HEK293T cells; Right: Cell lysates from HEK293T cells transfected with RC206126 using transfection reagent MegaTran 2.0 (Cat# [TT210002]).



Coomassie blue staining of purified ELMOD1 protein (Cat# [TP306126]). The protein was produced from HEK293T cells transfected with ELMOD1 cDNA clone (Cat# RC206126) using MegaTran 2.0 (Cat# [TT210002]).