

Product datasheet for RC206125

SPSB3 (NM_080861) Human Tagged ORF Clone

Product data:

Product Type: Expression Plasmids
Product Name: SPSB3 (NM_080861) Human Tagged ORF Clone
Tag: Myc-DDK
Symbol: SPSB3
Synonyms: C16orf31; SSB3
Mammalian Cell Selection: Neomycin
Vector: pCMV6-Entry (PS100001)
E. coli Selection: Kanamycin (25 ug/mL)
ORF Nucleotide Sequence: >RC206125 representing NM_080861
 Red=Cloning site Blue=ORF Green=Tags(s)

TTTTGTAATACGACTCACTATAGGGCGGCCGGAATTCGTCGACTGGATCCGGTACCGAGGAGATCTGCC
 GCC**CGATCGCC**

ATGGCCAGACGCCCGGAACAGCAGGGCCTGGCACTTCGTCCTGAGTGCAGCCCGGAGACGCAGATG
 CCCGGGCGTGGCTCTAGCAGGCTCCACTAACTGGGGCTACGACTCTGATGGGCAGCACAGCGACTCGGA
 CTCGACCCCGAGTACTCCACGCTGCCGCCATCCATCCCAGTGCAGTGGCCGTGACCGGCGAGTCTTC
 TGTGACTGTGCTGGCCAGAGCGAGGCCTCTTCTGTAGCAGCCTGCACTCGGCCACCGGGCAGGGACT
 GCCGCTGCGGAGAGGAAGACGAGTATTTGACTGGGTCTGGGATGACTTAAATAAGTCATCAGCCACCT
 GCTGAGCTGTGACAACCGTAAGGTCAGCTTCCACATGGAGTACAGCTGCGGCACAGCGGCCATCCGGGGC
 ACCAAGGAGCTGGGGGAGGGCCAGCACTTCTGGGAGATCAAGATGACCTCTCCCGTCTACGGCACCGACA
 TGATGGTGGGCATCGGGACGTCGGATGTGGACCTGGACAAATACCGCCACACGTTCTGCAGCCTGTGGG
 CAGGGATGAGGACAGCTGGGGCCTCTCCTACACGGGCCTCCTCCACCACAAGGGCGACAAGACCAGCTTC
 TCGTCGCGGTTTCGGCCAGGGCTCCATCATTGGCGTGCACCTGGACACCTGGCACGGCACACTCACTTTT
 TCAAGAACAGGAAGTGTATAGGTGTGGCAGCCACCAAGCTGCAGAACAAGAGATTCTACCCGATGGTGTG
 CTCCACGGCGGCCCGGAGCAGCATGAAGTCAACCGCTCCTGTGCCAGCGCCACTTCCCTCCAGTACCTG
 TGCTGCCACCGCCTGCGCCAGCTGCGGCCAGACTCGGGAGACAGCTGGAGGGTCTGCCGCTGCCGCGCG
 GCCTCAAGCAGGTGTACACAACAAGCTGGGTGGTCTGAGCATGAGTTGCAGCCCGCAAGGCTCC
 AGTGTCCGATCCCAGGCAGCGACTCCGCCACCACAGCAGTCGCGAGCCTCGGCCCTGCCAGAGGAAG
 CGTCCGCCCGGACC

ACGCGTACGCGGCCGCTCGAGCAGAACTCATCTCAGAAGAGGATCTGGCAGCAATGATATCCTGGATT
 ACAAGGATGACGACGATAAGGTTAA



[View online »](#)

Protein Sequence: >RC206125 representing NM_080861
Red=Cloning site Green=Tags(s)

MARRPRNSRAWHFVLSAARRDADARAVALAGSTNNGYSDSQHSDSDSDPEYSTLPPSIPSAVPVTGESF
 CDCAGQSEASFCSLHSAHRGRDCRCGEDEYFDWVWDDLKSSATLLSCDNRKVSFHMEYSCGTAAIRG
 TKELGEGQHFWEIKMTPVYGTMMVGIIGTSDVDLKYRHTFCSSLGRDEDSWGLSYTGLLHHKGDKTSF
 SSRFGQGSIIIGVHLDTWGHTLTFKNRKCI GVAATKLQNKRFYPMVCSTAAARSSMKVTRSCASATSLQYL
 CCHRLRQLRPDSGDTLEGLPLPPLGKQVHLHNKLGWVLSMSCSRRKAPVSDPQAATSAHSSREPRPCQRK
 RCRRT

TRTRPLEQKLISEEDLAANDILDYKDDDDKV

Chromatograms: https://cdn.origene.com/chromatograms/ja1737_e03.zip

Restriction Sites: SgfI-MluI

Cloning Scheme:



* The last codon before the Stop codon of the ORF

ACCN: NM_080861

ORF Size: 1065 bp

OTI Disclaimer: The molecular sequence of this clone aligns with the gene accession number as a point of reference only. However, individual transcript sequences of the same gene can differ through naturally occurring variations (e.g. polymorphisms), each with its own valid existence. This clone is substantially in agreement with the reference, but a complete review of all prevailing variants is recommended prior to use. [More info](#)

OTI Annotation: This clone was engineered to express the complete ORF with an expression tag. Expression varies depending on the nature of the gene.

Components: The ORF clone is ion-exchange column purified and shipped in a 2D barcoded Matrix tube containing 10ug of transfection-ready, dried plasmid DNA (reconstitute with 100 ul of water).

Reconstitution Method:

1. Centrifuge at 5,000xg for 5min.
2. Carefully open the tube and add 100ul of sterile water to dissolve the DNA.
3. Close the tube and incubate for 10 minutes at room temperature.
4. Briefly vortex the tube and then do a quick spin (less than 5000xg) to concentrate the liquid at the bottom.
5. Store the suspended plasmid at -20°C. The DNA is stable for at least one year from date of shipping when stored at -20°C.

Note: Plasmids are not sterile. For experiments where strict sterility is required, filtration with 0.22um filter is required.

RefSeq: [NM_080861.4](#)

RefSeq Size: 1553 bp

RefSeq ORF: 1068 bp

Locus ID: 90864

UniProt ID: [Q6PJ21](#)

Cytogenetics: 16p13.3

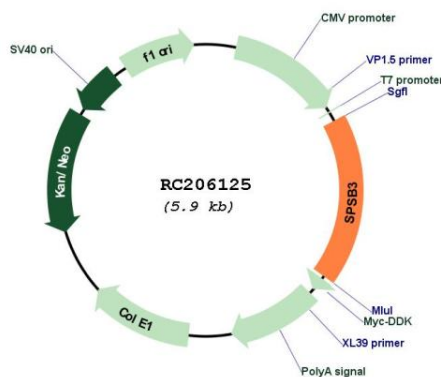
Domains: SPRY

Protein Families: Druggable Genome

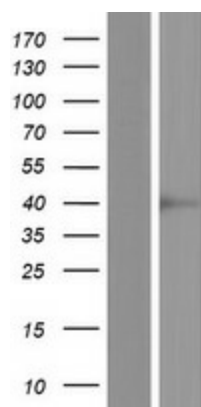
MW: 39.2 kDa

Gene Summary: May be a substrate recognition component of a SCF-like ECS (Elongin BC-CUL2/5-SOCS-box protein) E3 ubiquitin-protein ligase complex which mediates the ubiquitination and subsequent proteasomal degradation of target proteins.[UniProtKB/Swiss-Prot Function]

Product images:



Circular map for RC206125



Western blot validation of overexpression lysate (Cat# [LY409013]) using anti-DDK antibody (Cat# [TA50011-100]). Left: Cell lysates from untransfected HEK293T cells; Right: Cell lysates from HEK293T cells transfected with RC206125 using transfection reagent MegaTran 2.0 (Cat# [TT210002]).