

Product datasheet for RC206121

GOT1L1 (NM_152413) Human Tagged ORF Clone

Product data:

Product Type:	Expression Plasmids
Product Name:	GOT1L1 (NM_152413) Human Tagged ORF Clone
Tag:	Myc-DDK
Symbol:	GOT1L1
Synonyms:	MGC33309
Vector:	pCMV6-Entry (PS100001)
E. coli Selection:	Kanamycin (25 ug/mL)
Cell Selection:	Neomycin
ORF Nucleotide Sequence:	>RC206121 ORF sequence Red=Cloning site Blue=ORF Green=Tags(s)

TTTTGTAATACGACTCACTATAGGGCGCCGGGAATTCGTCGACTGGATCCGGTACCGAGGAGATCTGCC
GCC**CGGATCGCC**

ATGCCACCCTTTCAGTGTTCATGGATGTGCCCTCGCCACAAGCTAGAGGGCAGCTTGTAAAGACCT
ACAACAAGATGATTACCCGAACAAGATATTCTTAGCCTATAGAGTCTGCATGACAAATGAAGGCCATCC
CTGGGTTTCTCTCGTGGTGCAGAAGACTCGACTACAGATTTACAGGATCCCTCCCTGAATTATGAGTAC
TTGCCACCATGGGCCTGAAATCATTATCCAGGCCTCTCTAGCACTCCTCTTGAAAGCACAGCCAAG
CCATTGTGGAGAACAGGGTAGGGGGTGTACACACTGTTGGTGACAGTGGTGCCTTCCAGCTTGGCGTCCA
GTTTCTCAGAGCTTGGCATAAAGGATGCTCGTATAGTTTACATCATCTTCTCAAAAAGAACTGCATGGA
CTCGTCTTCCAGGACATGGGCTTACAGTTTATGAATACTCTGTCTGGGACCCCAAGAAGCTATGCATGG
ACCCCGACATACTCCTCAATGTGGTGGAGCAGATCCCACATGGCTGTGTCTTGTGATGGGGAACATTAT
CGACTGCAAGTTGACACCAAGTGGTGGCAAGTTGATGTCCATGATAAAGAGCAAGCAGATATCCCA
TTTTTTGATATCCCTGTCAAGGTTTATACACCAGTGGCTTGGAGAAGATACTAGAATCTTACAATACT
TTGTGTCTCAAGGCTTTGAGTTCTCTGCAGCCAGTCTGTCCAAGAATTTTGGCATTATGATGAAGG
AGTGGGGATGCTAGTGGTGGCAGTCAACAACCAGCAGCTGCTGTGTCTCTCCAGCTGGAAGGA
TTAGCCCAGGCCCTGTGGCTAAACCCCCCAACACGGGTGCACGTGTCATCACCTCCATCCTCTGCAACC
CTGCTCTGCTGGGAGAATGGAAGCAGAGCTAAAAGAAGTTGTAGAGAACATCATGCTAACCAAGGAAAA
AGTGAAGGAGAACTCCAGCTCCTGGGAACCCCTGGTCTGGGGTACATCACCGAGCAGAGTGGGACC
CACGGCTATCTGGACTCAACTCCAGCAGGTGGAATACCTGGTCAGGAAGAAGCACATCTATATCCCCA
AGAACGGTCAGATTAACCTCAGCTGTATCAATGCCAACACATAAATTACATCACTGAGGGCATCAATGA
GGCTGTCTCCTCACAGAGAGCTCAGAGATGTCTTCCAAGGAAAAAAAAAACTGATTGGAATAAAA
CTT

ACGCGTACGCGGCCGCTCGAGCAGAACTCATCTCAGAAGAGGATCTGGCAGCAAATGATATCCTGGATT
ACAAGGATGACGACGATAAGGTTTAA



[View online »](#)

Protein Sequence: >RC206121 protein sequence
 Red=Cloning site Green=Tags(s)

MPTLSVFMVDVPLAHKLEGLSLKTYKQDDYPNKIFLAYRVCMTNEGHPWVSLVVQKTRLQISQDPSLNEYE
 LPTMGLKSF IQASLALLFGKHSQAIVENRVGGVHTVGD SGAFQLGVQFLRAWHKDARIVYI ISSQKELHG
 LVFQDMGFVVEYSVWDPKKLCMDPDILLNVVEQIPHGCVLVMGNIIDCKLTPSGWAKLMSMIKSKQIFP
 FFDIPCQGLYTSGLEEDTRILQYFVSQGF EFFCSQSLSKNFGIYDEGVGMLVVAVNNQQLLCVLSQLEG
 LAQALWLNPPNTGARVITSILCNPALLGEWKQSLKEVVENIMLTKEKVKELQLLGTGPGSWGHITEQSQT
 HGYLGLNSQQVEYLVRKKHIYIPKNGQINFSCINANNINYITEGINEAVLLTESSEMCLPKEKKTLLIGIK
 L

TRTRPLEQKLISEEDLAANDILDYKDDDDKV

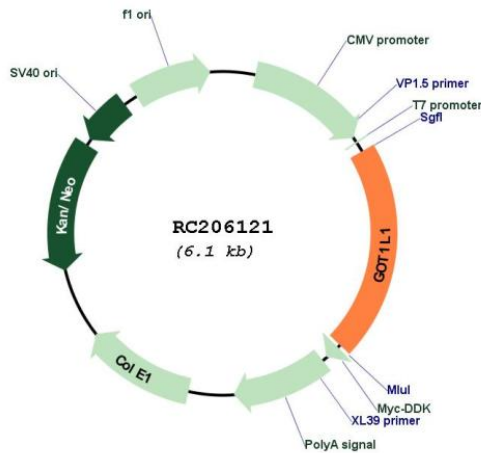
Chromatograms: https://cdn.origene.com/chromatograms/mk6725_c05.zip

Restriction Sites: SgfI-MluI

Cloning Scheme:



Plasmid Map:



ACCN: NM_152413

ORF Size: 1263 bp

OTI Disclaimer: Due to the inherent nature of this plasmid, standard methods to replicate additional amounts of DNA in E. coli are highly likely to result in mutations and/or rearrangements. Therefore, OriGene does not guarantee the capability to replicate this plasmid DNA. Additional amounts of DNA can be purchased from OriGene with batch-specific, full-sequence verification at a reduced cost. Please contact our customer care team at custsupport@origene.com or by calling 301.340.3188 option 3 for pricing and delivery.

The molecular sequence of this clone aligns with the gene accession number as a point of reference only. However, individual transcript sequences of the same gene can differ through naturally occurring variations (e.g. polymorphisms), each with its own valid existence. This clone is substantially in agreement with the reference, but a complete review of all prevailing variants is recommended prior to use. [More info](#)

OTI Annotation: This clone was engineered to express the complete ORF with an expression tag. Expression varies depending on the nature of the gene.

RefSeq: [NM_152413.1](#), [NP_689626.1](#)

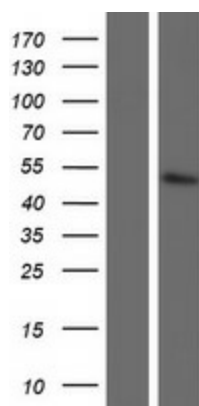
RefSeq Size: 1390 bp

RefSeq ORF: 1266 bp

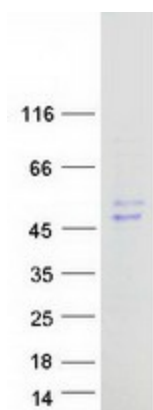
Locus ID: 137362

MW: 47.2 kDa

Product images:



Western blot validation of overexpression lysate (Cat# [LY407581]) using anti-DDK antibody (Cat# [TA50011-100]). Left: Cell lysates from untransfected HEK293T cells; Right: Cell lysates from HEK293T cells transfected with RC206121 using transfection reagent MegaTran 2.0 (Cat# [TT210002]).



Coomassie blue staining of purified GOT1L1 protein (Cat# [TP306121]). The protein was produced from HEK293T cells transfected with GOT1L1 cDNA clone (Cat# RC206121) using MegaTran 2.0 (Cat# [TT210002]).