

## Product datasheet for **RC206118**

### **MFSD8 (NM\_152778) Human Tagged ORF Clone**

#### **Product data:**

Product Type:	Expression Plasmids
Product Name:	MFSD8 (NM_152778) Human Tagged ORF Clone
Tag:	Myc-DDK
Symbol:	MFSD8
Synonyms:	CCMD; CLN7
Vector:	pCMV6-Entry (PS100001)
E. coli Selection:	Kanamycin (25 ug/mL)
Cell Selection:	Neomycin



[View online »](#)

**ORF Nucleotide Sequence:**

>RC206118 ORF sequence  
 Red=Cloning site Blue=ORF Green=Tags(s)

TTTTGTAATACGACTCACTATAGGGCGGCCGGAATTCGTCGACTGGATCCGGTACCGAGGAGATCTGCC  
 GCC**GCGATCGCC**

ATGGCCGGCCTGCGGAACGAAAGTGAACAGGAGCCGCTCTTAGGGCAGACACCTGGAAGCAGAGAATGGG  
 ACATTTTAGAGACTGAAGAGCATTATAAGAGCCGATGGAGATCTATTAGGATTTTATATCTTACTATGTT  
 TCTCAGCAGTGTAGGGTTTTCTGTAGTGTATGTCCATATGGCCATATCTCCAAAAGATTGATCCGACA  
 GCTGATACAAGTTTTTTGGGCTGGGTTATTGCTTCATATAGTCTTGGCCAAATGGTAGCTTCACCTATAT  
 TTGGTTTATGGTCTAATTATAGACCAAGAAAAGAGCCTCTTATTGTCTCCATCTTGATTTCCGTGGCAGC  
 CAACTGCCTCTATGCATATCTCCACATCCAGCTTCTCATAATAAATACTACATGCTGGTTGCTCGTGGA  
 TTGTTGGGAATTGGAGCAGGAAATGTAGCAGTTGTAGATCATATACTGCTGGTGTACTTCCCTCAGG  
 AAAGAACAAGTCCATGGCAAACATAAGCATGTGTCAAGCATTAGGTTTTATTCTAGGTCCAGTTTTTCA  
 GACTTGTTTTACATTCTTGGAGAAAAGGTGTGACATGGGATGTGATTAAGTGCAGATAAACATGTAT  
 ACAACACCAGTTTTACTTAGCGCCTTCTGGGAATTTTAAATATTATTCTGATCCTTGCCATACTAAGAG  
 AACATCGTGTGGATGACTCAGGAAGACAGTGTAAAAGTATTAATTTTGAAGAAGCAAGTACAGATGAAGC  
 TCAGGTTCCCAAGGAAATATTGACCAGTTGCTGTTGTGGCCATCAATGTTCTGTTTTTTGTGACTCTA  
 TTTATCTTTGCCCTTTTTGAAACCATCATTACTCCATTAACAATGGATATGTATGCCTGGACTCAAGAAC  
 AAGCTGTGTTATATAATGGCATAACTTGTCTCTTGGGGTTGAAGCCGTTGTTATTTTCTTAGGAGT  
 TAAGTTGCTTTCCAAAAGATTGGCGAGCGTCTATTCTACTGGGAGGACTCATCGTTGTATGGGTTGGC  
 TTCTTTATCTTGTACCTTGGGAAATCAATTTCCAAAATACAGTGGGAAGATTGCACAATAATTCAA  
 TCCCTAATACCACATTTGGGAAATTTATTGGTCTTTGGAAGTCTCCAATGGAAGATGACAATAATGAAAG  
 ACCAACTGGTTGCTCGATTGAACAAGCCTGGTGCCTCTACACCCGGTGATTCATCTGGCCAGTTCCTT  
 ACATCAGCTGTGCTAATAGGATTAGGCTATCCAGTCTGCAATCTTATGCTCTACTCTATATTCAAAAA  
 TTCTAGGACCAAAACCTCAGGGTGTATACATGGGCTGGTTAACAGCATCTGGAAGTGGAGCCCGATTCT  
 TGGGCCTATGTTTCATCAGCCAAGTGTATGCTCACTGGGGACCACGATGGGCATTACGCTGGTGTGGA  
 ATAATAGTGTCCACATCACCTCCTGGGAGTGGTTACAAAAGACTCATTGCTCTTTCTGTAAGATATG  
 GGAGGATTCAGGAA

**ACGCGT**ACGCGGCCGCTCGAGCAGAAACTCATCTCAGAAGAGGATCTGGCAGCAAATGATATCTGGATT  
 ACAAGGATGACGACGATAAGGTTTAA

**Protein Sequence:**

>RC206118 protein sequence  
 Red=Cloning site Green=Tags(s)

MAGLRNESEQEPLLDGTPGSREWDILETEEHYKSRWRSIRILYLTMFLSSVGFSSVMMMSIWPYLQKIDPT  
 ADTSFLGWVVIASYSLQGMVASPIFGLWSNYRPRKEPLIVSILISVAANCLYAYLHIPASHNKYYMLVARG  
 LLGIGAGNVAVVRSYTAGATSLQERTSSMANISMCQALGFILGPVFQTCFTFLGEKGVTDVVIKLIQINMY  
 TTPVLLSAFLGILNIIILAILREHRVDDSGRQCKSINFEEASTDEAQPQGNIDQVAVVAINVLFVTL  
 FIFALFETIITPLTMDMYAWTQEAVLYNGIILAALGVEAVVIFLGVKLLSKKIGERAILLGGLIVVWVG  
 FFILLPWGNQFPKIQWEDLHNNSIPNTTFGEIIIGLWKSPEDDNERPTGCSIEQAWCLYTPVIHLAQFL  
 TSAVLIGLGYPCNLMSYTLYSKILGPKPQGVYMGWLTASGSGARILGPMFISQVYAHWGPRWAFSLVCG  
 IIVLTITLLGVVYKRLIALSVRYGRIQE

**TR**TRPLEQKLISEEDLAANDILDYKDDDDKV

**Chromatograms:**

[https://cdn.origene.com/chromatograms/mk6320\\_g02.zip](https://cdn.origene.com/chromatograms/mk6320_g02.zip)

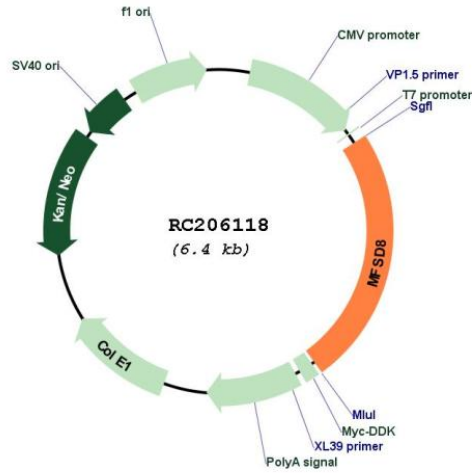
**Restriction Sites:**

SgfI-MluI

Cloning Scheme:



Plasmid Map:

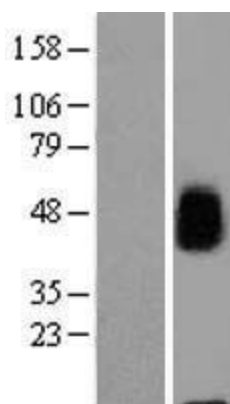


ACCN:

NM\_152778

ORF Size:	1554 bp
OTI Disclaimer:	The molecular sequence of this clone aligns with the gene accession number as a point of reference only. However, individual transcript sequences of the same gene can differ through naturally occurring variations (e.g. polymorphisms), each with its own valid existence. This clone is substantially in agreement with the reference, but a complete review of all prevailing variants is recommended prior to use. <a href="#">More info</a>
OTI Annotation:	This clone was engineered to express the complete ORF with an expression tag. Expression varies depending on the nature of the gene.
RefSeq:	<a href="#">NM_152778.3</a>
RefSeq Size:	4562 bp
RefSeq ORF:	1557 bp
Locus ID:	256471
Domains:	sugar_tr
Protein Families:	Transmembrane
Protein Pathways:	Lysosome
MW:	57.6 kDa
Gene Summary:	This gene encodes a ubiquitous integral membrane protein that contains a transporter domain and a major facilitator superfamily (MFS) domain. Other members of the major facilitator superfamily transport small solutes through chemiosmotic ion gradients. The substrate transported by this protein is unknown. The protein likely localizes to lysosomal membranes. Mutations in this gene are correlated with a variant form of late infantile-onset neuronal ceroid lipofuscinoses (vLINCL). [provided by RefSeq, Oct 2008]

### Product images:



Western blot validation of overexpression lysate (Cat# [LY407271]) using anti-DDK antibody (Cat# [TA50011-100]). Left: Cell lysates from untransfected HEK293T cells; Right: Cell lysates from HEK293T cells transfected with RC206118 using transfection reagent MegaTran 2.0 (Cat# [TT210002]).