

Product datasheet for **RC206115**

CLHC1 (NM_152385) Human Tagged ORF Clone

Product data:

Product Type:	Expression Plasmids
Product Name:	CLHC1 (NM_152385) Human Tagged ORF Clone
Tag:	Myc-DDK
Symbol:	CLHC1
Synonyms:	C2orf63
Mammalian Cell Selection:	Neomycin
Vector:	pCMV6-Entry (PS100001)
E. coli Selection:	Kanamycin (25 ug/mL)



[View online »](#)

ORF Nucleotide Sequence:

>RC206115 ORF sequence
 Red=Cloning site Blue=ORF Green=Tags(s)

TTTTGTAATACGACTCACTATAGGGCGGCCGGAATTCGTCGACTGGATCCGGTACCGAGGAGATCTGCC
 GCC**CGCATCGCC**

ATGTCAGTTCATCAAATAAGAAAACATGCAGTTCTCCACCTATCATTGTAGAAGTGACAAGGAATTTT
 TGGAAAGTGTGCAGAGATACATAATTACAGAACTGAAAGACTGGCTGTAGTGAGGAAGGACCTGCTGA
 TGAATATTACATCATATACCGAAATGTTTTGATAAGGTAATAGAGCATATCACTGCATACAAATCCATT
 CTTACTTCAATCAAAAAAGAATATGATGCCTTTATTGAGACAATAAAGAAAGACCGAAGAAGTACATTTT
 GTCTTCATGGAAAACCTAAAGGTTTGGCAGCAGAGCCTACAGCTTTGGTATATTACAGGAAAAGAACAAT
 CCAACTTGAAGCAAAAATGAGGATTATCGAAAGTAATTCCTCGAAGATTCATCTCAAATAGATCACATC
 AAGCAGTGTAGGGCAGAGTATGACACAAAAGAAGTAAATATTGTACTTTCTCAAAGATCCTTCAAAC
 CTATTCCAGGCATGACTTTCAAGAATCCATGAATCTAGATGCTCTCACTAAATACATGAAACATCTTGA
 AGATAAATATGCAGAAATTAACAAGCTATGTTGATAAAATATGTCCAGCTCAGAGGAAGGCTGATTTA
 GATGAAGAAATGATTGTGTTATTAACCGCGAGATGTAGCTGAAAATCTGAACAAAAAATTGCAGTTTT
 GTCATCAAAGACTGCAGATAATTCACAGGCACCTAGTTCATGGGTAATACTGATATGAGCAGCCATT
 TCAAGACTTTGTGGAGCAAATTCAGAAAACCAATATTTACAAGGTGACCAAGGCATTGTTGAAGAACTA
 ATGGAAGATGATCCACGAGGGCAAAAGAAGCTGAAATATGCTTCACTACATTGAAAGGTTAATGAGT
 TAATCTCACTTGGTGAATATGAAAGGCAGCTTGTATGCAGCAAAACAGTCTAGAAAGATTCTTCGAAA
 CATTGGTACAATGAATACATTTAAGGCTGTTGGAAAAATAGAGGAAAGCCTCTCCATTACTCTTATTT
 TTTGAGGCCCTCTTATCACAAGTCATGCTTTTCCATGTCTGTGATGCAGCTAACCCCTGGAAGGAA
 TCAAATGTGGATTATCAGAAAAACGGTTAGATTTAGTTACCAATTGGGTTACACAGAAAGACTGACAT
 TTCTGAGGAGGCTGGGGATGTGATTTGTGATTATGGGGAGCAGGATACTATAACAAGGCCAAGTGCCTG
 GCTTTAGCTCAGATTATCTACAGTGAATGTGCCCTGCACAAGAAAGCTATTCTTTGCTTGTGTAACAGG
 GTCAGACTCATAGGGTATGAGTACATACAGCAGTTGAAGGACTTTACTACCGATGACCTGTTGCAGCT
 ATTAATGTCATGTCCCAAGTTGAATTAATTCAGTGTCTCACTAAAGAGTTGAATGAGAAACAACCATCT
 TTATCTTTTGGTCTTACTTACTTCTCTGTAGACATGAAAAAGTTGGCATTAAAGCTACTTC
 AAGAAATCAATAAAGGTGGGATAGATGCAGTAGAAAGTCTTATGATAAATGATTCCTTTTGTCCATAGA
 AAAGTGGCAAGAAGTGGCAAATATATGTTACAGAATGGCTTTGACAAATATCTAATGACATCAGTCT
 ATTCTTCGATCTCAGGCTGCAGTTACAGAAATTTCTGAAGAGGATGACGCAGTCAACCTAATGGAACATG
 TGTTTTGG

ACGCGTACGCGGCCGCTCGAGCAGAAACTCATCTCAGAAGAGGATCTGGCAGCAAATGATATCCTGGATT
 ACAAGGATGACGACGATAAGGTTTAA

Protein Sequence:

>RC206115 protein sequence
 Red=Cloning site Green=Tags(s)

MSVHQIRKHAVLPPICRSDFLESVQRYIITETERLGCSEEGPADEYYIIYRNVFDKVEIHITAYKSI
 LTSIKKEYDAFIETIKKDRRTTFLHGKLGKLAEEPTALVYRKRRTIQLEAKMRIIESNSSKIQSQIDHI
 KQCRAEYDTKEVKYCTFSKDPSPKIPGMLQESMNLDALTKYMKHLEDKYAEIKQAMLIKYVPAQRKADL
 DEEMIVLLKRRDVAENLNKKLQFCHQRLQIISQALSSWVKSDMSSPFQDFVEIQKTKYLQGDQGI VEEL
 MEDDPRRAKEAEIMLHYIERFNELISLGEYEKAACYAANSRRILRNIGTMNTFKAVGKIRGKPLPLLLF
 FEALFITSHAFPCPVDAALTLEGIKCGLSEKRLDLVTNWWVTQERLTFSEEAGDVICDYGEQDTYNKAKCL
 ALAQIIYSECGLHKAILCLCKQQTTHRMEYIQQLKDFTTDDLQLLMSCPQVELIQCLTKELNEKQPS
 LSFGLAILHLFSVDMKKYGIKLLQEINKGGIDAVESLMINDSFCSIEKWQEVANICSQNGFDKLSNDITS
 ILRSQAAVTEISEEDDAVNLMEHVFW

TRTRPLEQKLISEEDLAANDILDYKDDDDKV

Chromatograms:

https://cdn.origene.com/chromatograms/mk6320_a02.zip

Restriction Sites: SgfI-MluI

Cloning Scheme:



ACCN: NM_152385

ORF Size: 1758 bp

OTI Disclaimer: The molecular sequence of this clone aligns with the gene accession number as a point of reference only. However, individual transcript sequences of the same gene can differ through naturally occurring variations (e.g. polymorphisms), each with its own valid existence. This clone is substantially in agreement with the reference, but a complete review of all prevailing variants is recommended prior to use. [More info](#)

OTI Annotation: This clone was engineered to express the complete ORF with an expression tag. Expression varies depending on the nature of the gene.

Components: The ORF clone is ion-exchange column purified and shipped in a 2D barcoded Matrix tube containing 10ug of transfection-ready, dried plasmid DNA (reconstitute with 100 ul of water).

- Reconstitution Method:
1. Centrifuge at 5,000xg for 5min.
 2. Carefully open the tube and add 100ul of sterile water to dissolve the DNA.
 3. Close the tube and incubate for 10 minutes at room temperature.
 4. Briefly vortex the tube and then do a quick spin (less than 5000xg) to concentrate the liquid at the bottom.
 5. Store the suspended plasmid at -20°C. The DNA is stable for at least one year from date of shipping when stored at -20°C.

Note: Plasmids are not sterile. For experiments where strict sterility is required, filtration with 0.22um filter is required.

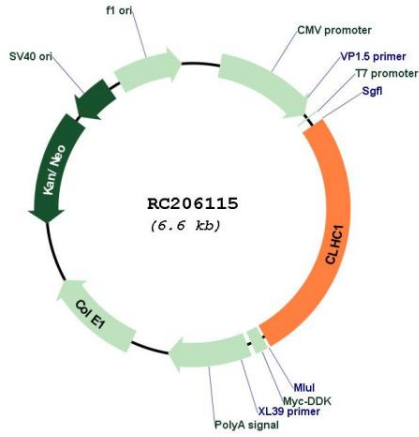
RefSeq: [NM_152385.1](#), [NP_689598.1](#)

RefSeq Size: 5360 bp

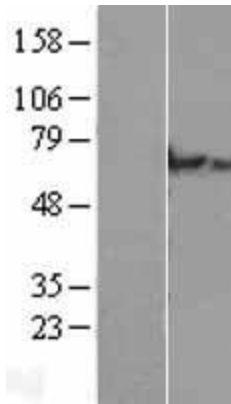
RefSeq ORF: 1761 bp

Locus ID: 130162
UniProt ID: [Q8NHS4](#)
Cytogenetics: 2p16.1
MW: 67.3 kDa

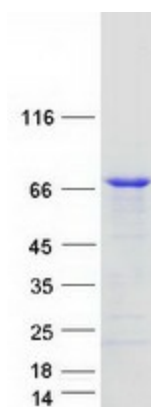
Product images:



Circular map for RC206115



Western blot validation of overexpression lysate (Cat# [LY407553]) using anti-DDK antibody (Cat# [TA50011-100]). Left: Cell lysates from untransfected HEK293T cells; Right: Cell lysates from HEK293T cells transfected with RC206115 using transfection reagent MegaTran 2.0 (Cat# [TT210002]).



Coomassie blue staining of purified CLHC1 protein (Cat# [TP306115]). The protein was produced from HEK293T cells transfected with CLHC1 cDNA clone (Cat# RC206115) using MegaTran 2.0 (Cat# [TT210002]).