

## Product datasheet for **RC206114**

### ASF1B (NM\_018154) Human Tagged ORF Clone

#### Product data:

Product Type: Expression Plasmids

Tag: Myc-DDK

Symbol: ASF1B

Synonyms: CIA-II

Mammalian Cell Selection: Neomycin

Vector: pCMV6-Entry (PS100001)

E. coli Selection: Kanamycin (25 ug/mL)

ORF Nucleotide Sequence: >RC206114 ORF sequence  
 Red=Cloning site Blue=ORF Green=Tags(s)

TTTTGTAATACGACTCACTATAGGGCGGCCGGAATTCGTCGACTGGATCCGGTACCGAGGAGATCTGCC  
 GCC**CGATCGCC**

ATGGCCAAGGTGTCGGTGCTGAACGTGGCGGTCTGGAGAAGCCGAGCCCTTTCCACAGCCCTTCCGGT  
 TCGAGATCAGCTTCGAGTGCAGTGAAGCCCTGGCGGACGACCTGGAGTGAAGATCATTTATGTTGGCTC  
 GGCTGAGAGTGAGGAATTTGATCAGATCCTAGACTCGGTGCTGGTGGGCCCTGTGCCAGCAGGGAGACAC  
 ATGTTTGTCTTTAGGCCGACGCCCCAACCCATCCCTCATCCCAGAGACTGATGCCGTGGGTGTGACTG  
 TGGTCTCATCACCTGCACCTACCATGGACAGGAGTTTCATCCGAGTGGGCTACTACGTCAACAACGAGTA  
 CCTCAACCCCTGAGCTGCGTGAGAAGCCGCCCATGAAGCCAGATTTCTCCAGCTCCAGCGGAACATCTTG  
 GCCTCGAAGCCCGGGTGACCCGCTTCCATATCAACTGGGACAACAACATGGACAGGCTGGAGGCCATAG  
 AGACCCAGGACCCCTCCCTGGGCTGCGGCCTCCCACTCAACTGCACTCCTATCAAGGGCTTGGGGCTCCC  
 TGGCTGCATCCCTGGCCTCCTCCTGAGAACTCCATGGACTGCATC

**ACGCGT**ACGCGGCCGCTCGAGCAGAACTCATCTCAGAAGAGGATCTGGCAGCAAATGATATCCTGGATT  
 ACAAGGATGACGACGATAAGGTTTAA

Protein Sequence: >RC206114 protein sequence  
 Red=Cloning site Green=Tags(s)

MAKVSVLNVAVLENPSPFHSPFRFEISFECSEALADDLEWKIIYVGSASEEFDQILDSVLVGPVPAGRH  
 MFVFQADAPNPSPETDAVGTVVLIITCTYHGQEFIRVGYYVNNYLNPELRENPPMKPDFSQLQRNII  
 ASNPRVTRFHINWDNNMDRLEAIETQDPSLGCGLPLNCTPIKGLGLPGCIPGLLPENSMDCI

**TR**TRPLEQKLISEEDLAANDILDYKDDDDKV

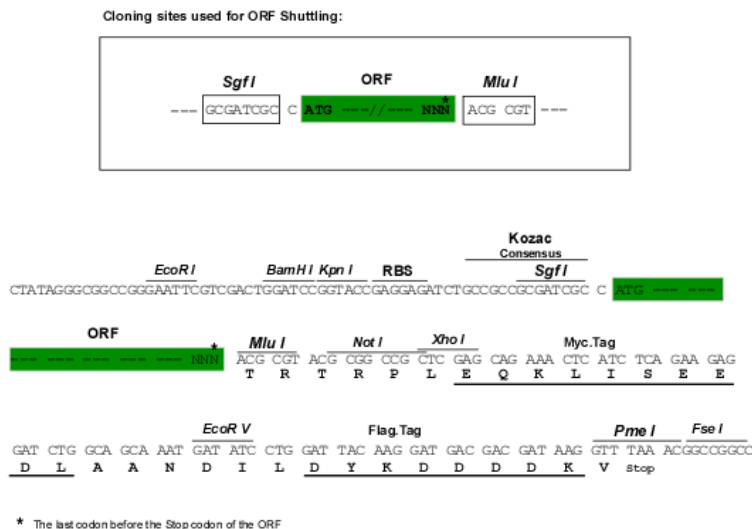
Chromatograms: [https://cdn.origene.com/chromatograms/mk6074\\_b03.zip](https://cdn.origene.com/chromatograms/mk6074_b03.zip)



[View online »](#)

**Restriction Sites:** SgfI-MluI

**Cloning Scheme:**



**ACCN:** NM\_018154

**ORF Size:** 606 bp

**OTI Disclaimer:** The molecular sequence of this clone aligns with the gene accession number as a point of reference only. However, individual transcript sequences of the same gene can differ through naturally occurring variations (e.g. polymorphisms), each with its own valid existence. This clone is substantially in agreement with the reference, but a complete review of all prevailing variants is recommended prior to use. [More info](#)

**OTI Annotation:** This clone was engineered to express the complete ORF with an expression tag. Expression varies depending on the nature of the gene.

**Components:** The ORF clone is ion-exchange column purified and shipped in a 2D barcoded Matrix tube containing 10ug of transfection-ready, dried plasmid DNA (reconstitute with 100 ul of water).

**Reconstitution Method:**

1. Centrifuge at 5,000xg for 5min.
2. Carefully open the tube and add 100ul of sterile water to dissolve the DNA.
3. Close the tube and incubate for 10 minutes at room temperature.
4. Briefly vortex the tube and then do a quick spin (less than 5000xg) to concentrate the liquid at the bottom.
5. Store the suspended plasmid at -20°C. The DNA is stable for at least one year from date of shipping when stored at -20°C.

**Note:** Plasmids are not sterile. For experiments where strict sterility is required, filtration with 0.22um filter is required.

**RefSeq:** [NM\\_018154.3](#)

**RefSeq Size:** 1746 bp

**RefSeq ORF:** 609 bp

**Locus ID:** 55723

**UniProt ID:** [Q9NVP2](#)

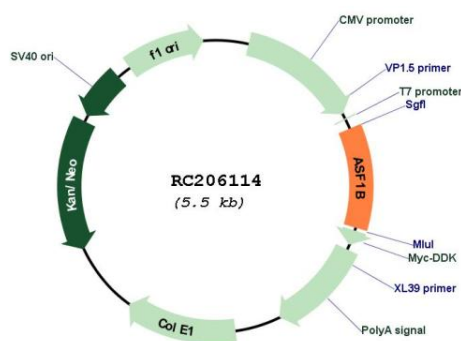
**Cytogenetics:** 19p13.12

**Domains:** Anti-silence

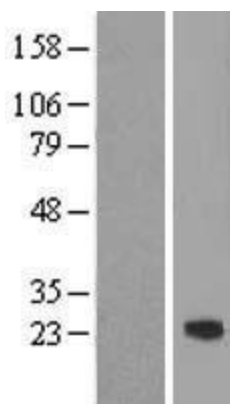
**MW:** 22.4 kDa

**Gene Summary:** This gene encodes a member of the H3/H4 family of histone chaperone proteins and is similar to the anti-silencing function-1 gene in yeast. The encoded protein is the substrate of the tousel-like kinase family of cell cycle-regulated kinases, and may play a key role in modulating the nucleosome structure of chromatin by ensuring a constant supply of histones at sites of nucleosome assembly. [provided by RefSeq, Jul 2008]

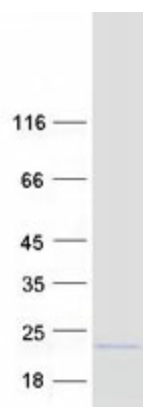
## Product images:



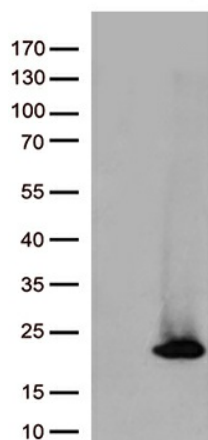
Circular map for RC206114



Western blot validation of overexpression lysate (Cat# [LY413253]) using anti-DDK antibody (Cat# [TA50011-100]). Left: Cell lysates from untransfected HEK293T cells; Right: Cell lysates from HEK293T cells transfected with RC206114 using transfection reagent MegaTran 2.0 (Cat# [TT210002]).



Coomassie blue staining of purified ASF1B protein (Cat# [TP306114]). The protein was produced from HEK293T cells transfected with ASF1B cDNA clone (Cat# RC206114) using MegaTran 2.0 (Cat# [TT210002]).



HEK293T cells were transfected with the pCMV6-ENTRY control (Cat# [PS100001], Left lane) or pCMV6-ENTRY ASF1B (Cat# RC206114, Right lane) cDNA for 48 hrs and lysed. Equivalent amounts of cell lysates (5 ug per lane) were separated by SDS-PAGE and immunoblotted with anti-ASF1B (Cat# [TA813137])(1:500).