

Product datasheet for RC206112

PLPP6 (NM_203453) Human Tagged ORF Clone

Product data:

Product Type:	Expression Plasmids
Product Name:	PLPP6 (NM_203453) Human Tagged ORF Clone
Tag:	Myc-DDK
Symbol:	PLPP6
Synonyms:	bA6J24.6; PDP1; PPAPDC2; PSDP
Mammalian Cell Selection:	Neomycin
Vector:	pCMV6-Entry (PS100001)
E. coli Selection:	Kanamycin (25 ug/mL)
ORF Nucleotide Sequence:	>RC206112 ORF sequence Red=Cloning site Blue=ORF Green=Tags(s)

TTTTGTAATACGACTCACTATAGGGCGGCCGGAATTCGTCGACTGGATCCGGTACCGAGGAGATCTGCC
GCC**CGATCGCC**

ATGCCAAGTCCCCGGAGGAGCATGGAGGGACGGCCGCTGGGCGTCTCCGCTTCGAGCAGCAGCAGCAGCC
CCGGCAGCCAGCCCATGGCGGCGGTGGCGGGCAGCAGGTTTGGATTCCAGTCCCTGCTCAGCAGCCG
CGCCACGGCCGTGGACCCACCTGCGCCCGCTCCGTGCATCGGAGAGCCAGTTCACCGCCGGGCTCC
TCCCCCTGGCCGCGGGCCCTCGCAGTCGCCCGCCTCCGCTGCCGAGGAGGACCGCATGGACT
TGAACCCGTCCTTCTGGGCATCGCCCTGCGCTCCCTGCTGGCCATCGACCTGTGGCTGTCCAAGAAGCT
GGGGTGTGCGCGGAGAGAGCTCGTCTGGGGCAGCGTGCGACCCCTTATGAAGCTGCTGGAGATCTGG
GGACACGGCATCCCTGGCTGCTGGGCACCCTCTACTGCCTGTGACGAGCGACAGCTGGCCGGGCGCG
AGGTGCTGATGAACCTGCTCTTCGCCCTGCTGTTGGACCTGCTGCTGGTGGCCTTGATCAAGGGCTGGT
CCGACGGCGCCCGCCGCCCCACAACCAGATGGACATGTTTGTCACTCTCTCGGTGGACAAGTACTCCTTC
CCCTCGGGCCATGCCACAAGGGCCGCCCTGATGTCGAGGTTATCCTGAACCACTGGTGTGGCCATTC
CACTGAGGGTGTGGTGGTTCTGTGGCCTTCGCTTTGGCCTATCCAGGGTCATGCTGGGGCGGCACAA
TGTCACCGACGTAGCTTTTGGCTTTTTTCTGGGCTACATGCAGTACAGCATCGTGGACTATTGCTGGCTC
TACCCCATATGCTCCGGTCCCTTTTTACTGTGGAGTCAACGA

ACGCGTACGCGGGCCGCTCGAGCAGAAACTCATCTCAGAAGAGGATCTGGCAGCAAATGATATCCTGGATT
ACAAGGATGACGACGATAAGGTTTAA



[View online »](#)

Protein Sequence: >RC206112 protein sequence
Red=Cloning site Green=Tags(s)

MPSPRRSMEGRPLGVSASSSSSSPGSPAHHGGGGGSRFEFQSLSSSRATAVDPTCARLRASESPVHRRGS
 FPLAAAGPSQSPAPPLPEEDRMDLNPSFLGIALRSLAIDLWLSKKGVCAGESSWGSVRPLMKLLEIW
 GHGIPWLLGTLYCLCRSDSWAGREVLNLLFALLDLLLVALIKGLVRRRRPAHNQMDMFTLSVDKYSF
 PSGHATRAALMSRFILNHLVLAIPLRVLVVLWAFVLGLSRVMLGRHNVTDAVGFFLGYMQYSIVDYCWL
 SPHNAPVLFLLWSQR

TRTRPLEQKLISEEDLAANDILDYKDDDDKV

Chromatograms: https://cdn.origene.com/chromatograms/mk6073_d10.zip

Restriction Sites: SgfI-MluI

Cloning Scheme:

Cloning sites used for ORF Shuttling:



* The last codon before the Stop codon of the ORF

ACCN: NM_203453

ORF Size: 885 bp

OTI Disclaimer: The molecular sequence of this clone aligns with the gene accession number as a point of reference only. However, individual transcript sequences of the same gene can differ through naturally occurring variations (e.g. polymorphisms), each with its own valid existence. This clone is substantially in agreement with the reference, but a complete review of all prevailing variants is recommended prior to use. [More info](#)

OTI Annotation: This clone was engineered to express the complete ORF with an expression tag. Expression varies depending on the nature of the gene.

Components: The ORF clone is ion-exchange column purified and shipped in a 2D barcoded Matrix tube containing 10ug of transfection-ready, dried plasmid DNA (reconstitute with 100 ul of water).

Reconstitution Method:

1. Centrifuge at 5,000xg for 5min.
2. Carefully open the tube and add 100ul of sterile water to dissolve the DNA.
3. Close the tube and incubate for 10 minutes at room temperature.
4. Briefly vortex the tube and then do a quick spin (less than 5000xg) to concentrate the liquid at the bottom.
5. Store the suspended plasmid at -20°C. The DNA is stable for at least one year from date of shipping when stored at -20°C.

Note: Plasmids are not sterile. For experiments where strict sterility is required, filtration with 0.22um filter is required.

RefSeq: [NM_203453.1](#)

RefSeq Size: 2981 bp

RefSeq ORF: 888 bp

Locus ID: 403313

UniProt ID: [Q8IY26](#)

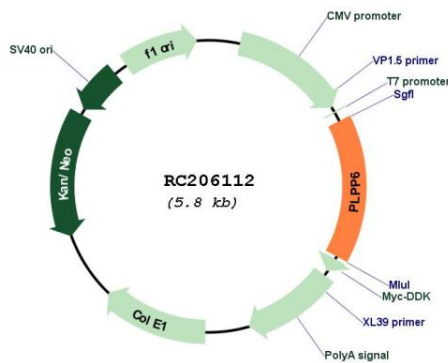
Cytogenetics: 9p24.1

Protein Families: Transmembrane

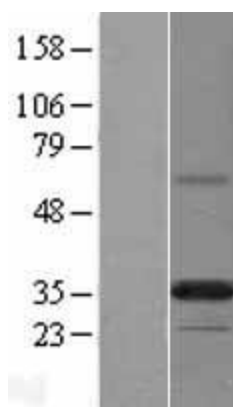
MW: 32.3 kDa

Gene Summary: Phosphatase that dephosphorylates presqualene diphosphate (PSDP) into presqualene monophosphate (PSMP), suggesting that it may be indirectly involved in innate immunity. PSDP is a bioactive lipid that rapidly remodels to presqualene monophosphate PSMP upon cell activation. Displays diphosphate phosphatase activity with a substrate preference for PSDP > FDP > phosphatidic acid.[UniProtKB/Swiss-Prot Function]

Product images:



Circular map for RC206112



Western blot validation of overexpression lysate (Cat# [LY403715]) using anti-DDK antibody (Cat# [TA50011-100]). Left: Cell lysates from untransfected HEK293T cells; Right: Cell lysates from HEK293T cells transfected with RC206112 using transfection reagent MegaTran 2.0 (Cat# [TT210002]).