

Product datasheet for RC206111

C6orf81 (ARMC12) (NM_145028) Human Tagged ORF Clone

Product data:

Product Type:	Expression Plasmids
Product Name:	C6orf81 (ARMC12) (NM_145028) Human Tagged ORF Clone
Tag:	Myc-DDK
Symbol:	C6orf81
Synonyms:	C6orf81
Mammalian Cell Selection:	Neomycin
Vector:	pCMV6-Entry (PS100001)
E. coli Selection:	Kanamycin (25 ug/mL)
ORF Nucleotide Sequence:	>RC206111 ORF sequence Red=Cloning site Blue=ORF Green=Tags(s)

TTTTGTAATACGACTCACTATAGGGCGGCCGGAATTCGTCGACTGGATCCGGTACCGAGGAGATCTGCC
GCC**CGATCGCC**

ATGGGCAAGAGCATCCCCAATACCTGGGGCAACTGGACATCCGCAAAGCGTAGTCAGCCTGGCCACAG
GCGCCGGGGCGATCTACCTGCTCTACAAGGCCATCAAGGCTGGCATAAAATGCAAACCACCCCTCTGTAG
CAACTCACCCATCTGCATCGCCCGTGAGTGTCCGGGCCCTGGGGAGAGGGCTCTGCCCCAGGAGGCACCT
GCTCCCGAGGCCCTCTGCTGTGGAGGGCCCAAAGGCTGGCAGTCGAGCGAGAGCGGCACGGCGGGGACT
CAGGTGAGCTCCGAGGCTCCTCAACTCTTGGAGTGCAAACAGGATGAGTACGCCAAGAGCATGATCCT
GCACAGTATCACTCGCTGTGTACTTGTGGAGGCTGAGGCCTCTGCTTGTACTACGGATGACATCGTG
TTGCTGGGCTACATGCTGGATGACAAGGACAACAGTGTCAAACCCAAAGCTCTGAATACACTTAAAGCTT
TCTCTGGCATCAGAAAATTCAGGCTCAAATCCAGGAACACTCCATCAAAGTACTCGAACTGATCTCCAC
CATCTGGGACACGGAAGTGCACATTGCGGGCCTCAGACTCCTCAACAACCTTCCACTGCCCGACTATGTG
CATCCACAGCTGCGACGGGTGATGCCTGCCTTGATGGAGATCCTGCAGTCAGACTACATCCTAGCACAGG
TGCAAGCCGTACGACTGCTGAGCTACCTGGCACAGAAGAATGACCTTCTCTATGACATTCTCAACTGCCA
GGTTCACTCCAACCTTCTAAACCTGTTCCAGCCACACAGTCAGGGAGTCTCCTGTATGAGTACTGGTG
TTTGCTGAGCGGCTGAGTGAGGGCCGGAACGCACCCCACTACCAGTGGTAAAATGGCATTACAACGAAC
AGTCCCTGCATGAATCCCTCTTTGGGGAAGAGTCCCAGACTGGCAGACCGACTACTTGCCTGGTCAATCCA
CCCTGAGGAAGATGTTCCAGATCCAGGCCTGCAAGGTCATTGTGTCAGCCTGCAGTATCCCCAGGACTTGAGA
GCCCGGCCCTCCTCTGCCAGCCAGTCGTTCTACTTTAAAAACACGGAA

ACGCGTACGCGGCCGCTCGAGCAGAAACTCATCTCAGAAGAGGATCTGGCAGCAAATGATATCCTGGATT
ACAAGGATGACGACGATAAGGTTTAA



[View online »](#)

Protein Sequence: >RC206111 protein sequence
Red=Cloning site Green=Tags(s)

MGKSIPQYLGLDIRKSVVSLATGAGAIYLLYKAIKAGIKCKPPLCSNSPICIARECPGGERALPQEAP
 APEASAVGGPKGLAVERERHGRDSGELRRLNLSLECKQDEYAKSMILHSITRCVYLLEAEASACTDDIV
 LLGYMLDDKDNSVKTQALNTLKAFSGIRKFRLLKIQEHSIKVLELISTIWDTELHIAGLRLLNNLPLPDYV
 HPQLRRVMPALMEILQSDYILAQVQAVRLLSYLAQKNDLLYDILNCQVHSNLFNLFPQTQSGSLLYEVLV
 FAERLSEGRNAPHYHVVKWHYNEQSLHESLFGEE SRLADRL LALVIHP EEDVQIQACKVIVSLQYPQDLR
 ARPSSCQPSRSYFKNTE

TRTRPLEQKLISEEDLAANDILDYKDDDDKV

Chromatograms: https://cdn.origene.com/chromatograms/mk6319_f12.zip

Restriction Sites: SgfI-MluI

Cloning Scheme:



ACCN: NM_145028

ORF Size: 1101 bp

OTI Disclaimer: The molecular sequence of this clone aligns with the gene accession number as a point of reference only. However, individual transcript sequences of the same gene can differ through naturally occurring variations (e.g. polymorphisms), each with its own valid existence. This clone is substantially in agreement with the reference, but a complete review of all prevailing variants is recommended prior to use. [More info](#)

OTI Annotation: This clone was engineered to express the complete ORF with an expression tag. Expression varies depending on the nature of the gene.

Components: The ORF clone is ion-exchange column purified and shipped in a 2D barcoded Matrix tube containing 10ug of transfection-ready, dried plasmid DNA (reconstitute with 100 ul of water).

- Reconstitution Method:**
1. Centrifuge at 5,000xg for 5min.
 2. Carefully open the tube and add 100ul of sterile water to dissolve the DNA.
 3. Close the tube and incubate for 10 minutes at room temperature.
 4. Briefly vortex the tube and then do a quick spin (less than 5000xg) to concentrate the liquid at the bottom.
 5. Store the suspended plasmid at -20°C. The DNA is stable for at least one year from date of shipping when stored at -20°C.

Note: Plasmids are not sterile. For experiments where strict sterility is required, filtration with 0.22um filter is required.

RefSeq: [NM_145028.3](#), [NP_659465.2](#)

RefSeq Size: 1231 bp

RefSeq ORF: 1104 bp

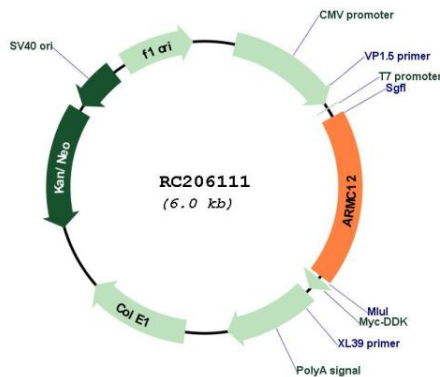
Locus ID: 221481

UniProt ID: [Q5T9G4](#)

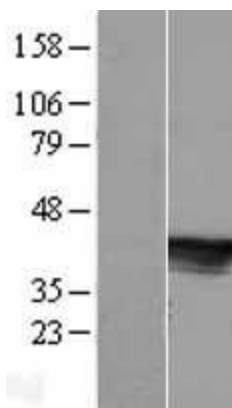
Cytogenetics: 6p21.31

MW: 41.2 kDa

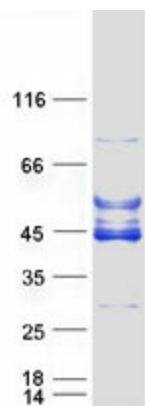
Product images:



Circular map for RC206111



Western blot validation of overexpression lysate (Cat# [LY408089]) using anti-DDK antibody (Cat# [TA50011-100]). Left: Cell lysates from untransfected HEK293T cells; Right: Cell lysates from HEK293T cells transfected with RC206111 using transfection reagent MegaTran 2.0 (Cat# [TT210002]).



Coomassie blue staining of purified ARMC12 protein (Cat# [TP306111]). The protein was produced from HEK293T cells transfected with ARMC12 cDNA clone (Cat# RC206111) using MegaTran 2.0 (Cat# [TT210002]).