

Product datasheet for **RC206104**

RASSF8 (NM_007211) Human Tagged ORF Clone

Product data:

Product Type:	Expression Plasmids
Product Name:	RASSF8 (NM_007211) Human Tagged ORF Clone
Tag:	Myc-DDK
Symbol:	RASSF8
Synonyms:	C12orf2; HOJ1
Mammalian Cell Selection:	Neomycin
Vector:	pCMV6-Entry (PS100001)
E. coli Selection:	Kanamycin (25 ug/mL)
ORF Nucleotide Sequence:	>RC206104 ORF sequence Red=Cloning site Blue=ORF Green=Tags(s)

TTTTGTAATACGACTCACTATAGGGCGGCCGGAATTCGTCGACTGGATCCGGTACCGAGGAGATCTGCC
GCC**CGATCGCC**

ATGGAACCTAAAGTATGGGTGGATGGAGTTCAGAGGATTGTTTGTGGAGTCACTGAAGTCACAACCTTGCC
AGGAGGTTGTATAGCCTTAGCTCAAGCAATAGGTGCAACTGGAAGGTACACCCTTATAGAGAAATGGAG
AGATACTGAAAGACACTTAGCACCTCATGAAAATCCTATCATATCCTTAAACAAATGGGGCAGTATGCT
AGTGATGTGCAGCTCATTCTACGACGAAGTGGCCGCTCTCTCAGTGAGCGACCCACTTCAGACAGTGTGG
CTCGAATTCCTGAAAGAAGTTTATACAGGCAGAGTCTGCCCCCTTAGCTAAACTGAGGCCTCAGATTGA
CAAATCAATCAAAAGGAGGGAACCGAAAAGGAAATCACTGACATTTACAGGAGGTGCCAAAGGATTAATG
GACATTTTTGGAAAAGGTAAGAAAAGTGAAGTAAAGCAAAAGGTGCTGAATAACTGCAAAAACAACAGCAG
ATGAGTTGAAGAAGCTAATCCGTCTGCAGACAGAGAAGCTTCAATCCATTGAGAAACAGCTGGAATCTAA
TGAAATAGAAAAGATTTTGGGAGCAAAAGTATAATTCCAACCTTGAAGAGGAAATGTCCGTCTAGAG
CAAAAGATCAAAAGAACGATGTAGAAATTGAGGAGGAAGAAATCTGGGAAAATGAATTACAGATTGAAC
AGGAAAATGAAAACAGCTGAAGGATCAACTTCAAGAAAATAGACAGAAAATAACAGAATGTGAAAACAA
ATTAAGGACTATTTGGCACAGATCCGGACTATGGAAAGTGGTCTTGAAGCAGAAAATTTGCAACGGGAA
GTTCAAGAGGCACAGGTCAATGAGGAAGAGGTTAAGGAAAGTCTGGTAAGGTCAAAGGGGAGATTGACA
TTCAAGGCCAGCAGAGTCTGAGGTTGGAAAATGGCATCAAAGCTGTGAAAAGATCTCTGGACAAGCCAC
CAAACGCTTACAGGACAAAGAACAGGAAGTGGAGCAGTTGACTAAGGAGTTGCGGCAAGTCAATCTCCAG
CAGTTTATCCAGCAGACAGGGACAAAAGTTACCGTTTTGCGCAGCGGAGCCATTGAAATAGAGGCCTCAC
ATGCAGACATTGAAAGGGGGATCATCATTCTTTCTGATAAGCAGGAGTGTAAAGAT

ACGCGTACGCGGCCGCTCGAGCAGAAACTCATCTCAGAAGAGGATCTGGCAGCAATGATATCCTGGATT
ACAAGGATGACGACGATAAGGTTTAA



[View online >](#)

Reconstitution Method:

1. Centrifuge at 5,000xg for 5min.
2. Carefully open the tube and add 100ul of sterile water to dissolve the DNA.
3. Close the tube and incubate for 10 minutes at room temperature.
4. Briefly vortex the tube and then do a quick spin (less than 5000xg) to concentrate the liquid at the bottom.
5. Store the suspended plasmid at -20°C. The DNA is stable for at least one year from date of shipping when stored at -20°C.

RefSeq: [NM_007211.5](#)

RefSeq Size: 2333 bp

RefSeq ORF: 1179 bp

Locus ID: 11228

UniProt ID: [Q8NHQ8](#)

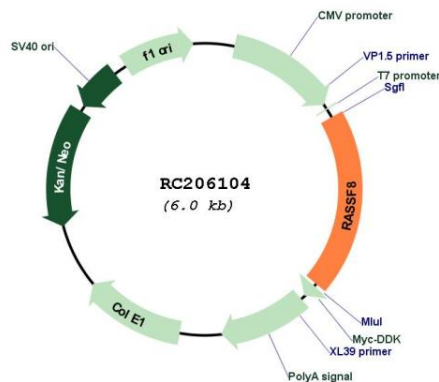
Cytogenetics: 12p12.1

Domains: RA

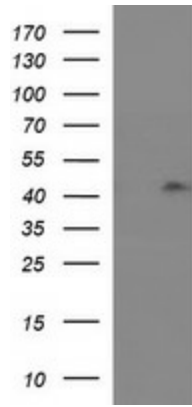
MW: 45.4 kDa

Gene Summary: This gene encodes a member of the Ras-association domain family (RASSF) of tumor suppressor proteins. This gene is essential for maintaining adherens junction function in epithelial cells and has a role in epithelial cell migration. It is a lung tumor suppressor gene candidate. A chromosomal translocation t(12;22)(p11.2;q13.3) leading to the fusion of this gene and the FBLN1 gene is found in a complex type of synpolydactyly. Multiple alternatively spliced transcript variants encoding different isoforms have been found for this gene. [provided by RefSeq, May 2011]

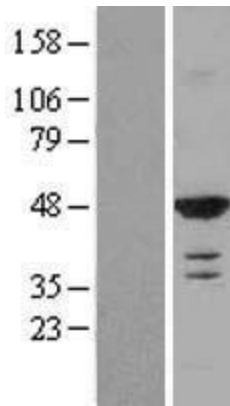
Product images:



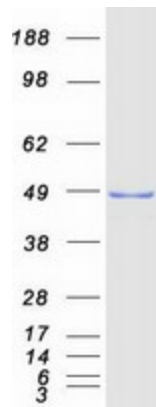
Circular map for RC206104



HEK293T cells were transfected with the pCMV6-ENTRY control (Cat# [PS100001], Left lane) or pCMV6-ENTRY RASSF8 (Cat# RC206104, Right lane) cDNA for 48 hrs and lysed. Equivalent amounts of cell lysates (5 ug per lane) were separated by SDS-PAGE and immunoblotted with anti-RASSF8(Cat# [TA505924]). Positive lysates [LY402108] (100ug) and [LC402108] (20ug) can be purchased separately from OriGene.



Western blot validation of overexpression lysate (Cat# [LY402108]) using anti-DDK antibody (Cat# [TA50011-100]). Left: Cell lysates from untransfected HEK293T cells; Right: Cell lysates from HEK293T cells transfected with RC206104 using transfection reagent MegaTran 2.0 (Cat# [TT210002]).



Coomassie blue staining of purified RASSF8 protein (Cat# [TP306104]). The protein was produced from HEK293T cells transfected with RASSF8 cDNA clone (Cat# RC206104) using MegaTran 2.0 (Cat# [TT210002]).