

## Product datasheet for **RC206102**

### SLC46A3 (NM\_181785) Human Tagged ORF Clone

#### Product data:

Product Type:	Expression Plasmids
Product Name:	SLC46A3 (NM_181785) Human Tagged ORF Clone
Tag:	Myc-DDK
Symbol:	SLC46A3
Synonyms:	FKSG16
Mammalian Cell Selection:	Neomycin
Vector:	pCMV6-Entry (PS100001)
E. coli Selection:	Kanamycin (25 ug/mL)



[View online »](#)

**ORF Nucleotide Sequence:**

>RC206102 ORF sequence  
 Red=Cloning site Blue=ORF Green=Tags(s)

TTTTGTAATACGACTCACTATAGGGCGGCCGGAATTCGTCGACTGGATCCGGTACCGAGGAGATCTGCC  
 GCC**CGCATCGCC**

ATGAAGATTTTATTTGTAGAACCTGCCATTTTCCTTAGTGCATTTGCTATGACTTTGACCGTCCACTGA  
 CAACGCAATATGTTTATCGGAGAATATGGGAAGAACTGGCAACTACACTTTTTTCATCTGATAGCAATAT  
 TTCTGAGTGTGAAAAAACAAGCAGCCCAATTTTGCATTCCAGGAGGAAGTTCAGAAAAAGTGCA  
 CGTTTTAATCTGCAGATGGACATAAGTGGATTAATTCCTGGTCTAGTGTCTACATTCATACTTTTGTCTA  
 TTAGTGATCACTACGGACGAAAATTCCTATGATTTTGTCTTCCGTTGGTGTCTTGCAACCAGCGTTTG  
 GCTCTGTTGCTTTGCTATTTTGCCTTCCATTCCAGCTTTTGATTGCATCTACCTTCATTGGTGCATTT  
 TGTGGCAATTATACCACATTTTGGGAGCTTGCTTTGCCTATATAGTTGATCAGTTTAAAGAACACAAAC  
 AAAAAACAATTCGAATAGCTATCATTGACTTTCTACTTGGACTTGTACTGGACTAACAGGACTGTCATC  
 TGCTATTTTATTAGAGAGCTAGGTTTTGAGTGGTCGTTTCTAATTATTGCTGTGTCTCTTGCTGTTAAT  
 TTGATCTATATTTATTTTTTCTCGGAGATCCAGTGAAAGAGTGTTCATCTCAGAATGTTACTATGTCAT  
 GTAGTGAAGGCTTCAAAAACCTATTTTACCGAACTTACATGCTTTTTAAGAATGCTTCTGGTAAGAGACG  
 ATTTTTGCTCTGTTTGTACTTTTTACAGTAATCACTATTTTTTTGTGGTAATTGGCATTGCCCAATT  
 TTTATCCTTTATGAATTGGATTCACCACTCTGCTGGAATGAAGTTTTTATAGGTTATGGATCAGCTTTGG  
 GTAGTGCCTCTTTTTGACTAGTTTCTAGGAATATGGCTTTTTTCTTATTGTATGGAAGATTTTCATAT  
 GGCCTTCATTGGGATTTTACCACGATGACAGGAATGGCTATGACCGCGTTTGCCAGTACAACACTGATG  
 ATGTTTTTAGCCAGGGTCCGTTCTTTTCACTATTGTCCATTCTGTCTACGGTCCATGTTGTCAA  
 AAGTGGTTCGTTTCGACTGAACAAGTACCCTGTTGCTTGTATTGCTTTCTTGAACACTTGGAGGAGT  
 CACTGCAGTTTCTACTTTTAAATGGAATTTACTCAGCCACTGTTGCTTGGTACCCTGGCTTCACTTTCCTG  
 CTGCTGCTGGTCTGTTACTACTTCCAGCCATCAGTCTATGTGTTGTCAAGTGTACCAGCTGGAATGAGG  
 GAAGCTATGAAGTCTTATACAAGAAGAATCCAGTGAAGATGCTTCAGACAGG

**ACGCGT**ACGCGGCCGCTCGAGCAGAACTCATCTCAGAAGAGGATCTGGCAGCAATGATATCCTGGATT  
 ACAAGGATGACGACGATAAGGTTTAA

**Protein Sequence:**

>RC206102 protein sequence  
 Red=Cloning site Green=Tags(s)

MKILFVEPAIFLSAFAMTLTGPLTTQYVYRRIWEETGNYTFSSDSNISECEKNKSSPIFAFQEEVQKKVS  
 RFNLQMDISGLIPGLVSTFILLISDHYGRKFPMLSSVGLATSVWLCCLCYFAFPFQLLIASFTIGAF  
 CGNYTTFWGACFAYIVDQFKEHKQKTIRIAIIDFLLGLVTGLTGLSSGYFIRELGFWSFLIIAVSLAVN  
 LIYILFFLGDPVKECSSQNVMSCEGFKNLFYRTYMLFKNASGKRRFLLCLLFTVITYFFVVIIGIAPI  
 FLYELDSPLCWNEVF IGYGSALGSASFLTSFLGIWLF SYCMEDIHMAFIGIFTTMTGMAMTAFASSTLM  
 MFLARVPFLFTIVPFSVLRSM LSKVVRSTEQGTLFACIAFLET LGGVTAVSTFNGIYSATVAWYPGF TFL  
 L SAGLLLLPAISLCVVKCTSWNEGSYELLIQEESSEDASDR

**TR**TRPLEQKLISEEDLAANDILDYKDDDDKV

**Chromatograms:**

[https://cdn.origene.com/chromatograms/mk6244\\_h04.zip](https://cdn.origene.com/chromatograms/mk6244_h04.zip)

**Restriction Sites:**

Sgfl-Mlul

Cloning Scheme:



ACCN: NM\_181785

ORF Size: 1383 bp

OTI Disclaimer: The molecular sequence of this clone aligns with the gene accession number as a point of reference only. However, individual transcript sequences of the same gene can differ through naturally occurring variations (e.g. polymorphisms), each with its own valid existence. This clone is substantially in agreement with the reference, but a complete review of all prevailing variants is recommended prior to use. [More info](#)

OTI Annotation: This clone was engineered to express the complete ORF with an expression tag. Expression varies depending on the nature of the gene.

Components: The ORF clone is ion-exchange column purified and shipped in a 2D barcoded Matrix tube containing 10ug of transfection-ready, dried plasmid DNA (reconstitute with 100 ul of water).

Reconstitution Method:

1. Centrifuge at 5,000xg for 5min.
2. Carefully open the tube and add 100ul of sterile water to dissolve the DNA.
3. Close the tube and incubate for 10 minutes at room temperature.
4. Briefly vortex the tube and then do a quick spin (less than 5000xg) to concentrate the liquid at the bottom.
5. Store the suspended plasmid at -20°C. The DNA is stable for at least one year from date of shipping when stored at -20°C.

Note: Plasmids are not sterile. For experiments where strict sterility is required, filtration with 0.22um filter is required.

RefSeq: [NM\\_181785.4](#)

RefSeq Size: 3372 bp

RefSeq ORF: 1386 bp

Locus ID: 283537

UniProt ID: [Q7Z3Q1](#)

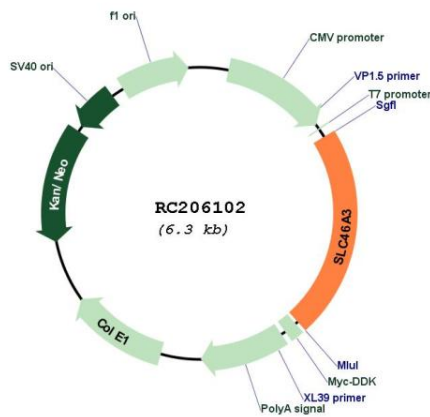
Cytogenetics: 13q12.3

Protein Families: Transmembrane

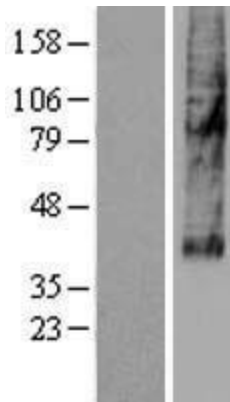
MW: 51.6 kDa

**Gene Summary:** The protein encoded by this gene is a member of a transmembrane protein family that transports small molecules across membranes. The encoded protein has been found in lysosomal membranes, where it can transport catabolites from the lysosomes to the cytoplasm. This protein has been shown to be an effective transporter of the cytotoxic drug maytansine, which is used in antibody-based targeting of cancer cells. [provided by RefSeq, Dec 2016]

**Product images:**



Circular map for RC206102



Western blot validation of overexpression lysate (Cat# [LY405616]) using anti-DDK antibody (Cat# [TA50011-100]). Left: Cell lysates from untransfected HEK293T cells; Right: Cell lysates from HEK293T cells transfected with RC206102 using transfection reagent MegaTran 2.0 (Cat# [TT210002]).