

Product datasheet for **RC206101**

CCDC93 (NM_019044) Human Tagged ORF Clone

Product data:

Product Type:	Expression Plasmids
Product Name:	CCDC93 (NM_019044) Human Tagged ORF Clone
Tag:	Myc-DDK
Symbol:	CCDC93
Mammalian Cell Selection:	Neomycin
Vector:	pCMV6-Entry (PS100001)
E. coli Selection:	Kanamycin (25 ug/mL)



[View online »](#)

ORF Nucleotide
Sequence:

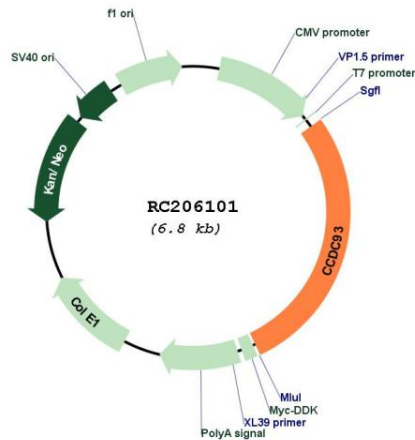
>RC206101 ORF sequence
Red=Cloning site Blue=ORF Green=Tags(s)

TTTTGTAATACGACTCACTATAGGGCGGCCGGGAATTCGTCGACTGGATCCGGTACCGAGGAGATCTGCC
GCC**CGGATCGCC**

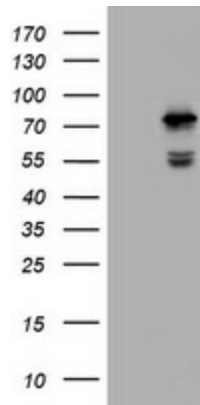
ATGGGTTTGCCAGGGGGCCGAGGGCCAGGGTCTCCCGAGGTGAAACAAGAGAAGATGAAGAACAAA
ATGTCAAGTTGACTGAAATCTGGAGCTTTGGTTGCAGCTGGGCATTTCAAGGCCAAGAATTAAGGCTT
ATCACCCTTTGACAAGGTAGTAGGAGGAATGACTTGGTGTATCACCACTTGCAACTTTGATGTAGATGTT
GATTTGCTCTTTCAAGAAACTCTACGATAGGTCAAAAAATAGCTCTGTCAAAAAAATTGTCTCGGTCC
TGCCAAGGATGAAATGCCACACCAGCTGGAGCCCCACCAGATCCAGGGGATGGATTTTATTACATATT
TCCTGTTGTTCAAGTGGTGTGAAACGAGCTATAGAAACAAAAGAAGAGATGGGTGACTATATCCGCTCC
TACTCTGTATCCAGTTCAGAAAGACTTACAGTCTCCCTGAGGATGATGACTTCATAAAGAGAAAAGAAA
AGGCCATCAAGACAGTTGTGGACCTCTCAGAAGGTACAAGCCCCGTCGAAAATACAACGCCACCAGGG
AGCAGAGGAGCTACTTGATGAAGAATCTCGAATCCATGCTACACTTTTGGAAATATGGCAGGAGATATGGA
TTTAGCTGCCAGAGCAAATGGAGAAGGCTGAGGACAAGAAAACGGCACTTCAGCAGGGCTGTCAAGCTA
CAGAAAAAGCTGATGCCACGAGGAAGATGAGCTTCGAGCAGCTGAAGAGCAGCGTATTCAGTCCGCTGAT
GACCAAGATGACCGCTATGGCAAATGAGGAGAGCCGCTCACCCGAAGCTCCGTGGGCCAGATTGTGGGA
CTCTGCTCTGCTGAGATCAAGCAGATTGTGTCCGAGTATGCAGAGAAGCAGTCTGAGCTATCAGCTGAAG
AAAGTCCAGAAAAATTAGGAACCTCCAGCTACATCGCCGAAAGTCATTTCTTGAACAAACAGATTGC
GCAAAAGACCAACATCTTGAAGAGCTGCGAGCAAGTACACCAGCCTACAAGCCAGATATAATGAAGCC
AAGAAAACGCTGACAGAGCTGAAGACTTACAGTGAGAACTGGACAAAGAGCAAGCAGCCCTCGAGAAGA
TAGAATCCAAAGCTGATCCAAGTATCCTACAGAACCTGAGAGCACTTGTAGCCATGAATGAAAATCTGAA
AAGTCAAGAACAGGAATTTAAAGCACATTGTGCGAGAGGAGATGACACGACTACAGCAAGAAATTGAAAAC
CTGAAAGCTGAGAGAGCACACGTTGGAGATGAAAAGACCTCTCCAGTGGAGAGCCGCTGTTACCTTGA
CCTCTGCAATGACTCATGACGAAGACCTAGACAGACGGTATAATATGGAGAAAGAGAAAATTTACAAGAT
ACGTTTACTACAGGCTCGAAGAAATCGAGAAATAGCAATTTTGCACCGCAAGATTGATGAAGTCCCTAGC
CGTGCCGAGCTAATACAGTATCAGAAGAGATTTATTGAACTCTACCGCCAGATTTAGCAGTGCACAAAG
AAACCAAGCAGTTCTTCACTTTATATAATACCCTGGATGATAAAAAGTTTATTTGGAAAAAGAGATTAG
TCTGCTGAACTCAATTCATGAGAACTTCTCACAGGCCATGGCCTCCCCTGCTGCCGGGACCAGTTTTTA
CGTCAGATGGAACAGATTGTGGAAGGAATTAAGCAAAGTGAATGAAGATGGAAAAGAAAAGCAAGAGA
ACAAAATGAGAAGAGACCAGTTGAACGACCAGTACTTGGAGCTGTTAGAAAAGCAGAGGCTATACTTTAA
GACTGTGAAAGAGTTCAAGGAGGAGGGCCGAAGAACGAGATGCTGCTGTCCAAGGTGAAAGCGAAGGCC
TCC

ACGCGTACGCGGCCGCTCGAGCAGAACTCATCTCAGAAGAGGATCTGGCAGCAAATGATATCCTGGATT
ACAAGGATGACGACGATAAGGTTTAA

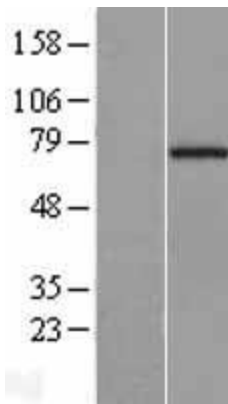
Components:	The ORF clone is ion-exchange column purified and shipped in a 2D barcoded Matrix tube containing 10ug of transfection-ready, dried plasmid DNA (reconstitute with 100 ul of water).
Reconstitution Method:	<ol style="list-style-type: none">1. Centrifuge at 5,000xg for 5min.2. Carefully open the tube and add 100ul of sterile water to dissolve the DNA.3. Close the tube and incubate for 10 minutes at room temperature.4. Briefly vortex the tube and then do a quick spin (less than 5000xg) to concentrate the liquid at the bottom.5. Store the suspended plasmid at -20°C. The DNA is stable for at least one year from date of shipping when stored at -20°C.
RefSeq:	<u>NM_019044.5</u>
RefSeq Size:	6946 bp
RefSeq ORF:	1896 bp
Locus ID:	54520
UniProt ID:	<u>Q567U6</u>
Cytogenetics:	2q14.1
MW:	73.1 kDa
Gene Summary:	Component of the CCC complex, which is involved in the regulation of endosomal recycling of surface proteins, including integrins, signaling receptor and channels. The CCC complex associates with SNX17, retriever and WASH complexes to prevent lysosomal degradation and promote cell surface recycling of numerous cargos such as integrins ITGA5:ITGB1 (PubMed:28892079, PubMed:25355947). Involved in copper-dependent ATP7A trafficking between the trans-Golgi network and vesicles in the cell periphery; the function is proposed to depend on its association within the CCC complex and cooperation with the WASH complex on early endosomes and is dependent on its interaction with WASHC2C (PubMed:25355947). [UniProtKB/Swiss-Prot Function]

Product images:


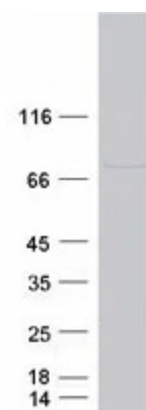
Circular map for RC206101



HEK293T cells were transfected with the pCMV6-ENTRY control (Cat# [PS100001], Left lane) or pCMV6-ENTRY CCDC93 (Cat# RC206101, Right lane) cDNA for 48 hrs and lysed. Equivalent amounts of cell lysates (5 ug per lane) were separated by SDS-PAGE and immunoblotted with anti-CCDC93(Cat# [TA800559]). Positive lysates [LY412751] (100ug) and [LC412751] (20ug) can be purchased separately from OriGene.



Western blot validation of overexpression lysate (Cat# [LY412751]) using anti-DDK antibody (Cat# [TA50011-100]). Left: Cell lysates from untransfected HEK293T cells; Right: Cell lysates from HEK293T cells transfected with RC206101 using transfection reagent MegaTran 2.0 (Cat# [TT210002]).



Coomassie blue staining of purified CCDC93 protein (Cat# [TP306101]). The protein was produced from HEK293T cells transfected with CCDC93 cDNA clone (Cat# RC206101) using MegaTran 2.0 (Cat# [TT210002]).