

## Product datasheet for RC206092

### ACKR3 (NM\_020311) Human Tagged ORF Clone

#### Product data:

Product Type:	Expression Plasmids
Product Name:	ACKR3 (NM_020311) Human Tagged ORF Clone
Tag:	Myc-DDK
Symbol:	ACKR3
Synonyms:	CMKOR1; CXC-R7; CXCR-7; CXCR7; GPR159; RDC-1; RDC1
Mammalian Cell Selection:	Neomycin
Vector:	pCMV6-Entry (PS100001)
E. coli Selection:	Kanamycin (25 ug/mL)
ORF Nucleotide Sequence:	>RC206092 representing NM_020311 Red=Cloning site Blue=ORF Green=Tags(s)

TTTTGTAATACGACTCACTATAGGGCGCCGGGAATTCGTCGACTGGATCCGGTACCGAGGAGATCTGCC  
GCC**CGATCGCC**

ATGGATCTGCATCTCTTCGACTACTCAGAGCCAGGGAACCTCTCGGACATCAGCTGGCCATGCAACAGCA  
GCGACTGCATCGTGGTGGACACGGTGATGTGTCCCAACATGCCCAACAAAAGCGTCTGTCTACACGCT  
CTCCTTACATTTTACATTTTTCATCTTCGTCATCGGCATGATTGCCAACTCCGTGGTGGTCTGGGTGAATATC  
CAGGCCAAGACCACAGGCTATGACACGCACTGCTACATCTTGAACCTGGCCATTGCCGACCTGTGGGTTG  
TCCTCACCATCCCAGTCTGGGTGGTCTCGTGCAGCACAACCAGTGGCCCATGGGCGAGCTCACGTG  
CAAAGTCACACACCTCATCTTCCATCAACCTCTTCGGCAGCATTTTCTTCCCTACGTGCATGAGCGTG  
GACCGCTACCTCTCCATCACCTACTTCCACCAACACCCCAAGCAGCAGGAAGAAGATGGTACGCCGTGTCG  
TCTGCATCCTGGTGTGGCTGCTGGCCTTCTGCGTGTCTCTGCCTGACACCTACTACCTGAAGACCGTCAC  
GTCTGCGTCCAACAATGAGACCTACTGCCGGTCTTCTACCCCGAGCACAGCATCAAGGAGTGGCTGATC  
GGCATGGAGCTGGTCTCCGTTGTCTTGGGCTTGGCCGTTCCCTTCTCCATTGTGCGTGTCTTCTACTTCC  
TGCTGGCCAGAGCCATCTCGCGTCCAGTGACCAGGAGAAGCACAGCAGCCGGAAGATCATCTTCTCCTA  
CGTGGTGGTCTTCTTGTCTGCTGGTTGCCCTACCACGTGGCGGTGCTGCTGGACATCTTCTCCATCCTG  
CACTACATCCCTTTCACCTGCCGGTGGAGCAGCCCTTTCACGGCCCTGCATGTCACACAGTGCCTGT  
CGCTGGTGCATGCTGCGTCAACCCTGTCTCTACAGTTCATCAATCGAACTACAGGTACGAGCTGAT  
GAAGGCCTTTCATCTTCAAGTACTCGGCCAAAACAGGGCTCACCAAGCTCATCGATGCCTCCAGAGTCTCA  
GAGACGGAGTACTCTGCCTTGGAGCAGAGCACAAA

**ACGCGT**ACGCGGCCGCTCGAGCAGAACTCATCTCAGAAGAGGATCTGGCAGCAAATGATATCCTGGATT  
ACAAGGATGACGACGATAAGGTTAA



[View online »](#)

**Protein Sequence:** >RC206092 representing NM\_020311  
Red=Cloning site Green=Tags(s)

MDLHLFDYSEPGNFSDISWPCNSSDCIVVDTVMCPNMPNKSULLYTLFSFIYIFIFVIGMIANSVVVWVNI  
 QAKTTGYDTHCYILNLAIALDWVLTIPVWVSLVQHNQWPMGELTCKVTHLIFSINLFGSIFFLTCMSV  
 DRYLSITYFTNTPSSRKKMVRVVCILVWLLAFVSLPDTYYLKTVTSASNNETYCRSFYPEHSIKEWLI  
 GMELVSVVLGFVAVFYFLLARAISSASDQEKHSSRKIIFSYVVVFLVCWLPYHVAVLLDIFSIL  
 HYIPFTCRLEHALFTALHVTQCLSLVHCCVNPVLYSFINRNYRYELMKAFIFKYSAKTGLTKLIDASRVS  
 ETEYSALEQSTK

TRTRPLEQKLISEEDLAANDILDYKDDDDKV

**Chromatograms:** [https://cdn.origene.com/chromatograms/mg2522\\_e04.zip](https://cdn.origene.com/chromatograms/mg2522_e04.zip)

**Restriction Sites:** SgfI-MluI

**Cloning Scheme:**



\* The last codon before the Stop codon of the ORF

**ACCN:** NM\_020311

**ORF Size:** 1086 bp

**OTI Disclaimer:** The molecular sequence of this clone aligns with the gene accession number as a point of reference only. However, individual transcript sequences of the same gene can differ through naturally occurring variations (e.g. polymorphisms), each with its own valid existence. This clone is substantially in agreement with the reference, but a complete review of all prevailing variants is recommended prior to use. [More info](#)

**OTI Annotation:** This clone was engineered to express the complete ORF with an expression tag. Expression varies depending on the nature of the gene.

**Components:** The ORF clone is ion-exchange column purified and shipped in a 2D barcoded Matrix tube containing 10ug of transfection-ready, dried plasmid DNA (reconstitute with 100 ul of water).

**Reconstitution Method:**

1. Centrifuge at 5,000xg for 5min.
2. Carefully open the tube and add 100ul of sterile water to dissolve the DNA.
3. Close the tube and incubate for 10 minutes at room temperature.
4. Briefly vortex the tube and then do a quick spin (less than 5000xg) to concentrate the liquid at the bottom.
5. Store the suspended plasmid at -20°C. The DNA is stable for at least one year from date of shipping when stored at -20°C.

**Note:** Plasmids are not sterile. For experiments where strict sterility is required, filtration with 0.22um filter is required.

**RefSeq:** [NM\\_020311.3](#)

**RefSeq Size:** 2114 bp

**RefSeq ORF:** 1089 bp

**Locus ID:** 57007

**UniProt ID:** [P25106](#)

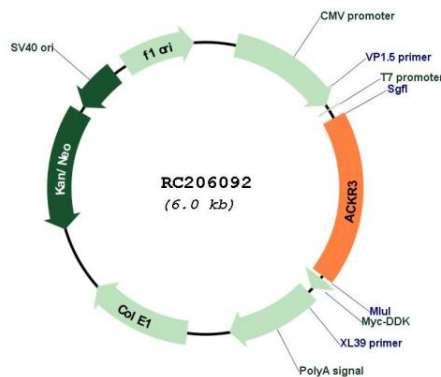
**Cytogenetics:** 2q37.3

**Protein Families:** Druggable Genome, GPCR, Transmembrane

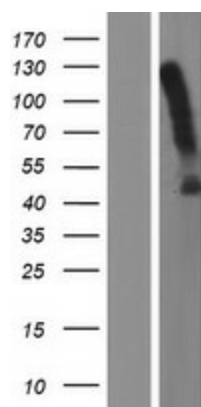
**MW:** 41.3 kDa

**Gene Summary:** This gene encodes a member of the G-protein coupled receptor family. Although this protein was earlier thought to be a receptor for vasoactive intestinal peptide (VIP), it is now considered to be an orphan receptor, in that its endogenous ligand has not been identified. The protein is also a coreceptor for human immunodeficiency viruses (HIV). Translocations involving this gene and HMGA2 on chromosome 12 have been observed in lipomas. [provided by RefSeq, Jul 2008]

### Product images:



Circular map for RC206092



Western blot validation of overexpression lysate (Cat# [LY402766]) using anti-DDK antibody (Cat# [TA50011-100]). Left: Cell lysates from untransfected HEK293T cells; Right: Cell lysates from HEK293T cells transfected with RC206092 using transfection reagent MegaTran 2.0 (Cat# [TT210002]).