

Product datasheet for **RC206089**

FBXL5 (NM_033535) Human Tagged ORF Clone

Product data:

Product Type:	Expression Plasmids
Product Name:	FBXL5 (NM_033535) Human Tagged ORF Clone
Tag:	Myc-DDK
Symbol:	FBXL5
Synonyms:	F-box and leucine-rich repeat protein 5; F-box protein FBL5; FBL4; FBL5; FLR1
Mammalian Cell Selection:	Neomycin
Vector:	pCMV6-Entry (PS100001)
E. coli Selection:	Kanamycin (25 ug/mL)



[View online »](#)

**ORF Nucleotide
Sequence:**

>RC206089 ORF sequence
 Red=Cloning site Blue=ORF Green=Tags(s)

TTTTGTAATACGACTCACTATAGGGCGGCCGGAATTCGTGCGACTGGATCCGGTACCGAGGAGATCTGCC
 GCC**CGGATCGCC**

ATGGCGCCCTTTCTGAAGAAGTGGACGTCTTCACCGCCCCACACTGGCGGATGAAGCAGCTGGTGGGGC
 TCTACTGCGACAAGCTTTCTAAAACCAATTTTCCAACAACAACGATTTCCGTGCTCTTCTGCAGCTTT
 GTATGCTACTTTACGGAGTTCAAATGCATGAGCAGATTGAAAATGAATACATTATTGGTTTGCTTCAA
 CAACGCAGCCAGACCATTATAATGTACATTCTGACAATAAACTCTCGAGATGCTTAGCCTCTTTGAAA
 AGGGACTGAAGAATGTTAAGAATGAATGAACAGTTAAATTAAGCAAAACAAGTAAAGAGAGATTGGA
 GGCTTTTACAAGAGATTTTCTTCTCACATGAAAGAGGAAGAGGAGGTTTTTTCAGCCCATGTTAATGGAA
 TATTTTACCTATGAAGAGCTTAAGGATATTAAGAAAGAAAGTATTGCACAACACTGCTCTCAGAAGGATA
 CTGCAGAACTCCTTAGAGGTCTTAGCCTATGGAATCATGCTGAAGAGCGACAGAAGTTTTTAAATATTC
 CGTGGATGAAAAGTCAGATAAAGAAGCAGAAGTGTGCAACACTCCACAGGTATAACCCATCTTCTCCT
 GAGGTAATGCTGTCAATTTTTCAGCTATCTTAATCTCAAGAGTTATGTCGATGCAGTCAAGTAAAGCATGA
 AATGGTCTCAGCTGACAAAAACGAGATCGCTTTGGAAACATCTTACCCTGTTTCATTGGGCCAGAGGTGA
 CTGGTATAGTGGTCCCGCAACTGAACCTGATACTGAACCTGATGATGAATGGGTGAAAAATAGGAAAGAT
 GAAAGTCGTGCTTTTTCATGAGTGGGATGAAGATGCTGACATTGATGAATCTGAAGAGTCTGCGGAGGAAT
 CAATTGCTATCAGATTGCACAAATGAAAAACGTTTACTCCATGGCTTAATTCATAACGTTCTACCATA
 TGTTGGTACTTCTGTA AAAACCTTAGTATTAGCATACAGCTCTGCAGTTTCCAGCAAAATGGTTAGGCAG
 ATTTTAGAGCTTTGTCTAACCTGGAGCATCTGGATCTTACCCAGACTGACATTTTCAGATTCTGCATTTG
 ACAGTTGGTCTTGGCTTGGTTGCTGCCAGAGTCTTGGCATCTTGATCTGTCTGGTTGTGAGAAAAATCAC
 AGATGTGGCCCTAGAGAAGATTTCCAGAGCTCTTGGAAATCTGACATCTCATCAAAGTGGCTTTTTGAAA
 ACATCTACAAGCAAAATTACTTCAACTGCGTGGAAAAATAAAGACATTACCATGCAGTCCACCAAGCAGT
 ATGCCTGTTTGCACGATTTAACTAACAAGGGCATTGGAGAAGAAATAGATAATGAACACCCTGGACTAA
 GCCTGTTTCTTCTGAGAATTTCACTTCTCCTTATGTGTGGATGTTAGATGCTGAAGATTTGGCTGATATT
 GAAGATACTGTGGAATGGAGACATAGAAATGTTGAAAGTCTTTGTGTAATGGAACAGCATCCAACTTTA
 GTTGTCCACCTCTGGTTGTTTTAGTAAGGACATTGTTGGACTAAGGACTAGTGTCTGTTGGCAGCAGCA
 TTGTGCTTCTCCAGCCTTTGCGTATTGTGGTCACTCATTTTGTGTACAGGAACAGCTTTAAGAATATG
 TCATCACTCCAGAACTTCTGCAATGTGTAGAAAAGCAGCAAGGACTAGATTGCCTAGGGGAAAAGACT
 TAATTTACTTTGGGAGTAAAAATCTGATCAAGAGACTGGACGTGACTTCTGTTTCTCAGTTTATCTGG
 ATGTTATCAGATCACAGACCATGGTCTCAGGGTTTTGACTCTGGGAGGAGGGCTGCCTTATTTGGAGCAC
 CTTAATCTCTCTGTTGTCTTACTATAACTGGTGCAGGCCTGCAGGATTTGGTTTCAGCATGTCCTTCTC
 TGAATGATGAATACTTTTACTACTGTGACAACATTAACGGTCTCATGCTGATACCGCCAGTGGATGCCA
 GAATTTGCAGTGTGTTTTTCGAGCCTGCTGCCGCTCTGGCGAA

ACGCGTACGCGGCCGCTCGAGCAGAACTCATCTCAGAAGAGGATCTGGCAGCAATGATATCCTGGATT
 ACAAGGATGACGACGATAAGGTTTAA

Protein Sequence: >RC206089 protein sequence
Red=Cloning site Green=Tags(s)

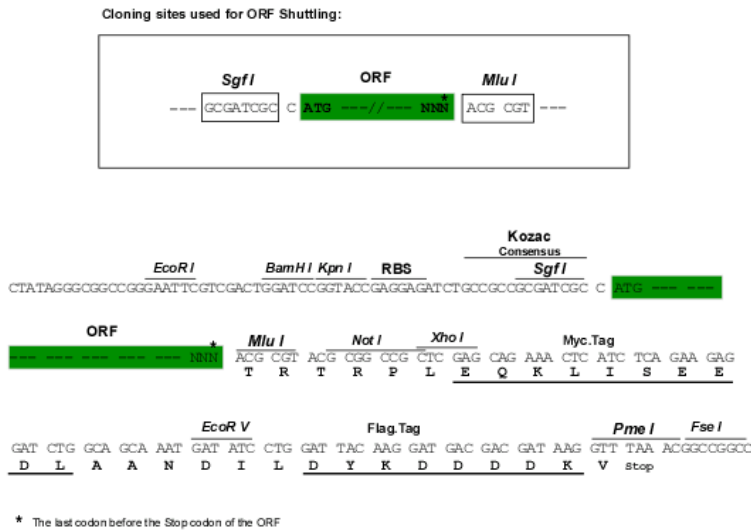
```
MAPFP EEVDVFTAPHWRMKQLVGLYCDKLSKTNFSNNNDFRALLQSLYATFTEFKMHEQIENEYIIGLLQ
QRSQTIYNVHSDNKLSEMLSLFEKGLKNVKNEYQLNYAKQLKERLEAFTRDFLPHMKEEEEVFQPLME
YFTYEELKDIIKKKVIAQHCSQKDTAELLRGLSLWNHAEERQKFFKYSVDEKSDKEAEVSEHSTGITHLPP
EVMLSIFSYLNPQELCRCSQVSMKWSQLTKTRSLWKHLYPVHWARGDWYSGPATELDTPEPDEWVKNRKD
ESRAFHEWDEDADIDEESESAEESIAISIAQMEKRLHGLIHNVLPHYVGTSVKTLVLAYSSAVSSKMVRQ
ILELCPNLEHLDLTQTDISDSAFDSWSWLGCCQSLRHLDLSGCEKITDVALEKISRALGILTSHQSGFLK
TSTSKITSTAWKNKDITMQSTKQYACLHDLTNKIGIEEIDNEHPWTKPVSSNFSTSPYVWMLDAEDLADI
EDTVEWRHRNVEVSLCVMETASNFSCSTSGCFSKDIVGLRVSVCWQHCASPAYCGHSFCCTGTALRTM
SSLPESSAMCRKAARTRLPGRKDLIYFGSEKSDQETGRVLLFLSLSGCYQITDHGLRVLTLGGGLPYLEH
LNLSGCLTITGAGLQDLVSACPSLNDEYFYCDNINGPHADTASGCQNLQCGFRACCRSGE
```

TRTRPLEQKLISEEDLAANDILDYKDDDDKV

Chromatograms: https://cdn.origene.com/chromatograms/mk6318_d09.zip

Restriction Sites: SgfI-MluI

Cloning Scheme:



ACCN: NM_033535

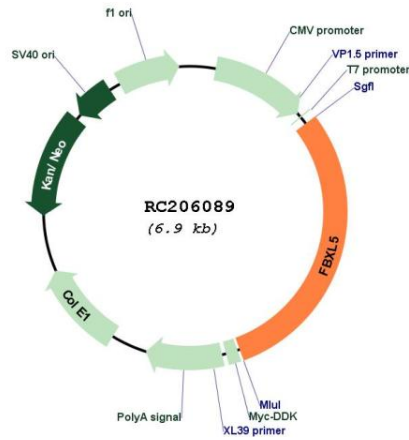
ORF Size: 2076 bp

OTI Disclaimer: The molecular sequence of this clone aligns with the gene accession number as a point of reference only. However, individual transcript sequences of the same gene can differ through naturally occurring variations (e.g. polymorphisms), each with its own valid existence. This clone is substantially in agreement with the reference, but a complete review of all prevailing variants is recommended prior to use. [More info](#)

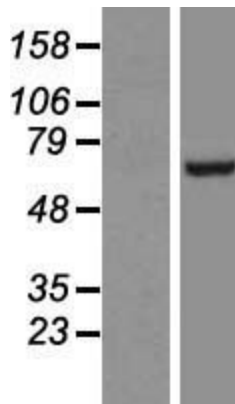
OTI Annotation: This clone was engineered to express the complete ORF with an expression tag. Expression varies depending on the nature of the gene.

Components:	The ORF clone is ion-exchange column purified and shipped in a 2D barcoded Matrix tube containing 10ug of transfection-ready, dried plasmid DNA (reconstitute with 100 ul of water).
Reconstitution Method:	<ol style="list-style-type: none">1. Centrifuge at 5,000xg for 5min.2. Carefully open the tube and add 100ul of sterile water to dissolve the DNA.3. Close the tube and incubate for 10 minutes at room temperature.4. Briefly vortex the tube and then do a quick spin (less than 5000xg) to concentrate the liquid at the bottom.5. Store the suspended plasmid at -20°C. The DNA is stable for at least one year from date of shipping when stored at -20°C.
RefSeq:	<u>NM_033535.2</u> , <u>NP_277077.1</u>
RefSeq Size:	3644 bp
RefSeq ORF:	1697 bp
Locus ID:	26234
Cytogenetics:	4p15.32
Domains:	LRR, F-box, LRR_CC
Protein Families:	Druggable Genome
MW:	78.6 kDa
Gene Summary:	This gene encodes a member of the F-box protein family which is characterized by an approximately 40 amino acid motif, the F-box. The F-box proteins constitute one of the four subunits of ubiquitin protein ligase complex called SCFs (SKP1-cullin-F-box), which function in phosphorylation-dependent ubiquitination. The F-box proteins are divided into 3 classes: Fbws containing WD-40 domains, Fbls containing leucine-rich repeats, and Fbxs containing either different protein-protein interaction modules or no recognizable motifs. The protein encoded by this gene belongs to the Fbls class and, in addition to an F-box, contains several tandem leucine-rich repeats. Alternatively spliced transcript variants have been described for this locus. [provided by RefSeq, Aug 2010]

Product images:



Circular map for RC206089



Western blot validation of overexpression lysate (Cat# [LY415940]) using anti-DDK antibody (Cat# [TA50011-100]). Left: Cell lysates from untransfected HEK293T cells; Right: Cell lysates from HEK293T cells transfected with [RC216550] using transfection reagent MegaTran 2.0 (Cat# [TT210002]).