

Product datasheet for **RC206074**

STK38L (NM_015000) Human Tagged ORF Clone

Product data:

Product Type:	Expression Plasmids
Product Name:	STK38L (NM_015000) Human Tagged ORF Clone
Tag:	Myc-DDK
Symbol:	STK38L
Synonyms:	NDR2
Mammalian Cell Selection:	Neomycin
Vector:	pCMV6-Entry (PS100001)
E. coli Selection:	Kanamycin (25 ug/mL)



[View online »](#)

ORF Nucleotide Sequence:

>RC206074 ORF sequence
 Red=Cloning site Blue=ORF Green=Tags(s)

TTTTGTAATACGACTCACTATAGGGCGGCCGGAATTCGTCGACTGGATCCGGTACCGAGGAGATCTGCC
 GCC**CGCATCGCC**

ATGGCAATGACGGCAGGGACTACAACAACCTTTCTATGAGCAACCATACCCGGAAAGAGTGACTGTAG
 CCAAGCTCACATTGGAGAATTTTATAGCAACCTAATTTTACAGCATGAAGAGAGAGAAAACCAGGCAGAA
 GAAATTAGAAGTGGCCATGGAAGAAGAAGGATTAGCAGATGAAGAGAAAAAGTTACGTCGATCACAAAC
 GCTCGAAAGAAACAGAGTTCTTACGGCTCAAAGGACCAGACTTGGCTTGGATGACTTTGAGTCTCTGA
 AAGTTATAGGAAGAGGAGCTTTTGGAGAGGTGCGGTTGGTCCAGAAGAAAGATACAGGCCATATCTATGC
 AATGAAGATATTGAGAAAGTCTGATATGCTTGA AAAAGAGCAGGTGGCCCATATCCGAGCAGAAAGAGAT
 ATTTTGGTAGAAGCAGATGGTGCCTGGGTGGTGAAGATGTTTTACAGTTTTTCAGGATAAGAGGAATCTTT
 ATCTAATCATGGAATTTCTCCCTGGAGGTGACATGATGACATTGCTAATGAAGAAAGACACCTTGACAGA
 AGAGGAAACACAGTTCTACATTTAGAGACTGTTCTGGCAATAGATGCGATCCACCAGTTGGGTTTCATC
 CATCGGGATATTAAGCCAGACAACCTTTTATTGGATGCCAAGGGTCATGTAAAATTATCTGATTTTGGTT
 TATGTACGGGATTAAGAAAGCTCACAGGACTGAATTTTATAGAAATCTCACACACAACCCACCAAGTGA
 CTTCTCATTTTCAGAACATGAACTCAAAGAGGAAAGCAGAACTTGGAGAAGAACAGGAGACAACCTGGCA
 TATCCACAGTTGGGACACCAGATTACATTGCTCCAGAAGTATTCATGCAGACTGGTTACAACAAATTTGT
 GTGACTGGTGGTCTTTGGGAGTGATTATGTATGAAATGCTAATAGGATATCCACCTTTCTGCTCTGAAAC
 ACCTCAAGAAACATACAGAAAAGTGATGAACTGGAAAGAACTCTGGTATTTCTCCAGAGGTACCTATA
 TCTGAGAAAGCCAAGGACTTAATTTCTCAGATTTTGTATTGATTCTGAAAACAGAATTGAAATAGTGGAG
 TAGAAGAAATAAAAGTCAATCCCTTTTTTGAAGGTGTCGACTGGGAGCACATAAGGGAAGGCCAGCAGC
 AATCCCTATAGAAATCAAAGCATTGATGATACTCAAATTTTGGATGACTCCCTGAATCTGATATTTTA
 CAACCAAGTGCCAAATACCACAGAACCGGACTACAATCCAAGACTGGGTTTTTCTCAATTATACCTATA
 AAAGGTTTGAAGGTTGACTCAACGTGGCTCTATCCACCTACATGAAAGCTGGGAAGTTA

ACGCGTACGCGGCCGCTCGAGCAGAAACTCATCTCAGAAGAGGATCTGGCAGCAAATGATATCTGGATT
 ACAAGGATGACGACGATAAGGTTTAA

Protein Sequence:

>RC206074 protein sequence
 Red=Cloning site Green=Tags(s)

MAMTAGTTTTFPMSNHTRERVTVAKLTLENFYSNLILQHEERETRQKKLEVAMEEEGLADEEKKLRRSQH
 ARKETEFRLRKRTRLGLDDFESLKVIGRGAFGEVRLVQKKDTGHIYAMKILRKSDMLEKEQVAHIRAERD
 ILVEADGAWVVKMFYSFQDKRNLYLIMEFLPGGDMMLLMKKDTL TEEETQFYISETVLAIDA IHLQGF I
 HRDIKPDNLLLDAGHVKLSDFGLCTGLKKAHRTEFYRNLTHNPPSDFSQNMNSKRKAETWKNRRQLA
 YSTVGTDPDYIAPEVFMQTYNKLCDWWSLGVIMYEMLIGYPPFCSETPQETYRKVMNWKETLVFPPEVPI
 SEKAKDLILRFCDISENRIGNSGVEEIKGHPFFEGVDWEHIRERPAAIPIEIKSIDDTSNFDDFPESDIL
 QVPVNTTEPDYKSKDWVFLNYTYKRFEGLTQRGSIPTYMKAGKL

TRTRPLEQKLISEEDLAANDILDYKDDDDKV

Chromatograms:

https://cdn.origene.com/chromatograms/mk6072_d04.zip

Restriction Sites:

Sgfl-MluI

Cloning Scheme:


ACCN: NM_015000

ORF Size: 1392 bp

OTI Disclaimer: Due to the inherent nature of this plasmid, standard methods to replicate additional amounts of DNA in E. coli are highly likely to result in mutations and/or rearrangements. Therefore, OriGene does not guarantee the capability to replicate this plasmid DNA. Additional amounts of DNA can be purchased from OriGene with batch-specific, full-sequence verification at a reduced cost. Please contact our customer care team at custsupport@origene.com or by calling 301.340.3188 option 3 for pricing and delivery.

The molecular sequence of this clone aligns with the gene accession number as a point of reference only. However, individual transcript sequences of the same gene can differ through naturally occurring variations (e.g. polymorphisms), each with its own valid existence. This clone is substantially in agreement with the reference, but a complete review of all prevailing variants is recommended prior to use. [More info](#)

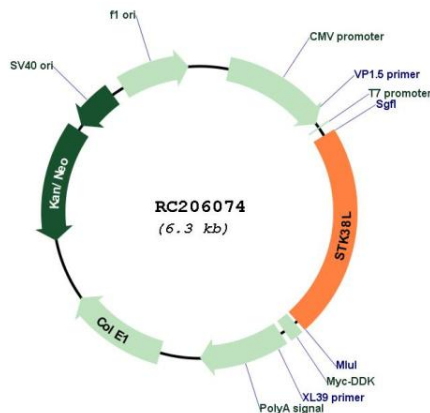
OTI Annotation: This clone was engineered to express the complete ORF with an expression tag. Expression varies depending on the nature of the gene.

Components: The ORF clone is ion-exchange column purified and shipped in a 2D barcoded Matrix tube containing 10ug of transfection-ready, dried plasmid DNA (reconstitute with 100 ul of water).

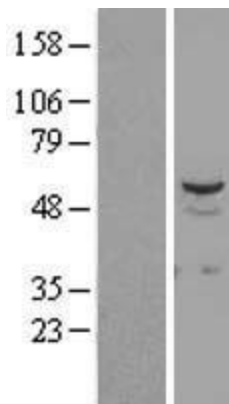
- Reconstitution Method:**
1. Centrifuge at 5,000xg for 5min.
 2. Carefully open the tube and add 100ul of sterile water to dissolve the DNA.
 3. Close the tube and incubate for 10 minutes at room temperature.
 4. Briefly vortex the tube and then do a quick spin (less than 5000xg) to concentrate the liquid at the bottom.
 5. Store the suspended plasmid at -20°C. The DNA is stable for at least one year from date of shipping when stored at -20°C.

RefSeq: [NM_015000.2](#)
RefSeq Size: 5110 bp
RefSeq ORF: 1395 bp
Locus ID: 23012
UniProt ID: [Q9Y2H1](#)
Cytogenetics: 12p11.23
Domains: pkinase
Protein Families: Druggable Genome, Protein Kinase
MW: 54 kDa
Gene Summary: Involved in the regulation of structural processes in differentiating and mature neuronal cells. [UniProtKB/Swiss-Prot Function]

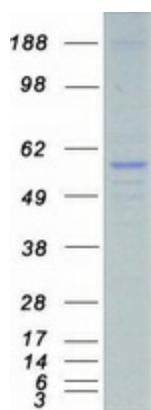
Product images:



Circular map for RC206074



Western blot validation of overexpression lysate (Cat# [LY414864]) using anti-DDK antibody (Cat# [TA50011-100]). Left: Cell lysates from untransfected HEK293T cells; Right: Cell lysates from HEK293T cells transfected with RC206074 using transfection reagent MegaTran 2.0 (Cat# [TT210002]).



Coomassie blue staining of purified STK38L protein (Cat# [TP306074]). The protein was produced from HEK293T cells transfected with STK38L cDNA clone (Cat# RC206074) using MegaTran 2.0 (Cat# [TT210002]).