

Product datasheet for **RC206072**

SCCPDH (NM_016002) Human Tagged ORF Clone

Product data:

Product Type:	Expression Plasmids
Product Name:	SCCPDH (NM_016002) Human Tagged ORF Clone
Tag:	Myc-DDK
Symbol:	SCCPDH
Synonyms:	CGI-49; NET11
Mammalian Cell Selection:	Neomycin
Vector:	pCMV6-Entry (PS100001)
E. coli Selection:	Kanamycin (25 ug/mL)



[View online »](#)

ORF Nucleotide
Sequence:

>RC206072 ORF sequence
Red=Cloning site Blue=ORF Green=Tags(s)

TTTTGTAATACGACTCACTATAGGGCGGCCGGAATTCGTCGACTGGATCCGGTACCGAGGAGATCTGCC
GCCCGCATCGCC

ATGGCGACCGAGCAGAGGCCTTCCACCTGGTGGTGTTCGGCGCTCTGGCTTACCGGCCAGTTCGTGA
CCGAGGAGGTGGCCCGGAGCAGGTGGACCCGGAGCGGAGCTCCCGCTGCCCTGGGCCGTGGCGGCCG
CTCCCGGAGAAGCTGCAGCGGGTGTGGAGAAGCGGCCCTGAAGCTGGGAAGACCAACTGTATCT
GAAGTTGGAATCATCATCTGTGATATTGCTAATCCAGCCTCGCTTATGAAATGGCTAAACAGGCAACAG
TTGTCCTCAATTGCGTAGGACCATATCGGTTTTATGGAGAACCTGTAATAAAAGCATGTATTGAAAATGG
AGCCAGTTGTATCGACATCAGTGGAGAACCTCAGTTTCTGGAACCTAATGCAACTGAAGTATCATGAGAAA
GCTGCAGACAAAGGGTTATATCATTGGAAGCAGCGGCTTGGACTCCATTCCAGCAGATCTGGGAGTAA
TATATACCAGAAAATAAATGAATGGTACTTTGACTGCTGTGAAAGTTTCTGACTATACATTCCAGGACA
TGAGGGGTTGAGCATTATGATGGTACCTGGAAGTCAGCAATTTATGGTTTTGGAGATCAGAGTAATTTG
AGAAAATAAGAAATGTATCAAACTGAAACCTGTCCCGCTCATTGGTCCAAAATGAAGAGAAGGTGGC
CAATTTCTTATTGTCGGAACTCAAAGTTATTCCATTCTTTTATGGGATCTGATGTGTCTGTTGTAAG
GAGGACTCAACGTTACTTGTATGAAAATTTAGAGGAATCACCAGTTTCAAGTATGCTGCGTATGAACTGTG
GGAGGCATCACCTCTGTTATTAAGCTGATGTTGCAGGACTTTTCTTTTGTCTTTGTGAGGTTTGGAA
TTGGAAGGCAACTTCTATAAAATTTCCCATGGTCTTCTCCTTTGGCTATTTTTCAAACAAGGCCAAC
ACAAAAACAGATTGATGCTGCCTCATTACGCTGACATCTTTGGTCAAGGATACAGCCGAGGCACTGGT
ACAGATAAGAACAACCAATATCAAAATTTGACTCAGGTGAAAGGACCAGAGGCTGGCTATGTGGCTA
CCCCCATAGCTATGGTTCAGGCAGCCATGACTCTTCTAAGTATGCTTCTCATCTGCCTAAGCGGGCGG
GGTCTTACACCTGGAGCAGCTTTTTCCAAAACAAAGTTGATTGACAGACTCAACAAACCGGTATTGAG
TTTAGTGTATTAGCAGCTCTGAAGTC

ACGCGTACGCGGCCGCTCGAGCAGAACTCATCTCAGAAGAGGATCTGGCAGCAATGATATCCTGGATT
ACAAGGATGACGACGATAAGGTTTAA

Protein Sequence:

>RC206072 protein sequence
Red=Cloning site Green=Tags(s)

MATEQRPFHLVVFASGFTGQFVTEEVAREQVDPERSRPLWAVAGRSREKLQRVLEKAALKLGRPTLSS
EVGIIICDIANPASLDEMAKQATVVLNCGPYRFYGEPIKACIENGASCIDISGEPQFLELMQLKYHEK
AADKGVYIIGSSGFDSIPADLGVYTRNKMNGTLTAVESFLTIIHSGHEGLSIHDGTWKSAYGFGDQSNL
RKLNRVSNLKPVPLIGPKLRRWPISYCRELKGYSIPFMGSDVSVRRRTQRYLYENLEESPVQYAAAYTV
GGITSVIKLMFAGLFFLVRFVIGRQLLIKFPWFFSFGYFSKQGPTQKQIDAASFLLTFFGQGYSRGTG
TDKNKPNIKICTQVKGPEAGYVATPIAMVQAAMTLLSDASHLPKAGGVFPGAAFSKTKLIDRLNKHGIE
FSVISSEV

TRTRPLEQKLISEEDLAANDILDYKDDDDKV

Chromatograms:

https://cdn.origene.com/chromatograms/mk6535_g07.zip

Restriction Sites:

SgfI-MluI

Cloning Scheme:


ACCN: NM_016002

ORF Size: 1287 bp

OTI Disclaimer: The molecular sequence of this clone aligns with the gene accession number as a point of reference only. However, individual transcript sequences of the same gene can differ through naturally occurring variations (e.g. polymorphisms), each with its own valid existence. This clone is substantially in agreement with the reference, but a complete review of all prevailing variants is recommended prior to use. [More info](#)

OTI Annotation: This clone was engineered to express the complete ORF with an expression tag. Expression varies depending on the nature of the gene.

Components: The ORF clone is ion-exchange column purified and shipped in a 2D barcoded Matrix tube containing 10ug of transfection-ready, dried plasmid DNA (reconstitute with 100 ul of water).

- Reconstitution Method:**
1. Centrifuge at 5,000xg for 5min.
 2. Carefully open the tube and add 100ul of sterile water to dissolve the DNA.
 3. Close the tube and incubate for 10 minutes at room temperature.
 4. Briefly vortex the tube and then do a quick spin (less than 5000xg) to concentrate the liquid at the bottom.
 5. Store the suspended plasmid at -20°C. The DNA is stable for at least one year from date of shipping when stored at -20°C.

RefSeq: [NM_016002.3](#)

RefSeq Size: 2482 bp

RefSeq ORF: 1290 bp

Locus ID: 51097

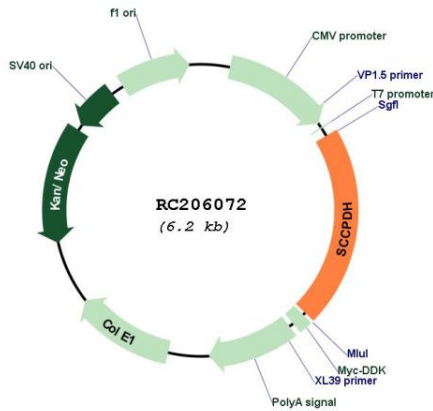
UniProt ID: [Q8NBX0](#)

Cytogenetics: 1q44

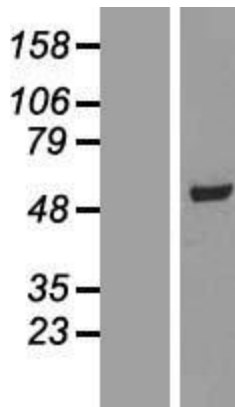
Protein Families: Transmembrane

MW: 47.2 kDa

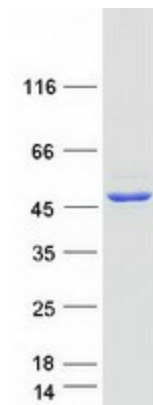
Product images:



Circular map for RC206072



Western blot validation of overexpression lysate (Cat# [LY414247]) using anti-DDK antibody (Cat# [TA50011-100]). Left: Cell lysates from untransfected HEK293T cells; Right: Cell lysates from HEK293T cells transfected with RC206072 using transfection reagent MegaTran 2.0 (Cat# [TT210002]).



Coomassie blue staining of purified SCCPDH protein (Cat# [TP306072]). The protein was produced from HEK293T cells transfected with SCCPDH cDNA clone (Cat# RC206072) using MegaTran 2.0 (Cat# [TT210002]).