

Product datasheet for **RC206070**

KCTD17 (NM_024681) Human Tagged ORF Clone

Product data:

Product Type:	Expression Plasmids
Product Name:	KCTD17 (NM_024681) Human Tagged ORF Clone
Tag:	Myc-DDK
Symbol:	KCTD17
Mammalian Cell Selection:	Neomycin
Vector:	pCMV6-Entry (PS100001)
E. coli Selection:	Kanamycin (25 ug/mL)
ORF Nucleotide Sequence:	>RC206070 ORF sequence Red=Cloning site Blue=ORF Green=Tags(s)

TTTTGTAATACGACTCACTATAGGGCGGCCGGGAATTCGTCGACTGGATCCGGTACCGAGGAGATCTGCC
GCC**CGATCGCC**

ATGAGGATGGAGGCCGGGGAGGCAGCGCCCGCGGGGGCGGGCGCCGCGCAGGCGGCTGGGGCA
AGTGGGTGCGGCTCAACGTGGGGGCACGGTGTTCCTGACCACCCGCGAGACGCTGTGCCGCGAGCAGAA
GTCCTTCTCAGCCGCTGTGCCAGGGGAAGAGCTGCAGTCGGACCGGGATGAGACCGGGGCTACCTC
ATTGACCGTGACCCACCTACTTCGGGCCATCCTGAACCTCCTCCGGCATGGCAAGCTGGTGTGGACA
AGGACATGGCTGAGGAGGGGTCTGGAGGAAGCCGAGTTCTACAACATCGGCCCGCTGATCCGCATCAT
CAAAGACCGGATGGAAGAGAAGGACTACACGGTCACCCAGGTCCCACCCAAGCATGTGTACCGCGTGCTG
CAGTGCCAGGAGGAGGAGCTCACGCAAATGGTCTCCACCATGTCTGATGGCTGGCGCTTCGAGCAGCTGG
TGAACATCGGCTCCTCTACAACCTACGGCAGCGAGGACCAGGCAGAGTTCTGTGTGTGGTGTCCAAGGA
GCTCCACAGCACCCAAACGGGCTGAGCTCAGAGTCCAGCCGCAAAACCAAGAGCACGGAGGAGCAGCTG
GAGGAGCAGCAGCAGGAGGAGGAGGTGGAGGAGGTGGAGGTGGAACAGGTGCAGGTGGAGGCAGATG
CACAGGAGAAAGTTCCCGTCCGCACCCTCTCAGACCTGAGGCTGAGCTGCAGTGAGGGCTTCTCCTCG
GCCCTCGCCCGCCCCAGAGCTGCCATCCCTGCTTTACAAGCCAGAGGCACCCGGATGTGAGGCCCA
GATCACCTCCAGGACTTGGGGTCCCATC

ACGCGTACGCGGCCGCTCGAGCAGAACTCATCTCAGAAGAGGATCTGGCAGCAAATGATATCCTGGATT
ACAAGGATGACGACGATAAGGTTTAA



Protein Sequence: >RC206070 protein sequence
 Red=Cloning site Green=Tags(s)

MRMEAGEAAPPAGAGGRAAGGWGKWRNLNVGGTVFLTTRQTLCREQKSFLSRLCQGEELQSDRDETAYL
 IDRDPTYFGPILNFLRHGKLVLDKDMAEEGVLEAEFYNIQPLIRIIRIKDRMEEKDYVTQVPPKHVYRVL
 QCQEEELTQMVSTMSDGWRFEQLVNISSYNYGSEDQAEFLCVVSKELHSTPNGLSSESSRKTSTEEQL
 EEQQQQEEVEVEVEVQVQVEADAQEKGSRPHPLRPEAELAVRASPRPLARPQSCHPCCYKPEAPGCEAP
 DHLQGLGVPI

TRTRPLEQKLISEEDLAANDILDYKDDDDKVV

Chromatograms: https://cdn.origene.com/chromatograms/mk6317_c12.zip

Restriction Sites: SgfI-MluI

Cloning Scheme:

Cloning sites used for ORF Shuttling:



* The last codon before the Stop codon of the ORF

ACCN: NM_024681

ORF Size: 870 bp

OTI Disclaimer: The molecular sequence of this clone aligns with the gene accession number as a point of reference only. However, individual transcript sequences of the same gene can differ through naturally occurring variations (e.g. polymorphisms), each with its own valid existence. This clone is substantially in agreement with the reference, but a complete review of all prevailing variants is recommended prior to use. [More info](#)

OTI Annotation: This clone was engineered to express the complete ORF with an expression tag. Expression varies depending on the nature of the gene.

Components: The ORF clone is ion-exchange column purified and shipped in a 2D barcoded Matrix tube containing 10ug of transfection-ready, dried plasmid DNA (reconstitute with 100 ul of water).

Reconstitution Method:

1. Centrifuge at 5,000xg for 5min.
2. Carefully open the tube and add 100ul of sterile water to dissolve the DNA.
3. Close the tube and incubate for 10 minutes at room temperature.
4. Briefly vortex the tube and then do a quick spin (less than 5000xg) to concentrate the liquid at the bottom.
5. Store the suspended plasmid at -20°C. The DNA is stable for at least one year from date of shipping when stored at -20°C.

RefSeq: [NM_024681.1](#), [NP_078957.1](#)

RefSeq Size: 1707 bp

RefSeq ORF: 873 bp

Locus ID: 79734

UniProt ID: [Q8N5Z5](#)

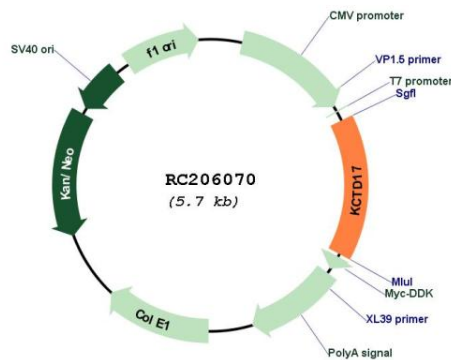
Cytogenetics: 22q12.3

Protein Families: Ion Channels: Other

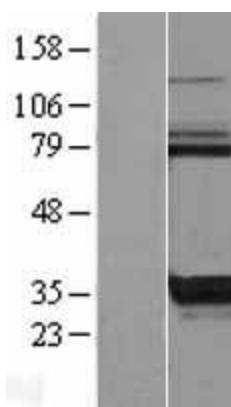
MW: 32.5 kDa

Gene Summary: This gene encodes a protein that belongs to a conserved family of potassium channel tetramerization domain (KCTD)-containing proteins. The encoded protein functions in ciliogenesis by acting as a substrate adaptor for the cullin3-based ubiquitin-conjugating enzyme E3 ligase, and targets trichoplein, a keratin-binding protein, for degradation via polyubiquitylation. A mutation in this gene is associated with autosomal dominant myoclonic dystonia 26. [provided by RefSeq, Nov 2016]

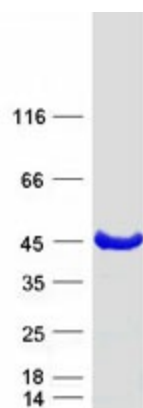
Product images:



Circular map for RC206070



Western blot validation of overexpression lysate (Cat# [LY411141]) using anti-DDK antibody (Cat# [TA50011-100]). Left: Cell lysates from untransfected HEK293T cells; Right: Cell lysates from HEK293T cells transfected with RC206070 using transfection reagent MegaTran 2.0 (Cat# [TT210002]).



Coomassie blue staining of purified KCTD17 protein (Cat# [TP306070]). The protein was produced from HEK293T cells transfected with KCTD17 cDNA clone (Cat# RC206070) using MegaTran 2.0 (Cat# [TT210002]).