

Product datasheet for **RC206066**

EDG2 (LPAR1) (NM_057159) Human Tagged ORF Clone

Product data:

Product Type:	Expression Plasmids
Product Name:	EDG2 (LPAR1) (NM_057159) Human Tagged ORF Clone
Tag:	Myc-DDK
Symbol:	EDG2
Synonyms:	edg-2; EDG2; Gpcr26; LPA1; Mrec1.3; rec.1.3; vzg-1; VZG1
Mammalian Cell Selection:	Neomycin
Vector:	pCMV6-Entry (PS100001)
E. coli Selection:	Kanamycin (25 ug/mL)
ORF Nucleotide Sequence:	>RC206066 ORF sequence Red=Cloning site Blue=ORF Green=Tags(s)

TTTTGTAATACGACTCACTATAGGGCGGCCGGAATTCGTCGACTGGATCCGGTACCGAGGAGATCTGCC
GCC**CGATCGCC**

ATGGCTGCCATCTCTACTTCCATCCCTGTAATTTACAGCCCCAGTTCACAGCCATGAATGAACCACAGT
GCTTCTACAACGAGTCCATTGCCTTCTTTTATAACCGAAGTGGAAAGCATCTTGCCACAGAATGGAACAC
AGTCAGCAAGCTGGTATGGGACTTGGAACTCACTGTTTGTATCTTCATCATGTTGGCCAACCTATTGGTC
ATGGTGGCAATCTATGTCAACCGCCGCTCCATTTTCTATTTATTACCTAATGGCTAATCTGGCTGCTG
CAGACTTCTTTGCTGGGTTGGCCTACTTCTATCTCATGTTCAACACAGGACCCAATACTCGGAGACTGAC
TGTTAGCACATGGCTCCTTCGTCAGGGCCTCATTGACACCAAGCCTGACGGCATCTGTGGCCAACCTACTG
GCTATTGCAATCGAGAGGCACATTACGGTTTTCCGCATGCAGCTCCACACACGGATGAGCAACCGCGGG
TAGTGGTGGTCATTGTGGTCATCTGGACTATGGCCATCGTTATGGGTGCTATACCCAGTGTGGGCTGGAA
CTGTATCTGTGATATTGAAAATTGTTCCAACATGGCACCCTCTACAGTGACTCTTACTTAGTCTTCTGG
GCCATTTCAACTTGGTGACCTTTGTGGTAATGGTGGTTCTCTATGCTCACATCTTTGGCTATGTTCCGC
AGAGGACTATGAGAAATGTCTCGGCATAGTTCTGGACCCCGCGGAATCGGGATACCATGATGAGTCTTCT
GAAGACTGTGGTCATTGTGCTTGGGCTTTATCATCTGCTGGACTCCTGGATTGGTTTTGTTACTTCTA
GACGTGTGCTGTCCACAGTGCAGCTGCTGGCCTATGAGAAATTTCTTCTCCCTTGCTGAATTCACAT
CTGCCATGAACCCATCATTTACTCTACCGCAGCAAAGAAATGAGCGCCACCTTTAGGCAGATCCTCTG
CTGCCAGCGCAGTGAGAACCCACCGGCCCCACAGAAAGGCTCAGACCGCTCGGCTTCTCCCTCAACCAC
ACCATCTTGGCTGGAGTTCACAGCAATGACCACTCTGTGGTT

ACGCGTACGCGGCCGCTCGAGCAGAAACTCATCTCAGAAGAGGATCTGGCAGCAATGATATCCTGGATT
ACAAGGATGACGACGATAAGGTTAA



[View online »](#)

Protein Sequence: >RC206066 protein sequence
Red=Cloning site Green=Tags(s)

MAAISTSIPVISQPQFTAMNEPQCFYNESIAFFYNRSGKHLATEWNTVSKLVMGLGITVCIFIMLANLLV
 MVAIYVNRRFHFPIYYLMANLAAADFFAGLAYFYLMFNTGPNTRRLLTVSTWLLRQGLIDTSLTASVANLL
 AIAIERHITVFRMQLHTRMSNRRVVVVIVVIWTMAIVMGAIPVSGWNCIDIENCSNMAPLYSDSYLVFW
 AIFNLVTFVVMVLYAHIFGYVRQRTMRMSRHSSGPRRNRDTMMSLLKTVVIVLGAFFICWTPGLVLLLL
 DVCCPQCDVLAIEKFLLLAEFNSAMNPIIYSYRDKEMSATFRQILCCQRSENPTGPTEGSDRSASSLNH
 TILAGVHSDHSVV

TRTRPLEQKLISEEDLAANDILDYKDDDDKV

Chromatograms: https://cdn.origene.com/chromatograms/mk6320_f05.zip

Restriction Sites: SgfI-MluI

Cloning Scheme:



* The last codon before the Stop codon of the ORF

ACCN: NM_057159

ORF Size: 1092 bp

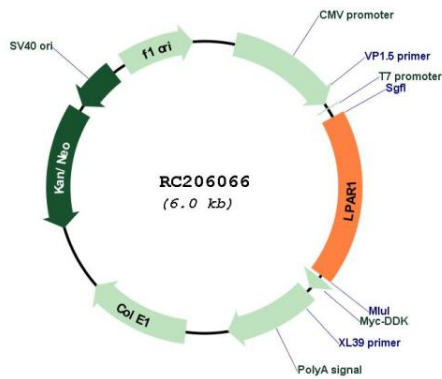
OTI Disclaimer: The molecular sequence of this clone aligns with the gene accession number as a point of reference only. However, individual transcript sequences of the same gene can differ through naturally occurring variations (e.g. polymorphisms), each with its own valid existence. This clone is substantially in agreement with the reference, but a complete review of all prevailing variants is recommended prior to use. [More info](#)

OTI Annotation: This clone was engineered to express the complete ORF with an expression tag. Expression varies depending on the nature of the gene.

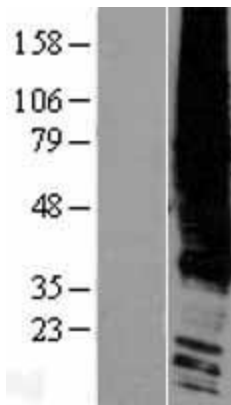
Components: The ORF clone is ion-exchange column purified and shipped in a 2D barcoded Matrix tube containing 10ug of transfection-ready, dried plasmid DNA (reconstitute with 100 ul of water).

Reconstitution Method:	<ol style="list-style-type: none">1. Centrifuge at 5,000xg for 5min.2. Carefully open the tube and add 100ul of sterile water to dissolve the DNA.3. Close the tube and incubate for 10 minutes at room temperature.4. Briefly vortex the tube and then do a quick spin (less than 5000xg) to concentrate the liquid at the bottom.5. Store the suspended plasmid at -20°C. The DNA is stable for at least one year from date of shipping when stored at -20°C.
RefSeq:	NM_057159.4
RefSeq Size:	3182 bp
RefSeq ORF:	1095 bp
Locus ID:	1902
UniProt ID:	Q92633
Cytogenetics:	9q31.3
Domains:	7tm_1
Protein Families:	Druggable Genome, GPCR, Transmembrane
Protein Pathways:	Gap junction, Neuroactive ligand-receptor interaction
MW:	41.1 kDa
Gene Summary:	The integral membrane protein encoded by this gene is a lysophosphatidic acid (LPA) receptor from a group known as EDG receptors. These receptors are members of the G protein-coupled receptor superfamily. Utilized by LPA for cell signaling, EDG receptors mediate diverse biologic functions, including proliferation, platelet aggregation, smooth muscle contraction, inhibition of neuroblastoma cell differentiation, chemotaxis, and tumor cell invasion. Many transcript variants encoding a few different isoforms have been identified for this gene. [provided by RefSeq, Oct 2020]

Product images:



Circular map for RC206066



Western blot validation of overexpression lysate (Cat# [LY409261]) using anti-DDK antibody (Cat# [TA50011-100]). Left: Cell lysates from untransfected HEK293T cells; Right: Cell lysates from HEK293T cells transfected with RC206066 using transfection reagent MegaTran 2.0 (Cat# [TT210002]).