

## Product datasheet for **RC206062**

### LTC4S (NM\_145867) Human Tagged ORF Clone

#### Product data:

**Product Type:** Expression Plasmids  
**Product Name:** LTC4S (NM\_145867) Human Tagged ORF Clone  
**Tag:** Myc-DDK  
**Symbol:** LTC4S  
**Mammalian Cell Selection:** Neomycin  
**Vector:** pCMV6-Entry (PS100001)  
**E. coli Selection:** Kanamycin (25 ug/mL)  
**ORF Nucleotide Sequence:** >RC206062 ORF sequence  
Red=Cloning site Blue=ORF Green=Tags(s)

TTTTGTAATACGACTCACTATAGGGCGGCCGGAATTCGTCGACTGGATCCGGTACCGAGGAGATCTGCC  
GCC**CGATCGCC**

ATGAAGGACGAGGTAGCTCTACTGGCTGCTGCACCCCTCTGGGAGTCCTGCTGCAAGCCTACTTCTCCC  
TGCAGGTGATCTCGGCGCGCAGGGCCTTCCGCGTGTCCGCCCGCTCACCACCGGCCACCCGAGTTCGA  
GCGCGTACCGAGCCAGGTGAAGTGCAGCGAGTACTCCCGCTGTTCTCGCCAGCTCTGGGTGCGC  
GGCATCTTCTTTCATGAAGGGGCGCGGCCCTGTGCGGCTGGTCTACCTGTTGCGCGCCTCCGCTACT  
TCCAGGGCTACGCGCGCTCCGCGCAGCTCAGGCTGGCACCGCTGTACGCGAGCGCGCGCCCTCTGGCT  
GCTGGTGGCGCTGGCTGCGCTCGGCTGCTCGCCACTTCCCGGCCGCGCTGCGCGCCGCGCTCCTC  
GGACAGCTCCGGACGCTGCTGCCGTGGCC

**ACGCGT**ACGCGGCCGCTCGAGCAGAAACTCATCTCAGAAGAGGATCTGGCAGCAAATGATATCCTGGATT  
ACAAGGATGACGACGATAAGGTTTAA

**Protein Sequence:** >RC206062 protein sequence  
Red=Cloning site Green=Tags(s)

MKDEVALLAAVTLGVLQAYFSLQVISARRAFRVSPPLTTGPPEFERVYRAQVNCSEYFPLFLATLWVA  
GIFFHEGAAALCGLVYLFARLRYFQGYARSAQLRLAPLYASARALWLLVALAALGLLAHFLPAALRAALL  
GQLRTLTPWA

**TRTRPLEQKLI**SEEDLAANDILDYKDDDDKV

**Chromatograms:** [https://cdn.origene.com/chromatograms/mk6234\\_d06.zip](https://cdn.origene.com/chromatograms/mk6234_d06.zip)

**Restriction Sites:** SgfI-MluI



[View online >](#)

**Cloning Scheme:**


**ACCN:** NM\_145867

**ORF Size:** 450 bp

**OTI Disclaimer:** The molecular sequence of this clone aligns with the gene accession number as a point of reference only. However, individual transcript sequences of the same gene can differ through naturally occurring variations (e.g. polymorphisms), each with its own valid existence. This clone is substantially in agreement with the reference, but a complete review of all prevailing variants is recommended prior to use. [More info](#)

**OTI Annotation:** This clone was engineered to express the complete ORF with an expression tag. Expression varies depending on the nature of the gene.

**Components:** The ORF clone is ion-exchange column purified and shipped in a 2D barcoded Matrix tube containing 10ug of transfection-ready, dried plasmid DNA (reconstitute with 100 ul of water).

- Reconstitution Method:**
1. Centrifuge at 5,000xg for 5min.
  2. Carefully open the tube and add 100ul of sterile water to dissolve the DNA.
  3. Close the tube and incubate for 10 minutes at room temperature.
  4. Briefly vortex the tube and then do a quick spin (less than 5000xg) to concentrate the liquid at the bottom.
  5. Store the suspended plasmid at -20°C. The DNA is stable for at least one year from date of shipping when stored at -20°C.

**RefSeq:** [NM\\_145867.1](#), [NP\\_665874.1](#)

**RefSeq Size:** 680 bp

**RefSeq ORF:** 453 bp

**Locus ID:** 4056

**UniProt ID:** [Q16873](#)

**Cytogenetics:** 5q35.3

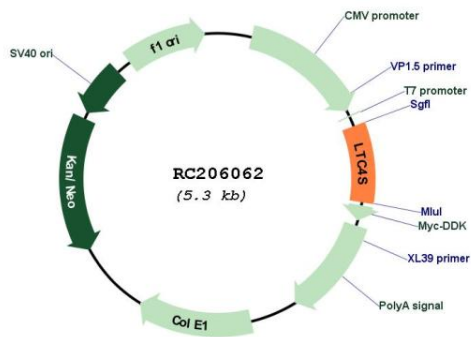
**Protein Families:** Druggable Genome, Transmembrane

**Protein Pathways:** Arachidonic acid metabolism, Metabolic pathways

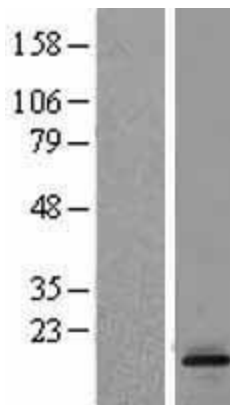
**MW:** 16.5 kDa

**Gene Summary:** The MAPEG (Membrane Associated Proteins in Eicosanoid and Glutathione metabolism) family includes a number of human proteins, several of which are involved the production of leukotrienes. This gene encodes an enzyme that catalyzes the first step in the biosynthesis of cysteinyl leukotrienes, potent biological compounds derived from arachidonic acid. Leukotrienes have been implicated as mediators of anaphylaxis and inflammatory conditions such as human bronchial asthma. This protein localizes to the nuclear envelope and adjacent endoplasmic reticulum. [provided by RefSeq, Jul 2008]

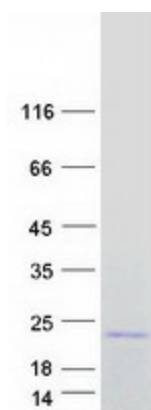
**Product images:**



Circular map for RC206062



Western blot validation of overexpression lysate (Cat# [LY407849]) using anti-DDK antibody (Cat# [TA50011-100]). Left: Cell lysates from untransfected HEK293T cells; Right: Cell lysates from HEK293T cells transfected with RC206062 using transfection reagent MegaTran 2.0 (Cat# [TT210002]).



Coomassie blue staining of purified LTC4S protein (Cat# [TP306062]). The protein was produced from HEK293T cells transfected with LTC4S cDNA clone (Cat# RC206062) using MegaTran 2.0 (Cat# [TT210002]).