

Product datasheet for RC206061

DENN (MADD) (NM_130472) Human Tagged ORF Clone

Product data:

Product Type:	Expression Plasmids
Product Name:	DENN (MADD) (NM_130472) Human Tagged ORF Clone
Tag:	Myc-DDK
Symbol:	DENN
Synonyms:	DEEAH; DENN; IG20; NEDDISH; RAB3GEP; RabGEF
Mammalian Cell Selection:	Neomycin
Vector:	pCMV6-Entry (PS100001)
E. coli Selection:	Kanamycin (25 ug/mL)
ORF Nucleotide Sequence:	>RC206061 ORF sequence Red=Cloning site Blue=ORF Green=Tags(s)

TTTTGTAATACGACTCACTATAGGGCGCCGGGAATTCGTCGACTGGATCCGGTACCGAGGAGATCTGCC
GCC**CGATCGCC**

ATGGTGCAAAAGAAGAAGTTCTGTCTCGTTACTTGACTATCTAGTGATCGTAGGGGCCAGGCACCCGA
GCAGTGATAGCGTGGCCAGACTCCTGAATTGCTACGGCGATACCCCTTGAGAGGATCACACTGAGTTTCC
CCTGCCCCAGATGTAGTGTCTTCTGCCAGCCGAGGGCTGCCTGAGCGTGCCGAGCGGCGCATGAGC
CTTCGGGATGATACCTCTTTGTCTTCCACCTCACTGACAAGGACTGGAGTCACGCGATATGGCATCT
GTGTTAACTTCTACCGCTCCTTCCAAAAGCGAATCTCTAAGGAGAAGGGGAAGGTGGGCAGGGTCCCC
TGGGAAGGAAGGAACCCATGCCACCTGTGCCTCAGAAGAGGGTGGCACTGAGAGCTCAGAGAGTGGCTCA
TCCCTGCAACCTCTCAGTGTGACTCTACCCCTGATGTGAACCACTCTCCTCGGGCAAACGCCGGGCCA
AGGCGGGGAGCCGCTCCCGCAACAGTACTCTCACGTCCCTGTGCGTGCTCAGCCACTACCCCTTCTTCTC
CACCTCCGAGAGTGTGTTGATACTCTCAAGCGCTGGTGGACTGCTGTAGTGAGCGCCTTCTGGCAAG
AACTGGGCATCCCTCGAGGCGTACAAAGGACACCATGTGGCGGATCTTTACTGGATCGCTGCTGGTAG
AGGAGAAGTCAAGTGCCCTTCTGCATGACCTTCGAGAGATTGAGGCGTGGATCTATCGATTGCTGCGCTC
CCCAGTACCCGCTCTGGGCAGAAGCGAGTAGACATCGAGGTCCTACCCCAAGAGCTCCAGCCAGCTCTG
ACCTTTGCTCTTCCAGACCCATCTCGATTACCCCTAGTGGATTCCCACTGCACCTTCCCTTGGAACTTC
TAGGTGTGGACGCTGTCTCCAGGTGCTAACCTGCATTCTGTTAGAGCACAAGGTGGTGCTACAGTCCCG
AGACTACAATGCACTCTCCATGTCTGTGATGGCATTCTGGCAATGATCTACCCACTGGAATATATGTTT
CCTGTCAATCCCGCTGCTACCCACCTGCATGGCATCAGCAGAGCAGCTGCTGTTGGCTCCAACCCCGTACA
TCATTGGGGTTCCTGCCAGTCTTCTCTACAACTGGACTTCAAAATGCCTGATGATGTATGGCTAGT
GGATCTGGACAGCAATAGGGTATTGCCCCACCAATGCAGAAGTGTGCCTATCCTGCCAGAACCAGAA
TCACTAGAGCTGAAAAGCATTTAAAGCAGGCCTTGGCCAGCATGAGTCTCAACCCAGCCCATCTCA
ATCTGGAGAAATTCATGAGGGCCAGGAGATCCCCCTTCTCTTGGGAAGGCTTCTAATGACCTGCAGTC
CACACCGTCCACTGAATCAACCACTCATCTATGGCAATGATGTGGATTCTGTGGATGTTGCAACCAGG



GTTGCCATGGTACGGTCTTCAATTCGCCAACGTGCTGCAGGGATTCAGATGCACACGCGTACCCTGC
 GCCTCTTTCTCGGCCTGTGGTAGCTTTTCAAGCTGGCTCCTTTCTAGCCTCACGTCCCCGGCAGACTCC
 TTTTGGCGAGAAATTGGCCAGGACTCAGGCTGTGGAGTACTTTGGGGAATGGATCCTTAACCCCAAC
 TATGCCTTTTACGCAATTCAACAATATGTTTGTATCCAGCCCTGATTGGTGACAAGCCAAAGTGGTATG
 CTCATCAGCTGCAGCCTATCCACTATCGCGTCTATGACAGCAATCCCAGCTGGCTGAGGCCCTGAGTGT
 ACCACCAGACGGGACTCTGACTCCGAACCTACTGATGATAGTGGCAGTATAGTATGGATTATGACGAT
 TCAAGCTCTTCTACTCCTCCCTTGGTGACTTTGTGACTGAAATGATGAAATGTGACATTAATGGTGATA
 CTCCCAATGTGGACCCTTGACACATGCAGCACTGGGGGATGCCAGCGAGGTGGAGATTGACGAGCTGCA
 GAATCAGAAGGAAGCAGAAGAGCCTGGCCAGACAGTGAAGAACTCTCAGGAAAACACCCCACTGCCTCC
 AGCTCTAGCACCACAGCCAGCAGCAGCCCAAGCACTGTATCCACGGAGCCAACTCTGAACCTGTGACT
 CTACGGAGATGGATGATAAGGCAGCAGTAGGCGTCTCCAAGCCCTCCTTCCGTGCCTCCAGCATTGG
 CAAATCGAACGTGGACAGACGTGAGCAGAAATGGAGAGGGGGCTCAAAGCTGCTGCGGCCAACAGC
 TTGAGACTGGCAAGTACTCAGATGCAGAGTCACTCTCGGGCAAGCTCTCCAACTCCACCGTCTCCA
 ACACCAGCACCAGGGCTTCGGGGGCATCATGTCTTTTCCAGCAGCCTCTATCGGAACCACAGTACCAG
 CTTTCAAGCTCAACTGCCCACAAAGGTGCCGAGAGAAGGCCACGCCCTTCCCCAGTCTG
 AAAGGAAACAGGAGGGCTTAGTGGATCAGAAGTATCTGTATTAAACACAGCCCAACAGTGAAGGAGG
 AACCTCCATCACCCAGGGTCGATCCAGCAATTCTAGTGAAGCAGCAGTTCCTGAAGGAGGTGGTGCA
 CAGCGTGTGGACGGCCAGGGAGTTGGCTGGCTCAACATGAAAAGGTGCGCGGGCTGCTGGAGAGCGAG
 CAGCTGCGAGTCTTTGTCTGAGCAAGTGAACCGCATGGTGCAGTCAAGGACGATGCCCGGCAGGACA
 TCATCCCGGATGTGGAGATCAGTCGGAAGGTGTACAAGGGAATGTTAGACCTCCTCAAGTGTACAGTCT
 CAGCTTGGAGCAGTCTATGCCACGCGGGTCTGGGTGGCATGGCCAGCATCTTTGGGTTTTTGGAGATT
 GCCCAGCCCACTACTATAGTAAAGAACCAGACAAGCGGAAGAGAAGTCCAACAGAAAGTGAATAATCC
 CAGTTGGCAAGGATCCTGGCCTAGCTGGCGGGGGACCCAAAGGCTATGGCACAACTGAGATTCCACA
 ACTGGGACCTCGGGCACCAAGTCCACAGGAAAGGGTCCCTAAGGAACTGGACACCAGAAGTTTAAAGGAA
 GAAAATTTTATAGCATCTATTGGCCTGAAGTAACTCAAACCTGTCTTTGACCTTGGTGAGACAGAGGAGA
 AAAAGTCCCAGATCAGCGCAGACAGTGGTGTGAGCCTGACGTCTAGTTCCCAGAGGACTGATCAAGACTC
 TGTCATCGGCGTGAGTCCAGCTGTTATGATCCGCAAGTCAAGTCAAGGATTCTGAAGTTAGCACCCTGAGT
 AATAGCTCTGGAGAGACCCTTGGAGCTGACAGTACTTGGAGCAGCAATGCAGGTGATGGACCAGTGGCG
 AGGGCAGTGTACCTGGCAAGTCTCGGGGCACTTTGTCTGATAGTGAATTTAGACCAACTCTGCCAC
 AAGCACTATCTTTGGTAAAGCCACAGCTTGAAGCCAAGCATAAAGGAGAAGCTGGCAGGACGCCCACT
 CGTACTTCTGAAGATGTGAGCCAGCAGTCTATCTCTATGAGGGACTCCTAGGCAAGAGCGTTCTACTT
 TATGGGACCAAAATGCAATTCTGGGAAGATGCCTTCTTAGATGCTGTGATGTTGGAGAGAGAAGGGATGG
 TATGGACCAGGGTCCCCAGGAAATGATCGACAGGTACCTGTCCCTTGGAGAACATGACCCGGAAGCGCCTG
 GAAGATGATGAAGATCGCTTGTGGCCACACTTCTGCACAACCTCATCTCCTACATGCTGCTGATGAAGG
 TAAATAAGAATGACATCCGCAAGAAGGTGAGGCGCCTAATGGGAAAGTCCGACATTGGGCTTGTGTACAG
 CCAGCAAAATCAATGAGGTGCTTGTGATCAGCTGGCGAACCTGAATGGACGCGATCTCTATCTGGTCCAGT
 GGCAGCCGGCAGATGAAGAAGCAGACATTTGTGGTACATGCAGGGACAGATACAAACGGAGATATCTTTT
 TCATGGAGGTGTGCGATGACTGTGTGGTGTGCGTAGTAAATCGGAACAGTGTATGAGCGCTGGTGGTA
 CGAGAAGCTCATCAACATGACCTACTGTCCCAAGACGAAGGTGTTGTGCTTGTGGCGTAGAAATGGCTCT
 GAGACCCAGCTCAACAAGTTCTATACTAAAAAGTGTGGGAGCTGTACTACTGTGTGAAGGACAGCATGG
 AGCGCGCTGCCGCCGACAGCAAAAGCATCAAACCCGGACCTGAATTGGGTGGCGAGTTCCCTGTGACGGA
 CCTGAAGACTGGTGGGGTGGCCTGCTGCAGGTGACCCTGGAAGGGATCAACCTCAAATTCATGCACAAT
 CAGGTTTTTATAGAGCTGAATCACATTAATAAAGTGAATACAGTTTCGAGGCGTCTTTGTCTGGAGGAAT
 TTGTTCTGAAATTAAGAAGTGGTGGCCACAAGTACAAGACACCAATGGCCACGAAATCTGCTACTC
 CGTATTATGTCTTCTCGTACGTGGCTGCAGTTCATAGCAGTGAAGGATCTCAGAACCCCGCCCGG
 CCTGTCTTAGC

AGCGGACCGACGCGTACGCGCCGCTCGAGCAGAACTCATCTCAGAAGAGGATCTGGCAGCAAATGATATCC
 TGGATTACAAGGATGACGACGATAAGGTTTAA

Protein Sequence: >RC206061 protein sequence
 Red=Cloning site Green=Tags(s)

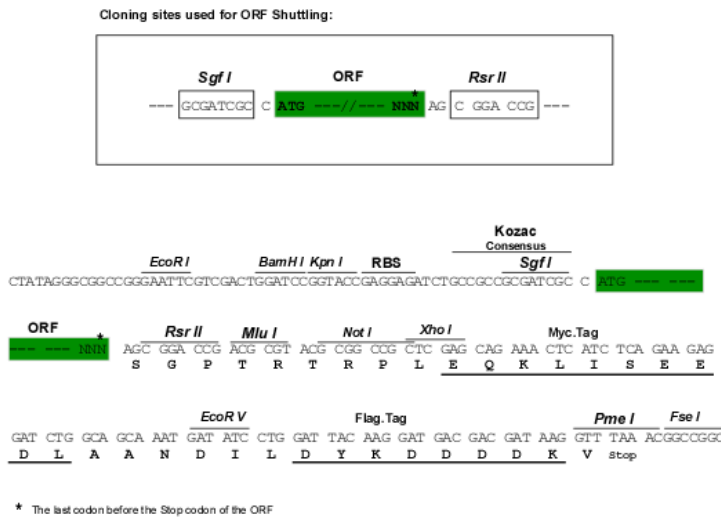
```

MVQKKKFCPRLLDYLVIIGARHPSSDSVAQTEPELLRRYPLEDHTEFPLPPDVVFFCQPEGCLSVRQRMS
LRDDTSFVFTLTDKDTGVTRYGICVNFYRSFQKRISKEKGEAGSRGKEGTHATCASEEGGTESESGS
SLQPLSADSTPDVNQSPRGKRRAKAGSRSRNSTLTSCLVLSHYPPFFSTFRECLYTLKRLVDCSERLLGK
KLGIPRGVQRDTPMWRIFTGSLLEEKSSALLHDLREIEAWIYRLLRSPVPVSGQKRVDIQELQPAL
TFALPDPSPRFTLVDFPLHLPLELLGVDACLQVLCILLEHKVVLLQSRDYNALSMSVMAFVAMIYPLEYMF
PVIPLLPCTMASAEQLLLAPTPYIIGVPASFLLYKLDKMPDDVWLVDLDSNRVIAPTNAEVLPIIPEPE
SLELEKHLKQALASMSLNTQPIILNLEKFHEGQEIPLLLGRPSNDLQSTPSTEFNPLIYGNVDVSDVATR
VAMVRFNSANVLQGFQMHTRTLRLLFPRPVVAFQAGSFLASRPRQTPFAEKLARTQAVEYFGWILNPTN
YAFQRIHNNMFDPALIGDKPKWYAHQLQPIHYRVYDSNSQLAEALSVPPERDSDSEPTDDSGSDSMDYDD
SSSSYSSLGDFVSEMMKCDINGDTPNVDPLTHAALGDASEVEIDELQNQKEAEEPDPSENSQENTPLRS
SSSTTASSPSTVIHGANSEPADSTEMDDKAAVGVSKPLPSVPPSIGKSNVDRRQAEIGEGAQKLLRPNS
LRLASDSDAESDRASSPNSTVSNSTSTEGFGGIMSFASSLYRNHSTSFSLSNLTLPTKGAAREKATPFPSL
KGNRRALVDQSSVIKHSPTVKREPPSQGRSSNSSENQQLKEVVHSLVDGQGVGWLNMKKVGRLLLESE
QLRVFVLSKLNRMVQSEDDARQDIIPDVEISRKYKGMILLKCTVLSLEQSYAHAGLGGMASIFGFLEI
AQTHYYSKEPKRKRSPTESVNTPVGKDPGLAGRGDPKAMAQLRVPQLGPRPASATGKGPKELDTRSLKE
ENFIASIGPEVIKPVFDLGETEEKKSQISADSGVSLTSSSQRTDQDSVIGVSPAVMIRSSSQDSEVSTVS
NSSGETLGADSDLSSNAGDGGGGEGSVHLASSRGTLSDEIETNSATSTIFGKAHSLKPSIKEKLAGSPI
RTSEDEVSRVYLYEGLLGKERSTLWDQMWFEDAFLDVAMLEREGMGMDQGPQEMIDRYLSLGEHDKRL
EDDEDRLATLLHNLISYMLLMKVNKNDIRKKVRRMLMGKSHIGLVYSQQINEVLDQLANLNGRDL SIWSS
GSRHMKKQTFVVHAGDTNGDIFFMVEVCDCCVLRNSNIGTVYERWYWEKLIINMTYCPKTKVLC LWRNGS
ETQLNKFYTKKRELYCYVKDSMERAAARQVSIKPGPELGGEFFVQDLKTGEGGLLQVTLEGINLKFMHN
QVFIELNHIKKCNTVRGVFVLEEFVPEIKEVSHKYKTPMAHEICYSVLC LFSYVAAVHSSEEDLRTPPR
PVSS
    
```

SGP TRTRPLEQKLI SEEDLAANDILDYKDDDDKV

Restriction Sites: SgfI-RsrII

Cloning Scheme:

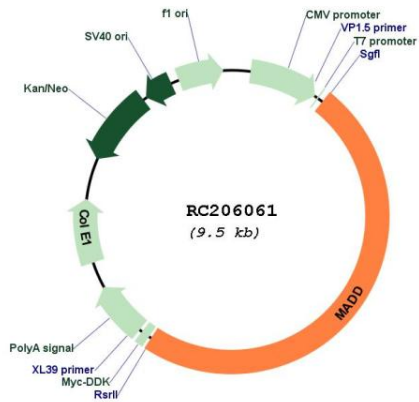


ACCN: NM_130472

ORF Size: 936 bp

OTI Disclaimer:	The molecular sequence of this clone aligns with the gene accession number as a point of reference only. However, individual transcript sequences of the same gene can differ through naturally occurring variations (e.g. polymorphisms), each with its own valid existence. This clone is substantially in agreement with the reference, but a complete review of all prevailing variants is recommended prior to use. More info
OTI Annotation:	This clone was engineered to express the complete ORF with an expression tag. Expression varies depending on the nature of the gene.
Components:	The ORF clone is ion-exchange column purified and shipped in a 2D barcoded Matrix tube containing 10ug of transfection-ready, dried plasmid DNA (reconstitute with 100 ul of water).
Reconstitution Method:	<ol style="list-style-type: none">1. Centrifuge at 5,000xg for 5min.2. Carefully open the tube and add 100ul of sterile water to dissolve the DNA.3. Close the tube and incubate for 10 minutes at room temperature.4. Briefly vortex the tube and then do a quick spin (less than 5000xg) to concentrate the liquid at the bottom.5. Store the suspended plasmid at -20°C. The DNA is stable for at least one year from date of shipping when stored at -20°C.
RefSeq:	NM_130472.3
RefSeq Size:	5725 bp
RefSeq ORF:	4638 bp
Locus ID:	8567
UniProt ID:	Q8WXG6
Cytogenetics:	11p11.2
Protein Families:	Druggable Genome
MW:	171.2 kDa
Gene Summary:	Tumor necrosis factor alpha (TNF-alpha) is a signaling molecule that interacts with one of two receptors on cells targeted for apoptosis. The apoptotic signal is transduced inside these cells by cytoplasmic adaptor proteins. The protein encoded by this gene is a death domain-containing adaptor protein that interacts with the death domain of TNF-alpha receptor 1 to activate mitogen-activated protein kinase (MAPK) and propagate the apoptotic signal. It is membrane-bound and expressed at a higher level in neoplastic cells than in normal cells. Several transcript variants encoding different isoforms have been described for this gene. [provided by RefSeq, Jul 2008]

Product images:



Circular map for RC206061