

Product datasheet for **RC206057**

NPY1R (NM_000909) Human Tagged ORF Clone

Product data:

Product Type:	Expression Plasmids
Product Name:	NPY1R (NM_000909) Human Tagged ORF Clone
Tag:	Myc-DDK
Symbol:	NPY1R
Synonyms:	NPY1-R; NPYR
Mammalian Cell Selection:	Neomycin
Vector:	pCMV6-Entry (PS100001)
E. coli Selection:	Kanamycin (25 ug/mL)
ORF Nucleotide Sequence:	>RC206057 ORF sequence Red=Cloning site Blue=ORF Green=Tags(s)

TTTTGTAATACGACTCACTATAGGGCGGCCGGAATTCGTCGACTGGATCCGGTACCGAGGAGATCTGCC
GCC**CGATCGCC**

ATGAATCAACATTATTTTCCCAGGTTGAAAATCATTTCAGTCCACTCTAATTTCTCAGAGAAGAATGCC
AGCTTCTGGCTTTGAAAATGATGATTGTCATCTGCCCTTGGCCATGATTTACCTTAGCTCTTGCTTA
TGGAGCTGTGATCATTCTGGTGTCTCTGGAACTGGCCTTGATCATAATCATCTTGAACAAAAGGAG
ATGAGAAATGTTACCAACATCCTGATTGTGAACCTTCTCTCAGACTTGCTTGTGCCATCATGTGTC
TCCCCTTACATTTGTCTACACATTAATGGACCACTGGGTCTTGGTGGGCGATGTGTAAGTTGAATCC
TTTTGTGCAATGTGTTCAATCACTGTGTCCATTTCTCTCTGGTTCTCATTGCTGTGGAACGACATCAG
CTGATAATCAACCCTCGAGGGTGGAGACAAATAATAGACATGCTTATGTAGGTATTGCTGTGATTTGGG
TCCTTGTGTGGCTTCTTCTTGGCTTCTGATCTACCAAGTAATGACTGATGAGCCGTTCCAAAATGT
AACACTTGATGCGTACAAAGACAAATACGTGTGCTTTGATCAATTTCCATCGGACTCTCATAGGTTGTCT
TATACCACTCTCCTCTTGGTGTGTCAGTATTTGGTCCACTTTGTTTTATTTATTTGCTACTTCAAGA
AACCAAAAGAATCAATATCATGCTGCTCCATTGGTAGCATTGTCAGTCTGCTGGCTCCCTCTTACC
ATCTTTAACACTGTGTTGATTGGAATCATCAGATCATTGCTACCTGCAACCACAATCTGTTATTCCTGC
TCTGCCACCTCACAGCAATGATATCCACTGTGTCAACCCCATATTTTATGGGTTCTGAACAAAACCTT
CCAGAGAGACTTGCAGTCTTCTTCAACTTTTGTGATTTCCGGTCTCGGGATGATGATTATGAAACAATA
GCCATGTCCAGATGCACACAGATGTTTCCAAAACCTTCTTTGAAGCAAGCAAGCCAGTCGATTTAAAA
AAATCAACAACAATGATGATAATGAAAAATC

ACGCGTACGCGGCCGCTCGAGCAGAACTCATCTCAGAAGAGGATCTGGCAGCAATGATATCCTGGATT
ACAAGGATGACGACGATAAGGTTTAA



[View online >](#)

Protein Sequence: >RC206057 protein sequence
 Red=Cloning site Green=Tags(s)

MNSTLFSQVENHSVHSNFSEKNAQLLAFENDDCHLPLAMIFTLALAYGAVIILGVSGNLALIIIIILKQKE
 MRNVTNILIVNLSFSDLLVAIMCLPFTFVYTLMDHWVFEAMCKLNPFVQCVSITVSIFSLVLI AVERHQ
 LIINPRGWRPNRHHAYVGI AVI WV LAVASSLPFLIYQVMTDEPFQNVTLDAYKDYVCFDQFSPDSHRLS
 YTTLLLVLQYFGPLCFIFICYFKIYIRLKRNNMMDKMRDNKYRSSETKRINIMLLSIVVAFVAVCWLP
 LPT IFNTVFDWNHQIIATCNHLLFLLCHLTAMISTCVNPIFYGFLNKNFQRDLQFFNFCDFRSRDDDYETI
 AMSTMHTDVSKTSLKQASPVAFKKINNDNEKI

TRTRPLEQKLISEEDLAANDILDYKDDDDKV

Chromatograms: https://cdn.origene.com/chromatograms/mk6196_f06.zip

Restriction Sites: SgfI-MluI

Cloning Scheme:



ACCN: NM_000909

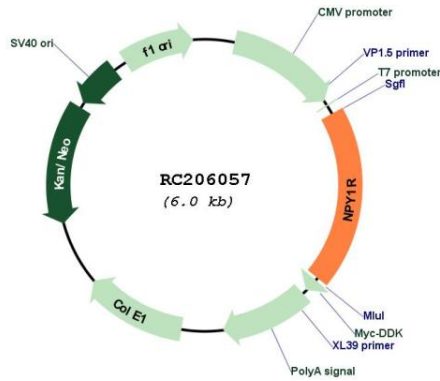
ORF Size: 1152 bp

OTI Disclaimer: Due to the inherent nature of this plasmid, standard methods to replicate additional amounts of DNA in E. coli are highly likely to result in mutations and/or rearrangements. Therefore, OriGene does not guarantee the capability to replicate this plasmid DNA. Additional amounts of DNA can be purchased from OriGene with batch-specific, full-sequence verification at a reduced cost. Please contact our customer care team at custsupport@origene.com or by calling 301.340.3188 option 3 for pricing and delivery.

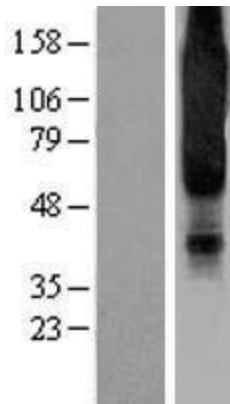
The molecular sequence of this clone aligns with the gene accession number as a point of reference only. However, individual transcript sequences of the same gene can differ through naturally occurring variations (e.g. polymorphisms), each with its own valid existence. This clone is substantially in agreement with the reference, but a complete review of all prevailing variants is recommended prior to use. [More info](#)

OTI Annotation:	This clone was engineered to express the complete ORF with an expression tag. Expression varies depending on the nature of the gene.
Components:	The ORF clone is ion-exchange column purified and shipped in a 2D barcoded Matrix tube containing 10ug of transfection-ready, dried plasmid DNA (reconstitute with 100 ul of water).
Reconstitution Method:	<ol style="list-style-type: none">1. Centrifuge at 5,000xg for 5min.2. Carefully open the tube and add 100ul of sterile water to dissolve the DNA.3. Close the tube and incubate for 10 minutes at room temperature.4. Briefly vortex the tube and then do a quick spin (less than 5000xg) to concentrate the liquid at the bottom.5. Store the suspended plasmid at -20°C. The DNA is stable for at least one year from date of shipping when stored at -20°C.
RefSeq:	NM_000909.6
RefSeq Size:	2974 bp
RefSeq ORF:	1155 bp
Locus ID:	4886
UniProt ID:	P25929
Cytogenetics:	4q32.2
Domains:	7tm_1
Protein Families:	Druggable Genome, GPCR, Transmembrane
Protein Pathways:	Neuroactive ligand-receptor interaction
MW:	44.4 kDa
Gene Summary:	This gene belongs to the G-protein-coupled receptor superfamily. The encoded transmembrane protein mediates the function of neuropeptide Y (NPY), a neurotransmitter, and peptide YY (PYY), a gastrointestinal hormone. The encoded receptor undergoes fast agonist-induced internalization through clathrin-coated pits and is subsequently recycled back to the cell membrane. Activation of Y1 receptors may result in mobilization of intracellular calcium and inhibition of adenylate cyclase activity. [provided by RefSeq, Aug 2013]

Product images:



Circular map for RC206057



Western blot validation of overexpression lysate (Cat# [LY400329]) using anti-DDK antibody (Cat# [TA50011-100]). Left: Cell lysates from untransfected HEK293T cells; Right: Cell lysates from HEK293T cells transfected with RC206057 using transfection reagent MegaTran 2.0 (Cat# [TT210002]).