

Product datasheet for **RC206053**

PMP2 (NM_002677) Human Tagged ORF Clone

Product data:

Product Type: Expression Plasmids
Product Name: PMP2 (NM_002677) Human Tagged ORF Clone
Tag: Myc-DDK
Symbol: PMP2
Synonyms: CMT1G; FABP8; M-FABP; MP2; P2
Mammalian Cell Selection: Neomycin
Vector: pCMV6-Entry (PS100001)
E. coli Selection: Kanamycin (25 ug/mL)
ORF Nucleotide Sequence: >RC206053 ORF sequence
Red=Cloning site Blue=ORF Green=Tags(s)

TTTTGTAATACGACTCACTATAGGGCGGCCGGAATTCGTCGACTGGATCCGGTACCGAGGAGATCTGCC
GCC**CGATCGCC**

ATGAGCAACAAATTCCTGGGCACCTGGAACTTGTCTCTAGTGAGAACTTTGACGATTACATGAAAGCTC
TGGGTGTGGGTTAGCCACCAGAAAACCTGGAAATTTGGCCAAACCCACTGTGATCATCAGCAAGAAAGG
AGATATTATAACTATACGAACTGAAAGTACCTTTAAAAATACAGAAATCTCCTTCAAGCTAGGCCAGGAA
TTTGAAGAAACCACAGCTGACAAATAGAAAGACCAAGAGCATCGTAACCCTGCAGAGAGGATCACTGAATC
AAGTGCAGAGATGGGATGGCAAAGAGACAACCATAAAGAGAAAGCTAGTGAATGGGAAAAATGGTAGCGGA
ATGTAATAATGAAGGGCGTGGTGTGCACCAGAATCTATGAGAAGGTC

ACGCGTACGCGGCCGCTCGAGCAGAAAACCTCATCTCAGAAGAGGATCTGGCAGCAAATGATATCCTGGATT
ACAAGGATGACGACGATAAGGTTTAA

Protein Sequence: >RC206053 protein sequence
Red=Cloning site Green=Tags(s)

MSNKFLGTWKLVSSENFDDYMKALGVGLATRKLGNLAKPTVIIISKGDIIIRTESTFKNTEISFKLGQE
FEETTADNRKTKSIVTLQRGSLNQVQRWDGKETTIRKRLVNGKMVAECKMKGVVCTRIYEKV

TRTRPLEQKLISEEDLAANDILDYKDDDDKV

Chromatograms: https://cdn.origene.com/chromatograms/mk6073_a10.zip

Restriction Sites: SgfI-MluI



[View online »](#)

Cloning Scheme:


ACCN: NM_002677

ORF Size: 396 bp

OTI Disclaimer: The molecular sequence of this clone aligns with the gene accession number as a point of reference only. However, individual transcript sequences of the same gene can differ through naturally occurring variations (e.g. polymorphisms), each with its own valid existence. This clone is substantially in agreement with the reference, but a complete review of all prevailing variants is recommended prior to use. [More info](#)

OTI Annotation: This clone was engineered to express the complete ORF with an expression tag. Expression varies depending on the nature of the gene.

Components: The ORF clone is ion-exchange column purified and shipped in a 2D barcoded Matrix tube containing 10ug of transfection-ready, dried plasmid DNA (reconstitute with 100 ul of water).

- Reconstitution Method:**
1. Centrifuge at 5,000xg for 5min.
 2. Carefully open the tube and add 100ul of sterile water to dissolve the DNA.
 3. Close the tube and incubate for 10 minutes at room temperature.
 4. Briefly vortex the tube and then do a quick spin (less than 5000xg) to concentrate the liquid at the bottom.
 5. Store the suspended plasmid at -20°C. The DNA is stable for at least one year from date of shipping when stored at -20°C.

RefSeq: [NM_002677.5](#)

RefSeq Size: 3579 bp

RefSeq ORF: 399 bp

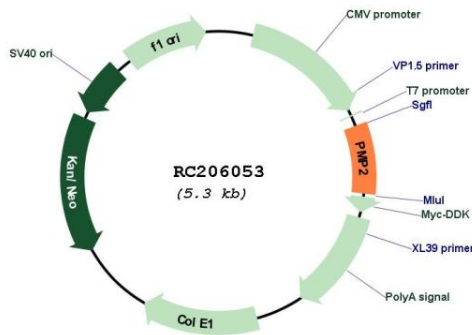
Locus ID: 5375

UniProt ID: [P02689](#)

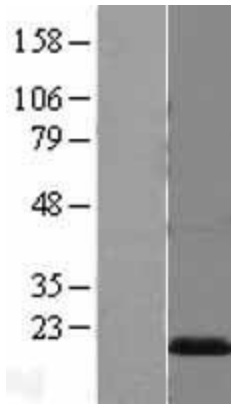
Cytogenetics: 8q21.13
Domains: lipocalin
MW: 14.9 kDa

Gene Summary: The protein encoded by this gene localizes to myelin sheaths of the peripheral nervous system. The encoded protein can bind both the membrane layers of the sheaths and monomeric lipids, and is thought to provide stability to the sheath. A defect in this gene was shown to be a cause of dominant demyelinating CMT neuropathy. [provided by RefSeq, Jan 2017]

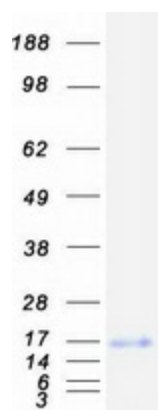
Product images:



Circular map for RC206053



Western blot validation of overexpression lysate (Cat# [LY400948]) using anti-DDK antibody (Cat# [TA50011-100]). Left: Cell lysates from untransfected HEK293T cells; Right: Cell lysates from HEK293T cells transfected with RC206053 using transfection reagent MegaTran 2.0 (Cat# [TT210002]).



Coomassie blue staining of purified PMP2 protein (Cat# [TP306053]). The protein was produced from HEK293T cells transfected with PMP2 cDNA clone (Cat# RC206053) using MegaTran 2.0 (Cat# [TT210002]).