

Product datasheet for **RC206045**

FOXA1 (NM_004496) Human Tagged ORF Clone

Product data:

Product Type:	Expression Plasmids
Product Name:	FOXA1 (NM_004496) Human Tagged ORF Clone
Tag:	Myc-DDK
Symbol:	FOXA1
Synonyms:	HNF3A; TCF3A
Mammalian Cell Selection:	Neomycin
Vector:	pCMV6-Entry (PS100001)
E. coli Selection:	Kanamycin (25 ug/mL)



[View online »](#)

ORF Nucleotide Sequence:

>RC206045 ORF sequence
 Red=Cloning site Blue=ORF Green=Tags(s)

TTTTGTAATACGACTCACTATAGGGCGGCCGGGAATTCGTCGACTGGATCCGGTACCGAGGAGATCTGCC
 GCC**GCGATCGCC**

ATGTTAGGAAGTGTGAAGATGGAAGGGCATGAAACCAGCGACTGGAACAGCTACTACGCAGACACGCAGG
 AGGCCTACTCCTCCGTCCCGTACGCAACATGAACTCAGGCCTGGGCTCCATGAACTCCATGAACACCTA
 CATGACCATGAACACCATGACTACGAGCGGCAACATGACCCCGCGTCTTCAACATGTCCTATGCCAAC
 CCGGGCTAGGGGCGGCCTGAGTCCCGGCGCAGTAGCCGGCATGCCGGGGGCTCGGCGGGCGCCATGA
 ACAGCATGACTGCGGCCGCGTACGGCCATGGGTACGGCGCTGAGCCGAGCGGCATGGGCGCCATGGG
 TGCGCAGCAGGGCGCCTCCATGAATGGCTGGGCCCTACGCGGCCGATGAACCCGTGCATGAGCCCC
 ATGGCGTACGCGCCGTCCAACCTGGGCCGAGCCGCGGGCGGGCGGCGGACGCCAAGACGTTCAAGC
 GCAGCTACCCGACGCCAAGCCGCCCTACTCGTACATCTCGTTCATCACCATGGCCATCCAGCAGGCGCC
 CAGCAAGATGCTCAGCTGAGCGAGATCTACCAGTGGATCATGGACCTCTCCCCTATTACCGGCAGAAC
 CAGCAGCGCTGGCAGAACTCCATCCGCCACTCGCTGTCCTTCAATGACTGCTTCGTAAGGTGGCAGCT
 CCCCAGCAAGCCGGGCAAGGGCTCCTACTGGACGCTGCACCCGACTCCGGCAACATGTTTCGAGAACGG
 CTGCTACTTGGCCGCCAGAAGCGCTTCAAGTGCAGAGAAGCAGCCGGGGGCGGGCGGGGGCGGGAGC
 GGAAGCGGGGCGAGCGGCCAAGGGCGGCCCTGAGAGCCGAAGGACCCCTCTGGCGCCTTAACCCCA
 GCGCCGACTCGCCCTCCATCGGGGTGTGCACGGGAAGACCGGCCAGCTAGAGGGCGCGCCGGCCCCCG
 GCCCGCCAGCCCAAGACTTGGACCACAGTGGGGCGACGGCGACAGGGGGCGCCTCGGAGTTGAAG
 ACTCCAGCCTCTCAACTGCGCCCCCAATAAGCTCCGGGCCCGGGGCGCTGGCCTCTGTGCCCGCCTCTC
 ACCCGGCACACGGCTTGGCACCCACAGTCCAGCTGCACCTGAAAGGGGACCCCACTACTCCTCAA
 CCACCCGTTCTCCATCAACAACCTCATGTCCTCCTCGGAGCAGCAGCATAAAGTGGACTTCAAGGCATA
 GAACAGGCACTGCAATACTCGCCTTACGCTCTACGTTGCCCGCAGCCTGCCTTAGGCAGCGCCTCGG
 TGACCACCAGGAGCCCCATCGAGCCCTCAGCCCTGGAGCCGGCGTACTACCAAGGTGTGTATTCCAGACC
 CGTCCTAAACACTTCC

ACGCGTACGCGGGCGCTCGAGCAGAACTCATCTCAGAAGAGGATCTGGCAGCAATGATATCCTGGATT
 ACAAGGATGACGACGATAAGGTTTAA

Protein Sequence:

>RC206045 protein sequence
 Red=Cloning site Green=Tags(s)

MLGTVKMEGHETSDWNSYYADTQEAYSSVPVSNMNSGLGSMNSMNTYMTMNTMTTSGNMTPASFNMSYAN
 PGLGAGLSPGAVAGMPGGSAGAMNSMTAAGVTAMGTALSPSGMGAMGAQQAASMNGLGPYAAAMNPCMSP
 MAYAYPNLGRSRAGGGGDAKTFKRSYPHAKPPYSYISLITMAIQQAPSKMLTLEIYQWIMDLFPYYRQN
 QQRWQNSIRHLSFNDFVVKVARSPDKPGKGSYWTLPDPSGNMFENGCYLRQKRFKCEKQPGAGGGGGS
 GSGGSGAKGGPESRKDPGASNPADSPLHRGVHGKTGQLEGAPAPGPAASPQTLDHSGATATGGASELK
 TPASSTAPPISGPGALASVPASHPAHGLAPHESQLHLKGDPHYSFNHPFSINNLMSSSEQHKLDFKAY
 EQALQYSPYGSTLPASLPLGSASVTTTRSPIEPSALEPAYYQGVYSRPVLNTS

TRTRPLEQKLISEEDLAANDILDYKDDDDKV

Chromatograms:

https://cdn.origene.com/chromatograms/mk6139_d05.zip

Restriction Sites:

Sgfl-MluI

Cloning Scheme:


ACCN: NM_004496

ORF Size: 1416 bp

OTI Disclaimer: Due to the inherent nature of this plasmid, standard methods to replicate additional amounts of DNA in E. coli are highly likely to result in mutations and/or rearrangements. Therefore, OriGene does not guarantee the capability to replicate this plasmid DNA. Additional amounts of DNA can be purchased from OriGene with batch-specific, full-sequence verification at a reduced cost. Please contact our customer care team at custsupport@origene.com or by calling 301.340.3188 option 3 for pricing and delivery.

The molecular sequence of this clone aligns with the gene accession number as a point of reference only. However, individual transcript sequences of the same gene can differ through naturally occurring variations (e.g. polymorphisms), each with its own valid existence. This clone is substantially in agreement with the reference, but a complete review of all prevailing variants is recommended prior to use. [More info](#)

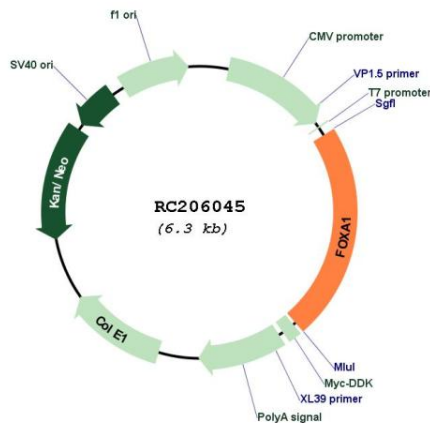
OTI Annotation: This clone was engineered to express the complete ORF with an expression tag. Expression varies depending on the nature of the gene.

Components: The ORF clone is ion-exchange column purified and shipped in a 2D barcoded Matrix tube containing 10ug of transfection-ready, dried plasmid DNA (reconstitute with 100 ul of water).

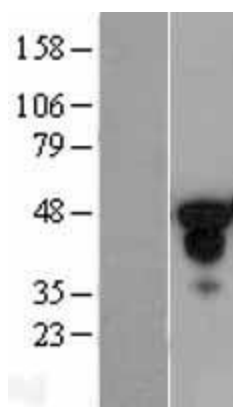
- Reconstitution Method:**
1. Centrifuge at 5,000xg for 5min.
 2. Carefully open the tube and add 100ul of sterile water to dissolve the DNA.
 3. Close the tube and incubate for 10 minutes at room temperature.
 4. Briefly vortex the tube and then do a quick spin (less than 5000xg) to concentrate the liquid at the bottom.
 5. Store the suspended plasmid at -20°C. The DNA is stable for at least one year from date of shipping when stored at -20°C.

Note:	Plasmids are not sterile. For experiments where strict sterility is required, filtration with 0.22um filter is required.
RefSeq:	<u>NM_004496.5</u>
RefSeq Size:	3396 bp
RefSeq ORF:	1419 bp
Locus ID:	3169
UniProt ID:	<u>P55317</u>
Cytogenetics:	14q21.1
Domains:	FH
Protein Families:	ES Cell Differentiation/IPS, Transcription Factors
MW:	49.1 kDa
Gene Summary:	This gene encodes a member of the forkhead class of DNA-binding proteins. These hepatocyte nuclear factors are transcriptional activators for liver-specific transcripts such as albumin and transthyretin, and they also interact with chromatin. Similar family members in mice have roles in the regulation of metabolism and in the differentiation of the pancreas and liver. [provided by RefSeq, Jul 2008]

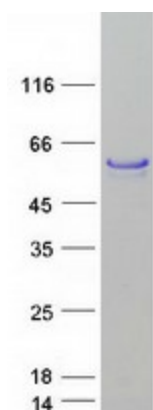
Product images:



Circular map for RC206045



Western blot validation of overexpression lysate (Cat# [LY401427]) using anti-DDK antibody (Cat# [TA50011-100]). Left: Cell lysates from untransfected HEK293T cells; Right: Cell lysates from HEK293T cells transfected with RC206045 using transfection reagent MegaTran 2.0 (Cat# [TT210002]).



Coomassie blue staining of purified FOXA1 protein (Cat# [TP306045]). The protein was produced from HEK293T cells transfected with FOXA1 cDNA clone (Cat# RC206045) using MegaTran 2.0 (Cat# [TT210002]).