

Product datasheet for RC206039

Cyclophilin 40 (PPID) (NM_005038) Human Tagged ORF Clone

Product data:

Product Type:	Expression Plasmids
Product Name:	Cyclophilin 40 (PPID) (NM_005038) Human Tagged ORF Clone
Tag:	Myc-DDK
Symbol:	Cyclophilin 40
Synonyms:	CYP-40; CYPD
Mammalian Cell Selection:	Neomycin
Vector:	pCMV6-Entry (PS100001)
E. coli Selection:	Kanamycin (25 ug/mL)
ORF Nucleotide Sequence:	>RC206039 ORF sequence Red=Cloning site Blue=ORF Green=Tags(s)

TTTTGTAATACGACTCACTATAGGGCGGCCGGAATTCGTCGACTGGATCCGGTACCGAGGAGATCTGCC
GCC**CGATCGCC**

ATGTCGCACCCGTCCCCCAAGCCAAGCCCTCAACCCAGTAACCCTCGAGTCTTCTTTGACGTGGACA
TCGGAGGGGAGCGAGTTGGTCGAATTGTCTTAGAATTGTTGCAGATATCGTACCCAAAACCTGCGGAAAA
TTTTCGTGCAGTGTACAGGAGAAAAAGGCATTGGACACACGACTGGGAAACCTCTCCATTTCAAAGGA
TGCCCTTTTCATCGAATTATTAAGAAATTTATGATTAGGGTGGAGACTTCTCAAATCAGAATGGGACAG
GTGGAGAAAGTATTTATGGTGAAAAATTTGAAGATGAAAATTTCCATTACAAGCATGATCGGGAGGTTT
ACTGAGCATGGCAAATGCAGGCCCAACACAAACGGTTCTCAGTTTTTTATCACAAACAGTTCCAACCTCT
CATTTGGATGGGAAACATGTGGTGGTTGGCCAAGTAATTAAGGAATAGGAGTGGCAAGGATATTGGAAA
ATGTGGAAGTGAAGGTGAAAAACCTGCTAAATTTGCGTATTGCGAATGTGGAGAAATGAAGGAAGG
AGATGACGGGGGAATATCCCAAAGATGGCTCTGGCGACAGTCATCCAGATTTCCCTGAGGATGCGGAT
ATAGATTTAAAGATGTAGATAAAATTTATTAATAACAGAAGACTTAAAAACATTGGAATACTTTTT
TCAAATCCGAACTGGGAGATGGCTATTAATAATATGCAGAAGTTTAAAGATACGTGGACAGTTCAA
GGCTGTTATTGAGACAGCAGATAGAGCCAAGCTGCAACCTATAGCTTTAAGCTGTGACTGAATATTGGT
GCTTGTAACTGAAGATGTCAAATTTGGCAGGGAGCAATTGACAGTTGTTTAGAGGCTCTTGAACCTAGACC
CATCAAATACCAAAGCATTGTACCGCAGAGCTCAAGGATGGCAAGGATTAAGAATATGATCAAGCATT
GGCTGATCTTAAGAAAGCTCAGGGGATAGCACCAGAAGATAAAGCTATCCAGGCAGAATTGCTGAAAGTC
AAACAAAAGATAAAGGCACAGAAAGATAAAGAGAAGGCAGTATATGCAAAAATGTTTGCT

ACGCGTACGCGGCCGCTCGAGCAGAAACTCATCTCAGAAGAGGATCTGGCAGCAAATGATATCCTGGATT
ACAAGGATGACGACGATAAGGTTTAA



[View online »](#)

Protein Sequence: >RC206039 protein sequence
Red=Cloning site Green=Tags(s)

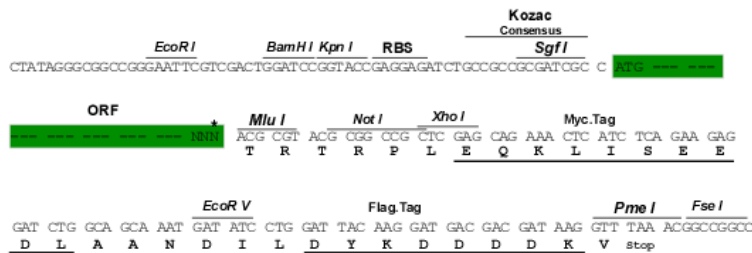
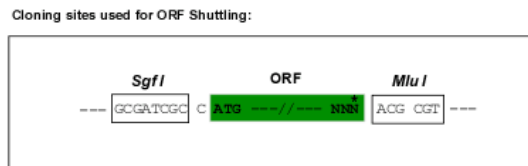
MSHPSPQAKPSNPSNPRVFFDVIDGGERVGRIVLELFADIVPKTAENFRALCTGEKGIGHTTGKPLHFKG
CPFHRIIKKFMIQGGDFSNQNGTGGESIYGEKFEDENFHYKHDREGLLSMANAGRNTNGSQFFITTVPTP
HLDGKHVVFGQVIKIGIVARILENVEVKGEKPAKLCVIAECGELKEGDDGGIFPKDGGSDSHPDFPEDAD
IDLKDVKILLITEDLKNIGNTFKFSQNWEMAIKKYAEVLRVYDSSKAVIETADRKLQPIALSCVLNIG
ACKLKMSNWQGAIDSCLEALELDPSTKALYRRAQGWQGLKEYDQALADLKAQGIAPEDKAIQAELLKV
KQKIKAQKDKKAVYAKMFA

TRTRPLEQKLISEEDLAANDILDYKDDDDKV

Chromatograms: https://cdn.origene.com/chromatograms/mk6072_a06.zip

Restriction Sites: SgfI-MluI

Cloning Scheme:



* The last codon before the Stop codon of the ORF

ACCN: NM_005038

ORF Size: 1110 bp

OTI Disclaimer: The molecular sequence of this clone aligns with the gene accession number as a point of reference only. However, individual transcript sequences of the same gene can differ through naturally occurring variations (e.g. polymorphisms), each with its own valid existence. This clone is substantially in agreement with the reference, but a complete review of all prevailing variants is recommended prior to use. [More info](#)

OTI Annotation: This clone was engineered to express the complete ORF with an expression tag. Expression varies depending on the nature of the gene.

Components: The ORF clone is ion-exchange column purified and shipped in a 2D barcoded Matrix tube containing 10ug of transfection-ready, dried plasmid DNA (reconstitute with 100 ul of water).

Reconstitution Method:

1. Centrifuge at 5,000xg for 5min.
2. Carefully open the tube and add 100ul of sterile water to dissolve the DNA.
3. Close the tube and incubate for 10 minutes at room temperature.
4. Briefly vortex the tube and then do a quick spin (less than 5000xg) to concentrate the liquid at the bottom.
5. Store the suspended plasmid at -20°C. The DNA is stable for at least one year from date of shipping when stored at -20°C.

RefSeq: [NM_005038.3](#)

RefSeq Size: 1851 bp

RefSeq ORF: 1113 bp

Locus ID: 5481

UniProt ID: [Q08752](#)

Cytogenetics: 4q32.1

Domains: TPR, pro_isomerase

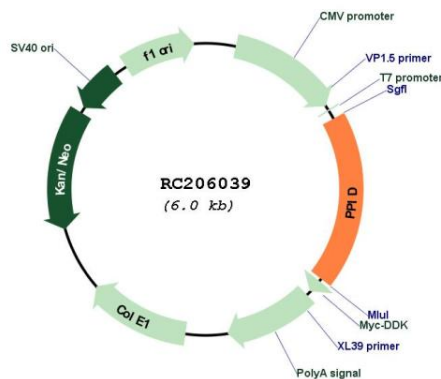
Protein Families: Stem cell - Pluripotency

Protein Pathways: Calcium signaling pathway, Huntington's disease, Parkinson's disease

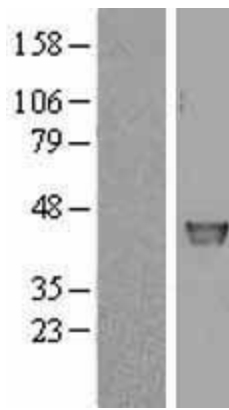
MW: 40.8 kDa

Gene Summary: The protein encoded by this gene is a member of the peptidyl-prolyl cis-trans isomerase (PPIase) family. PPIases catalyze the cis-trans isomerization of proline imidic peptide bonds in oligopeptides and accelerate the folding of proteins. This protein has been shown to possess PPIase activity and, similar to other family members, can bind to the immunosuppressant cyclosporin A. [provided by RefSeq, Jul 2008]

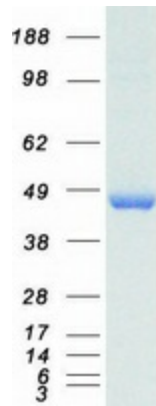
Product images:



Circular map for RC206039



Western blot validation of overexpression lysate (Cat# [LY401561]) using anti-DDK antibody (Cat# [TA50011-100]). Left: Cell lysates from untransfected HEK293T cells; Right: Cell lysates from HEK293T cells transfected with RC206039 using transfection reagent MegaTran 2.0 (Cat# [TT210002]).



Coomassie blue staining of purified PPID protein (Cat# [TP306039]). The protein was produced from HEK293T cells transfected with PPID cDNA clone (Cat# RC206039) using MegaTran 2.0 (Cat# [TT210002]).