

Product datasheet for RC206037

DENND2B (NM_213618) Human Tagged ORF Clone

Product data:

Product Type:	Expression Plasmids
Product Name:	DENND2B (NM_213618) Human Tagged ORF Clone
Tag:	Myc-DDK
Symbol:	DENND2B
Synonyms:	HTS1; p126; ST5
Mammalian Cell Selection:	Neomycin
Vector:	pCMV6-Entry (PS100001)
E. coli Selection:	Kanamycin (25 ug/mL)
ORF Nucleotide Sequence:	>RC206037 ORF sequence Red=Cloning site Blue=ORF Green=Tags(s)

TTTTGTAATACGACTCACTATAGGGCGGCCGGAATTCGTCGACTGGATCCGGTACCGAGGAGATCTGCC
GCCCGGATCGCC

ATGACCATGACTGCCAACAGAATTCCAGCATCACCCACGGAGCTGGTGGCACTAAAGCCCTCGGGGA
CTCTGAGCAGGTCTCAGTCAGTCTCTCCACCTCCAGTTCTCTCCACCAAGGAGTCCCCTACCCGCT
CAGTGATAGTGAAACCTCAGCCTGCAGGTACCCAGCCACTCCAGCTCCCGGTGCTCCTCAAGGACCGG
CACCCCCAGCTCCTTACCCCAAGATCCTCAAGATCCCTCCCAAGATACTTCCCAACCCACTGTCCCT
TCAAGACCGCCAGCTTCGGTTATTTGGACAGAAGCCCTTCGGCGTGCAAGAGAGACGCCAAAAGGAAAG
TGTCCAAGGCGCAGCCAGGATGTAGCAGGGGTGCTGCCTGCCTCCCTTGCACAGAGCAGCCATTC
CCGGGGCCAGCAGCTGGCCCCGGGGCGTCTTGCTGACCCGTACCGGTACCCGCGCCACAGCCTGGGCA
TCCGGGAGAAGATATCAGCATGGGAAGGTGCGCGAGAGGCGTGCAGGATGAGCATGTGTGGAGAGAA
GCGGGAGGGCTCTGGGAGCGAGTGGCGGCCAGTGAGGGTGCACCCAGCCTGGGCTGTCCAGCGTGGT
CCGTCCCCTGCAGCTCTGAAAAGACCTTTGATTTCAAGGGCCTCCGAGGATGAGCAGGACCTTCTCCG
AGTGTTCCTACCAGAGACTGAGGAGGAGGAGAGGCGCTCCCTGTCGGGACTTTTCTACCGGTGGA
GAAACGGCTGGCCGGAGTGAGCCAGCGCCTTCTCAGGGGCATGGCAGCAGGAAGGAGAGCTCAGCA
GTGCTGAGCCGGATCCAGAAAATTGAACAGGTCTGAAGGAGCAGCCGGGCGGGGCTCCCCAGCTCC
CCAGCAGCTGCTACAGCGTGGACCGGGGAAAAGGAACACTGGAACCTTGGGCTCCTTGGAGGAGCCGGC
AGGGGGCGCAGTGTGAGCGCTGGCAGCCGGGCGTGGAGTGGTGGTGTGCGGGGAGGCGGGCCCA
CCCCAGAGAGGGAAGGAGTGGTTCCTAAGCCGGGACCCTGGAATAGCCCTAGCTCCCAGCGGC
TGCCATCGAAGAGTTCCTCGATCCCGCTGTGAACCTGTCCCAAAACCAAGCGCACCTTTGAATACGA
GGCTGACAAGAACCCCAAGAGTAAGCCAGTAATGGTCTACCTCCTTACCCACACTGTGCTCCACT
CCCTTGCCTCCACCCAGCCCCGCGAGTACCCGGAGACCAAGAAGGACATGCGTGGTACCGCAAGT
CCCAGAGCAGAAAATCCTTTGAGTTTGGAGTGCATCCAGTCTCCAGTCCCTGTACCCTCTTCTCCAC
TGAGAATGGTACTGAGAACCAACCAAGTTGGATCCAAAAGCACTTTAGAAGAAAATGCCTATGAAGAT



[View online »](#)

ATTGTGGGAGATCTGCCAAGGAGAATCCATATGAGGATGTGGACTTAAAGAGCCGAAGAGCAGGACGAA
AATCCCAGCAACTGTCTGAGAACTCCTTGGACTCTTTCACACAGGATGTGGAGTCCTCAGGACAGGAAGTA
CAACAGCCCGCCACACAGCTTTCCTGAAACCAACAGCCAGTCCCTGCCAGTGGAACTGGTCAGAA
AGGAAGAGCCACCGGCTGCCACGATTACCAAGAGGCACAGCCATGACGACATGCTGCTGGCTCAGC
TGAGTCTGCCGTCTCACCTCCAGCCTCAATGAAGACAGCCTCAGCACCAGCAGCTGCTGTCCAG
CCGCCGGGCCCGCCGATTCCCAAGCTTGTCCAAGAATAACTCCATCTACAATGCCAAGAGAGGAAAAG
AAGAGATTAATAAAGTTGTCTATGTCCAGCATTGAAACAGCATCACTGAGAGATGAAAACAGTGAAGCG
AGAGCGACTCTGATGACAGGTTCAAAGCCACACACAGCGCTGGTCCACATCCAGTCGATGCTGAAGCG
CGCCCCAGCTATCGCACGCTGGAGCTGGAGCTGCTGGAGTGGCAGGAGCGGGAGCTTTTTGAGTACTTT
GTGGTGGTGTCCCTCAAGAAGAAGCCATCGCGAAACACCTACCTCCCCAAGTCTCCTACCAGTTTCCCA
AGCTGGACCGACCACCAAGCAGATGCGAGAGGCAGAGGAAAGGCTCAAAGCCATTTCCAGTTTGGCTT
CCCTGATGCCAAGGACTGGCTTCTGTGCAGAGTATAGCAGTGAAGCTTTTCTTTCATGCTGACTGGG
GAAGATGGCGGCAGACGCTTTGGCTACTGCAGGCGTTACTGCCAAGTGGGAAAGGGCCCGGTTGCCAG
AGGTGACTGTGCATCAGCCGCTTGGCTGCTTCGGCTTGTTCCTTCCAAAGTCTAGATGAGGTGGAGCG
CCGGCGTGGGATCTCCGCTGCATTGGTCTATCCTTTTCATGAGAAGTCTCATGGAGTCGCCCTTCCCAGCC
CCAGGGAAGACCATCAAAGTGAAGACATTCTGCCAGGTGCTGGCAATGAGGTGTTAGAGCTGCGGCCGGC
CCATGGACTCAAGGCTGGAGCACGTGGACTTTGAGTGCCTTTTTACCTGCCTCAGTGTGCCCCAGCTCAT
CCGAATCTTTCCTCACTGCTGCTGGAGCGCCGGTCATTTTTGTGGCAGATAAGCTCAGTACCCTCTCC
AGCTGCTCCCACGCGGTGGTGGCCTTGTCTACCCCTTCTCCTGGCAGCACACCTTATTCTGTCTCTCC
CGGCCTCCATGATTGACATCGTCTGCTGTCCCACCCCTTCTGGTTGGCTGCTCTCCAGCTCCCTCCC
CAAAGTGAAGGAGCTGCCTGTGGAGGAGGCGTGATGGTGAATCTGGGATCTGACCGATTCCGACAG
ATGGACGACGAAGACACGTTGTTACCTAGGAAGTTACAGGCAGCTCTGGAGCAGGCTCTGGAGAGGAAGA
TGAGCTGATCTCCAGGACTCTGACAGCGACTCCGACGATGAATGTAATACCCTCAATGGGCTGGTGTC
GGAGGTGTTTATCCGGTTCTTTGTGGAGACCGTTGGGCACTACTCCCTTTTCTGACACAGAGTGAGAAG
GGAGAGAGGGCCTTTCAGCGAGAGGCTTCCGCAATCTGTGGCCTCCAAAAGCATCCGCCGCTTCTTG
AGGTTTTTATGGAGTCTCAGATGTTTGGCTTCCATCCAAGACAGGGAGCTAAGAAAGTGTCCGGCAAA
GGGCTTTTTGAGCAGCGAGTGGAGCAGTACTTAGAAGAATCCAGACACTGAGCAGAGTGAATGAAT
AAGTTTCTCCGAGGTTGGGCAACAAAATGAAGTTTCTCCACAAGAAGAAT

ACGCGTACGCGGCCGCTCGAGCAGAACTCATCTCAGAAGAGGATCTGGCAGCAATGATATCCTGGATT
ACAAGGATGACGACGATAAGGTTTAA

Protein Sequence: >RC206037 protein sequence
Red=Cloning site Green=Tags(s)

```

MTMTANKNSSITHGAGGTKAPRGTLRSRSQSVSPPPVLSPPRSPIYPLSDSETSACRYPSHSSSRVLLKDR
HPPAPSPQNPQDPSPDTPPTCPFKTASFGYLDSPSACKRDAQKESVQGAQDVAGVAACLPLAQSTPF
PGPAAGPRGVLTRTGTRAHSLGIREKISAWEGRREASPRMSMCGEKREGSGSEWAASEGCPSLGCPSV
PSPCSSEKTFDFKGLRRMSRTFSECSYPETEEEGEALPVRDSFYRLEKRLGRSEPSAFLRGHGSRKESSA
VLSRIQKIEQVLKEQPGRGLPQLPSSCYSVDRGKRNTGLGSLLEPAGGASVSAGSRAVGVAGVAGEAGP
PPEREGSGSTKPGTGNPSSQRLPSKSSLDPAVNPVPPKPKRTFEYEADKNPKSKPSNGLPPSPTAAPP
PLPSTPAPPVTRPKKDMRGHRKSQSRKSFEDASSLQSLYPSSPTENGTENQPKFGSKSTLEENAYED
IVGDLPKENPYEDVDLKSRRAGRKSQQLSENLSLHRMWSPODRKYNPPTQLSLKPNSSQLSRGNWSE
RKSHRLLPRLPKRHSHDDMLLLAQLSLPSSPSSLNEDSLTTSELLSSRRARRIPKLVQRTNSIYNAKRGK
KRLKLSMSSIETASLRDENSESESDDRFKAHTQRLVHIQSMLKRAPSYRTLELELLEWQERELFEYF
VVVSLKKKPSRNTYLPEVSYQFPKLDRPTQMREAEERLKAIPQFCFPAKDWPVSEYSSETFSFMLTGT
EDGRRFGYCRLLPSGKGPRLPEVYCVISRLGCFGLFSKVLDEVERRRGI SAALVYPFMRSLMESPFPA
PGKTIKVKTFPGAGNEVLELRPMDSRLEHVDFECLFTCLSVRQLIRIFASLLLERRVIFVADKLSTLS
SCSHAVVALLYPFQSWQHTFIPVLPASMIIDIVCCPTPFLVGLLSSSLPKLKELPVEALMVNLGSDRFIRQ
MDEDTLLPRKLQAALQALERKNELISQSDSDSDDECNTLNGLVSEVFI RFFVETVGHYSLFLTQSEK
GERAFQREAFRKSVAKSI RRFLEVFMESQMFAGFIQDRELKCRACKGLFEQRVEQYLEELPDTEQSGMN
KFLRGLGNKMKFLHKKN
    
```

TRTRPLEQKLISEEDLAANDILDYKDDDDKV

Chromatograms: https://cdn.origene.com/chromatograms/mk6318_e03.zip

Restriction Sites: SgfI-MluI

Cloning Scheme:

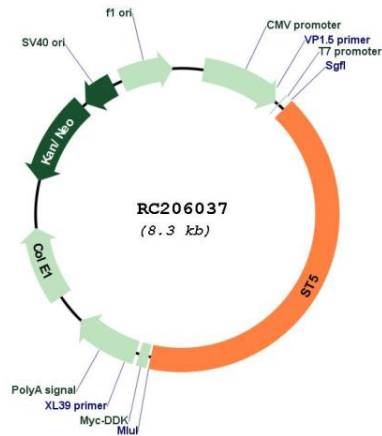


ACCN: NM_213618

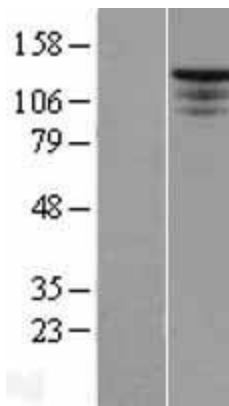
ORF Size: 3411 bp

OTI Disclaimer:	The molecular sequence of this clone aligns with the gene accession number as a point of reference only. However, individual transcript sequences of the same gene can differ through naturally occurring variations (e.g. polymorphisms), each with its own valid existence. This clone is substantially in agreement with the reference, but a complete review of all prevailing variants is recommended prior to use. More info
OTI Annotation:	This clone was engineered to express the complete ORF with an expression tag. Expression varies depending on the nature of the gene.
Components:	The ORF clone is ion-exchange column purified and shipped in a 2D barcoded Matrix tube containing 10ug of transfection-ready, dried plasmid DNA (reconstitute with 100 ul of water).
Reconstitution Method:	<ol style="list-style-type: none">1. Centrifuge at 5,000xg for 5min.2. Carefully open the tube and add 100ul of sterile water to dissolve the DNA.3. Close the tube and incubate for 10 minutes at room temperature.4. Briefly vortex the tube and then do a quick spin (less than 5000xg) to concentrate the liquid at the bottom.5. Store the suspended plasmid at -20°C. The DNA is stable for at least one year from date of shipping when stored at -20°C.
RefSeq:	NM_213618.1 , NP_998783.1
RefSeq Size:	4371 bp
RefSeq ORF:	3414 bp
Locus ID:	6764
UniProt ID:	P78524
Cytogenetics:	11p15.4
MW:	126.4 kDa
Gene Summary:	This gene was identified by its ability to suppress the tumorigenicity of HeLa cells in nude mice. The protein encoded by this gene contains a C-terminal region that shares similarity with the Rab 3 family of small GTP binding proteins. This protein preferentially binds to the SH3 domain of c-Abl kinase, and acts as a regulator of MAPK1/ERK2 kinase, which may contribute to its ability to reduce the tumorigenic phenotype in cells. Three alternatively spliced transcript variants of this gene encoding distinct isoforms are identified. [provided by RefSeq, Jul 2008]

Product images:



Circular map for RC206037



Western blot validation of overexpression lysate (Cat# [LY417312]) using anti-DDK antibody (Cat# [TA50011-100]). Left: Cell lysates from untransfected HEK293T cells; Right: Cell lysates from HEK293T cells transfected with [RC218527] using transfection reagent MegaTran 2.0 (Cat# [TT210002]).