

## Product datasheet for **RC206034**

### **PPEF1 (NM\_006240) Human Tagged ORF Clone**

#### **Product data:**

Product Type:	Expression Plasmids
Product Name:	PPEF1 (NM_006240) Human Tagged ORF Clone
Tag:	Myc-DDK
Symbol:	PPEF1
Synonyms:	PP7; PPEF; PPP7C; PPP7CA
Mammalian Cell Selection:	Neomycin
Vector:	pCMV6-Entry (PS100001)
E. coli Selection:	Kanamycin (25 ug/mL)



[View online »](#)

ORF Nucleotide  
Sequence:

>RC206034 ORF sequence  
Red=Cloning site Blue=ORF Green=Tags(s)

TTTTGTAATACGACTCACTATAGGGCGGCCGGAATTCGTCGACTGGATCCGGTACCGAGGAGATCTGCC  
GCC**CGCATCGCC**

ATGGGATGCAGCAGTTCTTCAACGAAAACCAGGAGATCTGACACATCACTGAGAGCTGCGTTGATCATCC  
AGAACTGGTACCGAGGTTACAAAGCTCGACTGAAGGCCAGACAACACTATGCCCTCACCATCTTCCAGTC  
CATCGAATATGCTGATGAACAAGGCCAAATGCAGTTATCCACCTTCTTTTCTTTCATGTTGGAAAACAC  
ACACATATACATAAGGAAGAGCTAGAATTAAGAAATCAGTCTCTTGAAAGCGAACAGGACATGAGGGATA  
GATGGGATTATGTGGACTCGATAGATGTCCAGACTCCTATAATGGTCTCGGCTACAATTTCTCTCAC  
TTGTACGGATATTGATTTACTTCTTGAGGCCTCAAGGAACAACAGATACTTCATGCCATTATGTCTTA  
GAGGTGCTATTTGAAACCAAGAAAGTCTGAAGCAAATGCCGAATTTCACTCACATACAACTTCTCCCT  
CCAAAGAGGTAACAATCTGTGGTATTTGCATGGGAACTGGATGATCTTTTTTGGATCTTCTACAAGAA  
TGGTCTCCCTCAGAGAGGAACCGTATGTTTTAATGGTGACTTTGTAGATCGAGGAAAGAATTCATA  
GAGATCCTAATGATCCTGTGTGTGAGTTTTCTGTCTACCCCAATGACCTGCACCTGAACAGAGGGAACC  
ACGAAGATTTTATGATGAATCTGAGGTATGGCTTACGAAAGAAATTTTGCATAAATATAAGCTACATGG  
AAAAAGAATCTTACAAATCTTGGAGAATTCTATGCCTGGCTCCCAATCGGTACAATCGTTGACAATGAA  
ATCCTGGTCATCCATGGTGGGATATCAGAGACCACAGACTTGAATTTACTCCACCGTGTAGAGAGGAAACA  
AGATGAAATCTGTGCTGATACCACCAACGGAAACAAACAGAGACCATGACACTGACTCGAAGCACAATAA  
AGTAGGTGTGACTTTTAAATGCACATGGAAGAATCAAAACAAATGGATCTCCTACTGAACACTTAACAGAG  
CATGAATGGGAACAGATTATTGATTTCTGTGGAGTGATCCAGAGGCAGGCAAAAATGGCTGTTTTCCAATA  
CGTGCCGAGGAGGGGCTGCTATTTTGGACCAGATGTTACTTCCAAGATCTTAATAAATACCAGTTGAA  
GATGCTCATCAGGTCTCATGAATGTAAGCCCGAAGGGTATGAAATCTGTATGATGGGAAGGTGGTGACT  
ATATTTCTGCTTCTAATTATTATGAAGAAGGCAGCAATCGAGGAGCTTACATCAAATATGTTCTGGTA  
CAACTCTCGATTTTCCAGTACCAAGTAACTAAAGCAACGTGCTTTCAGCCTCTTCGCCAAAGAGTGGA  
TACTATGGAAAACAGCGCCATCAAGATATTAAGAGAGAGAGTGATTTACGAAAAAGTGACCTTACTCGT  
GCTTTCCAACCTCAAGACCACAGAAAATCAGGAAAACCTTCTGTGAGCCAGTGGGCTTTTTGCATGGAGA  
ACATTTTGGGGCTGAACCTACCATGGAGATCCCTCAGTTCGAATCTGGTAAACATAGACCAAAATGGAAA  
CGTTGAATACATGTCCAGCTCCAGAATATCCGCATTGAAAAACCTGTACAAGAGGCTCATTCTACTCTA  
GTTGAACTCTGTACAGATACAGATCTGACCTGGAAATCATATTTAATGCCATTGACACTGATCACTCAG  
GCCTGATCTCCGTGGAAGAATTTCTGTGCCATGTGGAACTTTTTAGTTCTCACTACAATGTTACATTGA  
TGATTTCCAAGTCAATAAGCTTGCCAACATAATGGACTTGAACAAAGATGGAAGCATTGACTTTAATGAG  
TTTTTAAAGGCTTCTATGTAGTGCATAGATATGAAGACTTGATGAAACCTGATGTCACCAACCTTGCC

**ACGCGT**ACGCGGCCGCTCGAGCAGAAAACCTCATCTCAGAAGAGGATCTGGCAGCAAATGATATCCTGGATT  
ACAAGGATGACGACGATAAGGTTTAA



**Reconstitution Method:**

1. Centrifuge at 5,000xg for 5min.
2. Carefully open the tube and add 100ul of sterile water to dissolve the DNA.
3. Close the tube and incubate for 10 minutes at room temperature.
4. Briefly vortex the tube and then do a quick spin (less than 5000xg) to concentrate the liquid at the bottom.
5. Store the suspended plasmid at -20°C. The DNA is stable for at least one year from date of shipping when stored at -20°C.

**RefSeq:** [NM\\_006240.4](#)

**RefSeq Size:** 2873 bp

**RefSeq ORF:** 1962 bp

**Locus ID:** 5475

**UniProt ID:** [O14829](#)

**Cytogenetics:** Xp22.13

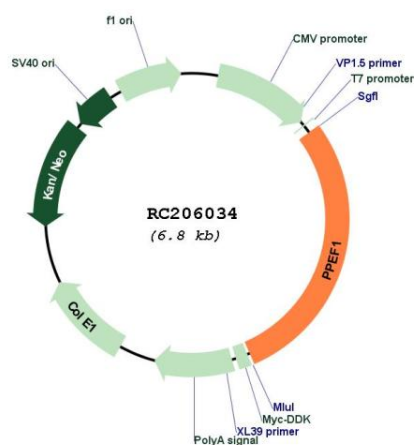
**Domains:** IQ, EFh, Metallophos, PP2Ac

**Protein Families:** Druggable Genome, Phosphatase

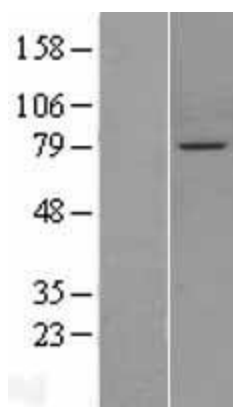
**MW:** 75.8 kDa

**Gene Summary:** This gene encodes a member of the serine/threonine protein phosphatase with EF-hand motif family. The protein contains a protein phosphatase catalytic domain, and at least two EF-hand calcium-binding motifs in its C terminus. Although its substrate(s) is unknown, the encoded protein has been suggested to play a role in specific sensory neuron function and/or development. This gene shares high sequence similarity with the Drosophila retinal degeneration C (rdgC) gene. Several alternatively spliced transcript variants, each encoding a distinct isoform, have been described. [provided by RefSeq, Jul 2008]

## Product images:



Circular map for RC206034



Western blot validation of overexpression lysate (Cat# [LY401877]) using anti-DDK antibody (Cat# [TA50011-100]). Left: Cell lysates from untransfected HEK293T cells; Right: Cell lysates from HEK293T cells transfected with RC206034 using transfection reagent MegaTran 2.0 (Cat# [TT210002]).