

Product datasheet for **RC206032**

RPP38 (NM_006414) Human Tagged ORF Clone

Product data:

Product Type:	Expression Plasmids
Product Name:	RPP38 (NM_006414) Human Tagged ORF Clone
Tag:	Myc-DDK
Symbol:	RPP38
Mammalian Cell Selection:	Neomycin
Vector:	pCMV6-Entry (PS100001)
E. coli Selection:	Kanamycin (25 ug/mL)
ORF Nucleotide Sequence:	>RC206032 representing NM_006414 Red=Cloning site Blue=ORF Green=Tags(s)

TTTTGTAATACGACTCACTATAGGGCGGCCGGGAATTCGTCGACTGGATCCGGTACCGAGGAGATCTGCC
GCC**CGATCGCC**

ATGGCTGCAGCTCCTCAAGCACCGGGCGGGGATCTCTCCGTAAGACGAGACCTCTGGTTGTGAAGACGT
CGTTGAACAACCCATACATCATCCGCTGGAGCGCTCTGGAGAGCGAGGATATGCACTTCATCCTACAGAC
GCTTGAGGACAGGCTTAAAGCTATTGGACTTCAGAAGATTGAAGATAAGAAGAAAAAGAACAAAACACCT
TTTCTGAAAAAAGAAAGCAGAGAGAAATGCAGCATTGCTGTTGATATTAGTGAGAATCTGAAGGAGAAGA
AAACAGATGCTAAGCAGCAAGTGTCAAGGTGGACGCCTGCACACGTCAAGGAGCAGCTTGCCATTGGCGT
TAACGAAGTTACCAGAGCCCTGGAAAGGAGGAACTGCTGTTAGTTCTGGTGTGTAATCAGTCAAGCCT
GCCATGATCACCTCACACTTGATTGATTAGCTTAAGCCTAAGCAGAAGTGTCCCTGCCTGTCAGGTCCCCCGGC
TCAGTGAGAGAATCGCCCCGTCATTGGCTTAAATGTGTTCTAGCCTTGGCGTTCAAAAAGAACCAC
TGACTTTGTGGACGAAGTAAGAGCCATCATCCCCAGAGTCCCCAGTTAAGTGTACCATGGCTTCAAGAC
AGAATTGAAGATCTGGGAAAATTTAGAGACTGAACCTCTGGAAAGCCAAGACAGAGAGCTTTGGACA
CTTCATTTGAAGATCTGTCAAACCTAAGAGAAAGCTTGCTGACGGTCGGCAGGCTTCTGTAACATTACA
ACCCCTTAAAATAAGAAACTGATTCAAAACCTAATAAGATAAGGAAACCACCCAAAAGTAAAAAGCT
ACTCAAAG

ACGCGTACGCGGCCGCTCGAGCAGAACTCATCTCAGAAGAGGATCTGGCAGCAAATGATATCCTGGATT
ACAAGGATGACGACGATAAGGTTTAA



[View online »](#)

Protein Sequence: >RC206032 representing NM_006414
Red=Cloning site Green=Tags(s)

MAAAPQAPGRGSLRKTRPLVVKTSLNNPYIIRWSALESEDMHFILQTLIEDRLKAIGLQKIEDKKNKTP
 FLKKEKSEKCSIAVDISENLKEKKTDAKQVSGWTPAHVRKQLAIGVNEVTRALERRELLLVVCKSVKP
 AMITSHLIQLSLRSVPACQVPRLSERIAPIVIGLKCVLALAFKNTTDFVDEVRAIIPRVPVSLVSPWLQD
 RIEDSGENLETEPLESQDRELLDTSFEDLSKPKRKLADGRQASVTLQPLIKKLIIPNPNKIRKPPKSKKA
 TPK

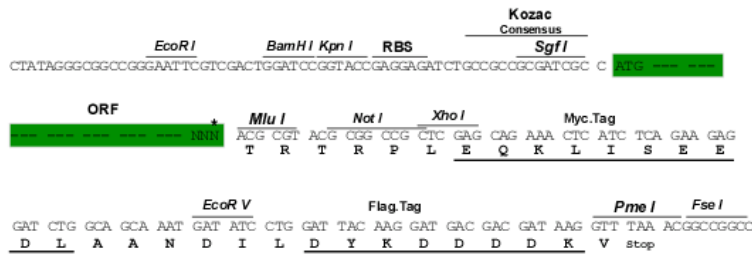
TRTRPLEQKLISEEDLAANDILDYKDDDDKV

Chromatograms: https://cdn.origene.com/chromatograms/ja1513_h06.zip

Restriction Sites: Sgfl-MluI

Cloning Scheme:

Cloning sites used for ORF Shuttling:



* The last codon before the Stop codon of the ORF

ACCN: NM_006414

ORF Size: 849 bp

OTI Disclaimer: The molecular sequence of this clone aligns with the gene accession number as a point of reference only. However, individual transcript sequences of the same gene can differ through naturally occurring variations (e.g. polymorphisms), each with its own valid existence. This clone is substantially in agreement with the reference, but a complete review of all prevailing variants is recommended prior to use. [More info](#)

OTI Annotation: This clone was engineered to express the complete ORF with an expression tag. Expression varies depending on the nature of the gene.

Components: The ORF clone is ion-exchange column purified and shipped in a 2D barcoded Matrix tube containing 10ug of transfection-ready, dried plasmid DNA (reconstitute with 100 ul of water).

Reconstitution Method:

1. Centrifuge at 5,000xg for 5min.
2. Carefully open the tube and add 100ul of sterile water to dissolve the DNA.
3. Close the tube and incubate for 10 minutes at room temperature.
4. Briefly vortex the tube and then do a quick spin (less than 5000xg) to concentrate the liquid at the bottom.
5. Store the suspended plasmid at -20°C. The DNA is stable for at least one year from date of shipping when stored at -20°C.

RefSeq: [NM_006414.5](#)

RefSeq Size: 991 bp

RefSeq ORF: 852 bp

Locus ID: 10557

UniProt ID: [P78345](#)

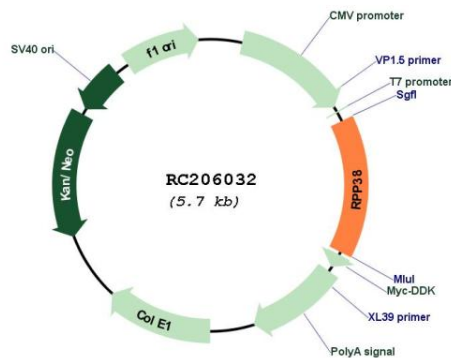
Cytogenetics: 10p13

Protein Families: Druggable Genome

MW: 31.7 kDa

Gene Summary: Component of ribonuclease P, a ribonucleoprotein complex that generates mature tRNA molecules by cleaving their 5'-ends (PubMed:9037013, PubMed:9630247, PubMed:10444065, PubMed:30454648). Also a component of the MRP ribonuclease complex, which cleaves pre-rRNA sequences (PubMed:28115465).[UniProtKB/Swiss-Prot Function]

Product images:



Circular map for RC206032