

Product datasheet for RC206028

KRR1 (NM_007043) Human Tagged ORF Clone

Product data:

Product Type:	Expression Plasmids
Product Name:	KRR1 (NM_007043) Human Tagged ORF Clone
Tag:	Myc-DDK
Symbol:	KRR1
Synonyms:	HRB2; RIP-1
Mammalian Cell Selection:	Neomycin
Vector:	pCMV6-Entry (PS100001)
E. coli Selection:	Kanamycin (25 ug/mL)
ORF Nucleotide Sequence:	>RC206028 representing NM_007043 Red=Cloning site Blue=ORF Green=Tags(s)

TTTTGTAATACGACTCACTATAGGGCGGCCGGAATTCGTCGACTGGATCCGGTACCGAGGAGATCTGCC
GCC**CGATCGCC**

ATGGCGTCTCCCTCGCTGGAGCGGCCAGAAAAAGGCGCTGAAAAAGTGAATTCGTAACCCAGAAGCCGA
AGCCGGAGAACCAAGATGAATCAGAACTCCTTACGGTTCCTGATGGTTGGAAGGAACCAGCTTTTCCAA
AGAGGACAATCCCAGAGGACTTTTGGAGGAGAGCAGTTTCGCAACTTTGTTCCAAAATACAGGGAAGCT
TACTTGAAGAGTGTGGCCATTGGTGCAGAAAGCCTTAAATGAACATCATGTTAATGCAACCCTGGACC
TGATCGAAGGCAGCATGACTGTTTGTACTACAAAGAAGACTTTTGATCCATATATCATCATTAGGGCCAG
AGATCTGATAAACTGTTAGCAAGGAGTGTTCATTTGAACAGGCAGTACGAATTCCTCAGGATGATGTT
GCATGTGACATCATTAAAATAGTTCTTTAGTAAGGAATAAAGAGAGATTTGTAACGAAGACAACGGC
TTATTGGTCCCAAAGGATCTACATTGAAGGCATTGGAACCTTAACTAATTGTTACATTATGGTTACGGG
AAACACAGTTTCAGCCATTGGACCTTTTAGTGGCTTAAAAGAGGTTAGAAAAGTAGTCTTGATACTATG
AAGAATATTCATCCAATTTATAACATTAAGCTTAAATGATTAAGAGAGAGTTGGCAAAGATTCTGAAT
TACGATCACAAGTTGGGAGAGATTTTGGCCACAGTTCAAGCACAAAAATGTGAATAACGCAAGGAACC
AAAGAAAAAACTGTTAAGAAAGAATATACGCCATTCCCACCACCACAACCAGGAAGTCAGATCGATAAA
GAATTGGCTAGTGGTGAATACTTTTGAAGGCAAATCAGAAGAAGCGGCAGAAAAATGGAAGCAATAAAGG
CTAAACAAGCAGAAGCCATCAGTAAGAGACAAGAGGAAAAGAAACAAGCATTTATTCCACCTAAGGAAAA
ACCAATTGTGAAACCTAAGGAAGCTTCTACTGAAGCTAAAATTGATGTGGCCAGCATCAAGGAAAAGGTT
AAGAAAGCAAAGAATAAGAACTGGGAGCTTACAGCTGAAGAAATTGCACTTAAGATGGAGGCAGATG
AAAAGAAAAAGAAGAAAAAAG

ACGCGTACGCGGCCGCTCGAGCAGAAACTCATCTCAGAAGAGGATCTGGCAGCAATGATATCCTGGATT
ACAAGGATGACGACGATAAGGTTTAA



[View online »](#)

Protein Sequence: >RC206028 representing NM_007043
Red=Cloning site Green=Tags(s)

MASPSLERPEKGAGKSEFRNQPKPENQDESELLTVPDGWKEPAFSKEDNPRGLLEESSFATLFPKYREA
 YLKECWPLVQKALNEHHVNATLDLIEGSMTVCTTKKTFDPYIIIRARDLIKLLARSVSEQAVRILQDDV
 ACDI IKIGSLVRNKERFVKRRQRLIGPKGSTLKALELLTNCYIMVQGNTVSAIGPF SGLKEVRKVVLDTM
 KNIHPIYNIKSLMIKRELAKDSELSQSWERFLPQFKHKNVNKRKEPKKKT VKKEYTPFPFPQPGSQIDK
 ELASGEYFLKANQKQRQKMEAIKAKQAEAISKRQEERNKAFIPPKKEPIVKPKEASTEAKIDVASIKEKY
 KKAKNKLGALTAEEIALKMEADEKKKKKKK

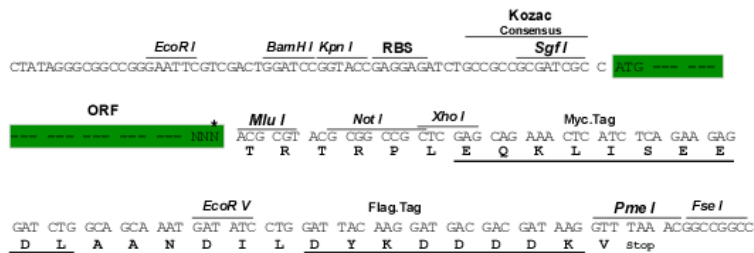
TRTRPLEQKLISEEDLAANDILDYKDDDDKV

Chromatograms: https://cdn.origene.com/chromatograms/mg2950_h01.zip

Restriction Sites: SgfI-MluI

Cloning Scheme:

Cloning sites used for ORF Shuttling:



* The last codon before the Stop codon of the ORF

ACCN: NM_007043

ORF Size: 1143 bp

OTI Disclaimer: The molecular sequence of this clone aligns with the gene accession number as a point of reference only. However, individual transcript sequences of the same gene can differ through naturally occurring variations (e.g. polymorphisms), each with its own valid existence. This clone is substantially in agreement with the reference, but a complete review of all prevailing variants is recommended prior to use. [More info](#)

OTI Annotation: This clone was engineered to express the complete ORF with an expression tag. Expression varies depending on the nature of the gene.

Components: The ORF clone is ion-exchange column purified and shipped in a 2D barcoded Matrix tube containing 10ug of transfection-ready, dried plasmid DNA (reconstitute with 100 ul of water).

Reconstitution Method:

1. Centrifuge at 5,000xg for 5min.
2. Carefully open the tube and add 100ul of sterile water to dissolve the DNA.
3. Close the tube and incubate for 10 minutes at room temperature.
4. Briefly vortex the tube and then do a quick spin (less than 5000xg) to concentrate the liquid at the bottom.
5. Store the suspended plasmid at -20°C. The DNA is stable for at least one year from date of shipping when stored at -20°C.

RefSeq: [NM_007043.5](#)

RefSeq Size: 3357 bp

RefSeq ORF: 1146 bp

Locus ID: 11103

UniProt ID: [Q13601](#)

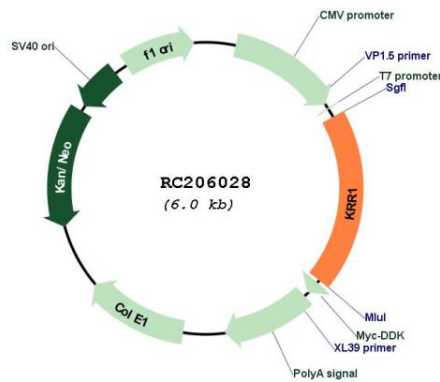
Cytogenetics: 12q21.2

Domains: KH

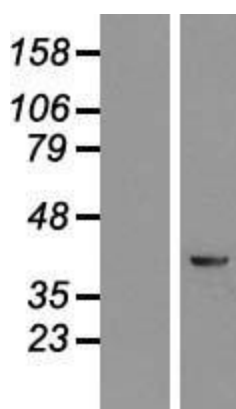
MW: 43.5 kDa

Gene Summary: Required for 40S ribosome biogenesis. Involved in nucleolar processing of pre-18S ribosomal RNA and ribosome assembly (By similarity).[UniProtKB/Swiss-Prot Function]

Product images:



Circular map for RC206028



Western blot validation of overexpression lysate (Cat# [LY416242]) using anti-DDK antibody (Cat# [TA50011-100]). Left: Cell lysates from untransfected HEK293T cells; Right: Cell lysates from HEK293T cells transfected with RC206028 using transfection reagent MegaTran 2.0 (Cat# [TT210002]).