

## Product datasheet for **RC206024**

### MTAP (NM\_002451) Human Tagged ORF Clone

#### Product data:

Product Type:	Expression Plasmids
Product Name:	MTAP (NM_002451) Human Tagged ORF Clone
Tag:	Myc-DDK
Symbol:	MTAP
Synonyms:	BDMF; c86fus; DMSFH; DMSMFH; HEL-249; LGMBF; MSAP
Mammalian Cell Selection:	Neomycin
Vector:	pCMV6-Entry (PS100001)
E. coli Selection:	Kanamycin (25 ug/mL)
ORF Nucleotide Sequence:	>RC206024 ORF sequence Red=Cloning site Blue=ORF Green=Tags(s)

TTTTGTAATACGACTCACTATAGGGCGCCGGGAATTCGTCGACTGGATCCGGTACCGAGGAGATCTGCC  
GCC**CGATCGCC**

ATGGCCTCTGGCACCACCACCACCGCCGTGAAGATTGGAATAATTGGTGGAACAGGCCTGGATGATCCAG  
AAATTTTAGAAGGAAGAACTGAAAAATATGTGGATACTCCATTTGGCAAGCCATCTGATGCCTTAATTTT  
GGGAAGATAAAAAATGTTGATTGCATCCTCTTGCAAGGCATGGAAGGCAGCACACCATCATGCCTTCA  
AAGGTCAACTACCAGGCGAACATCTGGGCTTTGAAGGAAGAGGGCTGTACACATGTCATAGTGACCACAG  
CTTGTGGCTCCTTGAGGGAGGAGATTGAGCCCGCGATATTGTCATTATTGATCAGTTTCATTGACAGGAC  
CACTATGAGACCTCAGTCCTTCTATGATGGAAGTCATTCTTGTGCCAGAGGAGTGTGCCATATCCCAATG  
GCTGAGCCGTTTTGCCAAAAACGAGAGAGGTTCTTATAGAGACTGCTAAGAAGCTAGGACTCCGGTGCC  
ACTCAAAGGGGACAATGGTCACAATCGAGGGACCTCGTTTTAGCTCCCGGCAGAAAAGCTTCATGTTCCG  
TACCTGGGGGGCGGATGTTATCAACATGACCACAGTTCAGAGGTTGGTCTTGTCTAAGGAGGCTGGAATT  
TGTTACGCAAGTATCGCCATGGCGACAGATTATGACTGCTGGAAGGAGCACGAGGAAGCAGTTTCGGTGG  
ACCGGGTCTTAAAGACCTGAAAGAAAACGCTAATAAAGCCAAAAGCTTACTGCTCACTACCATACCTCA  
GATAGGGTCCACAGAATGGTCAGAAACCCTCCATAACCTGAAGAATATGGCCAGTTTCTGTTTTATTA  
CCAAGACAT

**ACGCGT**ACGCGGGCCGCTCGAGCAGAAACTCATCTCAGAAGAGGATCTGGCAGCAAATGATATCCTGGATT  
ACAAGGATGACGACGATAAGGTTTAA



[View online »](#)

**Protein Sequence:** >RC206024 protein sequence  
Red=Cloning site Green=Tags(s)

MASGTTTTAVKIGIIGGTGLDDPEILEGRTEKYVDTPFGKPSDALILGKIKNVDCILLARHGRQHTIMPS  
 KVNYQANIWALKEEGTHVIVTTACGSLREEIQPGDIVIIDQFIDRTTMRPQSFYDGSHCARGVCHIPM  
 AEPFCPKTREVLIETAKKLGRLCHSKGTMVTIEGPRFSSRAESFMFRTWGADVINMTTVPEVLLAKEAGI  
 CYASIAMATDYDCWKEHEEAVSVDRVLKTLKENANKAKSLLLLTTIPQIGSTEWSETLHNLKNMAQFSVLL  
 PRH

TRTRPLEQKLISEEDLAANDILDYKDDDDKV

**Chromatograms:** [https://cdn.origene.com/chromatograms/mk6072\\_f07.zip](https://cdn.origene.com/chromatograms/mk6072_f07.zip)

**Restriction Sites:** SgfI-MluI

**Cloning Scheme:**



**ACCN:** NM\_002451

**ORF Size:** 849 bp

**OTI Disclaimer:** The molecular sequence of this clone aligns with the gene accession number as a point of reference only. However, individual transcript sequences of the same gene can differ through naturally occurring variations (e.g. polymorphisms), each with its own valid existence. This clone is substantially in agreement with the reference, but a complete review of all prevailing variants is recommended prior to use. [More info](#)

**OTI Annotation:** This clone was engineered to express the complete ORF with an expression tag. Expression varies depending on the nature of the gene.

**Components:** The ORF clone is ion-exchange column purified and shipped in a 2D barcoded Matrix tube containing 10ug of transfection-ready, dried plasmid DNA (reconstitute with 100 ul of water).

**Reconstitution Method:**

1. Centrifuge at 5,000xg for 5min.
2. Carefully open the tube and add 100ul of sterile water to dissolve the DNA.
3. Close the tube and incubate for 10 minutes at room temperature.
4. Briefly vortex the tube and then do a quick spin (less than 5000xg) to concentrate the liquid at the bottom.
5. Store the suspended plasmid at -20°C. The DNA is stable for at least one year from date of shipping when stored at -20°C.

**RefSeq:** [NM\\_002451.4](#)

**RefSeq Size:** 4937 bp

**RefSeq ORF:** 852 bp

**Locus ID:** 4507

**UniProt ID:** [Q13126](#)

**Cytogenetics:** 9p21.3

**Domains:** Mtap\_PNP

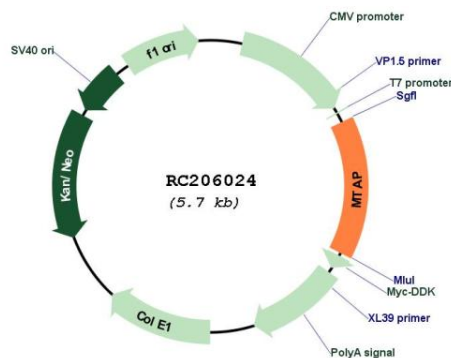
**Protein Families:** Druggable Genome

**Protein Pathways:** Cysteine and methionine metabolism, Metabolic pathways

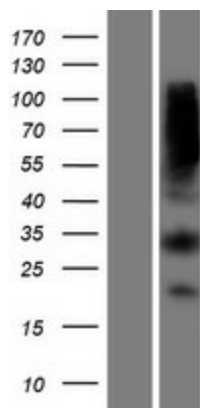
**MW:** 31.3 kDa

**Gene Summary:** This gene encodes an enzyme that plays a major role in polyamine metabolism and is important for the salvage of both adenine and methionine. The encoded enzyme is deficient in many cancers because this gene and the tumor suppressor p16 gene are co-deleted. Multiple alternatively spliced transcript variants have been described for this gene, but their full-length natures remain unknown. [provided by RefSeq, Jul 2008]

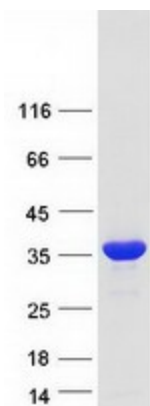
### Product images:



Circular map for RC206024



Western blot validation of overexpression lysate (Cat# [LY419313]) using anti-DDK antibody (Cat# [TA50011-100]). Left: Cell lysates from untransfected HEK293T cells; Right: Cell lysates from HEK293T cells transfected with RC206024 using transfection reagent MegaTran 2.0 (Cat# [TT210002]).



Coomassie blue staining of purified MTAP protein (Cat# [TP306024]). The protein was produced from HEK293T cells transfected with MTAP cDNA clone (Cat# RC206024) using MegaTran 2.0 (Cat# [TT210002]).