

Product datasheet for RC206023

PCDH8 (NM_002590) Human Tagged ORF Clone

Product data:

Product Type:	Expression Plasmids
Product Name:	PCDH8 (NM_002590) Human Tagged ORF Clone
Tag:	Myc-DDK
Symbol:	PCDH8
Synonyms:	ARCADLIN; PAPC
Mammalian Cell Selection:	Neomycin
Vector:	pCMV6-Entry (PS100001)
E. coli Selection:	Kanamycin (25 ug/mL)
ORF Nucleotide Sequence:	>RC206023 ORF sequence Red=Cloning site Blue=ORF Green=Tags(s)

TTTTGTAATACGACTCACTATAGGGCGGCCGGAATTCGTCGACTGGATCCGGTACCGAGGAGATCTGCC
GCC**CGATCGCC**

ATGAGTCTGTGAGGCGTTGGGGCAGCCCTGCCTTTTCCCTTGCAGCTCTTCAGCCTCTGCTGGGTGC
TCTCAGTGGCCAGAGCAAACAGTCCGATACAGCACCTTCGAGGAGGATGCCCCGGCAGGTCATCGG
GACCTGGCCGAGGACCTGCACATGAAAGTATCGGGTGACACAAGCTTCCGCCTGATGAAGCAATTCAAC
AGCTCTCTGCTCCGGGTGCGGAAGGCGACGGCAGCTGACCGTTCGGGGACGCCGCTGGACCGGAGC
GGCTGTGTGGCCAGGCCCGCAGTGCCTGCTGGCCTTCGATGTGGTTCAGCTTCTCGCAGGAGCAGTCCG
GCTGGTGCACGTGGAGGTAGAGGTGAGGGACGTCAACGACCACGCGCCGCTTCCCCAGGGCCAGATC
CCGGTAGAGGTGTCCGAGGGTGCAGGACGTGGGCACGCGCATCCCCTTGGAGGTGCCGGTGGACGAGGACG
TGGGCGCAACCGGGTGCAGACCGTGCAGCTGGCCGAGCCGACAGCCCTTTCGCGTGGAGCTGCAGAC
GCGAGCGGACGGCGCTCAGTGCAGACCTGGTGTGCTGCAGGAGCTGGACCGGAGAGCCAGGCCGCC
TACAGCCTGGAGCTGGTGGCCAGGACGGCGCCGCCCGCGCTCCGCCACGGCTGCCCTCAGCGTGC
GCGTCTGGATGCGAATGACCACAGCCCGCCTTCCCGCAGGGCGCCGTGGCCGAAGTGGAGCTGGCGGA
AGACGCGCCCGTGGGCTCCCTGCTTCTCGACCTGGACGCAGCCGACCCCGACGAGGGACCTAACGGCGAC
GTGGTGTTCGCAATTTGGCGCCCGCACCCGCGGAGGCGCGCCCTCTTTCGGCTTGACCCGCGATCAG
GCCGCTCACCCTGGCCGGCCCGTGGACTACGAGCGTACGAGACCTACGAGCTGGACGTGCGGGCGCA
GGACCGGGACCCGGGCCCGCGCTGCCACCTGCAAGGTATCGTGCATCCGAGACGTCAATGACAAC
GCACCCGACATCGCCATCACCCGCTGGCCGCCAGGCGCGCCGCAACCTCACCTTCGCGCTGCCG
CCGCCCGCTGCACTCGGGGAGCGGACGCTAGCTCGCCGGCGGAGCCGGGACCGCGGAGGCTGGTGC
CACTTCGCTGGTCCGGAGGGGGCGCGCGAGAGCCTGGTGGCCCTGGTTCAGCACCTCGGACAGGGAC
TCGGGCGCAACGGCAAGTGCCTGCGCCCTATGGGCACGAGCACTTCGGTGCAGCCGCCCTACG
CGGGCAGTACCTGGTGGTACCAGCGCGTTCGTTGGACCGGAACGCATCGCCGAGTACAATTGACGCT
GGTGGCCGAGGATCGCGCGCCCGCTGCGCACAGTGCAGCCCTACCGGTGCGTGTGGCGCAGG



AACGACAACGCGCCGCTCTTACGCGGGCCGGTCTATGAGGTGTCGGTGC GCGAGAACAACCCGCCAGGCG
 CCTACCTGGCCACGGTGGCCGCCCGCGACCCGGGACCTGGGCCGCAACGGCCAGGTACCTACCGGCTGCT
 GGAGGCCGAGGTGGCCGCGCCGGGGGCCCGTGTCCACTTATGTCTCGGTGGACCCAGCTACCGGAGCC
 ATCTACGCGTGCAGCTTTCGACTATGAGACGCTGCGCAACTCGACGTTTCGATCCAAGCTAGCGACG
 GCGGCTCCCTCAGCTTTCAGCAGCGCCCTAGTGCAAGTGC GCGTGTGGACCAGAACGACCATGCGCC
 AGTCTTGGTGCACCCGGCGCCAGCCAATGGTCCCTAGAAGTGGCGGTGCCTGGGCGACCGCAAAGGAC
 ACGGTTGTGGCCGTGTGCAGGCCGGGATGCAGACGAGGGAGCCAACGGGGAGCTGGCGTTTCGAGCTGC
 AGCAGCAGGAGCCGCGCAAGCCTTCGCCATCGGCCGCCGACGGGGAGATACTGCTCACCGGCCACT
 CTCGACGAGGCCACCCGGTGC GCTGTTCAGGGCGCTCCTGGTCATATCCGACGGCGGCGTCCCCGCTC
 ACCACCACCGCAACTGTCAGTTCGTGGTAACAGCAGGGGGCGGGCGTGGGCCGGCTGCGCTGCCAGTG
 CAGGAAGCCCGGAGCGTTCGCCCGCCTGGTCTCGGCTCGGGGTGCCGGTTCGGTGTGCAATGGGA
 CACGCCGCTGATCGTCATCATCGTGTGGCCGGGAGCTGCACGCTGCTGCTGGCCGCATCATCGCCATC
 GCCACCACCTGCAACCGCCGAAGAAGGAGGTGCGCAAAGGGGGGCCCTCCGGGAAGAGCGCCCGGG
 CGGCGGGCGGAGCCTCGGCTCCCGGCTCCCGGAGGAGCCCGCCGGGAGCCGGGCCAGGCCCAA
 CATGTTTCGACGTGCTCACCTTCCCTGGCACCGGCAAAGCGCCCTTTGGCTGCCCCGCGGCGACGCGCT
 CCGCTGCGGTGCGCCGCGCCGAAGTGC GGGCTCAGAGGGCGGACGCCACTGGGAAAGCGCCTGTC
 ACTTCGAGGGGACGACGCGGCTCCGCGCGCGCACGCCGAGCCCTACGGTGCCTCCCCGGGTTTTGAAA
 GGAGCCGGCGCCCTGTGGCGGTGTGGAAGGACACTCCTTCAACACCATTTCTGGCAGAGAAGCAGAG
 AAGTTCAGCGCAAGACAGCGGTAAAGGGGACAGTGA TTTCAACGACAGCGATTCCGACATCAGCGGG
 ACGCTCTGAAAAGGATCTCATCAACCACATGCAGAGTGGACTGTGGCGTGCACCGCTGAGTGTAAAGT
 CCTGGGCCACTTGACCGCTGCTGGAGCCATCCTGCAGCGGGCCCAACGCACATCCATCGCCTCACCCA
 CCAGCCAGATGTCAACCTTCTGTAAGAGCAGTCACTGCCTCGGGATCCTCTGCGCAGGGACAATTACT
 ACCAGGCCAGTGC CCAAGACAGTGGGGCTGCAGAGCGTCTATGAGAAAGTACTGCACAGAGATATGA
 CAGGACAGTCACTCTGCTCTCCCTCCCGTCCAGGGAGGCTCCAGACCTGCAGGAGATTGGAGTACCC
 CTCTACCAGTCCCTCCTGGCAGGTACCTGTCCCCGAAGAAGGGAGCCAATGAAAATGTG

ACGCGTACGCGGCCGCTCGAGCAGAACTCATCTCAGAAGAGGATCTGGCAGCAAATGATATCCTGGATT
 ACAAGGATGACGACGATAAGGTTTAA

Protein Sequence:

>RC206023 protein sequence
 Red=Cloning site Green=Tags(s)

MSPVRRWGSPCLFPLQLFSLCWVLSVAQSKTVRYSTFEEDAPGTVIGTLAEDLHMKVSGDTSFRLMKQFN
 SSLLRVREGDQGLTVGDAGLDRERLCGAPQCVLAFDVVFSQEQFRLVHVEVEVRDNDHAPRFPRAQI
 PVEVSEGAAGVTRIPLEVPVDEDVANGLQTVRLAEPHSPFRVELQTRADGAQCADLVLLQELDRESQAA
 YSLELVAQDGGRRPSSATAALSVRVLDANDHSPAFPQGA VEVELAEDAPVGSLLLDLDAADPDEGPNGD
 VVFAFGARTPPEARRLFRLDPRSGRLTAGPVDYERQDTYELDVRAQDRGPGPRAATCKVIRIRDVNDN
 APDIAITPLAAGPATS PF AAAAAAAAAALGGADASSPAGAGTPEAGATSLVPEGAARESLVALVSTSDRD
 SGANGQVRCALYGHEHFR LQPAYAGSYLVVTAASLDRE RIAEYNLTLVAEDRGAPPLRTV RPYTVRVGDE
 NDNAPLFRPVEVSVRENNPPGAYLATVAARDRLGRNGQVYRLLAEVGRAGGAVSTYVSDPATGA
 IYALRSFDYETLRQLDVRIQASDGGSPQLSSSALVQVRVLDQNDHAPVLVHPAPANGSLEVAVPGRATKD
 TVVARVQARDADEGANGELAFELQQQEPREAF AIGRRTGEILLTGDLSEQEPGRVFRALLVISDGGRPPL
 TTTATVSVFVVTAGGGRPAAPASAGSPERSRPPGSRLGVS GSVLQWDTPLIVIIVLGASCTLLAAIIAI
 ATTCNRRKKEVRKGGALREERPGAAGGGASAPGSPEEAARGAGPRPNMFDVLTFFPGTGKAPFGCPAADAP
 PPAVAAA E VPGSEGG SATGESACHFEGQQLRG AHAEPYGASPGFGKEPAPPVAVWKGHSFNTISGREAE
 KFSGKDSGKSDSDFNDSDSISGDALKKDLINHM QSGLWACTAECKILGHSDRCWSPSCSGPNAHPSHP
 PAQMSTFCCKSTSLPRDPLRRDNYQAQLPKTVGLQSVY EKVLRHDYDRTVTLSPRPRGRLPDLQEIGVP
 LYQSPPGRYLSPKKGANENV

TRTRPLEQKLISEEDLAANDILDYKDDDDKV

Chromatograms:

https://cdn.origene.com/chromatograms/mk6835_e05.zip

Restriction Sites: SgfI-MluI

Cloning Scheme:



ACCN: NM_002590

ORF Size: 3210 bp

OTI Disclaimer: The molecular sequence of this clone aligns with the gene accession number as a point of reference only. However, individual transcript sequences of the same gene can differ through naturally occurring variations (e.g. polymorphisms), each with its own valid existence. This clone is substantially in agreement with the reference, but a complete review of all prevailing variants is recommended prior to use. [More info](#)

OTI Annotation: This clone was engineered to express the complete ORF with an expression tag. Expression varies depending on the nature of the gene.

Components: The ORF clone is ion-exchange column purified and shipped in a 2D barcoded Matrix tube containing 10ug of transfection-ready, dried plasmid DNA (reconstitute with 100 ul of water).

Reconstitution Method:

1. Centrifuge at 5,000xg for 5min.
2. Carefully open the tube and add 100ul of sterile water to dissolve the DNA.
3. Close the tube and incubate for 10 minutes at room temperature.
4. Briefly vortex the tube and then do a quick spin (less than 5000xg) to concentrate the liquid at the bottom.
5. Store the suspended plasmid at -20°C. The DNA is stable for at least one year from date of shipping when stored at -20°C.

RefSeq: [NM_002590.4](#)

RefSeq Size: 4077 bp

RefSeq ORF: 3213 bp

Locus ID: 5100

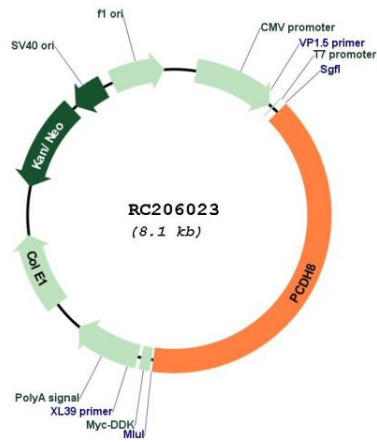
UniProt ID: [O95206](#)

Cytogenetics: 13q14.3
Domains: CA

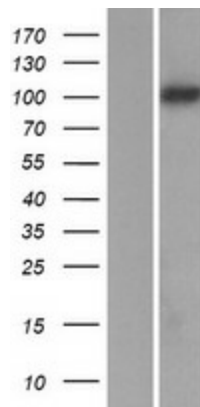
Protein Families: Transmembrane
MW: 113 kDa

Gene Summary: This gene belongs to the protocadherin gene family, a subfamily of the cadherin superfamily. The gene encodes an integral membrane protein that is thought to function in cell adhesion in a CNS-specific manner. Unlike classical cadherins, which are generally encoded by 15-17 exons, this gene includes only 3 exons. Notable is the large first exon encoding the extracellular region, including 6 cadherin domains and a transmembrane region. Alternative splicing yields isoforms with unique cytoplasmic tails. [provided by RefSeq, Jul 2008]

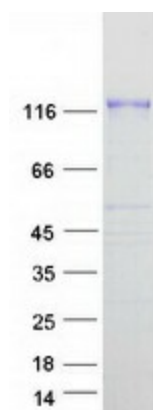
Product images:



Circular map for RC206023



Western blot validation of overexpression lysate (Cat# [LY419230]) using anti-DDK antibody (Cat# [TA50011-100]). Left: Cell lysates from untransfected HEK293T cells; Right: Cell lysates from HEK293T cells transfected with RC206023 using transfection reagent MegaTran 2.0 (Cat# [TT210002]).



Coomassie blue staining of purified PCDH8 protein (Cat# [TP306023]). The protein was produced from HEK293T cells transfected with PCDH8 cDNA clone (Cat# RC206023) using MegaTran 2.0 (Cat# [TT210002]).