

Product datasheet for **RC206018**

TPTE (NM_199259) Human Tagged ORF Clone

Product data:

Product Type:	Expression Plasmids
Product Name:	TPTE (NM_199259) Human Tagged ORF Clone
Tag:	Myc-DDK
Symbol:	TPTE
Synonyms:	CT44; PTEN2
Mammalian Cell Selection:	Neomycin
Vector:	pCMV6-Entry (PS100001)
E. coli Selection:	Kanamycin (25 ug/mL)



[View online »](#)

ORF Nucleotide Sequence:

>RC206018 ORF sequence
 Red=Cloning site Blue=ORF Green=Tags(s)

TTTTGTAATACGACTCACTATAGGGCGGCCGGAATTCGTCGACTGGATCCGGTACCGAGGAGATCTGCC
 GCC**CGGATCGCC**

ATGAATGAAAGTCTGATCCGACTGACCTGGCGGGAGTCATCATTGAGCTCGGCCCAATGACAGTCCAC
 AGACAAGTGAATTTAAAGGAGCAACCGAGGAGGCACCTGCGAAAGAAAGTGTGTTAGCACGACTTTCCAA
 GTTTGAAGTTGAAGATGCTGAAAATGTTGCTTCATATGACAGCAAGATTAAGAAAATTGTCATTCAATT
 GTATCATCCTTTGCATTTGGACTATTTGGAGTTTTCTGGTCTTACTGGATGTCCTCATCCTTGCCG
 ACCTAATTTTCACTGACAGCAAACCTTTATTCCTTTGGAGTATCGTTCTATTTCTAGCTATTGCCTT
 ATTTTTTCTCATGGATGTTCTTCTCGAGTATTTGTAGAAAGGAGACAGCAGTATTTTTCTGACTTATTT
 AACATTTTAGATACTGCCATTATTGTGATTCTTCTGCTGGTTGATGTCGTTTACATTTTTTTGACATTA
 AGTTGCTTAGGAATATCCAGATGGACACATTTACTTCGACTTCTACGACTTATTATTCTGTTAAGAA
 TTTTCATCTGTTTCATCAAAAAGACAACCTGAAAAGCTGATAAGAAGGGGGTTTCAGAAAACAAAAGG
 CGATACACAAGGGATGGATTTGACCTAGACCTCACTTACGTTACAGAACGTATTATTGCTATGTCATTTT
 CATCTTCTGGAAGGCAGTCTTTCTATAGAAATCCAATCAAGGAAGTTGTGCGGTTTCTAGATAAGAAACA
 CCGAAACCACTATCGAGTCTACAATCTATGCAAGTAAAAGAGCTTACGATCCTAAGCACTTCCATAATAGG
 GTCGTTAGAATCATGATTGATGATCATAATGTCCCACTCTACATCAGATGGTGGTTTTCCCAAGGAAG
 TAAATGAGTGGATGGCTCAAGATCTTGA AACATCGTAGCGATTCAGTAAAGGAGGCACAGATAGAAC
 AGGAACTATGTTTGTGCCTTCTTATTGCCTCTGAAATATGTTCAACTGCAAAGGAAAGCCTGTATTAT
 TTTGGAGAAAGGCGAACAGATAAAACCCACAGCGAAAAATTTAGGGAGTAGAACTCCTTCTCAGAAGA
 GATATGTTGCATATTTTGACAAGTGAACATCTCAACTGGAATCTCCCTCCAAGACGGATACTCTT
 TATAAAACACTTCATTATTTATTCGATTCTCGTTATGTACGTGATCTAAAAATCCAATAGAAATGGAG
 AAAAAGGTTGTCTTTTCCACTATTTTATTAGGAAATGTTGCGTACTTGATAACATTACAACAGACAAAA
 TATTAATTGATGATTCGACGGTCCACCTCTGATGATGATGTAAGTGCAGTTTTTCTATTGCAATCT
 TCCTACATACTATGACAATTGCTCATTTTACTTCTGGTTCACACATCTTTATTGAAAATAACAGGCTT
 TATCTACAAAAAATGAATTGGATAATCTACATAAAACAAAAGCAGGAGAAATTTATCCATCAGATTTTG
 CCGTGGAGATACTTTTGGCGAGAAAATGACTTCCAGTATGTTGTAGCTGGATCCGAT

ACGCGTACGCGGCCGCTCGAGCAGAAACTCATCTCAGAAGAGGATCTGGCAGCAAATGATATCCTGGATT
 ACAAGGATGACGACGATAAGGTTTAA

Protein Sequence:

>RC206018 protein sequence
 Red=Cloning site Green=Tags(s)

MNESPDPTDLAGVIIELGPNDSPQTSEFKGATEEAPAKESVLRRLSKFEVEDAENVASYDSKIKKIVHSI
 VSSFAFLGFGVFLVLLDVTLLADLIFTDSKLYIPLEYRSISLAIALFFLMDVLLRVFVERRRQYFSDLF
 NILDTAIIIVILLVLDVVIYFFDIKLLRNIPRWTHLLRLLRLIILLRIFHLFHQKRQLEKLI RRRVSENKR
 RYTRDGFDLDTYVTERIIAMSPSSGRQSFYRNPIKEVVRFLDKKHRNHRYVYVNLCSERAYDPKHFHNR
 VVRIMIDDHNVPTLHQMVVFTKEVNEWMAQDLENIVAIHCKGGTDRGTGMVCAFLIASEICSTAKESLYY
 FGERRTDKTHSEKFQGVETPSQKRYVAYFAQVKHLYNWNLP PRRILFIKHFIIYSIPRYVRDLKIQIEME
 KKVVVSTISL GKCSVLDNITTDKILIDVFDGPPLYDDVKVQFFYSNLPYDNC SFYFWLHTSFIENNRL
 YLPKNELDNLHKQKARRIYPSDFAVEILFGEKMTSSD VVAGSD

TRTRPLEQKLISEEDLAANDILDYKDDDDKV

Chromatograms:

https://cdn.origene.com/chromatograms/mk6319_e05.zip

Restriction Sites:

Sgfl-Mlul

Cloning Scheme:



ACCN: NM_199259

ORF Size: 1599 bp

OTI Disclaimer: Due to the inherent nature of this plasmid, standard methods to replicate additional amounts of DNA in E. coli are highly likely to result in mutations and/or rearrangements. Therefore, OriGene does not guarantee the capability to replicate this plasmid DNA. Additional amounts of DNA can be purchased from OriGene with batch-specific, full-sequence verification at a reduced cost. Please contact our customer care team at custsupport@origene.com or by calling 301.340.3188 option 3 for pricing and delivery.

The molecular sequence of this clone aligns with the gene accession number as a point of reference only. However, individual transcript sequences of the same gene can differ through naturally occurring variations (e.g. polymorphisms), each with its own valid existence. This clone is substantially in agreement with the reference, but a complete review of all prevailing variants is recommended prior to use. [More info](#)

OTI Annotation: This clone was engineered to express the complete ORF with an expression tag. Expression varies depending on the nature of the gene.

Components: The ORF clone is ion-exchange column purified and shipped in a 2D barcoded Matrix tube containing 10ug of transfection-ready, dried plasmid DNA (reconstitute with 100 ul of water).

- Reconstitution Method:
1. Centrifuge at 5,000xg for 5min.
 2. Carefully open the tube and add 100ul of sterile water to dissolve the DNA.
 3. Close the tube and incubate for 10 minutes at room temperature.
 4. Briefly vortex the tube and then do a quick spin (less than 5000xg) to concentrate the liquid at the bottom.
 5. Store the suspended plasmid at -20°C. The DNA is stable for at least one year from date of shipping when stored at -20°C.

Note: Plasmids are not sterile. For experiments where strict sterility is required, filtration with 0.22um filter is required.

RefSeq: [NM_199259.4](#)

RefSeq Size: 2711 bp

RefSeq ORF: 1602 bp

Locus ID: 7179

UniProt ID: [P56180](#)

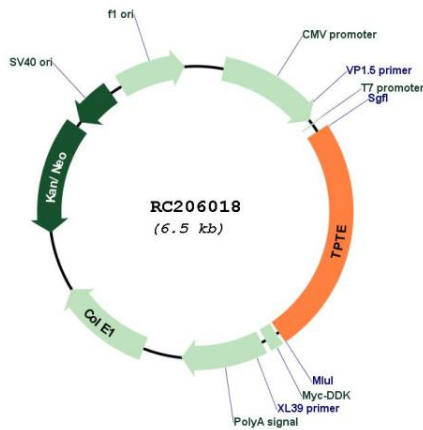
Cytogenetics: 21p11.2

Protein Families: Druggable Genome, Transmembrane

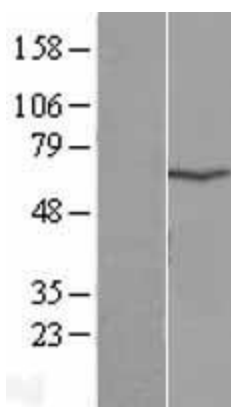
MW: 62.4 kDa

Gene Summary: This gene encodes a PTEN-related tyrosine phosphatase which may play a role in the signal transduction pathways of the endocrine or spermatogenic function of the testis. Alternative splicing results in multiple transcript variants. [provided by RefSeq, Mar 2014]

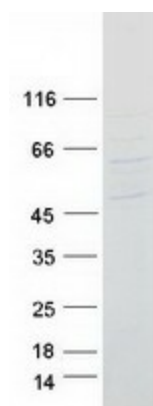
Product images:



Circular map for RC206018



Western blot validation of overexpression lysate (Cat# [LY404597]) using anti-DDK antibody (Cat# [TA50011-100]). Left: Cell lysates from untransfected HEK293T cells; Right: Cell lysates from HEK293T cells transfected with RC206018 using transfection reagent MegaTran 2.0 (Cat# [TT210002]).



Coomassie blue staining of purified TPTE protein (Cat# [TP306018]). The protein was produced from HEK293T cells transfected with TPTE cDNA clone (Cat# RC206018) using MegaTran 2.0 (Cat# [TT210002]).