

Product datasheet for **RC206014**

MTMR9 (NM_015458) Human Tagged ORF Clone

Product data:

Product Type:	Expression Plasmids
Product Name:	MTMR9 (NM_015458) Human Tagged ORF Clone
Tag:	Myc-DDK
Symbol:	MTMR9
Synonyms:	C8orf9; LIP-STYX; MTMR8
Vector:	pCMV6-Entry (PS100001)
E. coli Selection:	Kanamycin (25 ug/mL)
Cell Selection:	Neomycin



[View online »](#)

ORF Nucleotide
Sequence:

>RC206014 ORF sequence
Red=Cloning site Blue=ORF Green=Tags(s)

TTTTGTAATACGACTCACTATAGGGCGGCCGGAATTCGTCGACTGGATCCGGTACCGAGGAGATCTGCC
GCCGCGATCGCC

ATGGAGTTTTCGGAGCTGATTAAGACCCCGCGGTGGACAATGTGGTGTGCACCGCCTTCTACCCGG
CTGTGAGGGCACCTGTGCCTGACGGGCCACCACTTGATCCTGTCTCCCGGCAGGACAATACGGAGGA
GCTGTGGCTCCTCCATTCAAACATCGACGCCATCGACAAGCGATTTGTAGGATCACTGGGTACCATCATC
ATAAAATGTAAAGATTTTCGAATTATTCAGTTGGATATTCCTGGAATGGAGGAATGCTTGAATATAGCCA
GTTCCATTGAGGCATTGTCTACTCTGGACTCCATCACTCTGATGTACCCTTTCTTTTACCCTCTATGTT
TGAAGTGATAGAAGATGGCTGGCATTCTTCTCCTGAGCAAGAATTTGAACTCTATTCTTCAGCTACC
AGTGAATGGAGGTAAGCTATGTCAATAAGGAATTTGCTGTCTGCCCTTACCACCAATTGTCACAG
TGCCCAAATCCATCGATGATGAAGCTCTCGGAAGGTAGCTACATTTGACATGGAGGGCGCTTCCCAGT
ACTAAGCTATTACCACAAAAAAATGGGATGGTAATTATGCGAAGTGGTCAGCCACTCACTGGTACAAC
GGGAGGAGGTGCAAGGAGGACGAGAAGCTGATAAATGCTACCCTCAGGGCTGAAAAGCGTGGCTACATCA
TTGACACCCGATCCCTGAACGTGGCTCAGCAAAGTACAGCCAAAGGAGGTGGCTTTGAACAAGAAGCTCA
TTATCCTCAGTGGAGGCGAATTCATAAGTCCATTGAGAGGTATCACATTCTCAGGAGAGCTTAATCAAA
CTTGTGGAAGCTTGAATGACCAAACACATAACATGGACCGATGGCTCAGTAAATGGAGGCCTCTAACT
GGCTGACTCACATCAAAGAGATTCTGACAACTGCCTGCCTAGCGGCTCAGTGCATCGACAGGGAAGGAGC
ATCAATATTGATTCACGGAACAGAAGGAAGTATCCACACTCCAGGTGACCTCCTTGGCCAGATCATC
TTAGAGCCAAGAAGCAGGACCATTCTGGTGGTGGTGGTGGTGGTGGTGGTGGTGGTGGTGGTGGTGGT
ACCCATTCCAGCAGCGCTGTGCACAGTCAGCCTACTGTAACACCAAGCAGAAGTGGGAGGCTCCTGTATT
TCTTCTCTTCTGGACTGCGTGTGGCAGATCCTTCGTCAGTTCCCTGTTCTTTTGGATTTAATGAGAAT
TTCTCATCATGCTCTTTGAGCATGCTTATGCCTCACAGTTTGGAACTTTCTGGCAACAAATGAAAGTG
AAAGATGTAAGTTGAAGTACAGCAGAAGACGATGCTTTGTGGTCTGGGTTAATCAGCCAGTGAAGT
GAGTAAATTCACCAATCCCCTCTTTGAAGCCAACAACCTTGTCATCTGGCCTTCAGTTGCTCCGAGAGT
CTTCCACTGTGGGAAGGTATTTCTACGTTGGAATAGATCCTCTAAGTATTTGGATGAAGCATATGAAG
AAATGGTTAACATCATTGAATATAATAAAGAATTACAAGCAAAGTCAATATCCTTCGAAGGCAGTTGGC
AGAAGTGGAAACAGAGGACGGGATGCAGGAGAGTCCC

ACGCGTACGCGGCCGCTCGAGCAGAACTCATCTCAGAAGAGGATCTGGCAGCAAATGATATCCTGGATT
ACAAGGATGACGACGATAAGGTTTAA

Protein Sequence:

>RC206014 protein sequence
Red=Cloning site Green=Tags(s)

MEFAELIKTPRVDNVVLRHPFYPAVEGLTCLTGHHLILSSRDNTEELWLLHSNIDAIDKRFVGLGTII
IKCKDFRIIQLDIPGMEELNIASSIEALSTLDSITLMYPPFYRPMFEVIEDGWHFSLPEQEFELYSSAT
SEWRLSYVNKEFAVCPSPYPIVTPKSIDDEALRKVATFRHGGRFPVLSYHKKNGMVMIRSGQPLTGTN
GRRCKEDEKLINATLRAGKRGYIIDTRSLNVAQQTRAKGGFEQEAHYPQWRRIHKSIERYHILQESLIK
LVEACNDQTHNMDRWLSKLEASNWLTHIKEILTTACLAQQIDREGASILIHGTEGTDSTLQVTSIAQII
LEPRSRTIRGFELIEREWLQAGHPFQQRCAQSAYCNTKQKWEAPVLLFLDCVWQILRQFPCSFENEN
FLIMLFEHAYASQFGTFLGNNESEKCLKLQKQKMSLWSWVNQPSLSKFTNPLFEANLVIWPSVAPQS
LPLWEGIFLRWNRSSKYLDEAYEEMVNIIEYNKELQAKVNILRRQLAELETEDGMQESP

TRTRPLEQKLISEEDLAANDILDYKDDDDKV

Chromatograms:

https://cdn.origene.com/chromatograms/mk6073_f10.zip

Restriction Sites:

Sgfl-Mlul

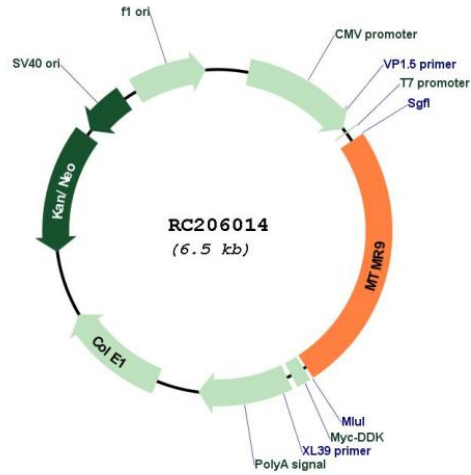
Cloning Scheme:

Cloning sites used for ORF Shuttling:



* The last codon before the Stop codon of the ORF

Plasmid Map:

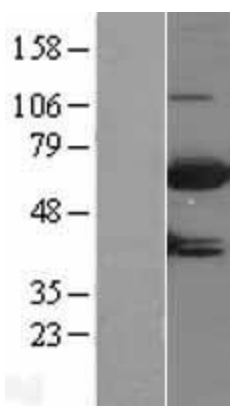


ACCN:

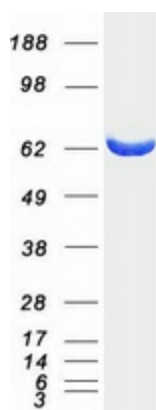
NM_015458

ORF Size:	1647 bp
OTI Disclaimer:	The molecular sequence of this clone aligns with the gene accession number as a point of reference only. However, individual transcript sequences of the same gene can differ through naturally occurring variations (e.g. polymorphisms), each with its own valid existence. This clone is substantially in agreement with the reference, but a complete review of all prevailing variants is recommended prior to use. More info
OTI Annotation:	This clone was engineered to express the complete ORF with an expression tag. Expression varies depending on the nature of the gene.
RefSeq:	NM_015458.4
RefSeq Size:	7421 bp
RefSeq ORF:	1650 bp
Locus ID:	66036
UniProt ID:	Q96QG7
Protein Families:	Druggable Genome, Phosphatase
MW:	63.5 kDa
Gene Summary:	This gene encodes a myotubularin-related protein that is atypical to most other members of the myotubularin-related protein family because it has no dual-specificity phosphatase domain. The encoded protein contains a double-helical motif similar to the SET interaction domain, which is thought to have a role in the control of cell proliferation. In mouse, a protein similar to the encoded protein binds with MTMR7, and together they dephosphorylate phosphatidylinositol 3-phosphate and inositol 1,3-bisphosphate. [provided by RefSeq, Jul 2008]

Product images:



Western blot validation of overexpression lysate (Cat# [LY402438]) using anti-DDK antibody (Cat# [TA50011-100]). Left: Cell lysates from untransfected HEK293T cells; Right: Cell lysates from HEK293T cells transfected with RC206014 using transfection reagent MegaTran 2.0 (Cat# [TT210002]).



Coomassie blue staining of purified MTMR9 protein (Cat# [TP306014]). The protein was produced from HEK293T cells transfected with MTMR9 cDNA clone (Cat# RC206014) using MegaTran 2.0 (Cat# [TT210002]).