

## Product datasheet for RC206012

### GPR105 (P2RY14) (NM\_014879) Human Tagged ORF Clone

#### Product data:

Product Type:	Expression Plasmids
Product Name:	GPR105 (P2RY14) (NM_014879) Human Tagged ORF Clone
Tag:	Myc-DDK
Symbol:	GPR105
Synonyms:	BPR105; GPR105; P2Y14
Mammalian Cell Selection:	Neomycin
Vector:	pCMV6-Entry (PS100001)
E. coli Selection:	Kanamycin (25 ug/mL)
ORF Nucleotide Sequence:	>RC206012 ORF sequence Red=Cloning site Blue=ORF Green=Tags(s)

TTTTGTAATACGACTCACTATAGGGCGGCCGGAATTCGTCGACTGGATCCGGTACCGAGGAGATCTGCC  
GCC**CGATCGCC**

ATGATCAATTC AACCTCCACACAGCCTCCAGATGAATCCTGCTCTCAGAACCTCCTGATCACTCAGCAGATC  
TCATTCCTGTGCTGTACTGTATGGTCTTCATTGCAGGAATCCTACTCAATGGAGTGTGAGGATGGATATT  
CTTTTACGTGCCAGCTCTGAGAGTTTCATCATCTATCTCAAGAACATTGTTATTGCTGACTTTGTGATG  
AGCCTGACTTTTCCTTTCAAGATCCTTGGTGACTCAGGCCTTGGTCCCTGGCAGTGAACGTGTTTGTGT  
GCAGGGTCTCTGCCGTGCTCTTCTACGTCAACATGTACGTGAGCATTGTGTTCTTTGGGCTCATCAGCTT  
TGACAGATATTATAAAATGTAAAGCCTCTTTGGACTTCTTTCATCCAGTCAAGTACAGTACAGCAAACTT  
CTGTCAAGTATAGTATGGATGCTCATGCTCCTCCTTGCTGTTCCAAATATTATTCTACCAACCAGAGTG  
TTAGGGAGGTTACACAAATAAAATGTATAGAACTGAAAAGTGAAGTGGGACGGAAGTGGCACAAAGCATC  
AAACTACATCTTCGTGGCCATCTTCTGGATTGTGTTTCTTTTGTAAATCGTTTTCTATACTGCTATCACA  
AAGAAAATCTTTAAGTCCCACCTTAAGTCAAGTCGGAATCCACTTCGGTCAAAAAGAAATCTAGCCGCA  
ACATATTCAGCATCGTGTGTTTGTGTTTTTGTCTGTTTTGTACCTTACCATTGCCAGAATCCCCTACAC  
AAAGAGTCAGACCGAAGCTCATTACAGTCGCCAGTCAAAAAGAAATCTTGGGTATATGAAAGAATCACT  
CTGCTACTATCTGCTGCAATGTATGCTTGGACCCTATTATTTATTTCTTCTATGCCAGCCGTTTAGGG  
AAATCTTATGTAAGAAATTCACATTCCATTAAGCTCAGAAATGACCTAGACATTTCCAGAATCAAAAG  
AGGAAATACAACACTTGAAAGCACAGATACTTTG

**ACGCGT**ACGCGGCCGCTCGAGCAGAACTCATCTCAGAAGAGGATCTGGCAGCAAATGATATCCTGGATT  
ACAAGGATGACGACGATAAGGTTTAA

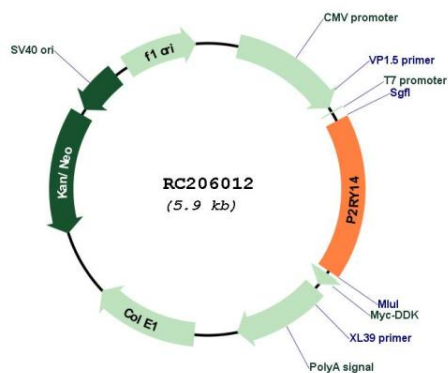


[View online »](#)

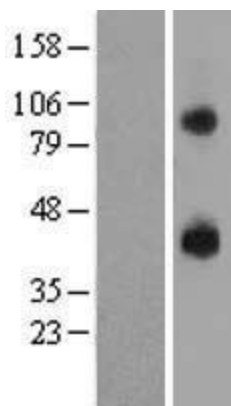


<b>Reconstitution Method:</b>	<ol style="list-style-type: none"><li>1. Centrifuge at 5,000xg for 5min.</li><li>2. Carefully open the tube and add 100ul of sterile water to dissolve the DNA.</li><li>3. Close the tube and incubate for 10 minutes at room temperature.</li><li>4. Briefly vortex the tube and then do a quick spin (less than 5000xg) to concentrate the liquid at the bottom.</li><li>5. Store the suspended plasmid at -20°C. The DNA is stable for at least one year from date of shipping when stored at -20°C.</li></ol>
<b>RefSeq:</b>	<a href="#">NM_014879.2</a> , <a href="#">NP_055694.2</a>
<b>RefSeq Size:</b>	2504 bp
<b>RefSeq ORF:</b>	1017 bp
<b>Locus ID:</b>	9934
<b>UniProt ID:</b>	<a href="#">Q15391</a>
<b>Cytogenetics:</b>	3q25.1
<b>Domains:</b>	7tm_1
<b>Protein Families:</b>	Druggable Genome, GPCR, Transmembrane
<b>Protein Pathways:</b>	Neuroactive ligand-receptor interaction
<b>MW:</b>	39 kDa
<b>Gene Summary:</b>	The product of this gene belongs to the family of G-protein coupled receptors, which contains several receptor subtypes with different pharmacological selectivity for various adenosine and uridine nucleotides. This receptor is a P2Y purinergic receptor for UDP-glucose and other UDP-sugars coupled to G-proteins. It has been implicated in extending the known immune system functions of P2Y receptors by participating in the regulation of the stem cell compartment, and it may also play a role in neuroimmune function. Two transcript variants encoding the same protein have been identified for this gene. [provided by RefSeq, Jul 2008]

Product images:



Circular map for RC206012



Western blot validation of overexpression lysate (Cat# [LY414966]) using anti-DDK antibody (Cat# [TA50011-100]). Left: Cell lysates from untransfected HEK293T cells; Right: Cell lysates from HEK293T cells transfected with RC206012 using transfection reagent MegaTran 2.0 (Cat# [TT210002]).