

Product datasheet for RC206006

VPS36 (NM_016075) Human Tagged ORF Clone

Product data:

Product Type:	Expression Plasmids
Product Name:	VPS36 (NM_016075) Human Tagged ORF Clone
Tag:	Myc-DDK
Symbol:	VPS36
Synonyms:	C13orf9; CGI-145; EAP45
Vector:	pCMV6-Entry (PS100001)
E. coli Selection:	Kanamycin (25 ug/mL)
Cell Selection:	Neomycin
ORF Nucleotide Sequence:	>RC206006 ORF sequence Red=Cloning site Blue=ORF Green=Tags(s)

TTTTGTAATACGACTCACTATAGGGCGGCCGGAATTCGTCGACTGGATCCGGTACCGAGGAGATCTGCC
GCCGCGATCGCC

ATGGACCGCTTCGTTTGGACCAGCGCCTCCTGGAGATCAACGAGACCCTGGTATCCAGCAGCGCGGGG
TGCGAATCTACGATGGCGAGGAGAAGATAAAATTTGATGCTGGGACTCTCCTTCTTAGTACACCCGACT
GATTTGGAGAGATCAGAAAAATCATGAGTGTTCATGGCCATTCTCCTTTCCCAAATTGTGTTTCATTGAA
GAACAGGCGGCTGGAATTGGGAAGAGTGCCAAAAATAGTGGTTCATCTTACCCAGCTCCTCTAACAAAG
AACCTGGCCCATTCAGAGTAGTAAGAACTCTACATCAAACCTCTCCTTCAAAGAACATGGCCAGATTGA
GTTTTACAGGCGTTTATCAGAGGAAATGACACAAAGAAGATGGGAGAATATGCCAGTTTCCAGTCATTA
CAAACAAATAGAGGACCCAGCCAGGAAGAATAAGGGCTGTAGGAATTGTAGGTATTGAAAGGAACTGG
AAGAAAAAGAAAAGAACTGACAAAAACATTTCTGAGGCCTTTGAGACCTCAGCAAACATGATCAA
GGCTAAGGAAATGGTGAATTATCAAAATCAATTGCTAATAAAATTAAGACAAACAAGGTGACATCACA
GAAGATGAGACCATCAGGTTTAAATCCTACTTGCTGAGCATGGGAATAGCTAACCAGTTACCAGAGAAA
CCTACGGCTCAGGCACACAGTACCACATGCAGCTGGCCAAACAACCTGGCTGGAATATTGCAGGTGCCTTT
AGAGGAACGAGGGGAATAATGTCACTCACGGAGGTGTACTGCTTAGTAAACCGAGCTCGAGGAATGGAA
TTGCTCTCACCAGAAGATTTAGTGAATGCGTGCAAGATGCTGGAAGCACTGAAATACCTCTCAGGCTCC
GTGTGTTTGACAGTGGCGTCATGGTAATTGAGCTTCAGTCTCACAAGGAAGAGGAAATGGTGGCCTCGGC
CCTGGAGACAGTTTCAGAAAAGGATCCCTAACATCAGAAGAGTTTGCTAAGCTTGTGGGAATGTCTGTC
CTCCTAGCCAAAGAAAGTTGCTGCTTGCAGAGAAGATGGCCATCTTGGCGTGATGACTCAGTGGAAAG
GCCTGCGTTTTTACCAAATTTATTTATGACACAGAGC

ACGCGTACGCGGCCGCTCGAGCAGAAACTCATCTCAGAAGAGGATCTGGCAGCAAATGATATCCTGGATT
ACAAGGATGACGACGATAAGGTTTAA



[View online »](#)

Protein Sequence: >RC206006 protein sequence
 Red=Cloning site Green=Tags(s)

MDRFVWTSGLLEINETLVIQQRGVRIYDGEEKIKFDAGTLLLSTHRLIWRDQKNHECCMAILLSQIVFIE
 EQAAGIGKSAKIVVHLHPAPPNKEPQPFQSSKNSYIKLSFKEHGQIEFYRRLSEEMTQRRWENMPVSQSL
 QTNRGPQPGRIRAVGIVGIERKLEEKRKETDKNI SEAFEDLSKLMIKAKEMVELSKSIANKIKDKQGDIT
 EDETIRFKSYLLSMGIANPVTRRETYGSGTQYHMLAKQLAGILQVPLEERGGIMSLTEVYCLVNRARGME
 LLSPEDLVNACKMLEALKLPLRLRVFDSGVMVIELQSHKKEEMVASALETVSEKGLTSEEFAKLVGMSV
 LLAKERLLLAEKMGHLCRDSDVEGLRFYPNLFMTQS

TRTRPLEQKLISEEDLAANDILDYKDDDDKV

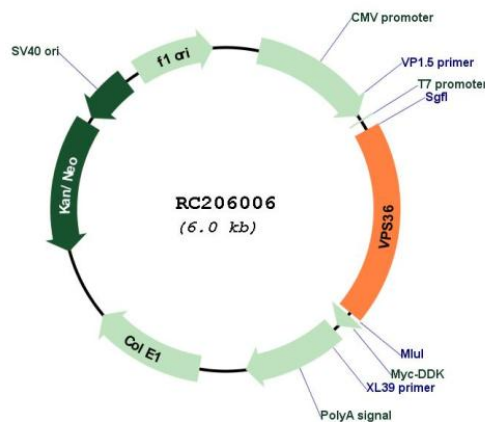
Chromatograms: https://cdn.origene.com/chromatograms/mk6368_c03.zip

Restriction Sites: SgfI-MluI

Cloning Scheme:

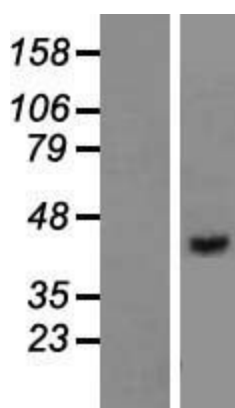


Plasmid Map:

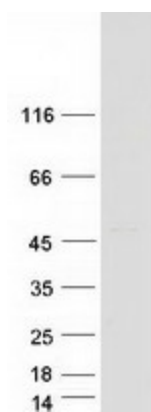


ACCN:	NM_016075
ORF Size:	1158 bp
OTI Disclaimer:	The molecular sequence of this clone aligns with the gene accession number as a point of reference only. However, individual transcript sequences of the same gene can differ through naturally occurring variations (e.g. polymorphisms), each with its own valid existence. This clone is substantially in agreement with the reference, but a complete review of all prevailing variants is recommended prior to use. More info
OTI Annotation:	This clone was engineered to express the complete ORF with an expression tag. Expression varies depending on the nature of the gene.
RefSeq:	NM_016075.1 , NM_016075.2 , NM_016075.3 , NM_016075.4 , NP_057159.2
RefSeq Size:	4473 bp
RefSeq ORF:	1161 bp
Locus ID:	51028
Domains:	Vps36
Protein Families:	Transcription Factors
Protein Pathways:	Endocytosis
MW:	43.8 kDa
Gene Summary:	This gene encodes a protein that is a subunit of the endosomal sorting complex required for transport II (ESCRT-II). This protein complex functions in sorting of ubiquitinated membrane proteins during endocytosis. A similar protein complex in rat is associated with RNA polymerase elongation factor II. [provided by RefSeq, Aug 2013]

Product images:



Western blot validation of overexpression lysate (Cat# [LY414200]) using anti-DDK antibody (Cat# [TA50011-100]). Left: Cell lysates from untransfected HEK293T cells; Right: Cell lysates from HEK293T cells transfected with RC206006 using transfection reagent MegaTran 2.0 (Cat# [TT210002]).



Coomassie blue staining of purified VPS36 protein (Cat# [TP306006]). The protein was produced from HEK293T cells transfected with VPS36 cDNA clone (Cat# RC206006) using MegaTran 2.0 (Cat# [TT210002]).