

Product datasheet for **RC206001**

SERINC1 (NM_020755) Human Tagged ORF Clone

Product data:

Product Type:	Expression Plasmids
Product Name:	SERINC1 (NM_020755) Human Tagged ORF Clone
Tag:	Myc-DDK
Symbol:	SERINC1
Synonyms:	TDE1L; TDE2; TMS-2; TMS2
Mammalian Cell Selection:	Neomycin
Vector:	pCMV6-Entry (PS100001)
E. coli Selection:	Kanamycin (25 ug/mL)



[View online »](#)

ORF Nucleotide Sequence:

>RC206001 ORF sequence
 Red=Cloning site Blue=ORF Green=Tags(s)

TTTTGTAATACGACTCACTATAGGGCGGCCGGAATTCGTCGACTGGATCCGGTACCGAGGAGATCTGCC
 GCCGCGATCGCC

ATGGGGAGCGTCTCTGGGCTGTGCTCCATGGCGAGCTGGATACCATGTTTGTGTGGAAGTCCCCCGTGT
 TGCATGCGGATGCTGTCTAGTGGAAACAACCTCACTGTAAGTATGATCTATGCACCTTTCTTGCT
 TGTGGAGTATGTAGCTTGTGAATGTTGATACCAGGAATGGAAGAACAACCTGAATAAGATTCCTGGA
 TTTTGTGAGAATGAGAAAGGTGTGTCCCTTGTAACTTTTGGTTGGCTATAAAGCTGTATATCGTTTGT
 GCTTTGGTTTGGCTATGTTCTATCTTCTCTCTTTACTAATGATCAAAGTGAAGAGTAGCAGTGATCC
 TAGAGCTGCAGTGACAATGGATTTTGGTTCTTTAAATTTGCTGCAGCAATTGCAATTATTATGGGGCA
 TTCTTCATTCCAGAAGGAACTTTACAACCTGTGTGTTTTATGTAGGCATGCCAGGTGCCTTTTGTTC
 TCCTCATACAACCTAGTCTTACTTATTGATTTTGCACATTCATGGAATGAATCGTGGGTTGAAAAATGGA
 AGAAGGGAACCTCGAGATGTTGGTATGCAGCCTTGTATCAGCTACAGCTCTGAATTATCTGCTGTCTTTA
 GTTGCTATCGTCCTGTTCTTTGTCTACTACACTCATCCAGCCAGTTGTTTCAGAAAACAAGGCGTTATCA
 GTGTCAACATGCTCCTCTGCGTTGGTGCTTCTGTAATGTCTATACTGCCAAAAATCCAAGAATCACAAAC
 AAGATCTGGTTTGTACAGTCTTACAGTAATTACAGTCTACACAATGATTTGACATGGTCAGCTATGACC
 AATGAACCAGAAACAATGCAACCCAAGTCTACTAAGCATAATTGGCTACAATACAACAAGCACTGTCC
 CAAAGGAAGGGCAGTCAGTCCAGTGGTGGCATGCTCAAGGAATTATAGGACTAATCTCTTTTGTGTG
 TGTATTTTATCCAGCATCCGTAATCAAACAATAGTCAAGTTAATAAAGTACTTAACAAGTATGAA
 TCTACATTAATAGAAGATGGTGGAGCTAGAAGTATGATGATCACTGGAGGATGGGGACGATGTTACCCGAG
 CTGTAGATAATGAAAGGGATGGTGTCACTTACAGTTATTCCTTCTTCACTTCATGCTTTTCTGCTTC
 ACTTTATATCATGATGACCCCTTACCAACTGGTACAGGTATGAACCTCTCGTGAGATGAAAAGTCAAGTGG
 ACAGCTGTCTGGGTGAAAATCTCTTCCAGTTGGATTGGCATCGTCTGTATGTTGGACACTCGTGGCAC
 CACTTGTCTTACAAATCGTGATTTTGAC

ACGCGTACGCGGCCGCTCGAGCAGAACTCATCTCAGAAGAGGATCTGGCAGCAAATGATATCCTGGATT
 ACAAGGATGACGACGATAAGGTTTAA

Protein Sequence:

>RC206001 protein sequence
 Red=Cloning site Green=Tags(s)

MGSVLGLCSMASWIPCLCGSAPCLLCRCCPSGNNSTVTRLIYALFLLVGVCVACVMLIPGMEEQLNKIPG
 FCENEKGVVPCNILVGYKAVYRLCFGLAMFYLLSLLMIKVKSSSDPRAAVHNGFWFFKFAAAIAIIGA
 FFIPGTFFTTVWFYVGMAGAFCFILIQVLVLLIDFAHSWNE SWVEKMEEGNSRCWYAALLSATALNYLLSL
 VAIVLFFVYYTHPASCSENKAFISVNMLLCV GASVMSILPKIQESQPRSGLLQSSVITVYTMYL TWSAMT
 NEPETNCNPSLLSIIGYNTTSTVPKEGQSVQWWHAQGIIGLILFLLCVFYSSIRTSNNSQV NKLTLTSD
 STLIEDGGARSDGLEDGDDVHRAVDNERDGV TYSYSFFHFMLFLASLYIMM TLTNWRYEPSREMKSQW
 TAVVWKISSWIGIVLYVWTLVAPLVLTNRDFD

TRTRPLEQKLI SEEDLAANDILDYKDDDDKV

Chromatograms:

https://cdn.origene.com/chromatograms/mk6073_b02.zip

Restriction Sites:

Sgfl-MluI

Cloning Scheme:


ACCN: NM_020755

ORF Size: 1359 bp

OTI Disclaimer: The molecular sequence of this clone aligns with the gene accession number as a point of reference only. However, individual transcript sequences of the same gene can differ through naturally occurring variations (e.g. polymorphisms), each with its own valid existence. This clone is substantially in agreement with the reference, but a complete review of all prevailing variants is recommended prior to use. [More info](#)

OTI Annotation: This clone was engineered to express the complete ORF with an expression tag. Expression varies depending on the nature of the gene.

Components: The ORF clone is ion-exchange column purified and shipped in a 2D barcoded Matrix tube containing 10ug of transfection-ready, dried plasmid DNA (reconstitute with 100 ul of water).

- Reconstitution Method:**
1. Centrifuge at 5,000xg for 5min.
 2. Carefully open the tube and add 100ul of sterile water to dissolve the DNA.
 3. Close the tube and incubate for 10 minutes at room temperature.
 4. Briefly vortex the tube and then do a quick spin (less than 5000xg) to concentrate the liquid at the bottom.
 5. Store the suspended plasmid at -20°C. The DNA is stable for at least one year from date of shipping when stored at -20°C.

RefSeq: [NM_020755.4](#)

RefSeq Size: 3144 bp

RefSeq ORF: 1362 bp

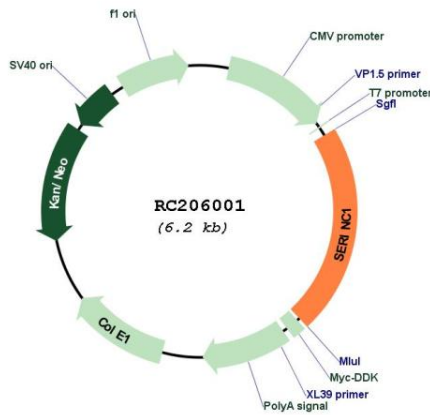
Locus ID: 57515

UniProt ID: [Q9NRX5](#)

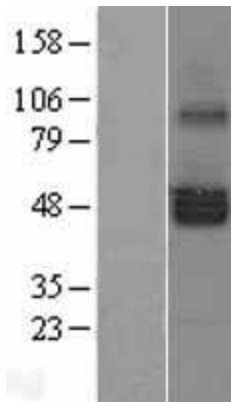
Cytogenetics: 6q22.31

Domains: TMS_TDE
Protein Families: Transmembrane
MW: 50.5 kDa
Gene Summary: Enhances the incorporation of serine into phosphatidylserine and sphingolipids. [UniProtKB/Swiss-Prot Function]

Product images:



Circular map for RC206001



Western blot validation of overexpression lysate (Cat# [LY402801]) using anti-DDK antibody (Cat# [TA50011-100]). Left: Cell lysates from untransfected HEK293T cells; Right: Cell lysates from HEK293T cells transfected with RC206001 using transfection reagent MegaTran 2.0 (Cat# [TT210002]).