

## Product datasheet for **RC206000**

### THAP1 (NM\_018105) Human Tagged ORF Clone

#### Product data:

**Product Type:** Expression Plasmids  
**Product Name:** THAP1 (NM\_018105) Human Tagged ORF Clone  
**Tag:** Myc-DDK  
**Symbol:** THAP1  
**Synonyms:** DYT6  
**Mammalian Cell Selection:** Neomycin  
**Vector:** pCMV6-Entry (PS100001)  
**E. coli Selection:** Kanamycin (25 ug/mL)  
**ORF Nucleotide Sequence:** >RC206000 ORF sequence  
**Red=Cloning site Blue=ORF Green=Tags(s)**

TTTTGTAATACGACTCACTATAGGGCGCCGGGAATTCGTCGACTGGATCCGGTACCGAGGAGATCTGCC  
GCC**CGATCGCC**

ATGGTGCACTCTGCTCCGCCTACGGCTGCAAGAACCGCTACGACAAGGACAAGCCGTTTCTTTCCACA  
AGTTTCTCTTACTCGACCCAGTCTTTGTAAGAATGGGAGGCAGCTGTCAGAAGAAAACTTTAAACC  
CACCAAGTATAGCAGTATTTGTTTCAGAGCACTTACTCCAGACTGCTTTAAGAGAGAGTGCAACAACAAG  
TTACTGAAAGAGAATGCTGTGCCACAATATTTCTTTGTACTGAGCCACATGACAAGAAAGAAGATCTTC  
TGGAGCCACAGGAACAGCTTCCCCACCTCTTACCCTCCTGTTTCCAGGTTGATGCTGCTATTGG  
ATTACTAATGCCGCTCTTCAGACCCCTGTTAATCTCTCAGTTTTCTGTGACCACAATACTGTGGAG  
GATAAATGCACCAGCGGAAAAGGATTCATCAGCTAGAACAGCAAGTTGAAAACTCAGAAAGAAGCTCA  
AGACCGCACAGCAGCGATGCAGAAGGCAAGAACGGCAGCTTAAAAATTAAGGAGGTTGTTCACTTCCA  
GAAAGAGAAAGACGACGTATCAGAAAGAGGTTATGTGATTCTACCAATGACTACTTTGAAATAGTTGAA  
GTACCAGCA

**ACGCGT**ACGCGGCGCTCGAGCAGAACTCATCTCAGAAGAGGATCTGGCAGCAATGATATCTGGATT  
ACAAGGATGACGACGATAAGGTTTAA



[View online »](#)



**Reconstitution Method:**

1. Centrifuge at 5,000xg for 5min.
2. Carefully open the tube and add 100ul of sterile water to dissolve the DNA.
3. Close the tube and incubate for 10 minutes at room temperature.
4. Briefly vortex the tube and then do a quick spin (less than 5000xg) to concentrate the liquid at the bottom.
5. Store the suspended plasmid at -20°C. The DNA is stable for at least one year from date of shipping when stored at -20°C.

**Note:** Plasmids are not sterile. For experiments where strict sterility is required, filtration with 0.22um filter is required.

**RefSeq:** [NM\\_018105.3](#)

**RefSeq Size:** 2189 bp

**RefSeq ORF:** 642 bp

**Locus ID:** 55145

**UniProt ID:** [Q9NVV9](#)

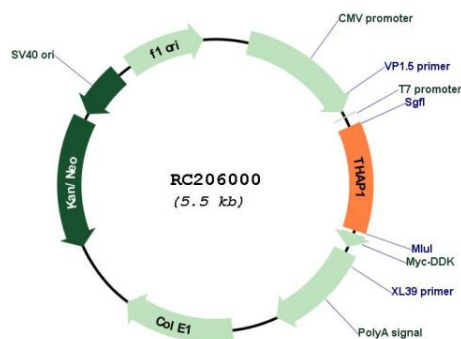
**Cytogenetics:** 8p11.21

**Domains:** DM3

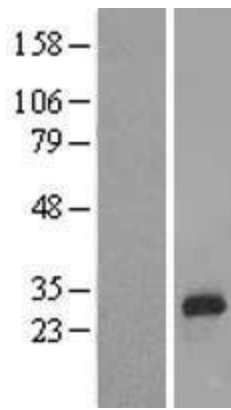
**MW:** 24.9 kDa

**Gene Summary:** The protein encoded by this gene contains a THAP domain, a conserved DNA-binding domain. This protein colocalizes with the apoptosis response protein PAWR/PAR-4 in promyelocytic leukemia (PML) nuclear bodies, and functions as a proapoptotic factor that links PAWR to PML nuclear bodies. Alternatively spliced transcript variants encoding distinct isoforms have been observed. [provided by RefSeq, Jul 2008]

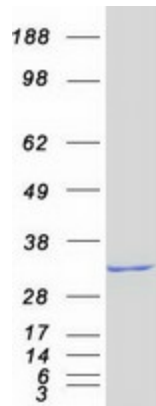
### Product images:



Circular map for RC206000



Western blot validation of overexpression lysate (Cat# [LY413231]) using anti-DDK antibody (Cat# [TA50011-100]). Left: Cell lysates from untransfected HEK293T cells; Right: Cell lysates from HEK293T cells transfected with RC206000 using transfection reagent MegaTran 2.0 (Cat# [TT210002]).



Coomassie blue staining of purified THAP1 protein (Cat# [TP306000]). The protein was produced from HEK293T cells transfected with THAP1 cDNA clone (Cat# RC206000) using MegaTran 2.0 (Cat# [TT210002]).