

Product datasheet for **RC205998**

TMEM104 (NM_017728) Human Tagged ORF Clone

Product data:

Product Type:	Expression Plasmids
Product Name:	TMEM104 (NM_017728) Human Tagged ORF Clone
Tag:	Myc-DDK
Symbol:	TMEM104
Mammalian Cell Selection:	Neomycin
Vector:	pCMV6-Entry (PS100001)
E. coli Selection:	Kanamycin (25 ug/mL)



[View online »](#)

ORF Nucleotide Sequence:

>RC205998 ORF sequence
 Red=Cloning site Blue=ORF Green=Tags(s)

TTTTGTAATACGACTCACTATAGGGCGGCCGGAATTCGTCGACTGGATCCGGTACCGAGGAGATCTGCC
 GCC**CGCATCGCC**

ATGGCGGGTAAATTACAGAGACCGGGAACTCTACTCTTCTACGTTGGGCTGGTGTACATGTTTAAAC
 TCATCGTGGGCACGGGCGCACTACCATGCCCAAGGCATTTCGCCACTGCCGGGTGGCTTGTGACGCTCGT
 CCTGCTGGTGTCTCTGGGCTTCATGAGCTTCATGACCACCACTTTGTGATAGAGCCATGGCTGCAGCC
 AACCGCGAGCTCCACTGGAAGAGGATGGAGAACCTCAAGGAGGAGGAAGATGACGACTCCTCCACAGCCT
 CAGACAGCGATGTTCTCATCCGGGACAACACGAGCGGGCAGAGAAGCGGCCATCCTGTCTGTGCAGAG
 ACGTGGATCTCCAACCCGTTTAAATCACAGACCGGGTGGAAATGGGACAAATGGCCTCCATGTTCTTC
 AATAAAGTGGGGTCAACTTGTCTATTTCTGCATCATCGTTTATCTGTATGGAGACCTCGCCATCTATG
 CTGCTGCCGTGCCCTTCCCTCATGCAGGTGACCTGCAGCGCCACTGGCAATGACTCCTGCGGTGTGGA
 AGCAGACACCAAATAACAATGACACTGACCGGTGTTGGGGCCCCGCGCCGAGTGGACGCCTACCGCATC
 TACTTGGCGATCTCACTCTCCTCCTCGGACCGTTACCTTCTTTGACGTCCAGAAGACCAAGTACCTGC
 AGATCCTGACCTCTGTATGAGATGGATCGCTTTCGCGCTCATGATTGTGCTGGCCCTGATCCGCATCGG
 GCACGGACAAGGGGAGGGGCACCCGCCCTGGCTGACTTCTCGGGGGTCCGGAACCTGTTGGGGTGTGC
 GTCTACTCCTTATGTGCCAGCACTCTCTGCCATCCCTCATTACCCCGTCTCCTCCAAGCGCCACCTCA
 CAAGGCTGGTGTCTCTGGACTACGTGCTGATCCTGGCCTTCTACGGCCTCCTCTCCTTACCAGCCATCTT
 CTGCTCCGCGGGCAGCCTCATGGACATGTACACCTCAACTTCGCGCGCTGTGACGTGTGGGCTG
 GCCGCTGTGCGCTTTTCTGGGCTCTTCCCGTCTTACCACATCAGACCAACTCCCCATCATTGCCG
 TGACCCTGCGCAACAACCTGGAAGACACTTCCACCGGAGGGCGGACGTACCCGTGGGTGGTGGACCG
 CGTCGTGTTTCCACCATCACCTGGTGCCGCTGTGCTGGTGGCCTTCTGCACCCACGACCTGGAGTCC
 CTGGTGGGCATCACAGGGCCTACGCGGCACCGCATCCAGTACGTATCCCCGCTTCTGTTGTACC
 ACTGCCGAGGGACACCCAGCTGGCCTTGGTGTGGGTGAGCAACAAGCACAGTCCCCTTCCGCCA
 CACCTTGGGTGGGCTTCGTGCTGCTCTGGGCTTCTCTGCTTATTTCGTACGGCCAATATCATC
 CTCAGCGAGACCAAGCTC

ACGCGTACGCGGCCGCTCGAGCAGAACTCATCTCAGAAGAGGATCTGGCAGCAAATGATATCCTGGATT
 ACAAGGATGACGACGATAAGGTTTAA

Protein Sequence:

>RC205998 protein sequence
 Red=Cloning site Green=Tags(s)

MAGEITETGELYSSYVGLVYMFNLIIVGTGALTMPKAFATAGWLVSLVLLVFLGFMSFMTTTFVIEAMAAA
 NAQLHWKRMENLKEEEDDSSTASDSVLIIRDNYERAERPIILSVQRRGSPNPFETDRVEMQMAMSMFF
 NKVGVNLFYFCIIVYLYGDLAIYAAVPPFLMQVTCSATGNDSCGVEADTKYNDTDRCWGLRRVDAYRI
 YLAIFLTLGGPFTFFDVQKTKYLQILTSLMRWIAFAVMIVLALIRIGHGQGEHPPLADFSGVRNLFVGC
 VYFMCQHSLPSLITPVSSKRHLTRLVFLDYVLIILAFYGLLSFTAIFCFRGLSLMDMYTLNFAACDVG
 AAVRFFLGLFPVFTISTNFPPIIAVTLRNNWKTLFHREGGTYPWVDRVVFPTITLVPPVLAFCVTHDLES
 LVGITGAYAGTGIQYVIPAFLVYHRRDQLAFGCGVSNKHRSPFRHTFWVGFVLLWAFSCFIFVTANII
 LSETKL

TRTRPLEQKLISEEDLAANDILDYKDDDDKV

Chromatograms:

https://cdn.origene.com/chromatograms/mk6029_f09.zip

Restriction Sites:

Sgfl-MluI

Cloning Scheme:


ACCN: NM_017728

ORF Size: 1488 bp

OTI Disclaimer: The molecular sequence of this clone aligns with the gene accession number as a point of reference only. However, individual transcript sequences of the same gene can differ through naturally occurring variations (e.g. polymorphisms), each with its own valid existence. This clone is substantially in agreement with the reference, but a complete review of all prevailing variants is recommended prior to use. [More info](#)

OTI Annotation: This clone was engineered to express the complete ORF with an expression tag. Expression varies depending on the nature of the gene.

Components: The ORF clone is ion-exchange column purified and shipped in a 2D barcoded Matrix tube containing 10ug of transfection-ready, dried plasmid DNA (reconstitute with 100 ul of water).

- Reconstitution Method:**
1. Centrifuge at 5,000xg for 5min.
 2. Carefully open the tube and add 100ul of sterile water to dissolve the DNA.
 3. Close the tube and incubate for 10 minutes at room temperature.
 4. Briefly vortex the tube and then do a quick spin (less than 5000xg) to concentrate the liquid at the bottom.
 5. Store the suspended plasmid at -20°C. The DNA is stable for at least one year from date of shipping when stored at -20°C.

Note: Plasmids are not sterile. For experiments where strict sterility is required, filtration with 0.22um filter is required.

RefSeq: [NM_017728.2](#), [NP_060198.2](#)

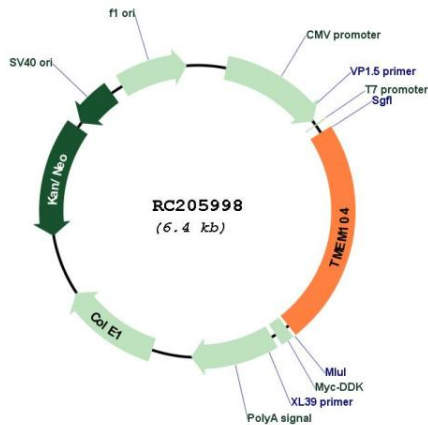
RefSeq Size: 4763 bp

RefSeq ORF: 1491 bp

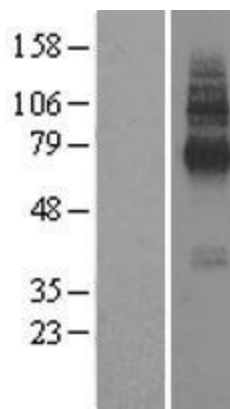
Locus ID: 54868

UniProt ID: Q8NE00
Cytogenetics: 17q25.1
Protein Families: Transmembrane
MW: 55.7 kDa

Product images:



Circular map for RC205998



Western blot validation of overexpression lysate (Cat# [LY402611]) using anti-DDK antibody (Cat# [TA50011-100]). Left: Cell lysates from untransfected HEK293T cells; Right: Cell lysates from HEK293T cells transfected with RC205998 using transfection reagent MegaTran 2.0 (Cat# [TT210002]).