

Product datasheet for **RC205997**

TEX10 (NM_017746) Human Tagged ORF Clone

Product data:

Product Type:	Expression Plasmids
Product Name:	TEX10 (NM_017746) Human Tagged ORF Clone
Tag:	Myc-DDK
Symbol:	TEX10
Synonyms:	bA208F1.2; Ipi1
Mammalian Cell Selection:	Neomycin
Vector:	pCMV6-Entry (PS100001)
E. coli Selection:	Kanamycin (25 ug/mL)



[View online »](#)

ORF Nucleotide Sequence:

>RC205997 ORF sequence
 Red=Cloning site Blue=ORF Green=Tags(s)

TTTTGTAATACGACTCACTATAGGGCGGCCGGGAATTCGTGACTGGATCCGGTACCGAGGAGATCTGCC
 GCC**GCGATCGCC**

ATGACTAAAAAAGAAAACGCCAACATGATTTTCAAAAAGTAAAATTGAAAGTTGGTAAAAAGAAGCCCA
 AGTTACAAAATGCTACTCTACAACTTTAAAACAAGACTATACATCTGCCTGAGCAACTCAAAGAGGA
 TGGAACTTCCAACAAACAATAGAAACTTAACATAAAGGATTTGCTGTACAGATGCATCACTACAAT
 GCTGGGGTTAAACAAAGTCTCTTCTGGACTTAAAGACCTTTTGTCTCAATACCCATTTATAATTGATG
 CACACCTTTCAAACATATTAAGTGAAGTACTGCTGTGTTTACAGATAAAGATGCTAATGTACGATTAGC
 AGCAGTTCAACTTCTCAATTCCTGGCCCCAAAATACGAGCTGAACAAATTTCTCCATTTTCTTTG
 GTAAGTGCCATCTCTAGTGCATGACTCACATTACTGAAGGAATTCAGGAGGACTCTTAAAAGTTT
 TGGACATCTGTGGAACAGTACCCAGCTCTAATTACTGGCCGTAGCAGCATATTGCTTAAAGATTTTGT
 AGAAGTTATTTCTCATCAGCAGCTGTCAAAGGACTGATAAATAGAGACAGATCCAGTCCCTGGACTT
 TCTGTAATCCTAATCGGAGACTCACTTCTCAGCAATGGAGGCTGAAAGTCTTAGTGAGACTCAGTAAAT
 TCCTTCAGGCCTTGGCAGATGGATCCAGTAGGTTGAGAGAAAGTGAAGGACTTCAGGAACAGAAAGAAA
 TCCCCATGCCACTAGCAACTCCATTTTATCAACTGGAAGGAACATGCCAACGACCAGCAACACATCCAG
 GTTTATGAAAAATGGGGTTTACAGCCAAATGTCAGTTCACAGTTCAGGCTACGGTATCTGGTTGGAGGAC
 TGAGTGGTGTGGATGAAGGCCTGTCATCTACTGAAAACCTGAAAGGATTTATTGAGATAAATTCATT
 GCTAATGAATGCTGGGTGAAGCTGTACCTCCACAACAGTACTCCTGTTGGGAATGGTATAGAACGA
 GAACCTTACAGGTTATGCAGCAAGTCTTAATATTATTTCCCTTCTGTGAAACTCTCTAAACAACAGG
 ATGAAACCCATAAATGGAGTCATGGCTTCGAAAGAACTACCTATTGATTTTAAACACCATTTTATGAG
 TCGTTTTCCATATGTCTTAAAAGAAATAACCAAGCACAAAGGAAAGAGCCAAATAAAAGCATCAAGCAT
 TGCACAGTTCTCTCCAATAACATAGATCATCTTACTGAATTTAACTGTCTGATATCATGGTCTCCC
 TGGCAAATGCGTCAACTTTCAGAAAGGATTGCAGTTGGATAGAAATGATAAGGAAATTTGTAAACAGAGAC
 CCTTGAAGATGGCTTAGGCTAAATAGTAAGCAACTGAACAGATTGCTGGGAGTATCCTGGAGGTTAATG
 CAAATACAGCCAAACAGAGAGGACAGAGACTCTTATTAAGGCAGTTTATACATTATATCAGCAGAGGG
 GCCTTATCCTCCAGTTCGGACTTTGTTATTGAAGCTTTTCAGTAAAATCTATCAGACAGAAGAAGTGA
 ATCTTGTAGATTCAGATATCGTAGTAAAGTGTATCCCGTTGGCTGGCTGGCTTACCATTGCAACTTGT
 CATCTTGGCTCCCGAAATCCTGAGCTCTACACAGCTTATCGATATCATTACACCGCTGCAGCAGGAG
 CAAATAAAGAATTAATAAAAAGTTTACAAGCTACTGCCCTCCGAATTTATGATCCACAAGAAGGTGCTGT
 GGTGGTTCTCCCTGCAGACTCTCAGCAGCGTTTGGTTCAGCTTGTATTTCTACCCAGTCTGCCGGCT
 GATTTGCTTTCTCGGTTAAGTCGTTGCTGTATTATGGGAAGACTCAGTTCAGTTTGGCTGCCATGCTTA
 TCGGGACTACTGCACATGAGATCATTTTTCTGGTGGAAAGTATTCAGCTAAAGACTGGTTGATGAGTGA
 TGTAGACTATTTAGCTTCTATTTTCCACACTACAGGGTTTTCGAAAGAGGAGTTGACTTGGCTTCAG
 AGCCTTCGAGGAGTTCCTCATGTCATCCAGACACAGCTTCCCCTGTGCTTCTACCTACAGATTTGG
 ATCAATTTTACACCCTGGGATGTAACAGAGGCGAGTTTTTACAGTATTATTGGTTATTCCTGCCGAAG
 TCAGAACTTTGACATCTTGCAAAGTGCCATCAGTAAGCATTTGGTTGGGTTGACTGTAATTCCTGACAGC
 ACGGCTGGCTGTGTTTTGGTGTTATCTGTAAGCTCCTGGATCATACTTGTGTAGTTAGTGAGACTCTAC
 TGCCATTTCTGGCTTCTGTTGCTACAGCTTCTTTATTTTCTGCTCACTATAGAGAAAGGGGAAGCAGA
 ACATCTAAGAAAGAGGACAAGCTGTGGGGGTCTGTGCTCCATCCTGGCTCTCTTGCCTCGAGTCCCTC
 AGGTTGATGCTGCAGAGCCTGCGGGTGAACAGAGTTGGGCTGAGGAGCTGCCTGTTGTGGGCCAGCTGC
 TTCGACTGCTGCTCAGCATGCACCCCTCAGGACTCATATGTTGACCAATGCGATCTTGGTGCAGCAGAT
 CATCAAGAATATCAGCATTGAAGAGTGAAGTGTTCAGGAACAGTGGCTCACAGACTTACATTACTGC
 TTTAACGTGTATCACTGGGCATCCCCAAGGGCCAGTGCAGTGGCTACAGTGTAT

ACGCGTACGCGGCCGCTCGAGCAGAAACTCATCTCAGAAGAGGATCTGGCAGCAAATGATATCCTGGATT
 ACAAGGATGACGACGATAAGGTTTAA

Protein Sequence: >RC205997 protein sequence
 Red=Cloning site Green=Tags(s)

MTKKRKRQHFQKVKLVKVGKKPKLQNA TP TNFKTKTIHLPEQLKEDGTLPTNRRKLNKDLLSQMHYH
 AGVKQSALLGLKDLLSQYFII DAHLSNLS SEVTAVFTDKDANVRLAAVQLLQFLAPKIRAEQISPFPL
 VSAHLSAMTHITEGIQEDSLKVL DILLEQYPALITGRSSILLKNFVELISHQQLSKGLINRDRSQSWIL
 SVNPNRRLTSQQWRLKVLVRLSKFLQALADGSSRLRESEGLQE QKENPHATSNSIFINWKEHANDQQHIQ
 VYENGGSQPNVSSQFRLRYLVGGLSGVDEGLSSTENLKGFIEIIIPLLIECWVEAVPPQLATPVGNGIER
 EPLQVMQQVLNIIISLLWKL SKQQDETHKLESWLRKNYLIDFKHHFMSRFPYVLEITKHKGKEPNKSIKH
 CTVLSNNIDHLLNLTLSDIMVSLANASTLQKDCSWIEMIRK FVTETLEDGSR LNSKQLNRLLG VSWRLM
 QIQPNREDTETLIKAVYTYQQRGLILPVRTL LLLKLF SKIYQTEELRSCRFRYRSKVL SRWLAGLPLQLA
 HLGSRNPELSTQLIDIHTAAARANKELLKSLQATALRIYDPQEGAVVLPAD SQRLVQLVYFLPSLPA
 DLLSRLSRCCIMGRLSSSLAAMLIGILHMRSSFSGWKYS AKDWLMSD VDYF SFLFSTLTGFSKEELTWLQ
 SLRGVPHVIQTQLSPVLLYLTDLDQFLHHDVTEAVFHSLLVIPARSQNF DILQSAISKHLVGLTVIPDS
 TAGCVFVICKLLDHTCVVSETLLPFLASCCYSLLYFLLTIEKGEAEHLRKRDKLWGVCVSLALLPRVL
 RLMLQSLRVNRVGP EELPVVGQLLRLLLQHAPLRTHMLTNAILVQQIIKNITTLKSGSVQEQLTDLHYC
 FNVYITGHPQGSALATVY

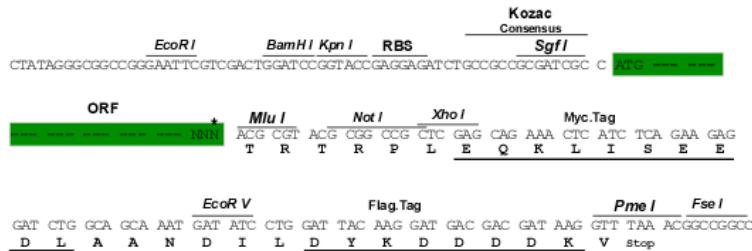
TRTRPLEQKLISEEDLAANDILDYKDDDDKV

Chromatograms: https://cdn.origene.com/chromatograms/mk6828_a06.zip

Restriction Sites: SgfI-MluI

Cloning Scheme:

Cloning sites used for ORF Shuttling:



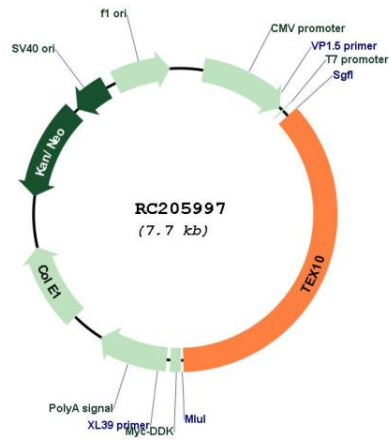
* The last codon before the Stop codon of the ORF

ACCN: NM_017746

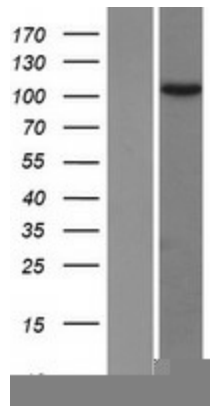
ORF Size: 2787 bp

OTI Disclaimer:	The molecular sequence of this clone aligns with the gene accession number as a point of reference only. However, individual transcript sequences of the same gene can differ through naturally occurring variations (e.g. polymorphisms), each with its own valid existence. This clone is substantially in agreement with the reference, but a complete review of all prevailing variants is recommended prior to use. More info
OTI Annotation:	This clone was engineered to express the complete ORF with an expression tag. Expression varies depending on the nature of the gene.
Components:	The ORF clone is ion-exchange column purified and shipped in a 2D barcoded Matrix tube containing 10ug of transfection-ready, dried plasmid DNA (reconstitute with 100 ul of water).
Reconstitution Method:	<ol style="list-style-type: none">1. Centrifuge at 5,000xg for 5min.2. Carefully open the tube and add 100ul of sterile water to dissolve the DNA.3. Close the tube and incubate for 10 minutes at room temperature.4. Briefly vortex the tube and then do a quick spin (less than 5000xg) to concentrate the liquid at the bottom.5. Store the suspended plasmid at -20°C. The DNA is stable for at least one year from date of shipping when stored at -20°C.
Note:	Plasmids are not sterile. For experiments where strict sterility is required, filtration with 0.22um filter is required.
RefSeq:	NM_017746.4
RefSeq Size:	3129 bp
RefSeq ORF:	2790 bp
Locus ID:	54881
UniProt ID:	Q9NXF1
Cytogenetics:	9q31.1
MW:	105.5 kDa
Gene Summary:	Functions as a component of the Five Friends of Methylated CHTOP (5FMC) complex; the 5FMC complex is recruited to ZNF148 by methylated CHTOP, leading to desumoylation of ZNF148 and subsequent transactivation of ZNF148 target genes (PubMed:22872859). Component of the PELP1 complex involved in the nucleolar steps of 28S rRNA maturation and the subsequent nucleoplasmic transit of the pre-60S ribosomal subunit (PubMed:21326211).[UniProtKB/Swiss-Prot Function]

Product images:



Circular map for RC205997



Western blot validation of overexpression lysate (Cat# [LY413572]) using anti-DDK antibody (Cat# [TA50011-100]). Left: Cell lysates from untransfected HEK293T cells; Right: Cell lysates from HEK293T cells transfected with RC205997 using transfection reagent MegaTran 2.0 (Cat# [TT210002]).