

Product datasheet for RC205992

KTEL1 (POGLUT1) (NM_152305) Human Tagged ORF Clone

Product data:

Product Type:	Expression Plasmids
Product Name:	KTEL1 (POGLUT1) (NM_152305) Human Tagged ORF Clone
Tag:	Myc-DDK
Symbol:	POGLUT1
Synonyms:	C3orf9; CLP46; hCLP46; KDELCL1; KTELC1; LGMD2Z; LGMDR21; MDS010; MDSRP; Rumi
Vector:	pCMV6-Entry (PS100001)
E. coli Selection:	Kanamycin (25 ug/mL)
Cell Selection:	Neomycin
ORF Nucleotide Sequence:	>RC205992 ORF sequence Red=Cloning site Blue=ORF Green=Tags(s)

TTTTGTAATACGACTCACTATAGGGCGCCGGAATTCGTCGACTGGATCCGGTACCGAGGAGATCTGCC
GCC**CGGATCGCC**

ATGGAGTGGTGGGCTAGCTCGCCGCTTCGGCTCTGGCTGCTGTTGTTCTCCTGCCCTCAGCGCAGGGCC
GCCAGAAGGAGTCAGGTTCAAAATGAAAGTATTTATTGACCAAATTAACAGGTCTTTGGAGAATTACGA
ACCATGTTCAAGTCAAACTGCAGCTGCTACCATGGTGTATAGAAGAGGATCTAACTCCTTTCCGAGGA
GGCATCTCCAGGAGGATGATGGCAGAGGTAGTCAGACGGAAGCTAGGGACCCACTATCAGATCACTAAGA
ACAGACTGTACCGGAAAATGACTGCATGTTCCCTCAAGGTGTAGCGGTGTTGAGCACTTTATTTTGGGA
AGTGATCGGGCGTCTCCCTGACATGGAGATGGTGTCAATGTACGAGATTATCCTCAGGTTCTAAATGG
ATGGAGCCTGCCATCCCAGTCTTCTCCTCAGTAAGACATCAGAGTACCATGATATCATGTATCCTGCTT
GGACATTTTGGGAAGGGGACCTGCTGTTTGGCCAATTTATCCTACAGGTCTTGGACGGTGGGACCTCTT
CAGAGAAGATCTGGTAAGGTCAGCAGCACAGTGGCCATGGAAAAAGAAAACTTACAGCATATTTCCGA
GGATCAAGGACAAGTCCAGAACGAGATCCTCTCATTCTTCTGTCTCGAAAAACACAAAACTGTTGATG
CAGAATACACAAAAACCAGGCCTGAAATCTATGAAAGATACCTTAGGAAAGCCAGCTGTAAGGATGT
CCATCTTGTGGATCACTGCAAAACAAGTATCTGTTAATTTTCGAGGCGTAGCTCAAGTTTCCGGTTT
AAACACCTCTTCTGTGTGGCTCACTTGTTTTCCATGTTGGTGTGAGTGGCTAGAATCTTCTATCCAC
AGCTGAAGCCATGGGTTCACTATATCCCAGTCAAAACAGATCTCTCCAATGTCCAAGAGCTGTTACAATT
TGTAAGCAAAATGATGATGTAGCTCAAGAGATTGCTGAAAGGGGAGCCAGTTTATTAGGAACCATTTG
CAGATGGATGACATCACCTGTTACTGGGAGAACCTCTTGAGTGAATACTCTAAATTCCTGTCTTATAATG
TAACGAGAAGGAAAGTTATGATCAAATATTCCCAAAATGTTGAAAACCTGAACCTA

ACGCGTACGCGGCCGCTCGAGCAGAACTCATCTCAGAAGAGGATCTGGCAGCAAATGATATCCTGGATT
ACAAGGATGACGACGATAAGGTTTAA



[View online »](#)

Protein Sequence: >RC205992 protein sequence
 Red=Cloning site Green=Tags(s)

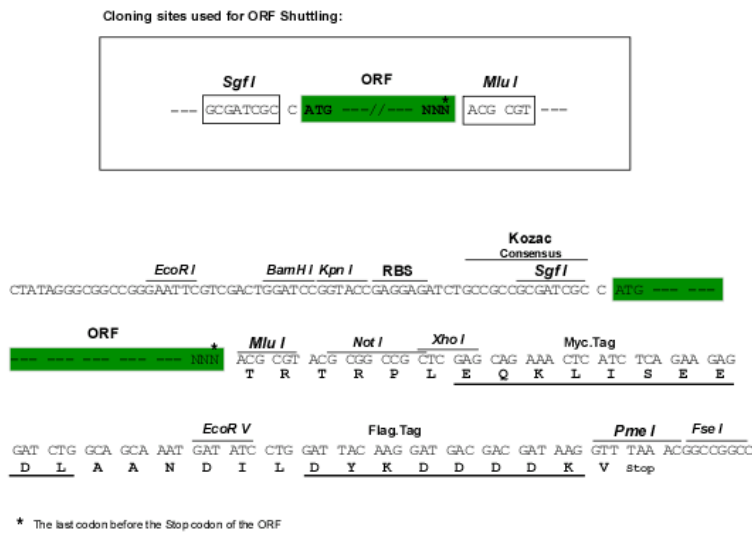
MEWWASSPLRLWLLLFLPSAQGRQKESGSKWKVFIHQINRSLNENYPCSSQNCSCYHGVI EEDLTPFRG
 GISRRMMAEVVRRKLGTHYQITKNRLYRENDCMFSPRCSGVEHF ILEVIGRLPDMEMVINVRDYPQVPKW
 MEPAIPVFSFKTSEYHDIMYPAWTFWEGGPAVWPIYPTGLGRWDLFREDLVRSAAQWPWKKKNSTAYFR
 GSRTSPERDPLILLSRKNTKLVAEYTKNQAWKSMKDTLGKPAAKDVHLVDHCKYKYLNFNFRGVAASFRR
 KHLFLCGSLVFHVGDEWLEFFYPQLKPWVHYIPVKTDLSNVQELLQFVKANDDVAQEIAERGSQFIRNHL
 QMDDITCYWENLLSEYSKFLSYNVTRRKYDQIIPKMLKTEL

TRTRPLEQKLISEEDLAANDILDYKDDDDKV

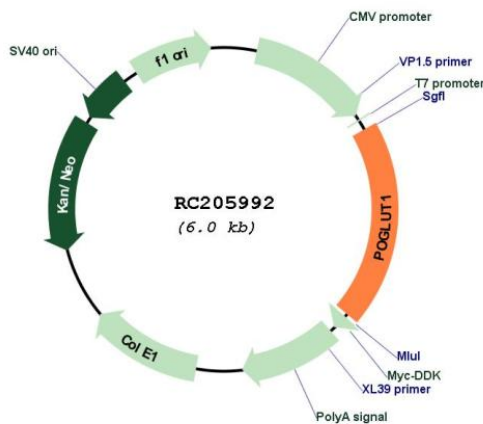
Chromatograms: https://cdn.origene.com/chromatograms/mk6317_b07.zip

Restriction Sites: SgfI-MluI

Cloning Scheme:

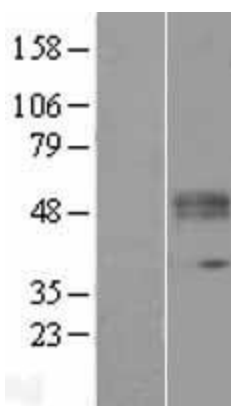


Plasmid Map:

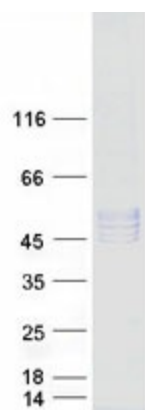


ACCN:	NM_152305
ORF Size:	1176 bp
OTI Disclaimer:	The molecular sequence of this clone aligns with the gene accession number as a point of reference only. However, individual transcript sequences of the same gene can differ through naturally occurring variations (e.g. polymorphisms), each with its own valid existence. This clone is substantially in agreement with the reference, but a complete review of all prevailing variants is recommended prior to use. More info
OTI Annotation:	This clone was engineered to express the complete ORF with an expression tag. Expression varies depending on the nature of the gene.
RefSeq:	NM_152305.1 , NM_152305.2 , NP_689518.1
RefSeq Size:	3552 bp
RefSeq ORF:	1179 bp
Locus ID:	56983
MW:	46.2 kDa
Gene Summary:	This gene encodes a protein with both O-glucosyltransferase and O-xylosyltransferase activity which localizes to the lumen of the endoplasmic reticulum. This protein has a carboxy-terminal KTEL motif which is predicted to function as an endoplasmic reticulum retention signal. This gene is an essential regulator of Notch signalling and likely plays a role in cell fate and tissue formation during development. It may also play a role in the pathogenesis of leukemia. Mutations in this gene have been associated with the autosomal dominant genodermatosis Dowling-Degos disease 4. Alternative splicing results in multiple transcript variants. [provided by RefSeq, Apr 2014]

Product images:



Western blot validation of overexpression lysate (Cat# [LY407662]) using anti-DDK antibody (Cat# [TA50011-100]). Left: Cell lysates from untransfected HEK293T cells; Right: Cell lysates from HEK293T cells transfected with RC205992 using transfection reagent MegaTran 2.0 (Cat# [TT210002]).



Coomassie blue staining of purified POGLUT1 protein (Cat# [TP305992]). The protein was produced from HEK293T cells transfected with POGLUT1 cDNA clone (Cat# RC205992) using MegaTran 2.0 (Cat# [TT210002]).