

## Product datasheet for **RC205991**

### **PAPOLB (NM\_020144) Human Tagged ORF Clone**

#### **Product data:**

Product Type:	Expression Plasmids
Product Name:	PAPOLB (NM_020144) Human Tagged ORF Clone
Tag:	Myc-DDK
Symbol:	PAPOLB
Synonyms:	PAPT; TPAP
Mammalian Cell Selection:	Neomycin
Vector:	pCMV6-Entry (PS100001)
E. coli Selection:	Kanamycin (25 ug/mL)



[View online »](#)

ORF Nucleotide  
Sequence:

>RC205991 representing NM\_020144  
 Red=Cloning site Blue=ORF Green=Tags(s)

TTTTGTAATACGACTCACTATAGGGCGGCCGGGAATTCGTCGACTGGATCCGGTACCGAGGAGATCTGCC  
 GCCCGCATCGCC

ATGATGCCGTTTCCGGTGACAACCCAGGGACCACCGCAGCCGGCCGCCCGCAATCGCTACGGCGTCT  
 CCTCGCCTATCAGTCTAGCGGTCCCAAGGAGACGGACTGCCTCCTCACCCAGAGGCTAATAGAAACCT  
 CAGGCCCTTCGGGGTCTTGAAGAGGAAGAGAACTGCAGCGCAGGATTTTGTGTTTTGAAAAATTAAT  
 AATCTGGTAAAGGAATGGATACGCGAAATCAGTAAAAGCAAGAGTCTTCCCAGTCTGTAATTGAAAACG  
 TTGGAGGAAAGATTTTTACGTTTGGCTCTTACAGATTAGGAGTACATACGAAAGGCGCAGATATTGACGC  
 CTTGTGCGTTGCACCAAGTCATGTGGATCGAAGCGACTTTTTACCTCATTCTATGCTAACTGAAACTA  
 CAGGAGGAAGTAAAGATTTAAGGGCTGTCGAGGAGGCATTTGTGCCAGTTATCAAAGTGTGTTTGTG  
 GGATAGAGATTGATTTTTATTTGCAAGATTAGCACTACAGACTATTCCAGAAGATTTGGACTTAAGAGA  
 TGACAGTCTACTTAAAAATTTAGACATTAGATGCATAAGAAGCCTTAATGTTGCCGGGTAAACCGATGAA  
 ATTTTACATCTAGTGCCAAACATTGACAACCTTCAGGCTGACTCTGAGAGCCATCAAAGTGTGGGCCAAGT  
 GCCACAATATCTATTCCAATATATTAGGTTTCTCGGAGGTGTTTCTGGGCCATGCTAGTAGCAAGAAC  
 TTGTACGCTTTATCCAAATGCAGTAGCGTCAACTCTTGTACGGAATTTCTTGGTATTTTTCAGAAATGG  
 GAATGGCCAAACCCAGTGTACTGAAGGAGCCTGAAGAACGGAATCTTAATTTGCCTGTATGGGACCCAA  
 GAGTAAATCCCAGTGATAGGTACCATCTTATGCCTATCATCACACCAGCATAACCCACAGCAGAACTCCAC  
 ATACAACGTGTCTATTTCAACCAGGATGGTCATGATTGAGGAGTTTAAACAGGGGCTTGCATCACACAC  
 GAGATTTTGTCTAAGTAAGGCAGAGTGGTCCAACTCTTTGAAGCTCCAAGCTTCTTTCAAAGTACAAGC  
 ATTATATTGACTTCTGGCAAGTGCATCAACAGAAAAACAACATTTAGAATGGGTGGGCTTGGTGGATC  
 AAAGATCCGAATCCTGGTTGGGAGCTTGGAGAAGAATGAATTTATTACACTGGCACATGTGAATCCACAG  
 TCATTTCCAGCACCCAAAGAAAATCCTGATATGGAAGAATTTCTGACAATGTGGGTGATTGGGTTAGGGC  
 TAAAAAGCCAGATAATTCTGAAATTCAGCATTGATCTCACCTATGATATCCAGTCTTTCACAGATAC  
 TGTTTTATAGGCAAGCAGTGAATAGTAAGATGTTTGGATGGGTATGAAAATTAAGTCAATGCATTTAAGA  
 AGAAAGGAACTTCACCAGCTGCTGCCTCATCATGTGCTTCAGGACAAGAAAGCACACTCAACAGAAGGTA  
 GAAGATTGACAGATTTGAACGACAGCAGCTTTGACTTGTCTGCAGGCTGTGAAAACAGCATGTCTGTGCC  
 TTCATCTACTAGCACTATGAAGACAGGCCATTGATTAGCAGTCTCAGGGTAGAAACAGTCTGCCTTG  
 GCTGTAATGACAGCATCTGTGGTAACATACAGGCTACTGAATTTTCTTGAACAGGTGAATACCAATG  
 AAAGTTACAGGGGTTGCATTAACGAAAGTATTCCTCACGCTGTCTCTCAGCCTGCCATTTCTCCATCACC  
 AAAGGCCATGGTCGCCAGAGTTGTTTCTCAACATGTCTCATAAGCCATCCAGACCTTCAGGAAACTCAG  
 CAACAAACATATCTAATCTTA

ACGCGTACGCGGCCGCTCGAGCAGAACTCATCTCAGAAGAGGATCTGGCAGCAATGATATCCTGGATT  
 ACAAGGATGACGACGATAAGGTTTAA



**Reconstitution Method:**

1. Centrifuge at 5,000xg for 5min.
2. Carefully open the tube and add 100ul of sterile water to dissolve the DNA.
3. Close the tube and incubate for 10 minutes at room temperature.
4. Briefly vortex the tube and then do a quick spin (less than 5000xg) to concentrate the liquid at the bottom.
5. Store the suspended plasmid at -20°C. The DNA is stable for at least one year from date of shipping when stored at -20°C.

**Note:** Plasmids are not sterile. For experiments where strict sterility is required, filtration with 0.22um filter is required.

**RefSeq:** [NM\\_020144.5](#)

**RefSeq Size:** 4271 bp

**RefSeq ORF:** 1914 bp

**Locus ID:** 56903

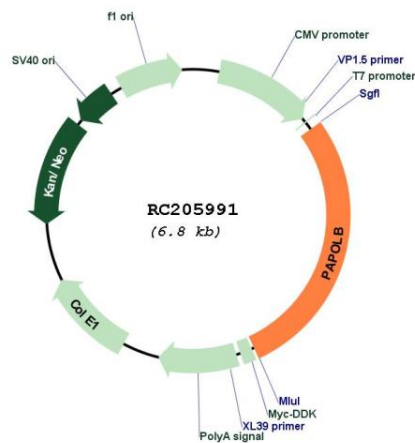
**UniProt ID:** [Q9NRJ5](#)

**Cytogenetics:** 7p22.1

**Protein Pathways:** RNA degradation

**MW:** 71.8 kDa

### Product images:



Circular map for RC205991