

Product datasheet for **RC205990**

ACT (FHL5) (NM_020482) Human Tagged ORF Clone

Product data:

Product Type:	Expression Plasmids
Product Name:	ACT (FHL5) (NM_020482) Human Tagged ORF Clone
Tag:	Myc-DDK
Symbol:	ACT
Synonyms:	1700027G07Rik; ACT; dj393D12.2; FHL-5
Mammalian Cell Selection:	Neomycin
Vector:	pCMV6-Entry (PS100001)
E. coli Selection:	Kanamycin (25 ug/mL)
ORF Nucleotide Sequence:	>RC205990 ORF sequence Red=Cloning site Blue=ORF Green=Tags(s)

TTTTGTAATACGACTCACTATAGGGCGCCGGGAATTCGTCGACTGGATCCGGTACCGAGGAGATCTGCC
GCC**CGATCGCC**

ATGACAACTGCTCACTTTTACTGTCAATACTGCACAGCATCACTTCTTGGGAAGAAATATGTAATAAGG
ATGACAGTCCATACTGTGTACATGTTATGATCGTGATTTTCTAACTATTGCGAGGAATGCAAAAAACC
AATTGAATCTGATTCTAAGGATCTTTGTTACAAAGACCGGCACTGGCATGAAGGATGCTTCAAGTGACCC
AAATGCAATCACTCTTTGGTGGAAAAGCCTTTTGTGCAAGGATGAGCGCCTGCTGTGCACGGAGTGCT
ATTCTAACGAGTGCTCCTCCAAGTGCTTCCACTGCAAGAGGACCATCATGCCTGGTCCCGCAAAATGGA
ATTTAAGGGAAACTACTGGCATGAAACCTGTTTTGTGTGTGAGAATTGCCGACAACCTATAGGGACAAAG
CCTTTGATCTCCAAGAGAGTGGCAATTATTGTGTGCCATGTTTTGAGAAGGAGTTTGTCTACTACTGCA
ACTTTTGTAAAGAGGTGATAACTTCAGGTGGGATAACATTTTGTGACCAGCTATGGCATAAAGAGTGTTT
TCTGTGTAGTGACTGTAGGAAAGATCTCTGTGAAGAACAGTTCATGTCCAGAGACGACTATCCATTCTGC
ATGGACTGCTACAACCATCTTTATGCCAACAGTGTGTAGCCTGTTCCAAACCCATTAGTGGTCTCACAG
GTGCCAAGTTTATCTGCTTTCAAGACAGCCAGTGGCATAGCGAATGCTTTAACTGCGGGAATGCTCTGT
CTCCTTGGTGGTAAAGGCTTCTGACCCAGAACAAGGAAATCTTCTGCCAAAAATGTGGCTCCGGAATG
GACTGACATC

ACGCGTACGCGGCCGCTCGAGCAGAAACTCATCTCAGAAGAGGATCTGGCAGCAAATGATATCCTGGATT
ACAAGGATGACGACGATAAGGTTTAA



[View online »](#)

Protein Sequence: >RC205990 protein sequence
Red=Cloning site Green=Tags(s)

MTTAHFYCQYCTASLLGKKYVLKDDSPYCVTCYDRVFSNYCEECKKPIESDKDLCYKDRHWHEGCFKCT
 KCNHSLEVEKPF AAKDERLLCTECYSNECSSKCFHCKRTIMPGSRKMEFKGNYWHETCFVCENCRQPIGTK
 PLISKESGNYCVPCEFEFAHYCNFCKKVITSSGITFCQDLWHKECFLCSDCRKDLCEEQFMSRDDYPFC
 MDCYNHLYANKCVACSKPISGLTGAKFICFQDSQWHSECFNCGKCSVSLVGKGFLTQNKEIFCQKCGSGM
 DTDI

TRTRPLEQKLISEEDLAANDILDYKDDDDKV

Chromatograms: https://cdn.origene.com/chromatograms/mk6320_f10.zip

Restriction Sites: SgfI-MluI

Cloning Scheme:



ACCN: NM_020482

ORF Size: 852 bp

OTI Disclaimer: The molecular sequence of this clone aligns with the gene accession number as a point of reference only. However, individual transcript sequences of the same gene can differ through naturally occurring variations (e.g. polymorphisms), each with its own valid existence. This clone is substantially in agreement with the reference, but a complete review of all prevailing variants is recommended prior to use. [More info](#)

OTI Annotation: This clone was engineered to express the complete ORF with an expression tag. Expression varies depending on the nature of the gene.

Components: The ORF clone is ion-exchange column purified and shipped in a 2D barcoded Matrix tube containing 10ug of transfection-ready, dried plasmid DNA (reconstitute with 100 ul of water).

Reconstitution Method:

1. Centrifuge at 5,000xg for 5min.
2. Carefully open the tube and add 100ul of sterile water to dissolve the DNA.
3. Close the tube and incubate for 10 minutes at room temperature.
4. Briefly vortex the tube and then do a quick spin (less than 5000xg) to concentrate the liquid at the bottom.
5. Store the suspended plasmid at -20°C. The DNA is stable for at least one year from date of shipping when stored at -20°C.

RefSeq: [NM_020482.5](#)

RefSeq Size: 2135 bp

RefSeq ORF: 855 bp

Locus ID: 9457

UniProt ID: [Q5TD97](#)

Cytogenetics: 6q16.1

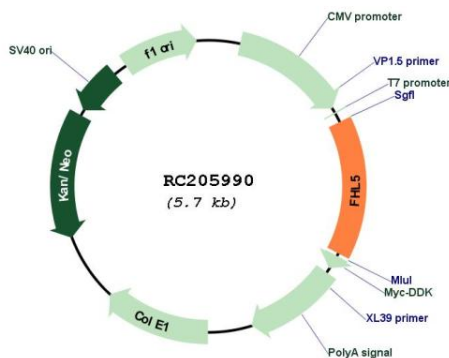
Domains: LIM

Protein Families: Druggable Genome

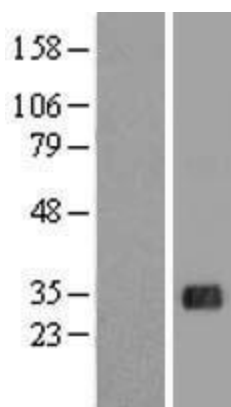
MW: 32.8 kDa

Gene Summary: The protein encoded by this gene is coordinately expressed with activator of cAMP-responsive element modulator (CREM). It is associated with CREM and confers a powerful transcriptional activation function. CREM acts as a transcription factor essential for the differentiation of spermatids into mature spermatozoa. There are multiple polyadenylation sites found in this gene. Polymorphisms in this gene may be associated with susceptibility for migraine headaches. Alternative splicing results in multiple transcript variants encoding the same protein. [provided by RefSeq, Apr 2016]

Product images:



Circular map for RC205990



Western blot validation of overexpression lysate (Cat# [LY412449]) using anti-DDK antibody (Cat# [TA50011-100]). Left: Cell lysates from untransfected HEK293T cells; Right: Cell lysates from HEK293T cells transfected with RC205990 using transfection reagent MegaTran 2.0 (Cat# [TT210002]).