

Product datasheet for **RC205989**

GSTCD (NM_001031720) Human Tagged ORF Clone

Product data:

Product Type:	Expression Plasmids
Product Name:	GSTCD (NM_001031720) Human Tagged ORF Clone
Tag:	Myc-DDK
Symbol:	GSTCD
Mammalian Cell Selection:	Neomycin
Vector:	pCMV6-Entry (PS100001)
E. coli Selection:	Kanamycin (25 ug/mL)



[View online »](#)

**ORF Nucleotide
Sequence:**

>RC205989 ORF sequence
 Red=Cloning site Blue=ORF Green=Tags(s)

TTTTGTAATACGACTCACTATAGGGCGGCCGGAATTCGTCGACTGGATCCGGTACCGAGGAGATCTGCC
 GCC**CGGATCGCC**

ATGAAAGCCATAAAGAAAAGTCTTACAGAAGAAGAATACCTGTACCTGGACTTTTCTCACAAACAGAAG
 GATGCATCTTTCCTTTCATACATCTGTAACCTTTATTTCTGTTATCTTACTGTGACTGTAAAATCTTTAA
 AATTTGCTTAGTTGTCACCAAAGAGGTGAGTAGAGATAGTTCACTACTAAGAGATGACCTGATCCAGGAT
 GTTGAAATACAGATTATTTCAAGGCAGGAGCTCCACCAATAGTCCAAAATTGCTGTTTGCCTGCAGTAG
 TAGAACGATCAGACAATTTTGTAGAGCAGGACTTGTGTTGATTGAGACACATAATCCAGAAATCCTA
 TGAAGCAGACCCCTTAAAGAAGGAACCTTTGGAACCTCTGGGCTTTAAAAAGACTTGCTTAAAGCCTGT
 GCTGAAGTTAGTCAGTGGACCAGGCTATGTGAACCTACCATCCCTTTGGCTATTGAGAATTTCTCAGAG
 AATCTTCTGACCAGCCCAACTATACCTGTAGAAATACTACAGCTAGAGAAAAAGCTTAGTGAGCCTGT
 TAGAGTGCATAATGATGATAAACTCCGCAGGCAGAAGCTCAAGCAACAGAAGGCTGATGGAGTTGGCCT
 CCCCTTACTAAGGAAAGGCAAAGAGCAAGGTCCACACACAGGAAACATCTGAAGGGTTGGATTCTTCAT
 CCAAGAGTCTGGAAGTGAAGTGGCATTCTCAAAGCTCACAGTACAGGAAGAACCAGCTACTACCAACAG
 AGAGCCTTCTCACATCAGAAAAGCAAAGCCTCCGACCTTCCACCTCTGGAGCATGTGTTGCAGAAGGG
 CTTTACTTCACTCTGGCAGATATTGTGCTCTTGCCTGTATCCATCATTCTTGGTAATTATCAGCAGGA
 AATTTTCTGAGAAGCTGGTAGAATTTCCATTGCTAGCCTCTTGGTACCAGAGGATTCAGGAAGTGCCAGG
 AGTAAAAACAGCTTCTAAGTGTGGGATCCAATTTCTCCATTTACCAAAGTTGTTGACAACCTCAACTGAA
 CAGCATCCAACTTATGTGAAGTCCAGGTGTAGAAGAGCAAAGCGATCCTTTATTTATAGGAGGACCAA
 GACCAACCATGGCCAAGTTAATGGAAAAGGGCATTGAAGTGATGTTTTCTCCCACCCTTGCCCTACTTG
 GACTCTTGATTGGAATGTTCTCCCTGCAGCAGTCAGCCCAAAGGAAGTAAAATGTCCAGTGATCGAGCT
 TTGAGGAAGCAGCAACAGTTGAACAACCTTGTCTATGTGGTAACAAATCAGGCCAAACCTGGTGACAGAA
 TTGTGGATTTCTGCAGCGGTGGGGCCATGTTGGAATTGTCTTGTCTCACATGCTGCCATCATGTCAGGT
 TACATTAATAGAAAACAAGGAATTATCATTAAATTCGTGCTAAGAAGAGAAGTGATGAACCTGGTTTAAAGC
 AACATTTGGTTCATTCAAGCAAATATGGAATATTTTACTGGGATGTTTAAATATTGGAGTAGCATTGCATG
 CTTGTGGAGTGGCAACAGACATGGTATTGAGCACTGTATCAAAACACGGGCTTCTTCTGCATGCCCC
 TTGCTGTTATGGTTTCATTGAGAACACCTCAAAGTTCAATTTTCCAAAAGTGAACAATTCAAGAAAAGT
 TTATCATACAAGGAACACATGATTCTGTGCAGATTTGCAGACCAGACAGCTGTCCAGCTCCACCCCAAC
 GAAGGCTCATAGGAAAACAGTGCATGTGCTTGGTGGATCTGGATCGAGCAAGAGCTGCAGAAGAATGTGG
 ATACTCCGTTCAAGTGATATCCATGGAGCCAGAGAGCTGCTCTCCAAAATAACATGATTGTGGGAGTC
 CCCATT

ACGCGTACGCGGCCGCTCGAGCAGAAACTCATCTCAGAAGAGGATCTGGCAGCAAATGATATCCTGGATT
 ACAAGGATGACGACGATAAGGTTTAA

Protein Sequence:

>RC205989 protein sequence
Red=Cloning site Green=Tags(s)

MKAIKKSLTEEEYLDFSHQTEGCI FPLHTSVTLFLLSYCDCKIFKICLVVTKEVSRDSSLRDDL IQD
VEIQIISRQELPPIVQNCCLPAVVERSDNFCRAGLAVLRHIIQKSYEADPLKKELELLGFKKTKLKAC
AEVSQWTRLCEL TIPLAIENFLRESSDQPPTIPVEILQLEKKLSEPVVHNDKLRQKLRQKADGVGP
PLTKGKAKSKVHTQETSEGLDSSSKSLELKVAFSKLTVQE EPATTNREPSHIRKAKASDL PPLEHVFAEG
LYFTLADIVLLPCIHHFLV IISRK FSEKLVEFPLLASWYQRIQEVPGVK T ASKCGIQFLHLPKLLTSTE
QH PNLCEVPGVEEQSDPL F IGGPRPTMAKLM EK GIEVMFSPHPCPTW TLDWNVLPA AVSPKEGKMSSDRA
LRKQQQLN NLYVVTNQAKPGDRIVDFCSGGGHVGI VLAHMLPSCQVTL IENKELSLIRAKKRSDELGLS
NIWFIQANMEYFTGMFNIGVALHACGVATDMVIEHCIKTRASFVTCPCCYGFIQNTSKFNFPSKSEQFKKT
LSYKEHMILCRFADQTA VQLPPQRRLIGKQCMCLVDLDRARAAEECGYSVQVISM EPESCKNNMIVGV
PI

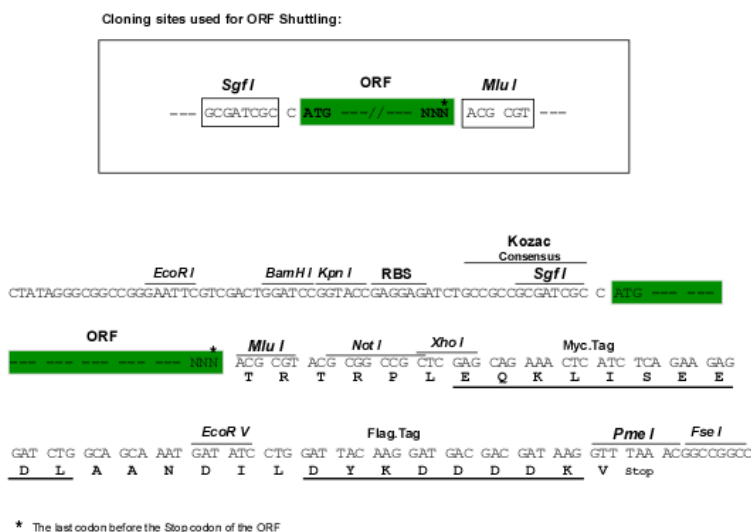
TRTRPLEQKLISEEDLAANDILDYKDDDDKV

Chromatograms:

https://cdn.origene.com/chromatograms/mk6534_b04.zip

Restriction Sites:

SgfI-MluI

Cloning Scheme:**ACCN:**

NM_001031720

ORF Size:

1026 bp

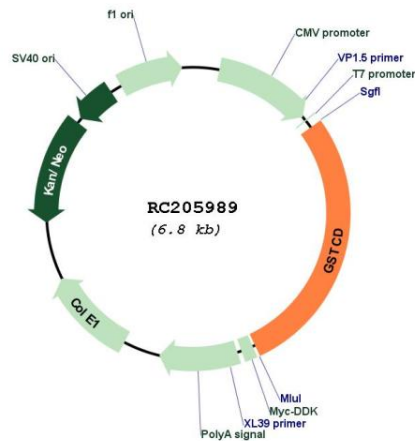
OTI Disclaimer:

The molecular sequence of this clone aligns with the gene accession number as a point of reference only. However, individual transcript sequences of the same gene can differ through naturally occurring variations (e.g. polymorphisms), each with its own valid existence. This clone is substantially in agreement with the reference, but a complete review of all prevailing variants is recommended prior to use. [More info](#)

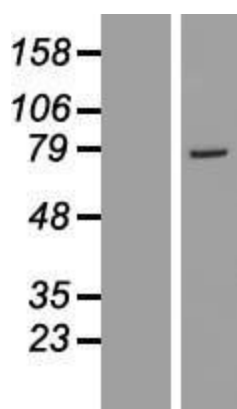
OTI Annotation:

This clone was engineered to express the complete ORF with an expression tag. Expression varies depending on the nature of the gene.

Components:	The ORF clone is ion-exchange column purified and shipped in a 2D barcoded Matrix tube containing 10ug of transfection-ready, dried plasmid DNA (reconstitute with 100 ul of water).
Reconstitution Method:	<ol style="list-style-type: none">1. Centrifuge at 5,000xg for 5min.2. Carefully open the tube and add 100ul of sterile water to dissolve the DNA.3. Close the tube and incubate for 10 minutes at room temperature.4. Briefly vortex the tube and then do a quick spin (less than 5000xg) to concentrate the liquid at the bottom.5. Store the suspended plasmid at -20°C. The DNA is stable for at least one year from date of shipping when stored at -20°C.
RefSeq:	<u>NM_001031720.1</u> , <u>NP_001026890.1</u>
RefSeq Size:	4122 bp
RefSeq ORF:	1902 bp
Locus ID:	79807
UniProt ID:	<u>Q8NEC7</u>
Cytogenetics:	4q24
Protein Families:	Druggable Genome
MW:	71 kDa

Product images:

Circular map for RC205989



Western blot validation of overexpression lysate (Cat# [LY422170]) using anti-DDK antibody (Cat# [TA50011-100]). Left: Cell lysates from untransfected HEK293T cells; Right: Cell lysates from HEK293T cells transfected with RC205989 using transfection reagent MegaTran 2.0 (Cat# [TT210002]).