

Product datasheet for **RC205987**

RNF23 (TRIM39) (NM_172016) Human Tagged ORF Clone

Product data:

Product Type:	Expression Plasmids
Product Name:	RNF23 (TRIM39) (NM_172016) Human Tagged ORF Clone
Tag:	Myc-DDK
Symbol:	RNF23
Synonyms:	RNF23; TFP; TRIM39B
Mammalian Cell Selection:	Neomycin
Vector:	pCMV6-Entry (PS100001)
E. coli Selection:	Kanamycin (25 ug/mL)



[View online »](#)

ORF Nucleotide Sequence:

>RC205987 ORF sequence
 Red=Cloning site Blue=ORF Green=Tags(s)

TTTTGTAATACGACTCACTATAGGGCGGCCGGGAATTCGTCGACTGGATCCGGTACCGAGGAGATCTGCC
 GCC**GCGATCGCC**

ATGGCAGAGACAAGTCTGTTAGAGGCTGGGCGCTCTGCAGCCTCTACAGCTGCGGCTTTGGAGAACTTAC
 AGGTGGAGGCGAGCTGCTCTGTGTGCTGGAGTATCTGAAGGAACCTGTCATCATTGAGTGTGGGCACAA
 CTTCTGCAAAGCTTGCATCACCCGCTGGTGGGAGGACCTAGAGAGGGACTTCCCTTGTCTGTCTGTCTGCA
 AAGACATCCCGCTACCGCAGTCTCCGACCTAATCGGCAACTAGGCAGTATGGTGGAAATTGCCAAGCAGC
 TCCAGGCCGTC AAGCGGAAGATCCGGGATGAGAGCCTCTGCCCAACACCATGAGGCCCTCAGCCTTTT
 CTGTTATGAGGACCAGGAGGCTGTATGCTTGATATGTGCAATTTCCACACCCACCGGGCCACACCGTT
 GTGCCACTGGACGATGCTACACAGGAGTACAAGGAAAACTGCAGAAGTGTCTGGAGCCCTGGAACAGA
 AGCTGCAGGAGATCACTCGTCAAGTCTCTGAGGAGAAGAAGCCTGGTGAAGTCAAGAGACTAGTGA
 AAGTCGCGCAGCAGATCTTGAGGGAGTTTGAAGAGTTCATAGCGGGTGGATGAAGAGCAGCAGGTG
 TTGCTTTACGACTGGAAGAAGAGGAACAGGACATTCTGCAGCGACTCCGAGAAAATGCTGCTCACCTTG
 GGGACAAGCGCCGGACCTGGCCCACTTGGCTGCCGAGGTGGAGGGCAAGTGCTTACAGTCAGGCTTCGA
 GATGCTTAAGGATGTCAAAGTACCCTGGAAAAATGTGAAAAGGTGAAGACCATGGAGGTGACTTCAGTA
 TCCATAGAGCTGGAAAAGAACTCAGCAATTTTCCCGCAGTACTTTGCCCTAAGGAAAATCCTTAAAC
 AGCTAATTGCGGATGTGACCCTGGACCTGAGACAGCTCATCCTAACCTAGTCTGTCTGAGGATCGTAA
 GAGCGTCAAGTTCGTGGAGACAAGACTCCGGGATCTCCCTGACACACCAAGGCGTTTACCTTCTACCT
 TCGCTCTGGCTACTGAGGGTTTCACTCAGGTCGACACTACTGGGAGGTGGAGGTGGGCGACAAGACCC
 ACTGGGCAGTGGGTGTATGCCGGGACTCCGTGAGCCGAAAGGGGAGTTGACTCCACTCCCTGAGACTGG
 CTACTGGCGGGTGCAGCTATGGAATGGGGACAAATATGCAGCCACCACACCTTTTACCCTTTGCAC
 ATCAAGGTGAAACCAAGCGGTAGGCATATTCCTAGACTATGAGGCCGGCACACTGTCTTTCTACAATG
 TCACAGACCGCTCTCATATCTACACCTTACTGATACTTTTACTGAGAACTTTGGCCCTCTTCTACCC
 AGGCATCCGGGCTGGACGGAAGAATGCTGCACCACTTACCATCAGGCCCAACAGATTGGGAG

ACGCGTACGCGGCCGCTCGAGCAGAAACTCATCTCAGAAGAGGATCTGGCAGCAATGATATCCTGGATT
 ACAAGGATGACGACGATAAGGTTTAA

Protein Sequence:

>RC205987 protein sequence
 Red=Cloning site Green=Tags(s)

MAETSLLEAGASAASTAAALENLQVEASCSVCLEYLKEPVIIECGHNFCKACITRWWEDLERDFPCPVC
 KTSRYRSLRPNRQLGSMVEIAKQLQAVKRKIRDESLCPQHHEALSLFCYEDQEAVCLICAI SHTHRAHTV
 VPLDDATQEYKEKLQKCLEPLEQKLEITRCKSSEKPKGELKRLVESRRQQILREFEELHRRLEDEEQV
 LLSRLEEEEDILQRLRENAHLGDKRRDLAHLAAEVEGKCLQSGFEMLKDVKSTLEKCEKVKTMVEVTSV
 SIELEKNFSNFPQYFALRKILKQLIADVTLDPETAHPNLVLSDRKSVKRVETRLRDLPTPRRFTFYP
 CVLATEGFTSGRHYWEVEVGDKTHWAVGVCRDVSRSKRGELTLPETGYWRVRLWNGDKYAATTPFTPLH
 IKVKPKRVGIFLDYEAGTLSFYNVTDTRSHIYTFDTFTEKLWPLFYPGIRGRKNAAPLIRPPTDWE

TRTRPLEQKLI SEEDLAANDILDYKDDDDKV

Chromatograms:

https://cdn.origene.com/chromatograms/mk6319_a11.zip

Restriction Sites:

Sgfl-Mlul

Cloning Scheme:


ACCN: NM_172016

ORF Size: 1464 bp

OTI Disclaimer: The molecular sequence of this clone aligns with the gene accession number as a point of reference only. However, individual transcript sequences of the same gene can differ through naturally occurring variations (e.g. polymorphisms), each with its own valid existence. This clone is substantially in agreement with the reference, but a complete review of all prevailing variants is recommended prior to use. [More info](#)

OTI Annotation: This clone was engineered to express the complete ORF with an expression tag. Expression varies depending on the nature of the gene.

Components: The ORF clone is ion-exchange column purified and shipped in a 2D barcoded Matrix tube containing 10ug of transfection-ready, dried plasmid DNA (reconstitute with 100 ul of water).

Reconstitution Method:

1. Centrifuge at 5,000xg for 5min.
2. Carefully open the tube and add 100ul of sterile water to dissolve the DNA.
3. Close the tube and incubate for 10 minutes at room temperature.
4. Briefly vortex the tube and then do a quick spin (less than 5000xg) to concentrate the liquid at the bottom.
5. Store the suspended plasmid at -20°C. The DNA is stable for at least one year from date of shipping when stored at -20°C.

RefSeq: [NM_172016.2](#), [NP_742013.1](#)

RefSeq Size: 3578 bp

RefSeq ORF: 1467 bp

Locus ID: 56658

UniProt ID: [Q9HCM9](#)

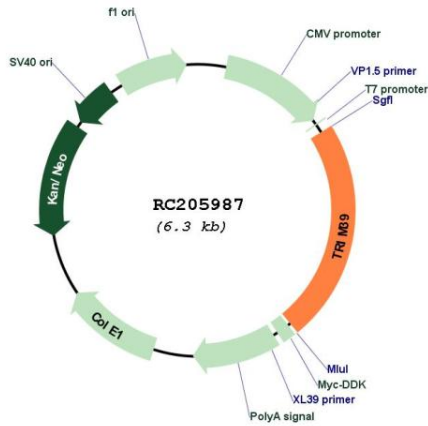
Cytogenetics: 6p22.1

Protein Families: Druggable Genome

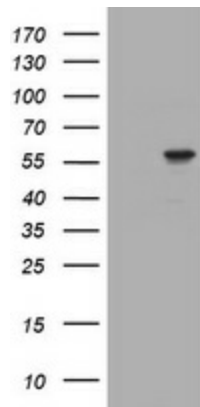
MW: 56.4 kDa

Gene Summary: The protein encoded by this gene is a member of the tripartite motif (TRIM) family. The TRIM motif includes three zinc-binding domains, a RING, a B-box type 1 and a B-box type 2, and a coiled-coil region. The function of this protein has not been identified. This gene lies within the major histocompatibility complex class I region on chromosome 6. Alternate splicing results in two transcript variants encoding different isoforms. [provided by RefSeq, Jul 2008]

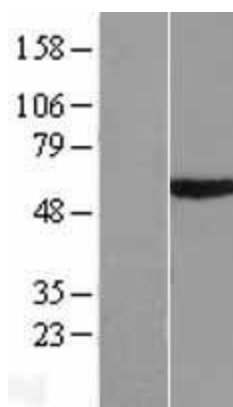
Product images:



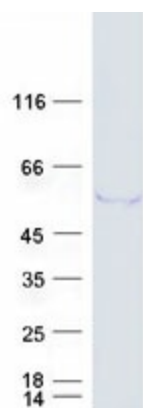
Circular map for RC205987



HEK293T cells were transfected with the pCMV6-ENTRY control (Cat# [PS100001], Left lane) or pCMV6-ENTRY TRIM39 (Cat# RC205987, Right lane) cDNA for 48 hrs and lysed. Equivalent amounts of cell lysates (5 ug per lane) were separated by SDS-PAGE and immunoblotted with anti-TRIM39(Cat# [TA505761]). Positive lysates [LY406809] (100ug) and [LC406809] (20ug) can be purchased separately from OriGene.



Western blot validation of overexpression lysate (Cat# [LY406809]) using anti-DDK antibody (Cat# [TA50011-100]). Left: Cell lysates from untransfected HEK293T cells; Right: Cell lysates from HEK293T cells transfected with RC205987 using transfection reagent MegaTran 2.0 (Cat# [TT210002]).



Coomassie blue staining of purified TRIM39 protein (Cat# [TP305987]). The protein was produced from HEK293T cells transfected with TRIM39 cDNA clone (Cat# RC205987) using MegaTran 2.0 (Cat# [TT210002]).