

Product datasheet for RC205985

EIF4ENIF1 (NM_019843) Human Tagged ORF Clone

Product data:

Product Type:	Expression Plasmids
Product Name:	EIF4ENIF1 (NM_019843) Human Tagged ORF Clone
Tag:	Myc-DDK
Symbol:	EIF4ENIF1
Synonyms:	4E-T; Clast4
Mammalian Cell Selection:	Neomycin
Vector:	pCMV6-Entry (PS100001)
E. coli Selection:	Kanamycin (25 ug/mL)
ORF Nucleotide Sequence:	>RC205985 ORF sequence Red=Cloning site Blue=ORF Green=Tags(s)

TTTTGTAATACGACTCACTATAGGGCGGCCGGAATTCGTCGACTGGATCCGGTACCGAGGAGATCTGCC
GCC**CGATCGCC**

ATGGATAGGAGAAGTATGGGTGAAACAGAAAGTGGAGATGCTTTCCTTGACCTGAAGAAGCCTCCTGCCT
CCAAATGCCCCATCGCTATACAAAAGAAGAACTCTGGATATAAAAAGAACTCCCCATTCCAAACAGAG
GCCTTCATGCCTTCTGAAAAATATGACAGTGTGGTGTCTGGGACCCTGAGAAGTGGCATGCCTCTCTC
TACCCAGCTTCAGGGCGGAGCTCACCAGTGGAAAGTCTGAAGAAAGATGGATACAGACCGCCTTCCC
TGGTGCGCAGGATAGTAGATCCACGAGAGCGTGTGAAAGAAGATGACTTAGATGTTGTTCTCAGCCCTCA
GAGACGGAGCTTTGGAGGGGGCTGCCACGTGACAGCCGCTGTTAGCTCCCGGCGCTCAGGAAGTCCATTA
GAGAAAGATAGTATGGGCTTCGTCGCTTGGTGGACGTAGGATTGGCAGTGGGAGGATAATCTCTGCC
GGACCTTTGAGAAGGATCACCGTCTTAGCGATAAGGACCTGCGGGACTTGAGAGACAGAGACCGAGAGAG
GGACTTCAAGGACAAGCGTTTCAGGAGAGAGTTTGGAGATAGTAAGCGTGTCTTTGGTGAGCGTAGAAGA
AATGATTCTTACACAGAAGAAGAACCAGAGTGGTCTCTGCTGGACCCACAAGTCAGTCTGAAACCATCG
AACTGACTGGCTTTGATGATAAGATACTAGAAGAAGATCACAAGGGAGAAAAAGAACAAGGCGACGGAC
AGCCTCTGTGAAGGAAGGTATAGTAGAGTGCAATGGAGGAGTGGCCGAAGAGGATGAAGTGGAGGTCATC
CTTGACAGGAGCCTGCGGCTGATCAGGAAGTCCCAAGGGATGCTGTCTTGCTGAGCAGTCCCCAGGAG
ACTTTGACTTTAATGAGTCTTTAACCTTGATAAGGTGCCATGCTTGGCTTCGATGATAGAAGATGTTTT
GGGAGAAGGGTCACTCTGCCAGTCCGTTCACTAGGTGGTCTCTAACCAGCAGATCAGGAAGCCGA
TCCAGCAGTCTTGGGTCAACACCACATGAAGAGCTAGAGAGACTTGCAGGTCTGGAGCAAGCCATCTCT
CTCCTGGACAGAACTCGGGGAATTACTTTGCTCTATACCATTGGAAGACCATGCTGAAAAATAAGTGG
TATTTTAGAAATGCTACAGAAAGCCAAAGTGGATTTGAAACCTCTTCTTCCAGCCTTTCTGCAATAAA
GAAAAACTTAAAGAAAGCTCACATTGAGGGTTGTGCTTTCAGTGGAGGAGGTAGAAGCAGGTCTGAAGG
GCTTGAAGGTTGACCAGCAAGTGAAGAATCAACTCCCTCATGGCAGAACACCTAGAAGAGACCTTGAG
TGCCGTAACCAACATCGACAACGAAGAAAGACGGAGACATGACTGCGTTCAACAAGCTAGTGAGCACA



[View online »](#)

ATGAAGGCAAGTGGGACTTTGCCTTCTCAGCCAAAGTCAGCCGAAACCTTGAAAGCCATTTGATGTCCC
 CTGCTGAGATTCCAGGCCAGCCTGTCCCTAAGAACATCCTGCAGGAACCTCTGGGTCAACAGTTTCAGAG
 ACCTGCTTCTTCCAATCTTCTGAGTGGCCTTATGGGGAGCTTGGAGCCTACAACATCTTTACTGGCCAA
 AGAGCACCTCTCCTCCCTTGTACAGGTGTTTCAAACCTGAGCAGCCTCAGTGACTACCTTCGCCAA
 GAATACCATCACCAATTGGTTTACACACAGGACCACAGCAGCTACTCGGAGATCCATTCCAAGGCATGCG
 CAAACCCATGAGCCCCATCACAGCCAGATGAGCCAGCTGGAGTTGCAACAGGCAGCTTTAGAAGGGCTG
 GCCTTGCCACATGACCTTGTGTACAGGCAGCAAACCTTCTACCAGCCTGGTTTTGGCAAACACAGGTGG
 ACAGAACCAGAGATGGATTTCAGAAACAGGCAACAGCGAGTGACCAAGTCACCAGCACCCGTGCATCGAGG
 GAATTCCTCTTCCCCTGCCCTGTGCCTCCATACAAGCATGCTTTCTCCTTCTTTACCCCTACCTCA
 GTGATTCGTAAGATGTACGAGAGCAAAGAGAAAAGCAAGGAGGAGCCAGCATCTGAAAAGCAGCTCTTG
 GTGACAGTAAAGAGGATACTCAGAAGGCCAGTGAAGAAAACCTCCTGTATCCAGCTCTGTACCCAGTGC
 CGATCGAGACTTCTCCCCTACAAATTCAAACTGTCAGCATTACAGAGGTCTTCGTGTTCCACCCCA
 CTGTCCCAGGCCAACCGTTACACCAAAGAACAAGATTATCGACCTAAAGCAACTGGGAGAAAAACCCCA
 CCTTGGCATCCCAGTTCCTACAACACCTTTTCTCCGCCCTGTCCACCAAGTTCCTTGTCCCCATGT
 CCCTATGGTTAGCCTGTCCACCGCTTACCCAGGGTTGGTACAGAGGATGCTGGCCAGGGAGTACAT
 CCACAGCATCTTCCAAGTTTGTCCAAACTGGTGTGCTTCTCCTGGGATGGACTTGAGTCAATTAACAGG
 GAATATCTGGCCCCATCCTGGGTGAGCCCTTTTACCCTTACCTGCTGCTAGTACCCCTCTCTTAAACCC
 TCGTCTGGAACCTCTGCATCTGGCAATGGTGAACAGCAGCTACAGCGCTCAGTTCTGCATCCTCCA
 GGCTCTGGTTCCCATGCAGCAGCTGTCAGCGTTACAGAACCCCTCAGAACGTGCCAGCCGGTCAAGGC
 TGCCCCACATGCACTCCCAGCTGGAGCATCGCCCCAGCCAGAGGAGCAGCTCCCCGTGGGCCTTGCCAA
 ATGGTTTGGCTCAGATGTGCTACAGCAACCCCTGCCCTCCATGCCCGCAAAGTTATCAGTGTAGATGAA
 TTGGAATACCGACAG

ACGCGTACGCGGCGCTCGAGCAGAAACTCATCTCAGAAGAGGATCTGGCAGCAAATGATATCCTGGATT
 ACAAGGATGACGACGATAAGGTTTAA

Protein Sequence:

>RC205985 protein sequence
 Red=Cloning site Green=Tags(s)

MDRRSMGETESGDAFLDLKPPASKCPHRYTKEELLDIKELPHSKQRPSCLEKYDSDGVWDPEKWHASL
 YPASGRSSPVESLKKELDTDRPSLVRRIVDPRERVKEDDLDVVLSPQRRSFGGGCHVTAAVSSRRSGSPL
 EKDSDDLRLGGRRIGSGRIISARTFEKDHRLSDKDLRDLRDRERDFDKRFRREFGDSKRVFGERRR
 NDSYTEEEPEWFSAGPTSQSETIELTGFDDKILEEDHKGRKRTRRRRTASVKEGIVECNGGVAEEDEVEVI
 LAQEPAADQEVPRDAVLEQSPGDFDFNEFFNLKVPCLASMIEDVLGEGSVSASRFSRWFNPSRSRSGR
 SSSLGSTPHEELERLAGLEQAILSPGQNSGNYFAPIPLEDHAENKVDILEMLQKAKVDLKPILLSSLANK
 EKLKESHSVGVLSVEEVEAGLGLKVDQVKNSTPFMAEHLLETL SAVTNNRQLKKDGDMAFNKLVST
 MKASGTLPSQPKVSRNLESHLMSPAEIPGQVPKNILQELLGQPVQRPASNLLSGLMGSLEPTTSLGQ
 RAPSPPLSQVFQTRAASADYLRPRIPSPIGFTPGPQQLGDPFQGMKPMSPITAMQSQLELQQALEGL
 ALPHDLAVQAANFYQPGFGKPVDRTRDGRNRQQRVTKSPAPVHRGNSSPAPAASITSMSPSFTPTS
 VIRKMYESKEKSKEEPASGKAALGDSKEDTQKASEENLLSSSSVPSADRDSSPTTNSKLSALQRSSCSTP
 LSQANRYTKEQDYRPKATGRKPTLASPVPTTFLRPVHVQVPLPHVPMVPAHRLHPGLVQRMLAQGVH
 PQHLPSLLQTGVLPPGMDLSHLQGISGPILGQPFYPLPAASHPLLNPRPGTPLHLAMVQQQLQRSVLHPP
 GSGSHAAAVSVQTTQNVPSRSGPLPHMHSQLEHRPSQRSSSPVGLAKWFGSDVLLQPLPSMPAKVISVDE
 LEYRQ

TRTRPLEQKLISEEDLAANDILDYKDDDDKV

Chromatograms:

https://cdn.origene.com/chromatograms/mk6236_g06.zip

Restriction Sites:

Sgfl-Mlul

Cloning Scheme:


ACCN: NM_019843

ORF Size: 2955 bp

OTI Disclaimer: The molecular sequence of this clone aligns with the gene accession number as a point of reference only. However, individual transcript sequences of the same gene can differ through naturally occurring variations (e.g. polymorphisms), each with its own valid existence. This clone is substantially in agreement with the reference, but a complete review of all prevailing variants is recommended prior to use. [More info](#)

OTI Annotation: This clone was engineered to express the complete ORF with an expression tag. Expression varies depending on the nature of the gene.

Components: The ORF clone is ion-exchange column purified and shipped in a 2D barcoded Matrix tube containing 10ug of transfection-ready, dried plasmid DNA (reconstitute with 100 ul of water).

Reconstitution Method:

1. Centrifuge at 5,000xg for 5min.
2. Carefully open the tube and add 100ul of sterile water to dissolve the DNA.
3. Close the tube and incubate for 10 minutes at room temperature.
4. Briefly vortex the tube and then do a quick spin (less than 5000xg) to concentrate the liquid at the bottom.
5. Store the suspended plasmid at -20°C. The DNA is stable for at least one year from date of shipping when stored at -20°C.

RefSeq: [NM_019843.4](#)

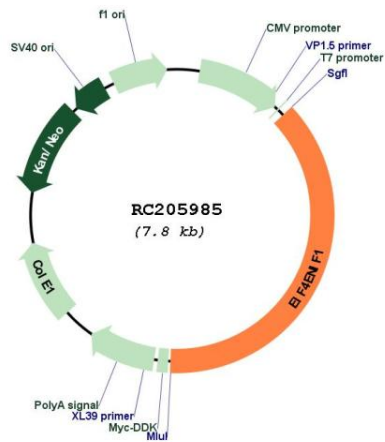
RefSeq Size: 3704 bp

RefSeq ORF: 2958 bp

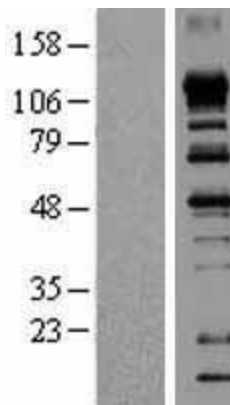
Locus ID: 56478
UniProt ID: [Q9NRA8](#)
Cytogenetics: 22q12.2
MW: 108.2 kDa

Gene Summary: The protein encoded by this gene is a nucleocytoplasmic shuttle protein for the translation initiation factor eIF4E. This shuttle protein interacts with the importin alpha-beta complex to mediate nuclear import of eIF4E. It is predominantly cytoplasmic; its own nuclear import is regulated by a nuclear localization signal and nuclear export signals. Multiple transcript variants encoding different isoforms have been found for this gene. [provided by RefSeq, Aug 2009]

Product images:



Circular map for RC205985



Western blot validation of overexpression lysate (Cat# [LY432079]) using anti-DDK antibody (Cat# [TA50011-100]). Left: Cell lysates from untransfected HEK293T cells; Right: Cell lysates from HEK293T cells transfected with [RC229052] using transfection reagent MegaTran 2.0 (Cat# [TT210002]).